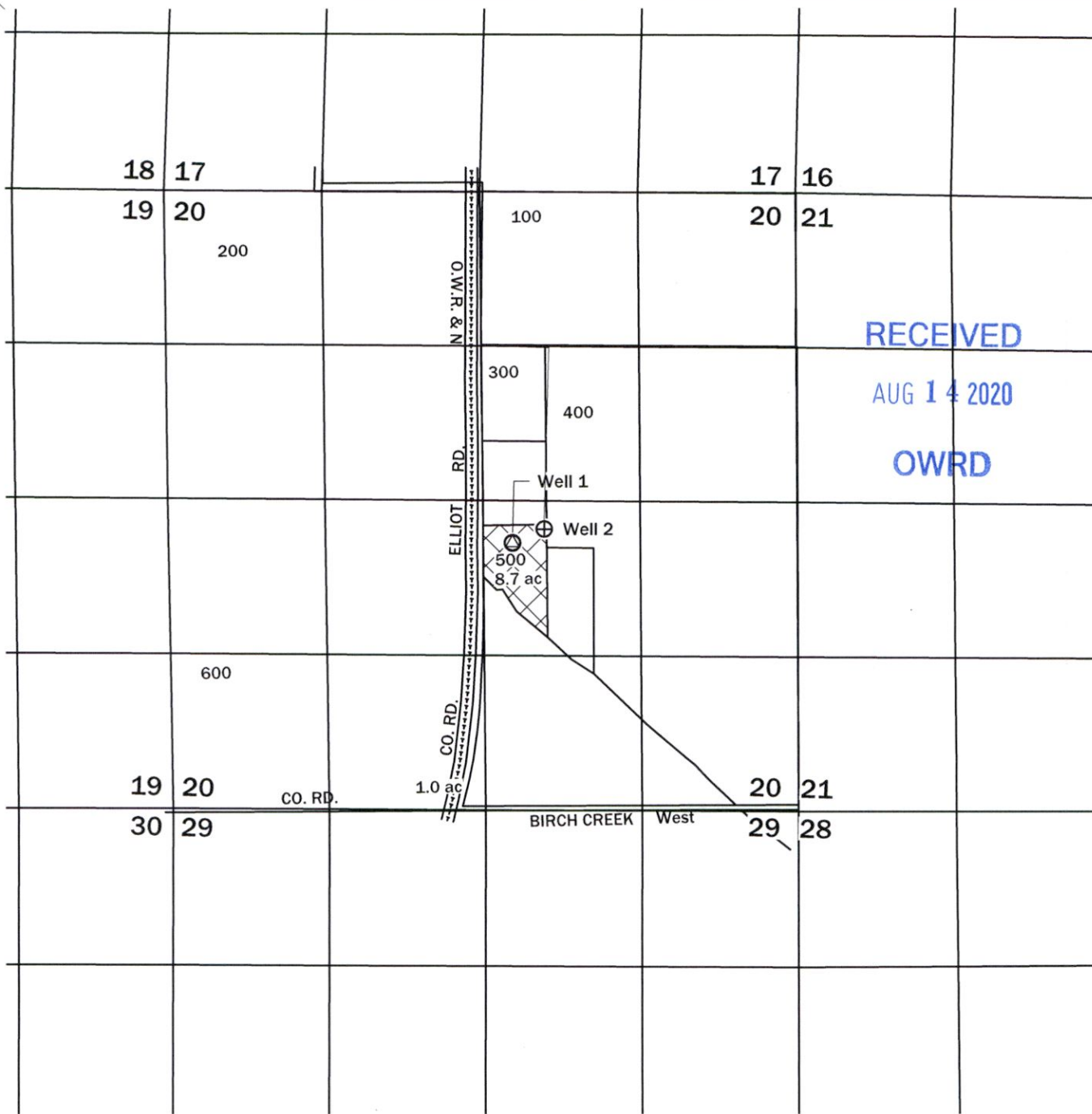


**Historical Point of Appropriation  
Transfer Application Map for  
Certificate 43794**

T6N, R36E, W.M.  
Umatilla County, Oregon






RECEIVED  
AUG 14 2020  
OWRD

\\geoengineers.com\WAM\Projects\24\24623001\CAD\00\Water Rights Map\2462300100\_Chamberlain [43794].dwg TAB:Base Date Exported: 07/23/20 - 10:15 by mwoods

**Disclaimer**  
This map was prepared for the purpose of identifying the location of a water right only and it is not intended to provide legal dimensions or location of property ownership lines.

**Map Notes**  
Date: 06/03/20  
Data Sources: ESRI  
Prepared By: GeoEngineers

**Well Locations**  
Well 1: 1673' S + 311' E from NW corner of the SW ¼ NE ¼ of section 20  
Well 2: 1545' S + 655' E from NW corner of the SW ¼ NE ¼ of section 20

- Legend**
-  C-43794
  - Well 1  Old POA - UMAT 5181
  - Well 2  Historical POA - UMAT 5180

