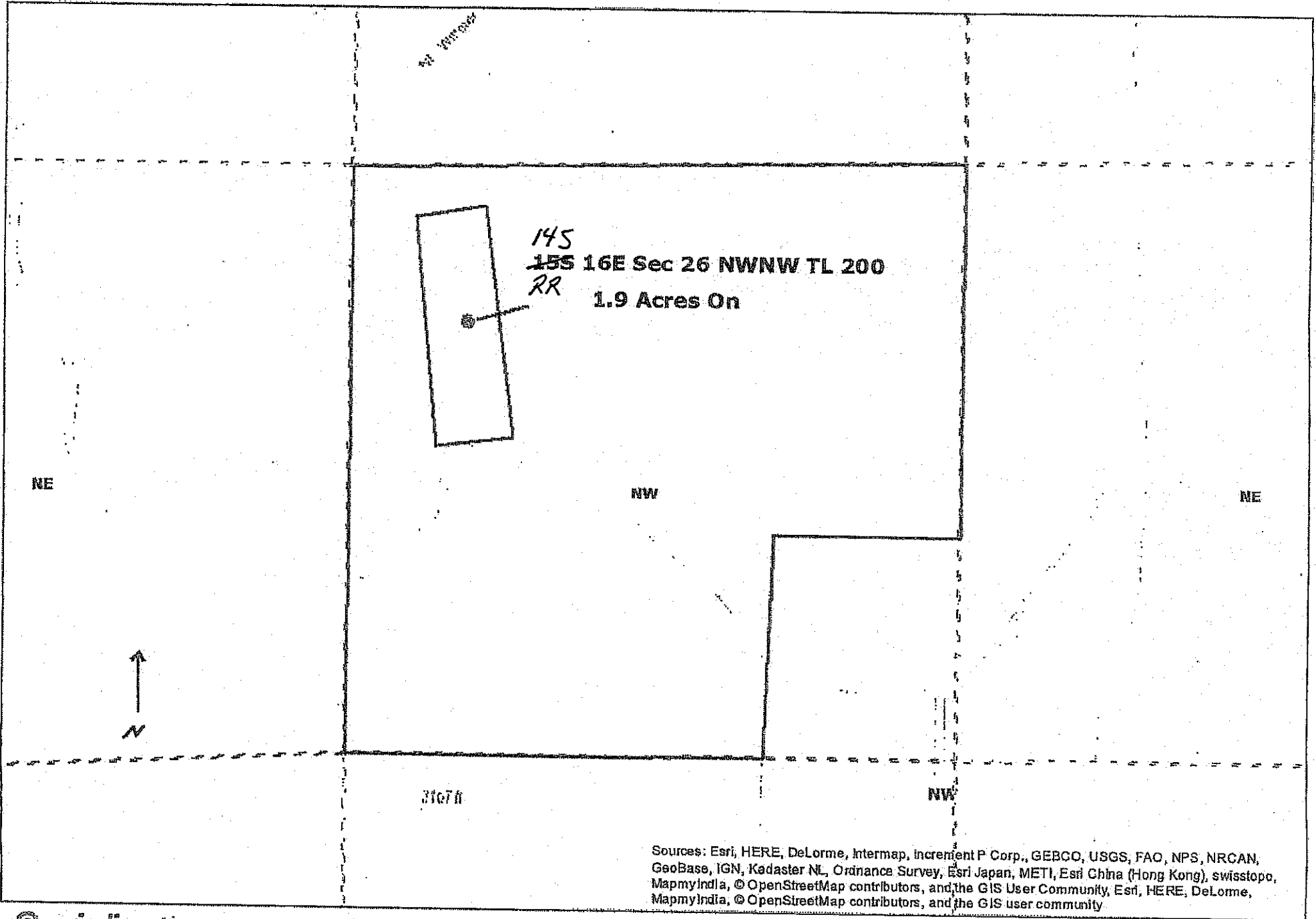


FINAL PROOF MAP  
T-12813

Petersen 1.9 Acres On - CERTIFICATE 82246 (IR)

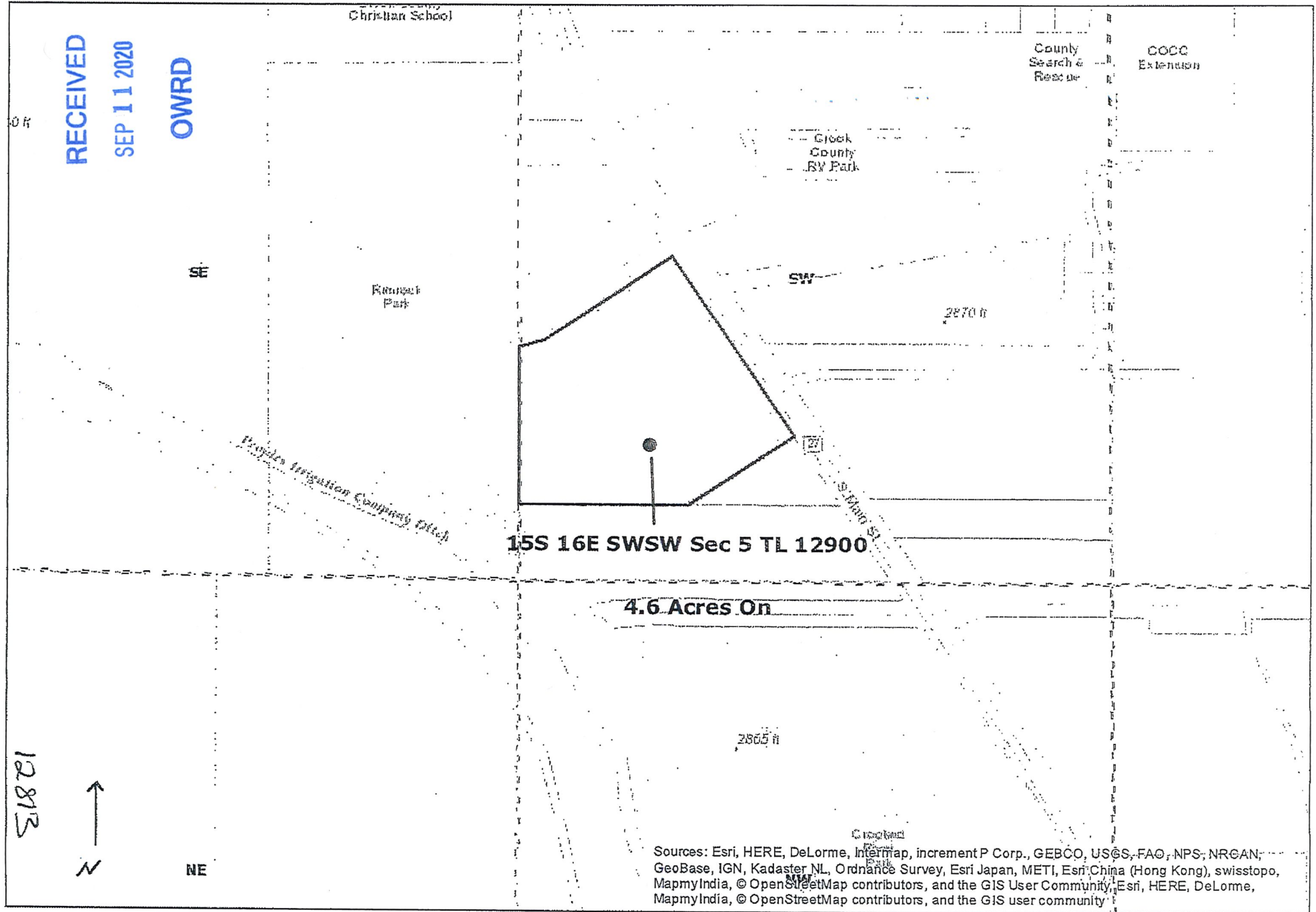


Sources: Esri, HERE, DeLorme, Intermap, increment P Corp., GEBCO, USGS, FAO, NPS, NRCAN, GeoBase, IGN, Kadaster NL, Ordnance Survey, Esri Japan, METI, Esri China (Hong Kong), swisstopo, MapmyIndia, © OpenStreetMap contributors, and the GIS User Community, Esri, HERE, DeLorme, MapmyIndia, © OpenStreetMap contributors, and the GIS user community.

FINAL PROOF MAP

T. 12813

Crook County 4.6 Acres On - CERTIFICATE 82247 (IR)



Sources: Esri, HERE, DeLorme, Intermap, increment P Corp., GEBCO, USGS, FAO, NPS, NRCAN, GeoBase, IGN, Kadaster NL, Ordnance Survey, Esri Japan, METI, Esri China (Hong Kong), swisstopo, MapmyIndia, © OpenStreetMap contributors, and the GIS User Community, Esri, HERE, DeLorme, MapmyIndia, © OpenStreetMap contributors, and the GIS user community

Crook County

T 14s R 16E Sec. 16 Tax Lot 814

SW & NW Of The NE

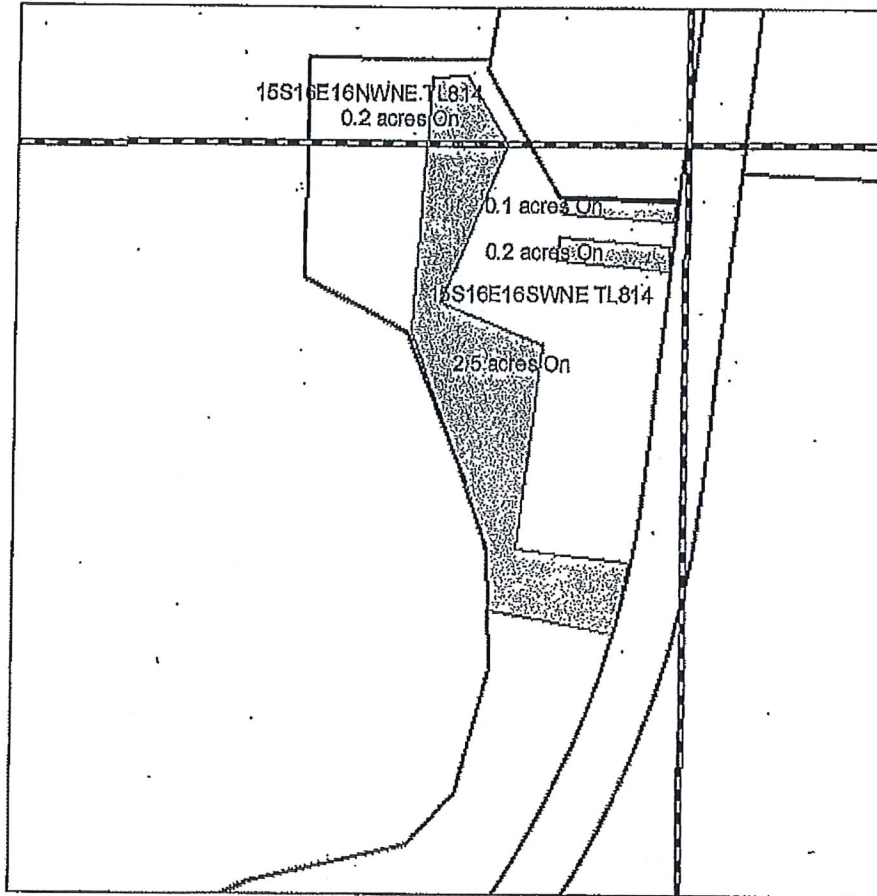
RECEIVED

SEP 11 2020

OWRD



ON Map



1 in = 400 ft

Certificate 82247 (IR)

- Transfer
- Cert 82246 IR
- Cert 82246 IR / 82247 IS
- Tax Lot
- Cert 82247 IR
- Cert 82249 IS

12813



FINAL PROOF MAP T-12813

Jared Wilkinson

Acres: 3.0

Crook County

T 13S R 15E Sec. 33 Tax Lot 109

SE & NE Of The NW & SW

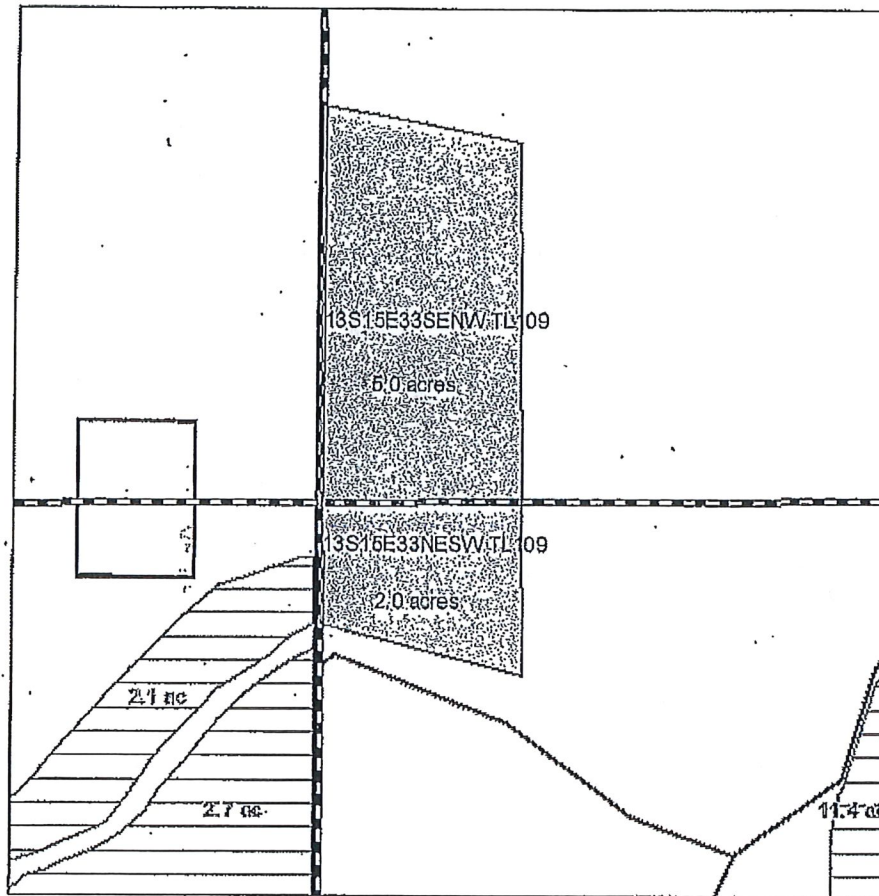
RECEIVED

SEP 11 2020

OWRD



ON Map



1 in = 400 ft

Certificate 82247 (IR)

- Transfer
- Cert 82246 IR
- Cert 82246 IR / 82247 IS
- Tax Lot
- Cert 82247 IR
- Cert 82249 IS



FINAL PROOF MAP FOR T-12813

John Dehler

Acres: 7.0

12813

Crook County

RECEIVED

T 14S R 15E Sec. 6 Tax Lot 200

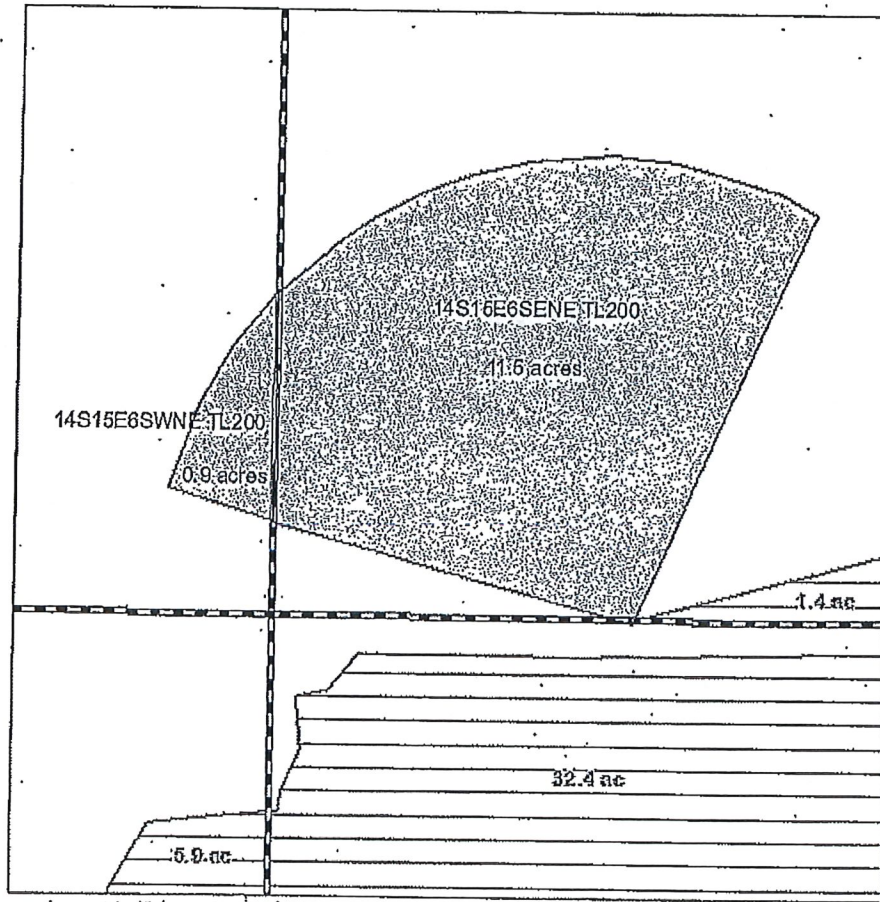
SEP 11 2020

SW & SE Of The NE

OWRD







ON Map





1 in = 400 ft

Certificate 82247 (IR)

 Transfer  
 Tax Lot

 Cert 82246 IR  
 Cert 82247 IR

 Cert 82246 IR / 82247 IS  
 Cert 82249 IS



FINAL PROOF MAP T-12813

William Guthrie

Acres: 12.4

12813