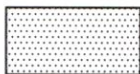
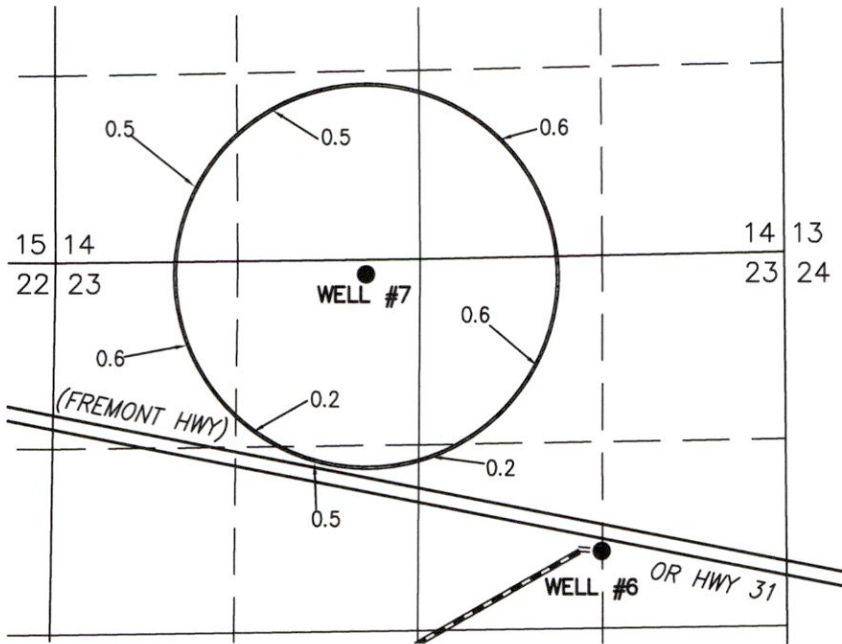


MAP TO ACCOMPANY APPLICATION  
TO CHANGE PLACE OF USE  
AND POINT OF APPROPRIATION  
FOR  
JRS PROPERTIES III

"TO" TAX LOT 200 IN  
SECTIONS 14 & 23, TOWNSHIP 34 SOUTH, RANGE 19 EAST, W.M.  
LAKE COUNTY, OREGON



3.7 ACRES PRIMARY RIGHTS FROM WELL 7 OF  
CERTIFICATE #93777 (G-15510) POU & POA  
TRANSFERRED OUT, AS SHOWN.

- WELL #7 (LAKE 52463 PROPOSED) IN THE NE  
1/4 NW 1/4 SECTION 23, T34S R19E, W.M.  
LOCATED 105 FEET SOUTH AND 3000 FEET  
WEST FROM THE NE CORNER OF SECTION 23.

THIS MAP IS FOR THE PURPOSE OF LOCATING A WATER  
RIGHT ONLY AND HAS NO INTENT TO PROVIDE LEGAL  
DIMENSIONS OR THE LOCATION OF PROPERTY LINES.

RECEIVED  
SEP 08 2020  
OWRD

ALL POINTS ENGINEERING  
& SURVEYING, INC.

P.O. BOX 767  
TERREBONNE, OREGON 97760  
(541) 548-5833 PH  
Scott@APEandS.com  
www.APEandS.com



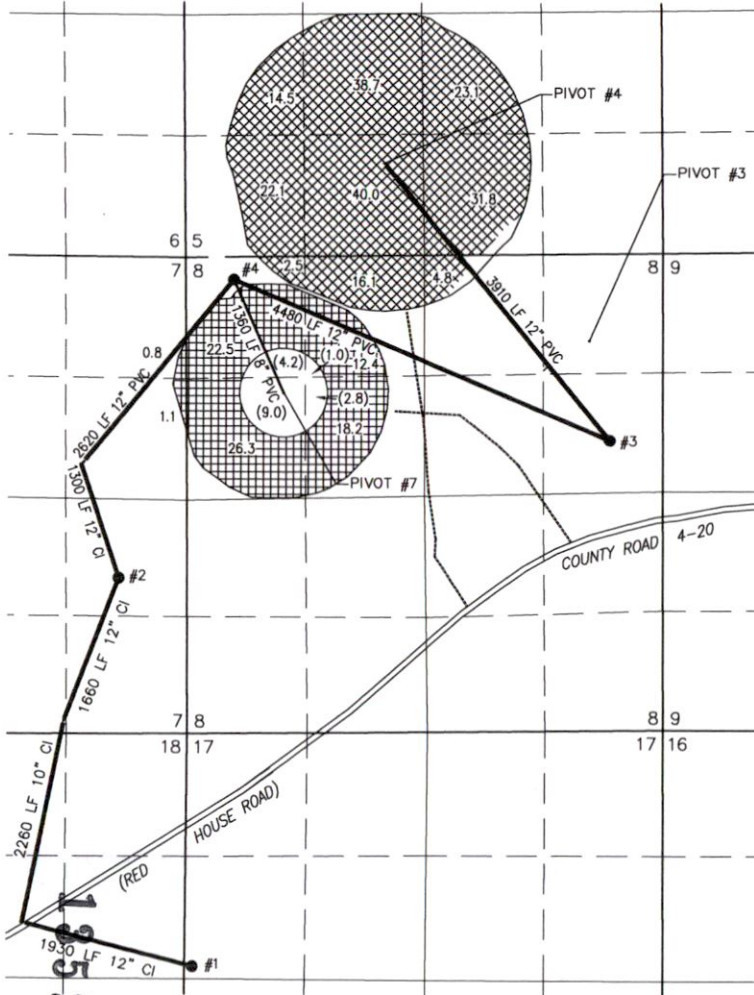
PROJECT No. 15-128

PREPARED AT THE REQUEST OF:

JRS PROPERTIES III  
P.O. BOX 27  
BOISE, ID 83707

**TRANSFER MAP TO ACCOMPANY APPLICATION  
TO CHANGE PLACE OF USE & POINTS OF  
APPROPRIATION FOR  
JRS PROPERTIES III, LLP**

"FROM" TAX LOT 500  
IN SECTIONS 7, 8, 17, AND 18, TOWNSHIP 33 SOUTH, RANGE 19 EAST, W.M.  
LAKE COUNTY, OREGON

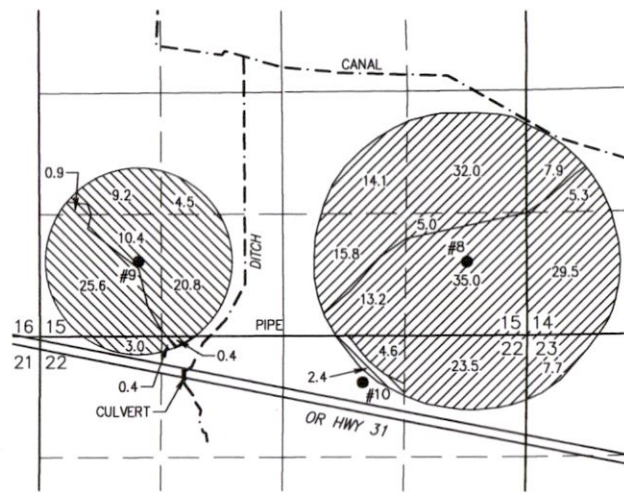


- WELL#1 (LAKE 4564-G15037) IN THE SW 1/4 NW 1/4 SECTION 17, T33S R19E, W.M. LOCATED 2860 FEET SOUTH AND 50 FEET EAST FROM THE NW CORNER OF SECTION 17.
- WELL#2 (LAKE 51182-G15037) IN THE NE 1/4 SE 1/4 SECTION 7, T33S R19E, W.M. LOCATED 1690 FEET SOUTH AND 770 FEET WEST FROM THE SE CORNER OF SECTION 7.
- WELL#3 (LAKE 50941-BOTH) IN THE SE 1/4 NE 1/4 SECTION 8, T33S R19E, W.M. LOCATED 2048 FEET SOUTH AND 563 FEET WEST FROM THE NE CORNER OF SECTION 8.
- WELL#4 (LAKE 51031-BOTH) IN THE NW 1/4 NW 1/4 SECTION 8, T33S R19E, W.M. LOCATED 325 FEET SOUTH AND 4704 FEET WEST FROM THE NE CORNER OF SECTION 8.

- 193.6 ACRES PRIMARY RIGHTS FROM CERTIFICATE #B3778 (G-13714) POJ & POA TRANSFERRED OUT, AS SHOWN.
- 81.3 ACRES PRIMARY RIGHTS FROM CERTIFICATE #B3777 (G-15510) POJ & POA TRANSFERRED OUT, AS SHOWN.

THIS MAP IS FOR THE PURPOSE OF LOCATING A WATER RIGHT ONLY AND HAS NO INTENT TO PROVIDE LEGAL DIMENSIONS OR THE LOCATION OF PROPERTY LINES.

"TO" TAX LOT 200  
IN SECTIONS 14, 15, 22, & 23, TOWNSHIP 34 SOUTH, RANGE 19 EAST, W.M.  
LAKE COUNTY, OREGON



- WELL#8 (LAKE 52491) IN THE SE 1/4 SE 1/4 SECTION 15, T34S R19E, W.M. LOCATED 800 FEET NORTH AND 650 FEET WEST FROM THE SE CORNER OF SECTION 15.
- WELL#9 (LAKE 52492) IN THE SW 1/4 SW 1/4 SECTION 15, T34S R19E, W.M. LOCATED 825 FEET NORTH AND 1080 FEET EAST FROM THE SW CORNER OF SECTION 15.
- WELL#10 (LAKE 52770) IN THE NW 1/4 NE 1/4 SECTION 22, T34S R19E, W.M. LOCATED 510 FEET SOUTH AND 3530 FEET EAST FROM THE NW CORNER OF SECTION 22.

- 118.8 ACRES PRIMARY RIGHTS FROM CERTIFICATE #B3778 (G-13714) POJ & POA TRANSFERRED TO PROPOSED PRIMARY, AS SHOWN.
- 74.8 ACRES PRIMARY GROUND WATER RIGHTS FROM CERTIFICATE #B3778 (G-13714) TRANSFERRED TO SUPPLEMENTAL AS SHOWN.
- 32.3 ACRES PRIMARY RIGHTS FROM CERTIFICATE #B3777 (G-15510) TRANSFERRED POJ & POA TO PROPOSED PRIMARY, AS SHOWN.
- 45.3 ACRES PRIMARY GROUND WATER RIGHTS FROM CERTIFICATE #B3777 (G-15510) TRANSFERRED TO SUPPLEMENTAL, AS SHOWN.

**ALL POINTS ENGINEERING  
& SURVEYING, INC.**



P.O. BOX 767  
TERREBONNE, OREGON 97760  
(541) 548-5833 PH  
Scott@APEandS.com  
www.APEandS.com

PROJECT No. 15-128

PREPARED AT THE REQUEST OF:  
**J.R.S. PROPERTIES III, LLP**  
P.O. BOX 27  
BOISE, ID 83707

RECEIVED

SEP 08 2020

OWRD

THIS MAP WAS PREPARED FOR  
ASSESSMENT PURPOSE ONLY

0 1,000 2,000 4,000 Feet

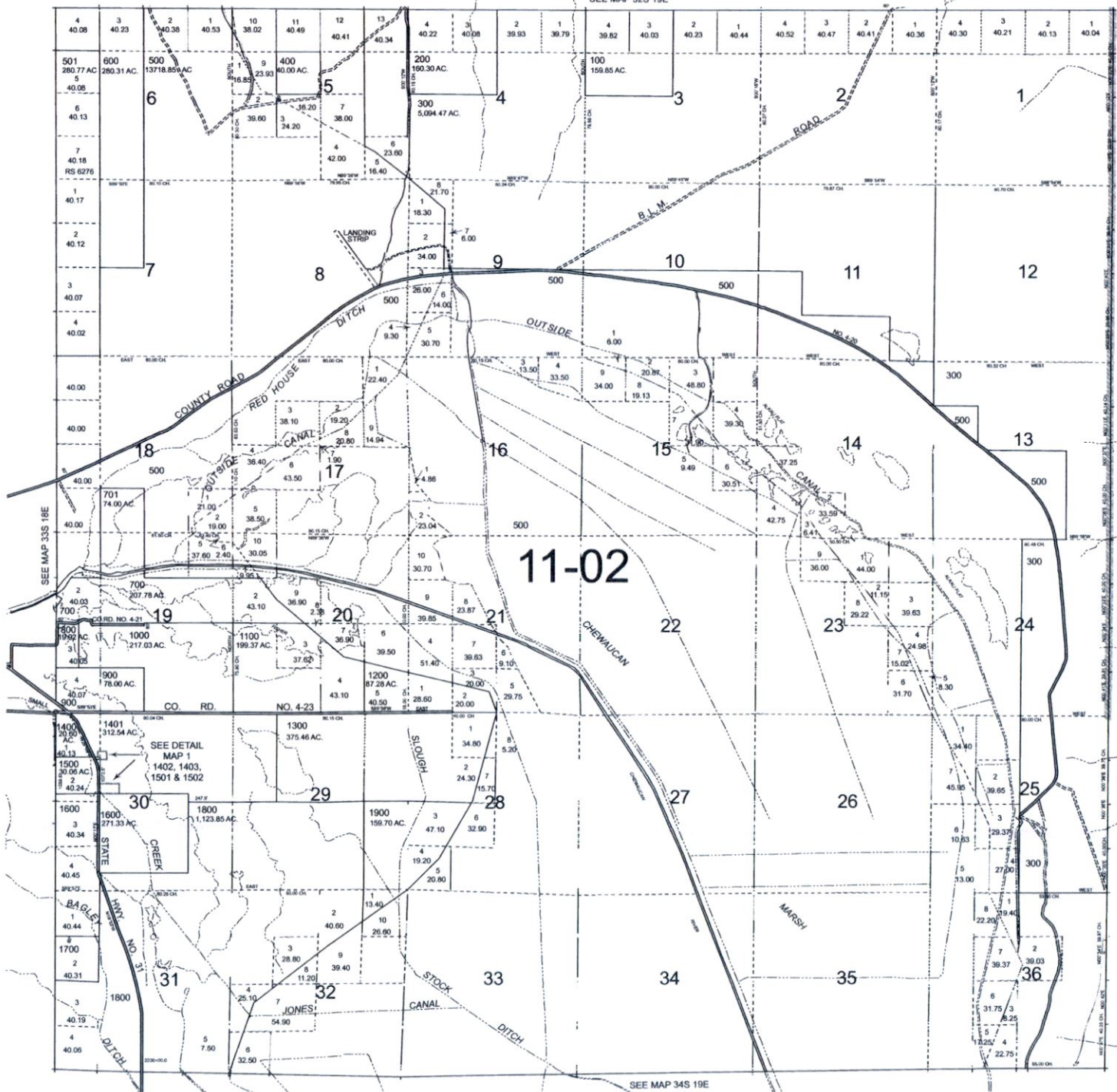
T.33S. R.19E. W.M.  
LAKE COUNTY

1" = 2000'

SEE MAP 32S 19E

33S19E  
& INDEX

CANCELLED:



SEE DETAIL  
MAP 1  
1402, 1403,  
1501 & 1502

STATE

BAGLEY

JONES

DITCH

SEE MAP 33S 18E

SEE MAP 34S 19E

SEE MAP 33S 20E

Revised: MA  
4/13/2011

33S19E  
& INDEX

13524

OWRD

SEP 08 2020

RECEIVED