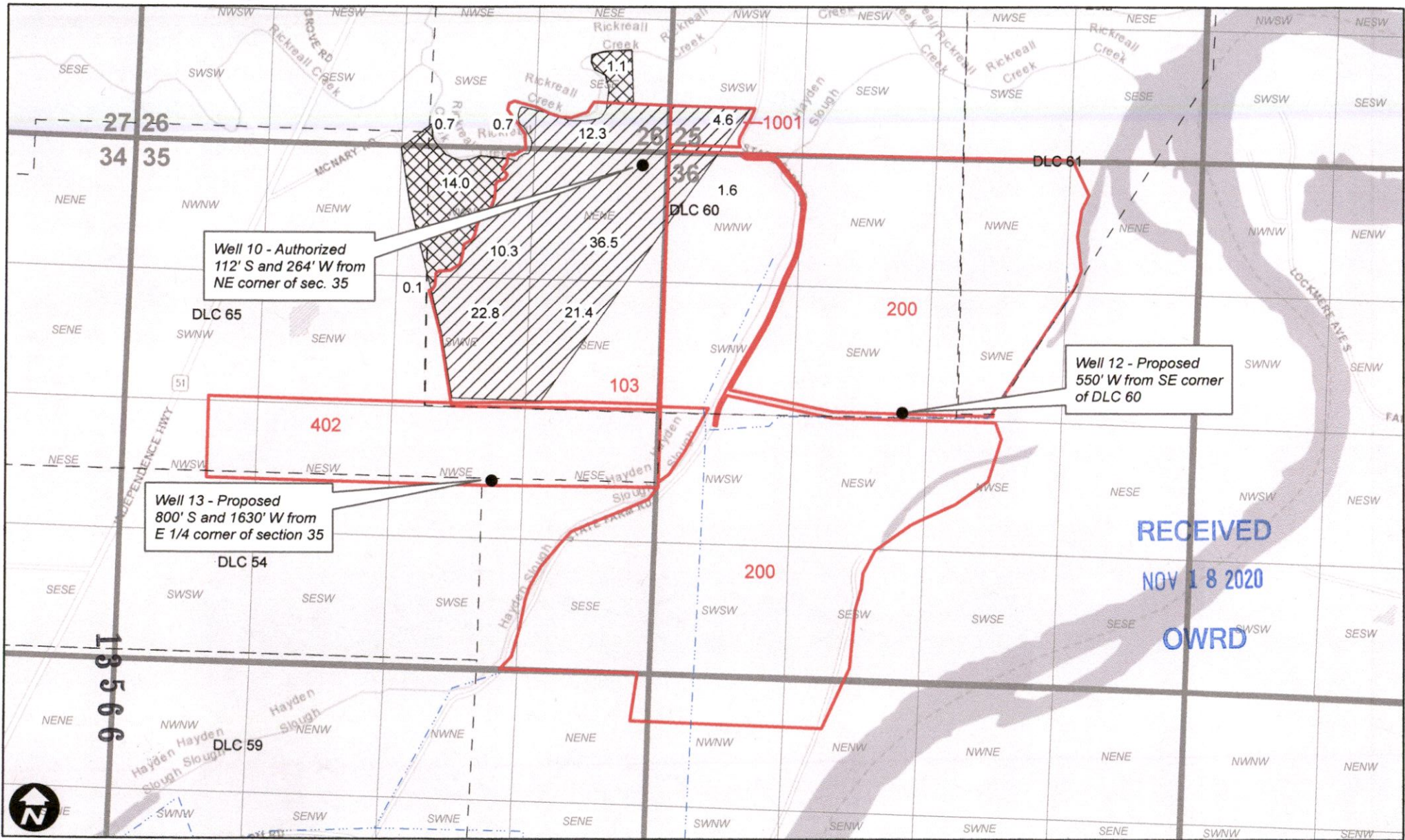


ACMPC Oregon 2, LLC
 Halls Ferry Farms
 Groundwater Registration Modification - GR 685

Township 7S, Range 4W



Well 10 - Authorized
 112' S and 264' W from
 NE corner of sec. 35

Well 12 - Proposed
 550' W from SE corner
 of DLC 60

Well 13 - Proposed
 800' S and 1630' W from
 E 1/4 corner of section 35

RECEIVED
 NOV 18 2020
 OWRD

Legend

- GR 685 APOA
- GR 685 No Change
- Irrigation Mainline
- Tax Lot
- DLC