

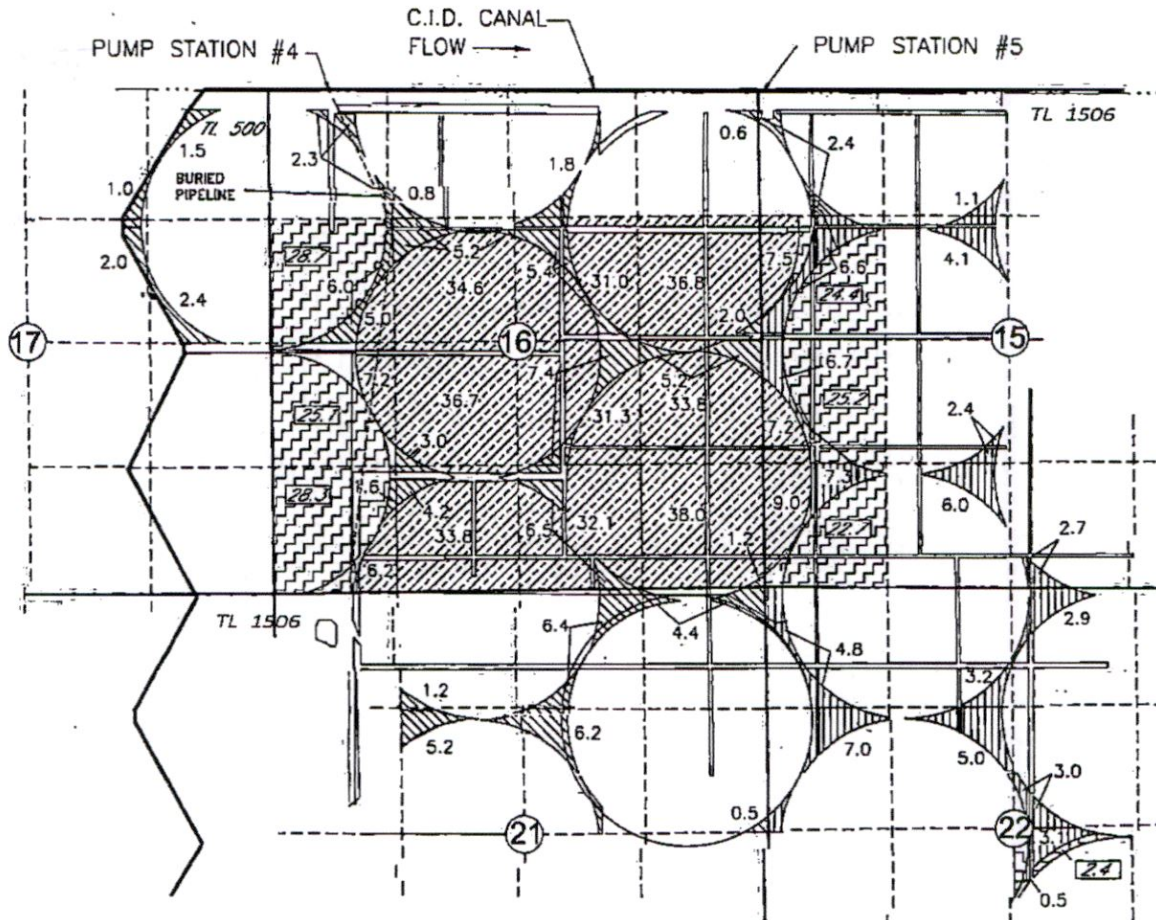
TRANSFER APPLICATION MAP  
 EASTERDAY FARMS DAIRY, LLC & CANYON FARM II, LLC  
 TO  
 SAGE HOLLOW RANCH, LLC  
 PORTIONS OF CERTIFICATES 94871, 94873, 94874  
 T3N, R26E, W.M., MORROW COUNTY

RECEIVED

FEB 18 2021

OWRD

SHEET 1 OF 2 " FROM MAP "



**LEGEND**

- 86.4 AC OF CERT 94873
- 66.4 AC OF CERT 94874
- 350.2 AC OF CERT 94871
- AC OF CERT 94871 In QTR NOT ASSOCIATED WITH THIS TRANSFER
- AC OF CERT 94874 In QTR NOT ASSOCIATED WITH THIS TRANSFER



13627

Received by OWRD

MAR 05 2020

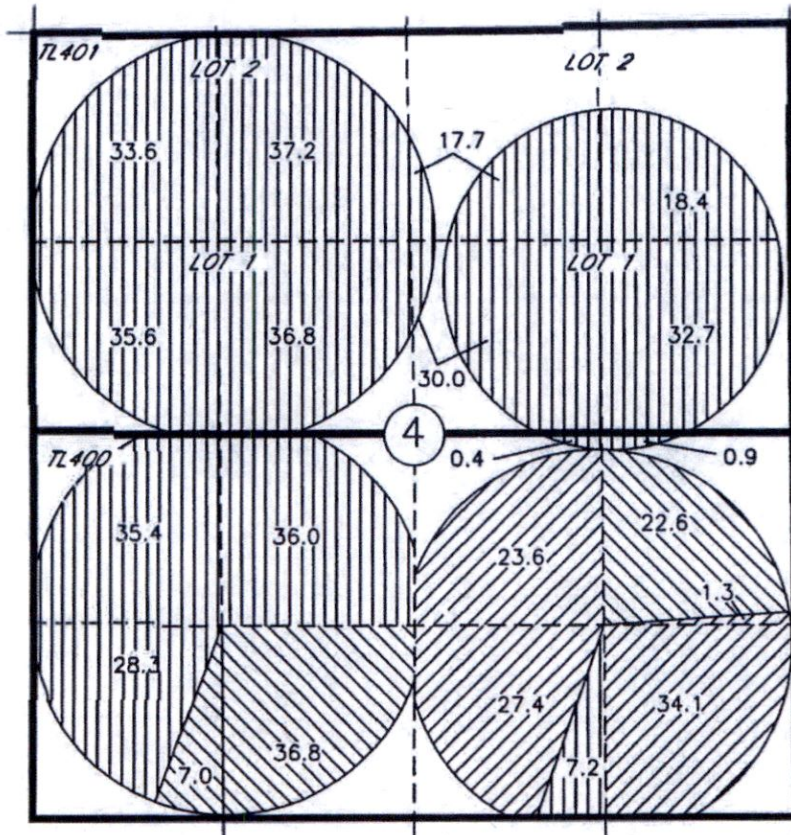
Salem, OR

NOTE:  
 THE PURPOSE OF THIS MAP IS TO IDENTIFY THE APPROXIMATE LOCATION OF THE WATER RIGHT. IT IS NOT INTENDED TO PROVIDE INFORMATION RELATIVE TO THE LOCATION OF PROPERTY OWNERSHIP BOUNDARY LINES, PIPE LOCATIONS AND SIZES WHERE SHOWN WERE PROVIDED BY FARM OPERATIONAL PERSONNEL, AND ARE APPROXIMATE LOCATIONS AND SIZES.

~~12008~~

**TRANSFER APPLICATION MAP**  
**EASTERDAY FARMS DAIRY, LLC & CANYON FARM II, LLC**  
**TO**  
**SAGE HOLLOW RANCH, LLC**  
**PORTIONS OF CERTIFICATES 94871, 94873, 94874**  
**T3N, R26E, W.M., MORROW COUNTY**  
**SHEET 2 OF 2 TO MAP "**

**RECEIVED**  
**FEB 18 2021**  
**OWRD**



**LEGEND**

- 350.2 AC CERT 94871
- 86.4 AC CERT 94873
- 66.4 AC CERT 94874



P.O.D. COLUMBIA RIVER  
 LOCATED IN LOT 7, NE1/4 NW1/4,  
 SEC 2, T4N, R25E, W.M.; 150 FT  
 SOUTH AND 2990 FT WEST FROM  
 THE NE COR OF SEC 2.

Received by OWRD

MAR 05 2020

Salem, OR

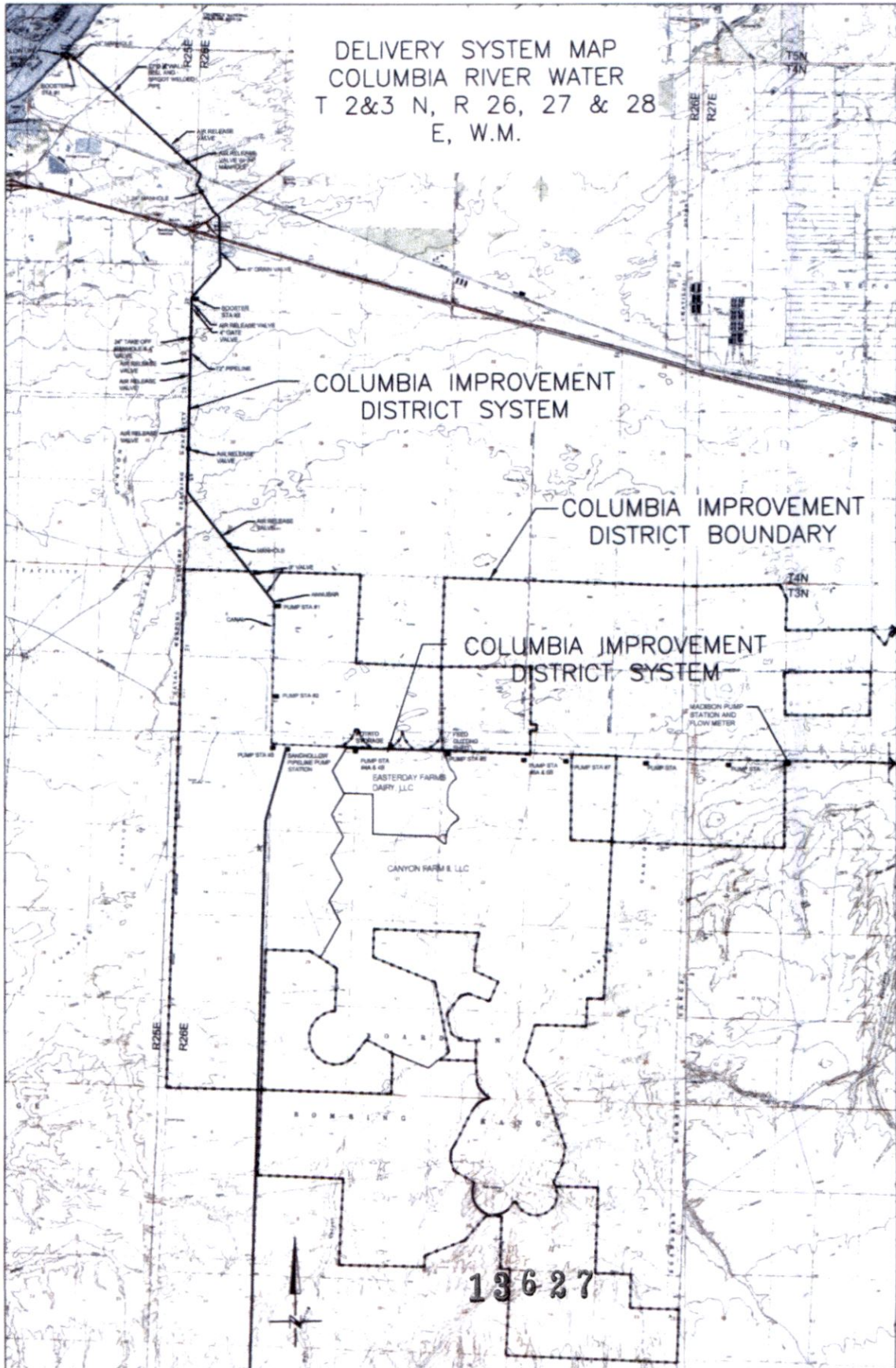
NOTE:  
 THE PURPOSE OF THIS MAP IS TO IDENTIFY THE APPROXIMATE LOCATION OF THE WATER RIGHT. IT IS NOT INTENDED  
 TO PROVIDE INFORMATION RELATIVE TO THE LOCATION OF PROPERTY OWNERSHIP BOUNDARY LINES. PIPE LOCATIONS  
 AND SIZES WHERE SHOWN WERE PROVIDED BY FARM OPERATIONAL PERSONNEL AND ARE APPROXIMATE LOCATIONS AND  
 SIZES.

RECEIVED

FEB 18 2021

OWRD

DELIVERY SYSTEM MAP  
COLUMBIA RIVER WATER  
T 2&3 N, R 26, 27 & 28  
E, W.M.



RECEIVED  
MAR 05 2020  
OWRD