

TRANSFER APPLICATION MAP
Certificate 67279
Sections 7 & 18, T17S, R3W
Sections 12 & 13, T17S, R4W, W.M., Lane County
Knife River Corporation

RECEIVED
 MAY 06 2021
 OWRD

TO MAP

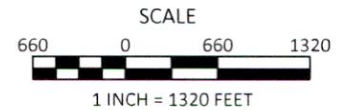


EXPLANATION

TO LANDS

CERTIFICATE 67279
 INDUSTRIAL / COMMERCIAL USE
 PRIORITY: 9/24/1987

POINT OF DIVERSION (POD)



This map is not intended to provide legal dimensions or locations of property ownership lines

April 30, 2021

Figure 2

kpff

111 SW Fifth Ave., Suite 2600
 Portland, OR 97204
 O: 503.542.3860
 F: 503.224.4681
www.kpff.com

13701 -

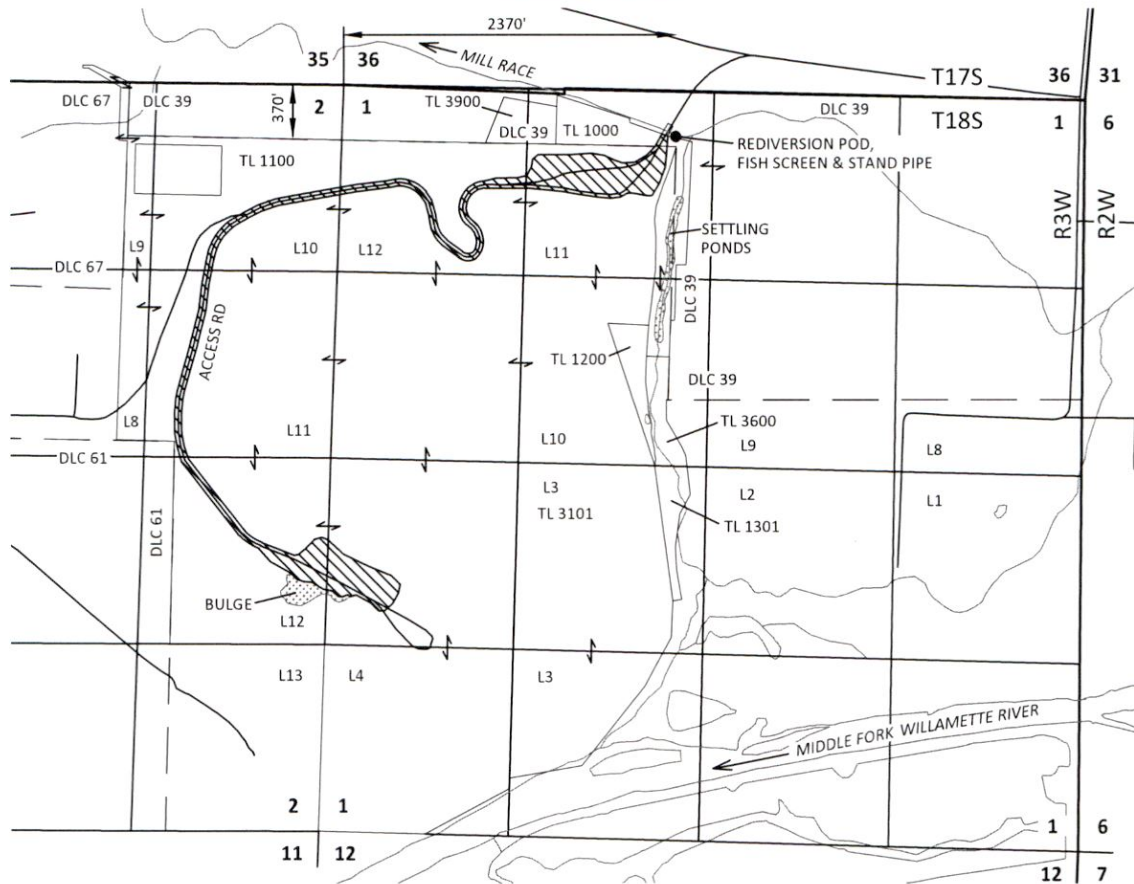
TRANSFER APPLICATION MAP
Certificate 67279
Sections 1 & 2, T18S, R3W
Section 8, T18S, R2W, W.M., Lane County
Knife River Corporation

RECEIVED

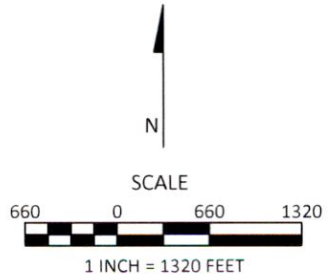
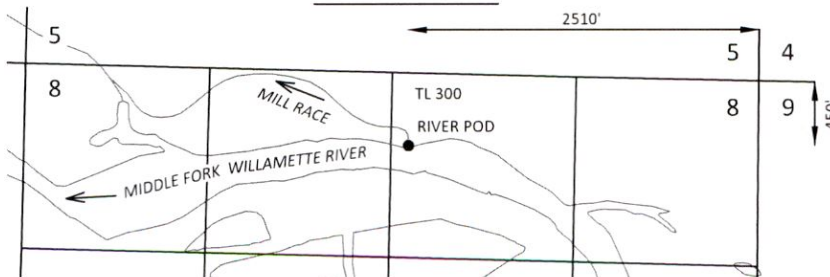
MAY 06 2021

OWRD

FROM MAP



FROM POD



EXPLANATION

FROM LANDS



CERTIFICATE 91508
 INDUSTRIAL / MINING
 PRIORITY: 10/16/1963



POINT OF DIVERSION (POD)

This map is not intended to provide legal dimensions or locations of property ownership lines

April 30, 2021

Figure 1



111 SW Fifth Ave., Suite 2600
 Portland, OR 97204
 O: 503.542.3860
 F: 503.224.4681
www.kpff.com

13701-