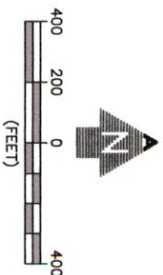


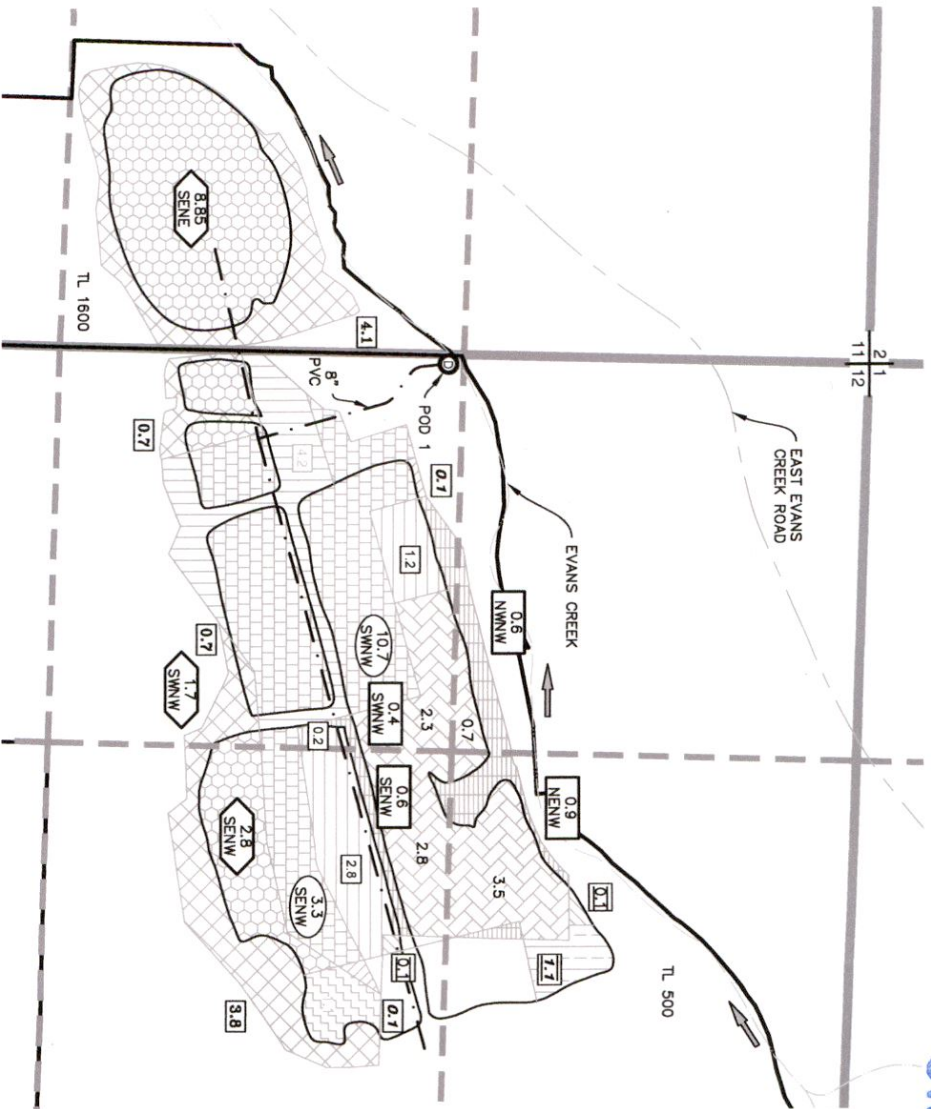
RECEIVED

JUN 10 2021

OWRD



13732



LEGEND

	SECTION LINE		FLOW DIRECTION
	1/4 1/4 LINE		SECTION CORNER
	TAX LOT LINE		TAX LOT NUMBER
	CANAL/CREEK		POD
	BURIED PIPE		
	ROAD		
	CERTIFICATE 80406 "FROM" LANDS CERTIFICATE 80407 "TO" LANDS		CERTIFICATE 80406 "FROM" LANDS CERTIFICATE 80406 "TO" LANDS
	CERTIFICATE 80407 "FROM" LANDS CERTIFICATE 80406 "TO" LANDS		CERTIFICATE 80420 "FROM" LANDS CERTIFICATE 80406 "TO" LANDS
	CERTIFICATE 75420 "FROM" LANDS CERTIFICATE 80407 "TO" LANDS		CERTIFICATE 75420 "FROM" LANDS CERTIFICATE 80406 "TO" LANDS
	CERTIFICATE 80407 "FROM" LANDS CERTIFICATE 75420 "TO" LANDS		CERTIFICATE 80407 "FROM" LANDS CERTIFICATE 80406 "TO" LANDS
	CERTIFICATE 80407 "FROM" LANDS CERTIFICATE 75420 "TO" LANDS		CERTIFICATE 80407 "FROM" LANDS CERTIFICATE 80406 "TO" LANDS

NOTES:

1. THIS MAP WAS PREPARED FROM FIELD MEASUREMENTS, NAD 2011 AERIAL PHOTOGRAPH, AND JACKSON COUNTY TAX MAPS 35-4-11 & 35-4-12.
2. THE PURPOSE OF THIS MAP IS TO IDENTIFY THE LOCATION OF THE WATER RIGHT ONLY, AND IS NOT INTENDED TO PROVIDE DIMENSIONS OR LOCATION OF PROPERTY LINES.
3. DATE OF PRIORITY FOR THESE WATER RIGHTS ARE AS FOLLOWS:  
 CERTIFICATE 75420 - 12/31/1881  
 CERTIFICATE 80406 - 12/31/1881  
 CERTIFICATE 80407 - 6/5/1950

POD LOCATION:

POD 1: 1185' NORTH & 30' EAST FROM THE WEST 1/4 CORNER OF SECTION 12.

TRANSFER APPLICATION MAP

FOR MEDICAL PROPERTIES LLC  
 T33S, R4W, SECS. 11 & 12, NM  
 JACKSON COUNTY, OREGON  
 CERTIFICATES 75420, 80406, & 80407

**A.E. ADKINS**  
 ENGINEERING & SURVEYING  
 P / 541.884.4666  
 W / AdkinsEngineering.com  
 1435 ESPLANADE AVENUE, KLAMATH FALLS, OR 97601

SERVING S. OREGON & N. CALIFORNIA  
 ENGINEERING • SURVEYING • PLANNING • TESTING