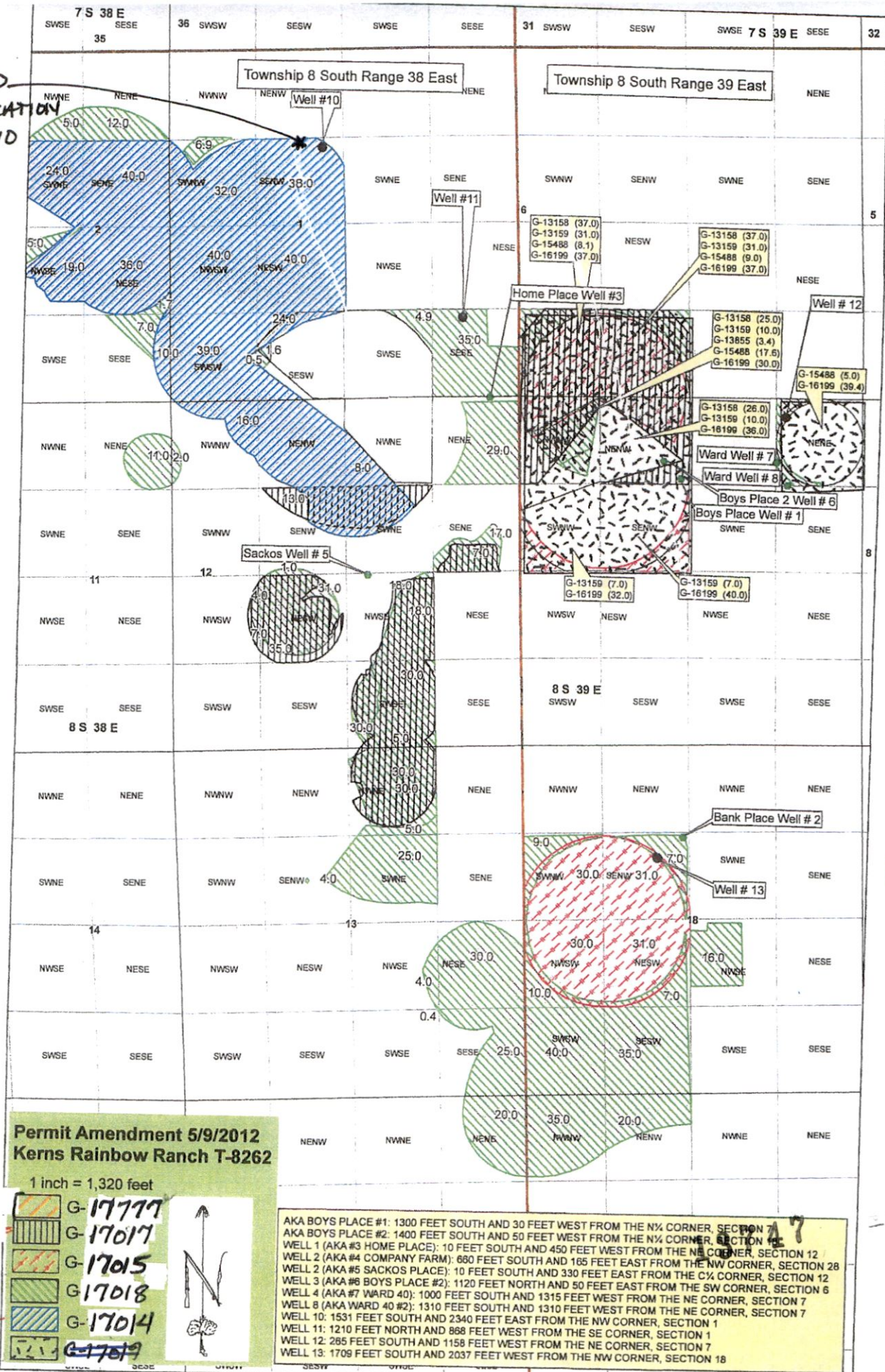
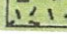


**DROPOSED
NEW LOCATION
WELL #10**



**Permit Amendment 5/9/2012
Kerns Rainbow Ranch T-8262**

1 inch = 1,320 feet

-  G-17777
-  G-17017
-  G-17015
-  G-17018
-  G-17014
-  G-17019

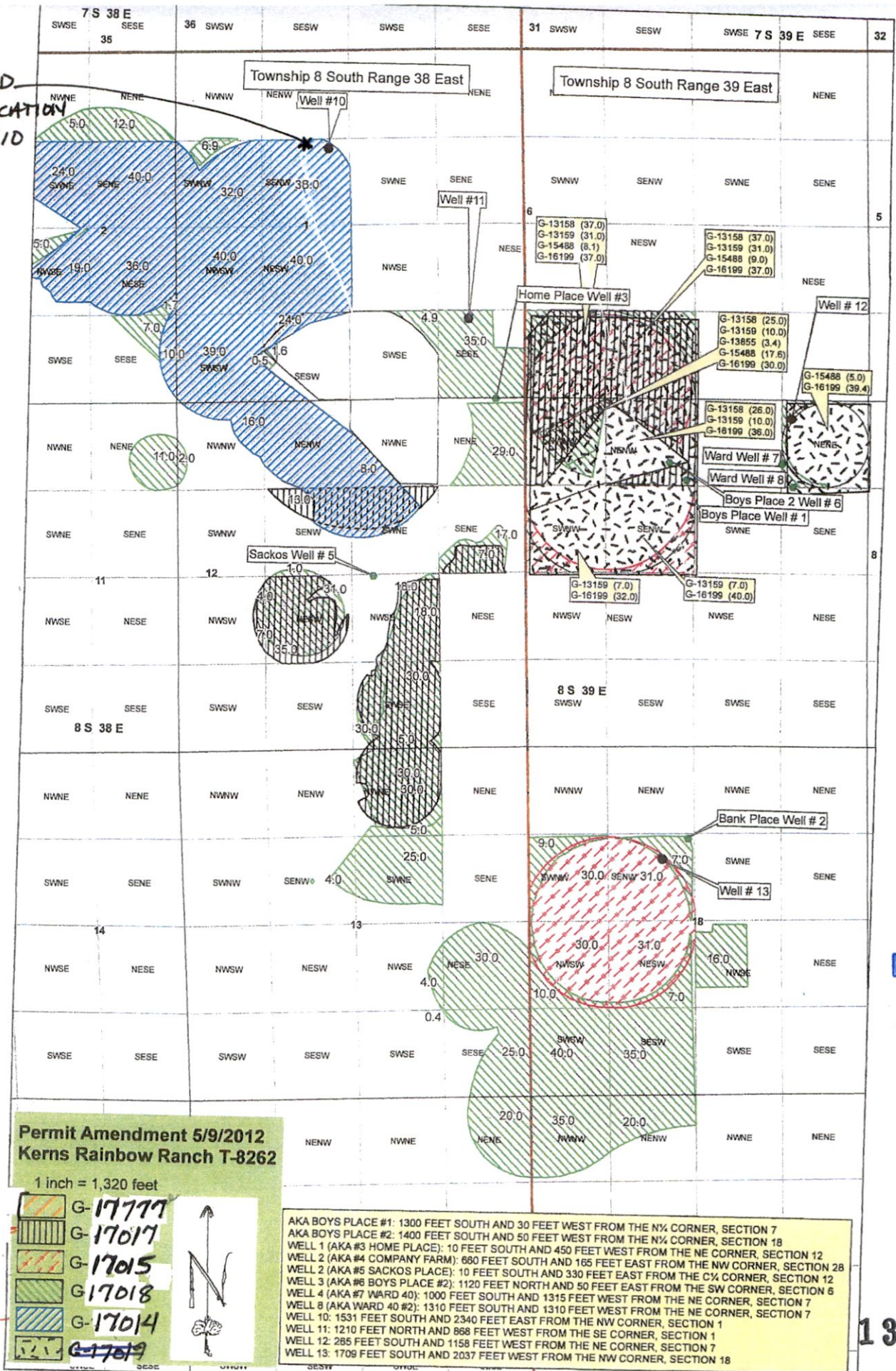


AKA BOYS PLACE #1: 1300 FEET SOUTH AND 30 FEET WEST FROM THE N $\frac{1}{4}$ CORNER, SECTION 7
 AKA BOYS PLACE #2: 1400 FEET SOUTH AND 50 FEET WEST FROM THE N $\frac{1}{4}$ CORNER, SECTION 12
 WELL 1 (AKA #3 HOME PLACE): 10 FEET SOUTH AND 450 FEET WEST FROM THE NE CORNER, SECTION 12
 WELL 2 (AKA #4 COMPANY FARM): 660 FEET SOUTH AND 165 FEET EAST FROM THE NW CORNER, SECTION 28
 WELL 2 (AKA #5 SACKOS PLACE): 10 FEET SOUTH AND 330 FEET EAST FROM THE C $\frac{1}{4}$ CORNER, SECTION 12
 WELL 3 (AKA #6 BOYS PLACE #2): 1120 FEET NORTH AND 50 FEET EAST FROM THE SW CORNER, SECTION 6
 WELL 4 (AKA #7 WARD 40): 1000 FEET SOUTH AND 1315 FEET WEST FROM THE NE CORNER, SECTION 7
 WELL 8 (AKA WARD 40 #2): 1310 FEET SOUTH AND 1310 FEET WEST FROM THE NE CORNER, SECTION 7
 WELL 10: 1531 FEET SOUTH AND 2340 FEET EAST FROM THE NW CORNER, SECTION 1
 WELL 11: 1210 FEET NORTH AND 868 FEET WEST FROM THE SE CORNER, SECTION 1
 WELL 12: 265 FEET SOUTH AND 1158 FEET WEST FROM THE NE CORNER, SECTION 7
 WELL 13: 1709 FEET SOUTH AND 2037 FEET WEST FROM THE NW CORNER, SECTION 18

**RECEIVED
JUN 21 2021
OWRD**

*** PROPOSED NEW LOCATION WELL #10:
1369' S + 3479' W FR. NE CORN. SECT 1
T. 8 S R. 38 E.**

PROPOSED
NEW LOCATION
WELL #10



**Permit Amendment 5/9/2012
Kerns Rainbow Ranch T-8262**

1 inch = 1,320 feet

- G-17777
- G-17017
- G-17015
- G-17018
- G-17014
- G-17019

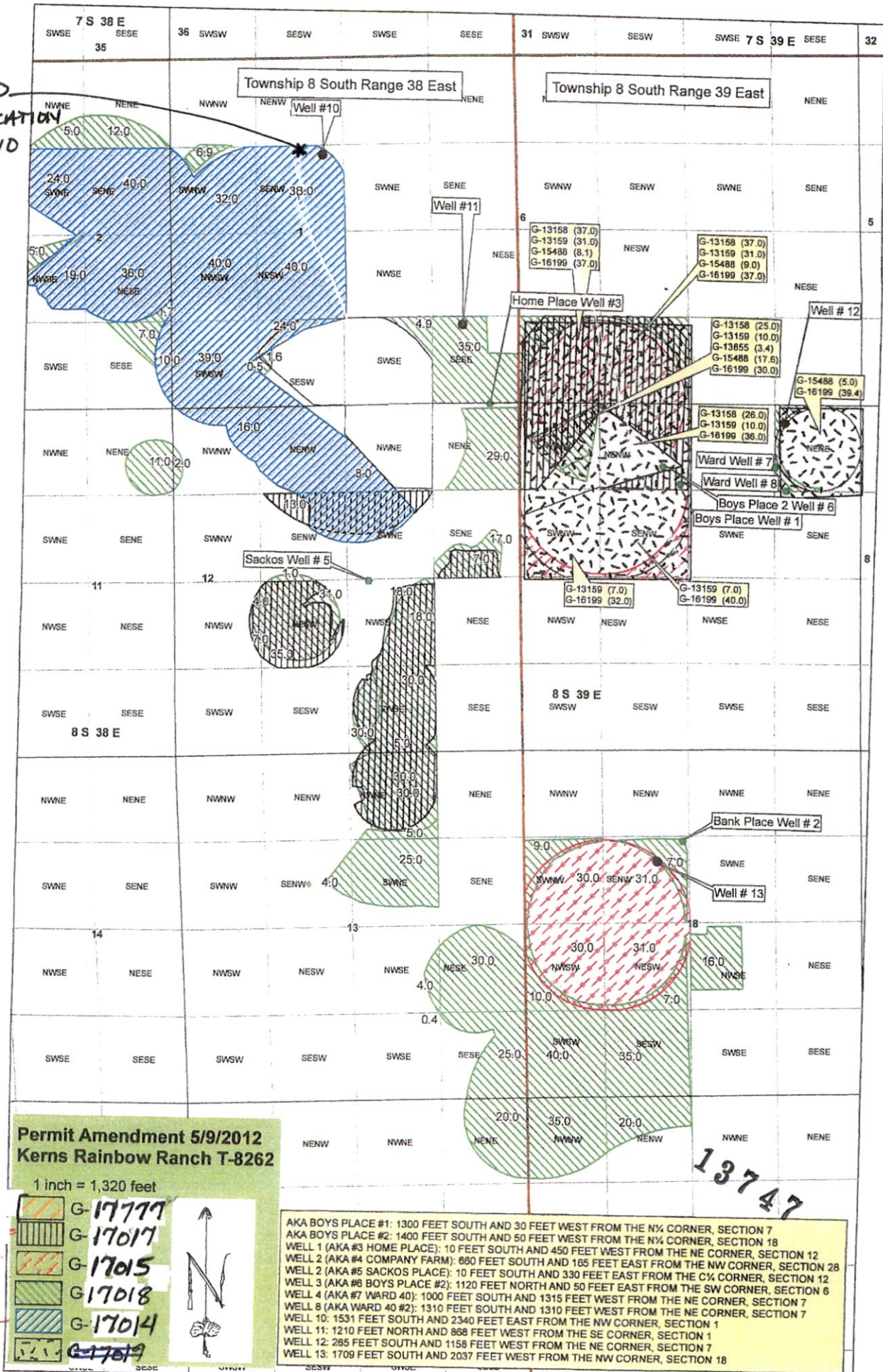


AKA BOYS PLACE #1: 1300 FEET SOUTH AND 30 FEET WEST FROM THE N $\frac{1}{4}$ CORNER, SECTION 7
 AKA BOYS PLACE #2: 1400 FEET SOUTH AND 50 FEET WEST FROM THE N $\frac{1}{4}$ CORNER, SECTION 18
 WELL 1 (AKA #3 HOME PLACE): 10 FEET SOUTH AND 450 FEET WEST FROM THE NE CORNER, SECTION 12
 WELL 2 (AKA #4 COMPANY FARM): 660 FEET SOUTH AND 165 FEET EAST FROM THE NW CORNER, SECTION 28
 WELL 2 (AKA #5 SACKOS PLACE): 10 FEET SOUTH AND 330 FEET EAST FROM THE C $\frac{1}{4}$ CORNER, SECTION 12
 WELL 3 (AKA #6 BOYS PLACE #2): 1120 FEET NORTH AND 50 FEET EAST FROM THE SW CORNER, SECTION 12
 WELL 4 (AKA #7 WARD 40): 1000 FEET SOUTH AND 1315 FEET WEST FROM THE NE CORNER, SECTION 6
 WELL 8 (AKA WARD 40 #2): 1310 FEET SOUTH AND 1310 FEET WEST FROM THE NE CORNER, SECTION 7
 WELL 10: 1531 FEET SOUTH AND 2340 FEET EAST FROM THE NW CORNER, SECTION 7
 WELL 11: 1210 FEET NORTH AND 868 FEET WEST FROM THE SE CORNER, SECTION 1
 WELL 12: 285 FEET SOUTH AND 1158 FEET WEST FROM THE NE CORNER, SECTION 7
 WELL 13: 1709 FEET SOUTH AND 2037 FEET WEST FROM THE NW CORNER, SECTION 18

RECEIVED
JUN 21 2021
OWRD

13747






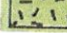
* PROPOSED NEW LOCATION WELL #10:
1369' S + 3479' W FR. NE CORN. SECT 1
T. 8 S R. 38 E.



PROPOSED
NEW LOCATION
WELL #10

Permit Amendment 5/9/2012
Kerns Rainbow Ranch T-8262

1 inch = 1,320 feet

-  G-17777
-  G-17017
-  G-17015
-  G-17018
-  G-17014
-  G-17019

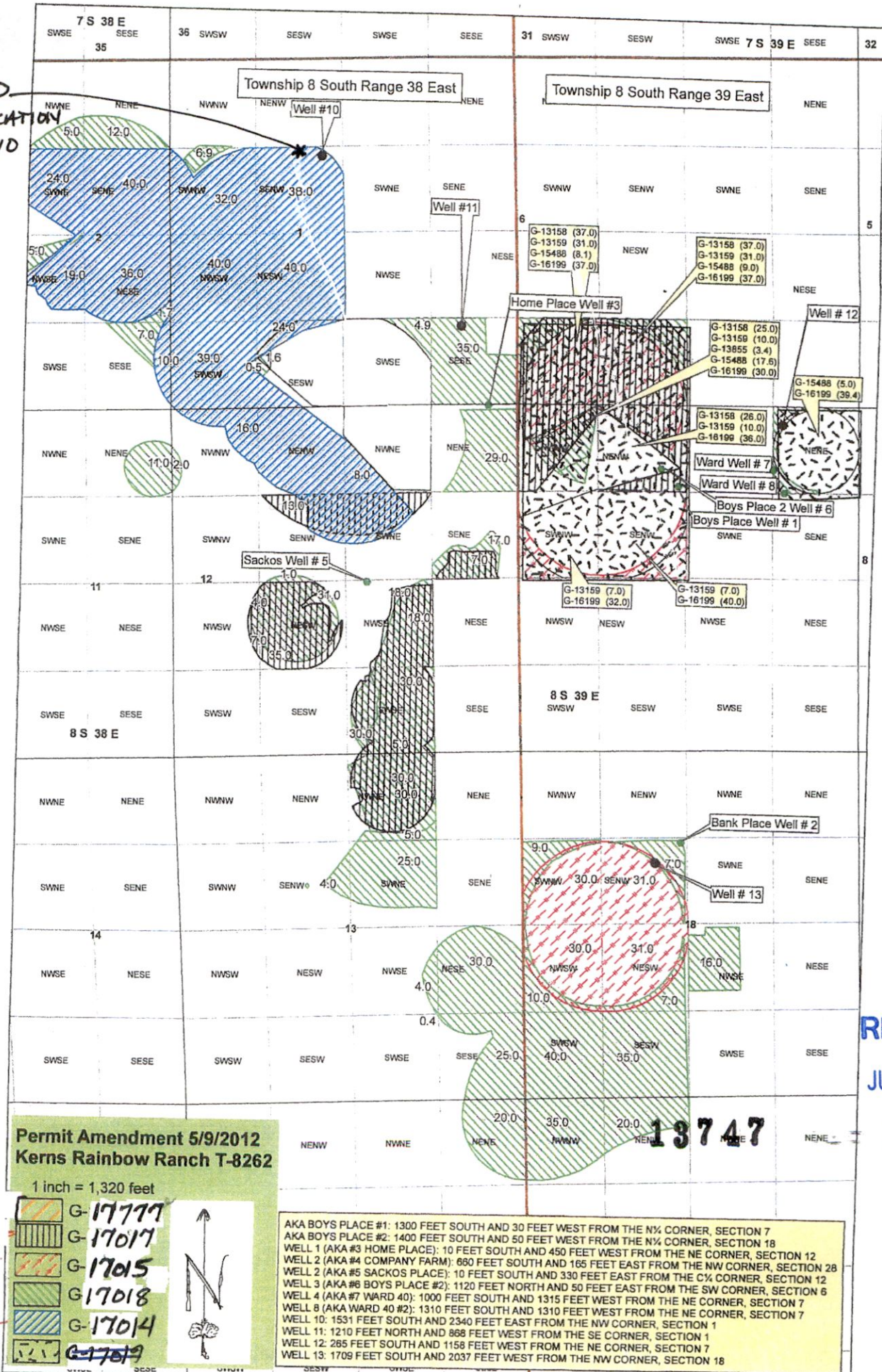


AKA BOYS PLACE #1: 1300 FEET SOUTH AND 30 FEET WEST FROM THE N¼ CORNER, SECTION 7
 AKA BOYS PLACE #2: 1400 FEET SOUTH AND 50 FEET WEST FROM THE N¼ CORNER, SECTION 18
 WELL 1 (AKA #3 HOME PLACE): 10 FEET SOUTH AND 450 FEET WEST FROM THE NE CORNER, SECTION 12
 WELL 2 (AKA #4 COMPANY FARM): 680 FEET SOUTH AND 450 FEET WEST FROM THE NE CORNER, SECTION 12
 WELL 3 (AKA #5 SACKOS PLACE): 10 FEET SOUTH AND 165 FEET EAST FROM THE NE CORNER, SECTION 28
 WELL 4 (AKA #7 WARD 40): 1120 FEET NORTH AND 50 FEET EAST FROM THE SW CORNER, SECTION 6
 WELL 6 (AKA WARD 40 #2): 1000 FEET SOUTH AND 1315 FEET WEST FROM THE NE CORNER, SECTION 7
 WELL 8 (AKA WARD 40 #2): 1310 FEET SOUTH AND 1310 FEET WEST FROM THE NE CORNER, SECTION 7
 WELL 10: 1531 FEET SOUTH AND 2340 FEET EAST FROM THE NW CORNER, SECTION 1
 WELL 11: 1210 FEET NORTH AND 868 FEET WEST FROM THE SE CORNER, SECTION 1
 WELL 12: 285 FEET SOUTH AND 1158 FEET WEST FROM THE NE CORNER, SECTION 7
 WELL 13: 1709 FEET SOUTH AND 2037 FEET WEST FROM THE NW CORNER, SECTION 18

13747

* PROPOSED NEW LOCATION WELL #10:
1369' S & 2479' W FR. NE CORN. SECT 1

RECEIVE
JUN 21 20
OWRD



PROPOSED
NEW LOCATION
WELL #10

Permit Amendment 5/9/2012
Kerns Rainbow Ranch T-8262

1 inch = 1,320 feet

-  G-17777
-  G-17017
-  G-17015
-  G-17018
-  G-17014
-  G-17019



AKA BOYS PLACE #1: 1300 FEET SOUTH AND 30 FEET WEST FROM THE N¼ CORNER, SECTION 7
 AKA BOYS PLACE #2: 1400 FEET SOUTH AND 50 FEET WEST FROM THE N¼ CORNER, SECTION 18
 WELL 1 (AKA #3 HOME PLACE): 10 FEET SOUTH AND 450 FEET WEST FROM THE NE CORNER, SECTION 12
 WELL 2 (AKA #4 COMPANY FARM): 680 FEET SOUTH AND 165 FEET EAST FROM THE NW CORNER, SECTION 28
 WELL 2 (AKA #5 SACKOS PLACE): 10 FEET SOUTH AND 330 FEET EAST FROM THE C¼ CORNER, SECTION 12
 WELL 3 (AKA #6 SACKOS PLACE): 1120 FEET NORTH AND 50 FEET EAST FROM THE SW CORNER, SECTION 6
 WELL 4 (AKA #7 WARD 40): 1000 FEET SOUTH AND 1315 FEET WEST FROM THE NE CORNER, SECTION 7
 WELL 8 (AKA WARD 40 #2): 1310 FEET SOUTH AND 1310 FEET WEST FROM THE NE CORNER, SECTION 7
 WELL 10: 1531 FEET SOUTH AND 2340 FEET EAST FROM THE NW CORNER, SECTION 1
 WELL 11: 1210 FEET NORTH AND 868 FEET WEST FROM THE SE CORNER, SECTION 1
 WELL 12: 265 FEET SOUTH AND 1158 FEET WEST FROM THE NE CORNER, SECTION 7
 WELL 13: 1709 FEET SOUTH AND 2037 FEET WEST FROM THE NW CORNER, SECTION 18

RECEIVED
JUN 21 2021
OWRD

* PROPOSED NEW LOCATION WELL #10:
1369' S ; 2479' W FR. NE CORN. SECT 1