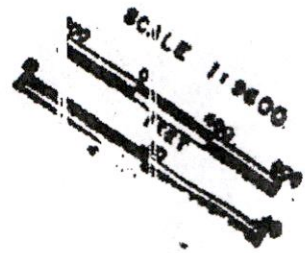


KLAM 54078

RECEIVED

JUL 01 2021

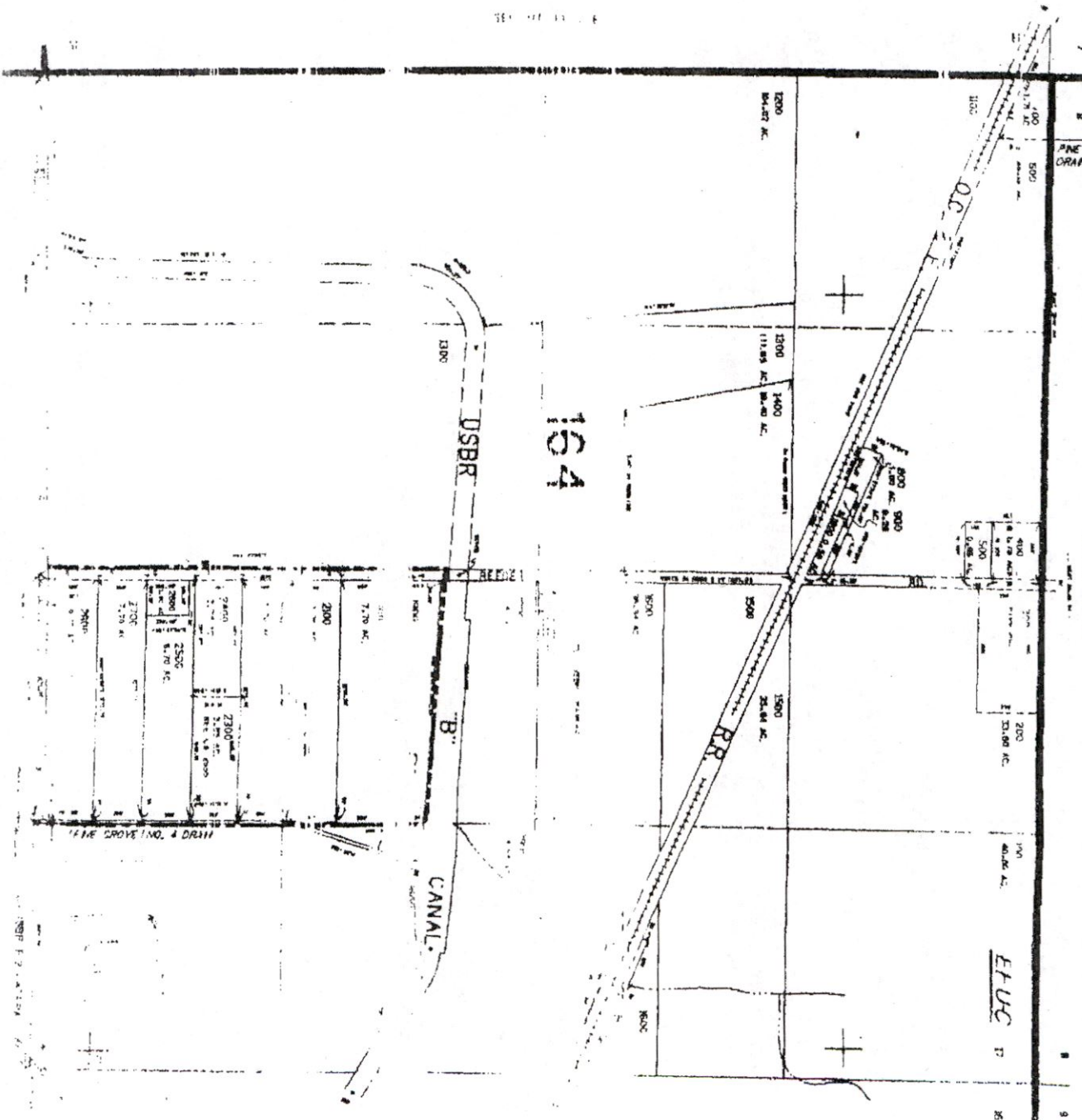
OWRD



THIS MAP WAS PREPARED FOR  
ASSESSMENT PURPOSE ONLY.

SECTION 17, T.33S, R.12E, W.M.  
KLAMATH COUNTY  
E-400

SEE MAP 39 10 08



13758

39 10 17

1986 0000

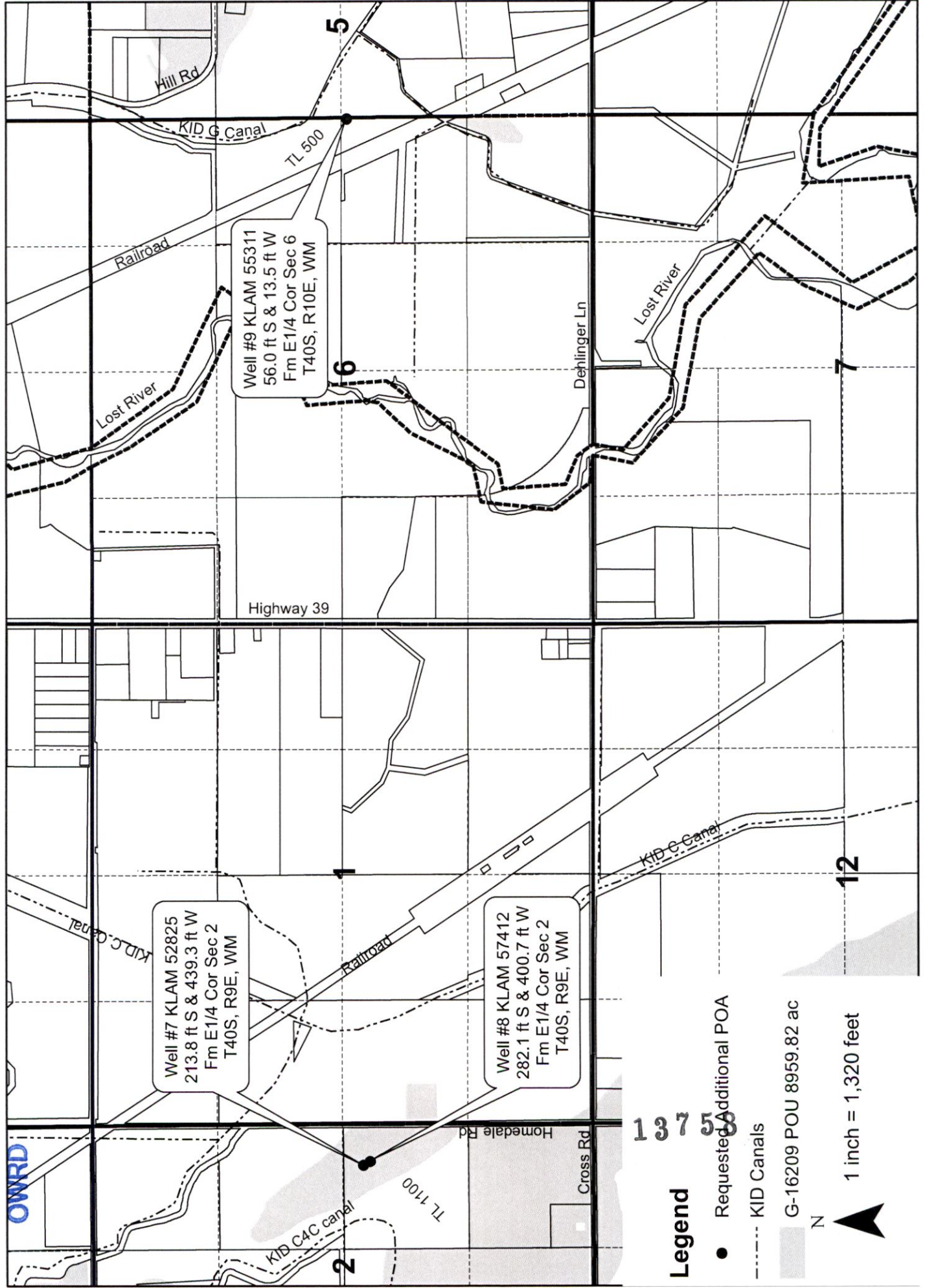
RECEIVED

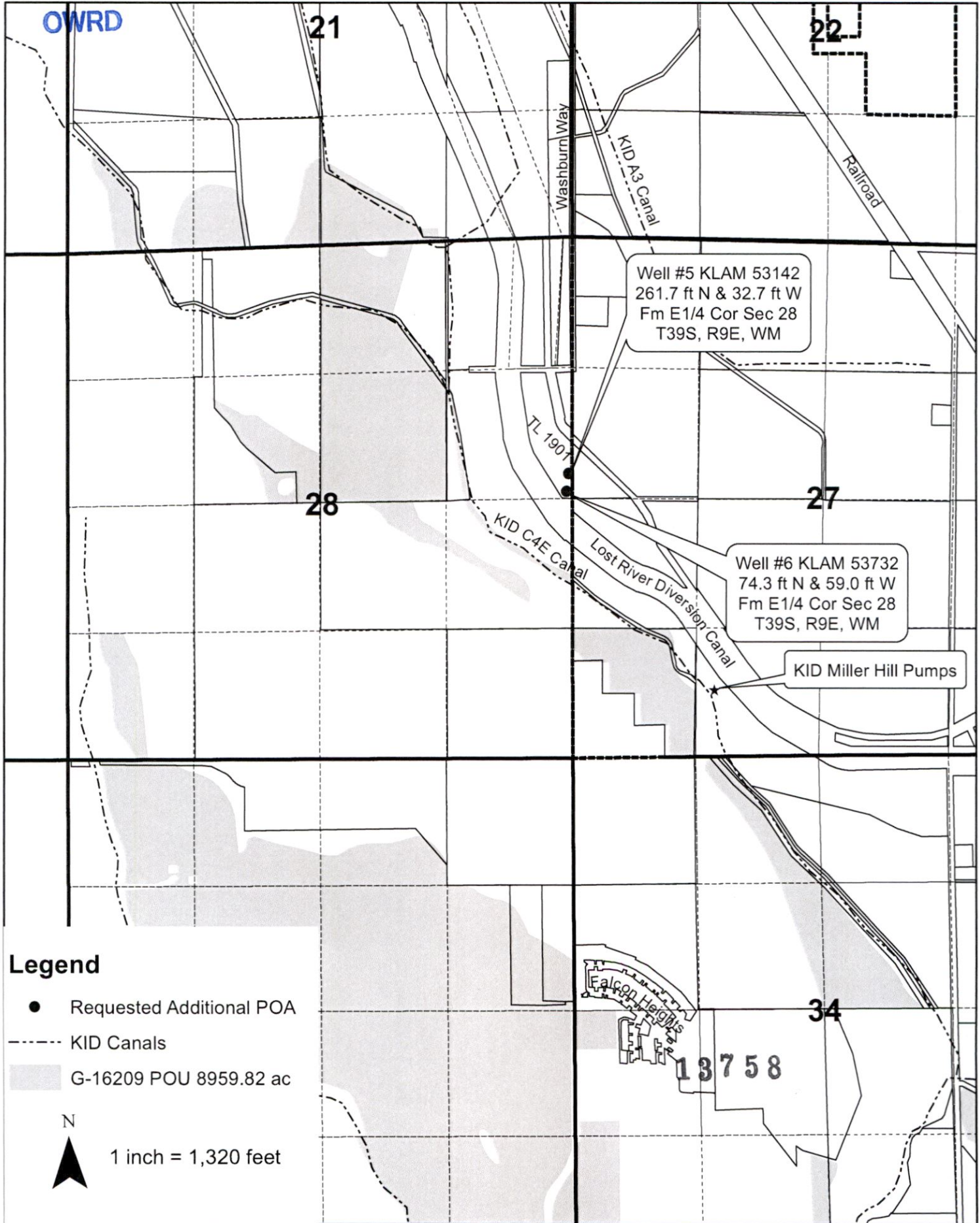
JUL 01 2021

# Klamath Basin Improvement District Permit Amendment Map T-16209

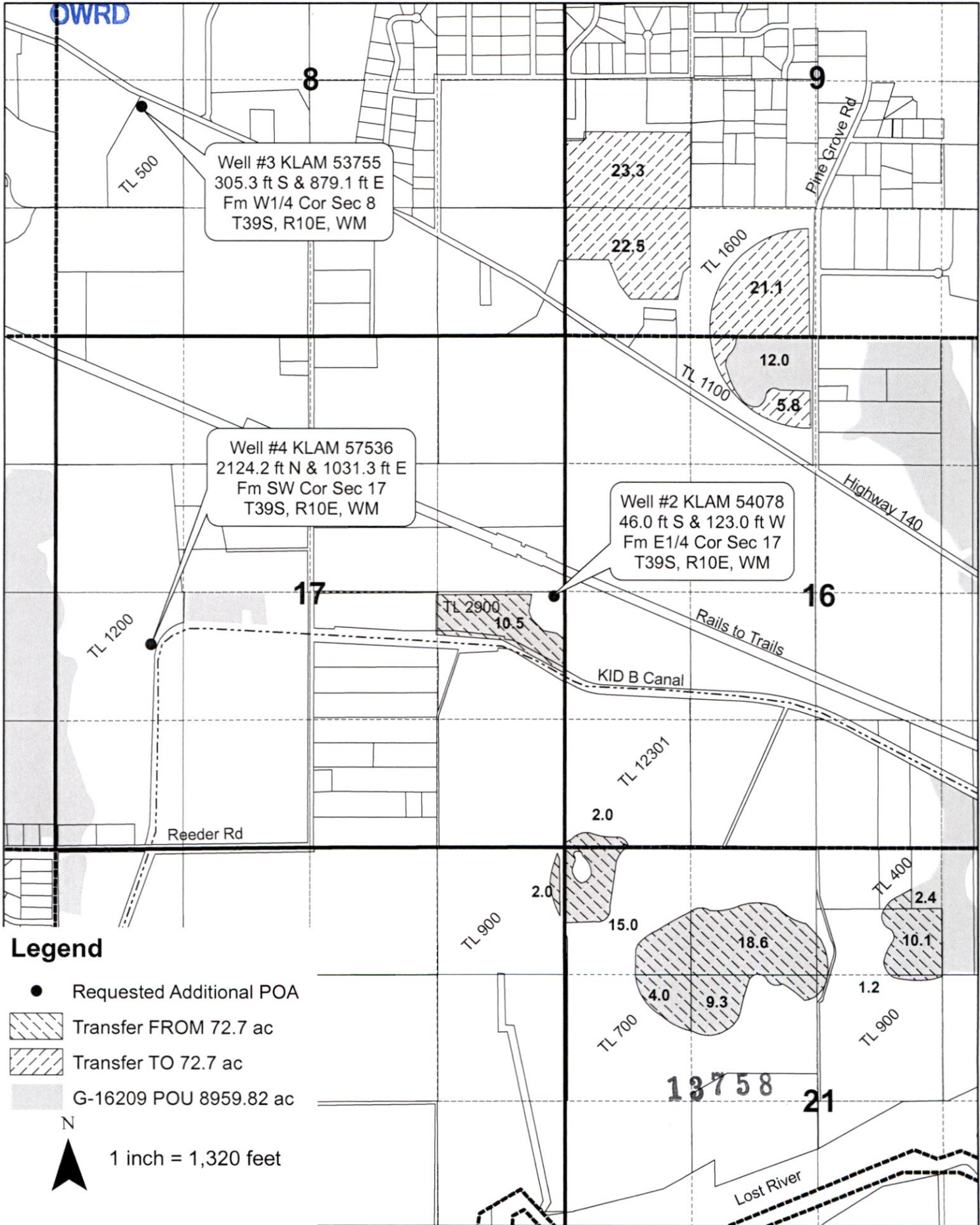
T 40 S, R 9 & 10 E

Map 4 of 4





# Klamath Basin Improvement District Permit Amendment Map G-16209



# Klamath Basin Improvement District Permit Amendment Map T-16209

T 39 S, R 10 E

Sec 27

Map 1 of 4

