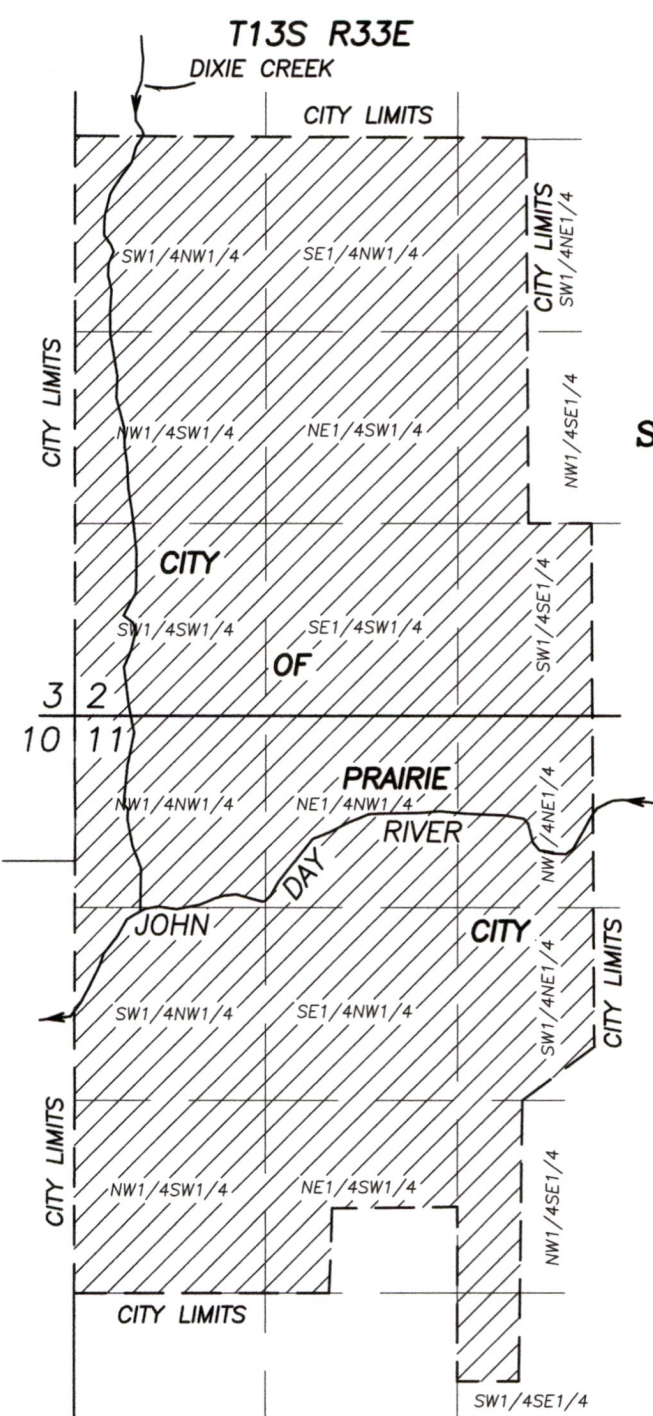


4-2

4-2

4-1

RECEIVED
AUG 10 2021
OWRD



T13S R33E
DIXIE CREEK

CITY LIMITS

CITY LIMITS

CITY LIMITS

CITY LIMITS

CITY LIMITS

CITY LIMITS

CITY LIMITS

CITY LIMITS

CITY LIMITS

CITY LIMITS

SW1/4SE1/4



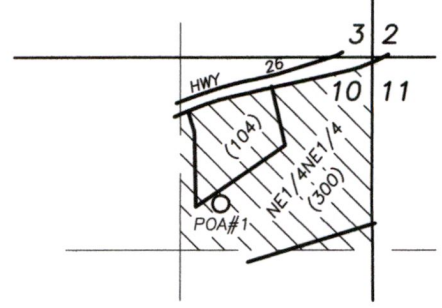
SCALE: 1" = 1320'

RECEIVED

AUG 10 2021

OWRD

POA#1 (C-82329)
Authorized Location
T13S, R33E. WM



APPLICATION MAP
for a
Drought-Temporary Transfer
Change in Place of Use
and Change in Character of Use
for C-82329
in name of
City of Prairie City, Oregon

Authorized POA#1 C-82329 is in the NE1/4NE1/4 Section 10, T.13S., R.33E., W.M. 1000' South & 1040' West from the NE Corner Sec. 10.

- POA
- Proposed POU C-82329 (MUNICIPAL USES)
- Current POU C-82329 (INDUSTRIAL)
- () Tax Lot No.



RENEWS: 6/31/2022

Prepared By:
Michael C. Springer, PLS, CWRE
217 N. Canyon Blvd.
John Day, Oregon
(541) 575-1251
benchmarkls.com

Date: 8/2/2021

DISCLAIMER: THIS MAP IS NOT INTENDED TO PROVIDE LEGAL DIMENSIONS OR LOCATIONS OF PROPERTY BOUNDARY LINES.