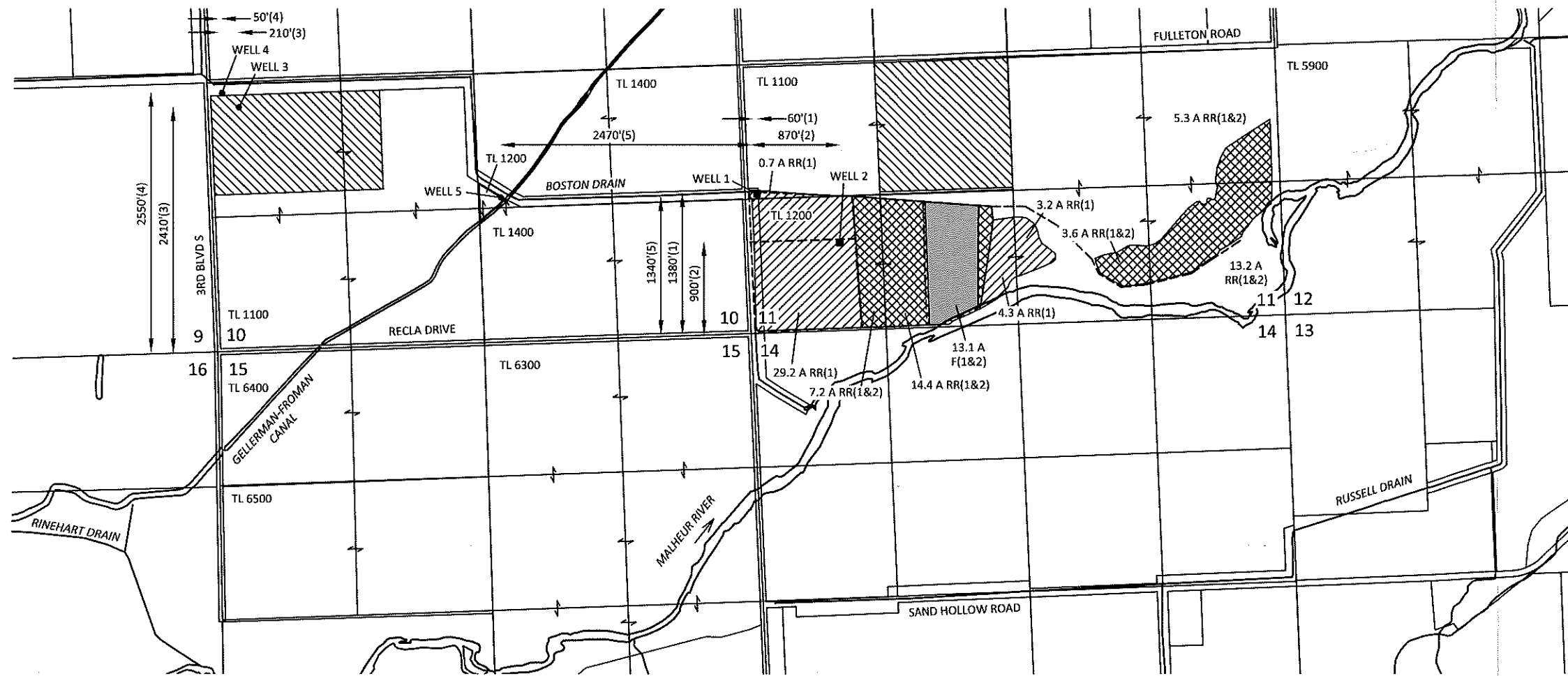


Sections 10 & 11, T19S, R44E, W.M.,
Malheur County, Oregon

TRANSFER APPLICATION MAP
Certificate 42665
Stephen S. Recla and Robert J. Recla

RECEIVED
AUG 20 2021
OWRD



EXPLANATION

FROM LANDS (F)

PRIMARY IRRIGATION - WELLS 1 & 2
PRIORITY: 12/13/1967
13.1 ACRES

TO LANDS

AGRICULTURE USE
PRIORITY: 12/13/1967

REMAINING RIGHTS (RR)

PRIMARY IRRIGATION - WELL 1
PRIORITY: 12/13/1967
37.4 ACRES

PRIMARY IRRIGATION - WELLS 1 & 2
PRIORITY: 12/13/1967
43.7 ACRES

AUTHORIZED WELL

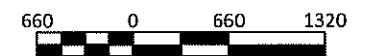
PROPOSED WELL

DITCH

13800



SCALE



1 INCH = 1320 FEET

August 11, 2021

This map is not intended to provide legal
dimensions or locations of property
ownership lines

Figure 1

CERTIFIED WATER RIGHT EXAMINER
439
St. R. Bruce
STEVEN R. BRUCE
JUNE 13, 1997
STATE OF OREGON
Exp. 12/31/2021

SKOOKUM

WATER ASSOCIATES INC

1626 VICTORIAN WAY
EUGENE, OR 97401
(503) 319-8926

KPFF - 1700014.89