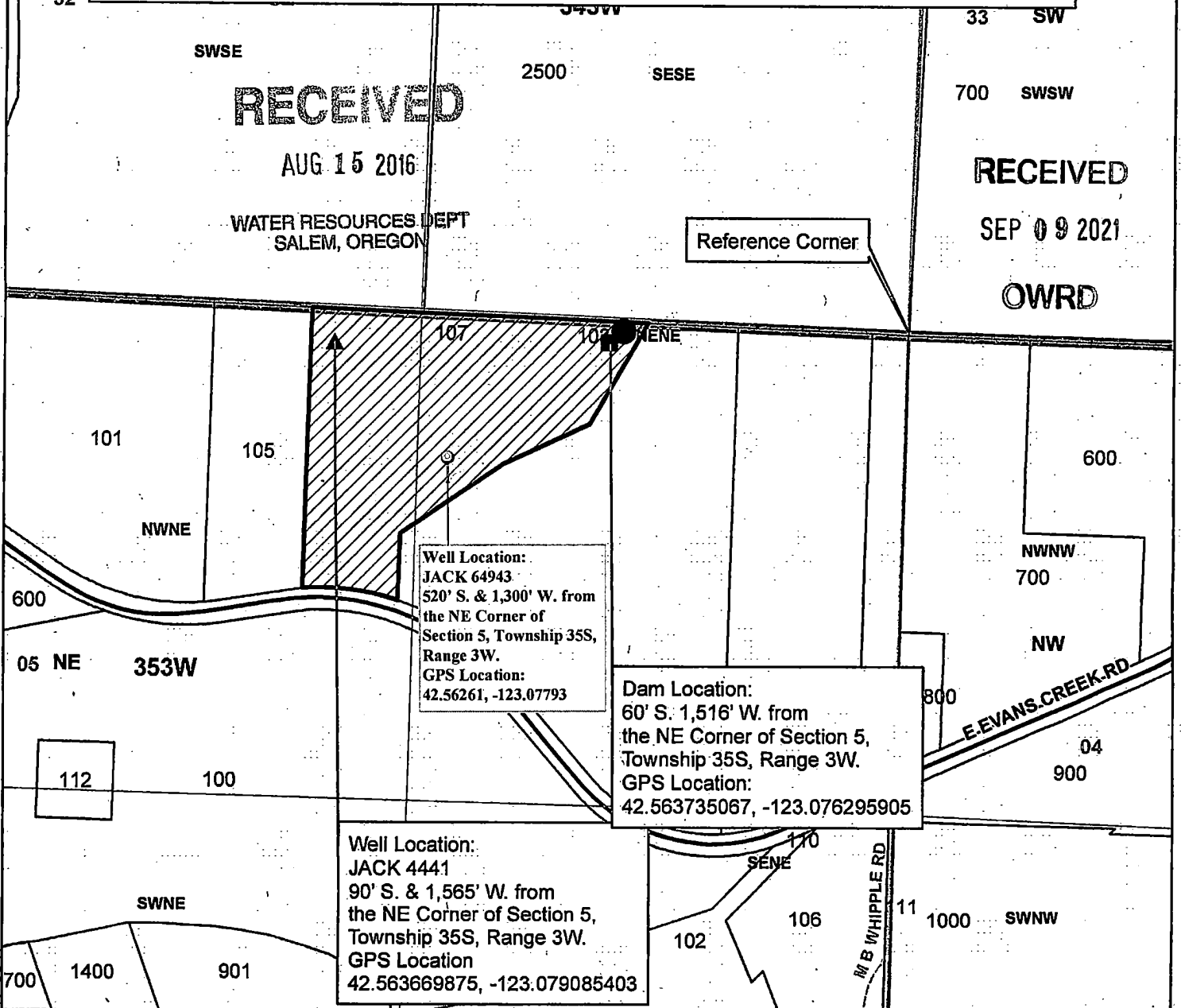


Groundwater Application for Randall and Gina Rice 35S-3W-05-Tax Lot 107

Place of Use:
 NW/NE: 5.1 Acres of Nursery
 NE/NE: 4.9 Acres of Nursery
 NE/NE: 1 Acre Feet of Multi-Purpose Storage



RECEIVED

AUG 15 2016

WATER RESOURCES DEPT
SALEM, OREGON

Reference Corner

RECEIVED

SEP 09 2021

OWRD

Well Location:
 JACK 64943
 520' S. & 1,300' W. from
 the NE Corner of
 Section 5, Township 35S,
 Range 3W.
 GPS Location:
 42.56261, -123.07793

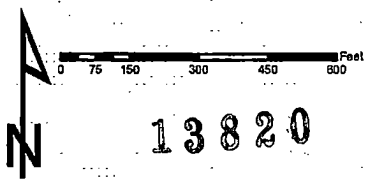
Dam Location:
 60' S. 1,516' W. from
 the NE Corner of Section 5,
 Township 35S, Range 3W.
 GPS Location:
 42.563735067, -123.076295905

Well Location:
 JACK 4441
 90' S. & 1,565' W. from
 the NE Corner of Section 5,
 Township 35S, Range 3W.
 GPS Location
 42.563669875, -123.079085403

Legend

- Lake Montana
- Dam Location
- ▲ Well Location
- ▨ Place of Use
- Taxlot 107
- Taxlots
- ▭ Townships
- ▭ Sections
- ▭ Quarter Sections
- ▭ Quarter Quarter Sections
- ⊙ Additional Well Location

1 inch = 400 feet



JACKSON COUNTY
WATERMASTER

Prepared by Travis Kelly

This map is based on a digital database compiled by Jackson County from a variety of sources. Jackson County cannot accept responsibility for errors, omissions, or positional accuracy. There are no warranties, expressed or implied.

6-18867