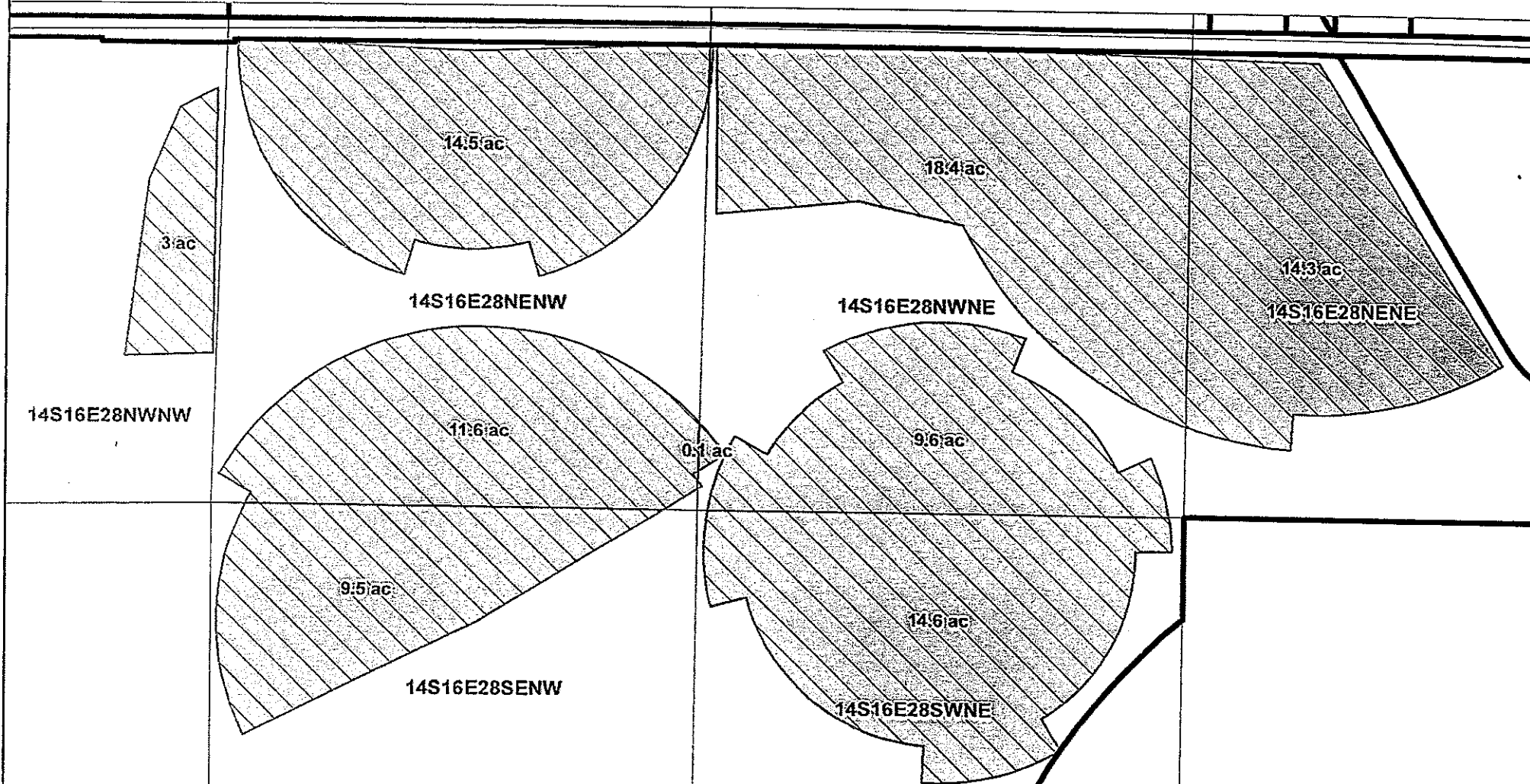


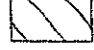



Crook County, DeBaca Land and Cattle Co, 95.6 Acres



Twn	Rng	Sec	Location	Tax Lot	Acres
14S	16E	28	NE-NE	1601	14.3
14S	16E	28	NE-NW	1601	14.5
14S	16E	28	NE-NW	1601	11.6
14S	16E	28	NW-NE	1601	18.4
14S	16E	28	NW-NE	1601	9.6
14S	16E	28	NW-NE	1601	0.1
14S	16E	28	NW-NW	1601	3
14S	16E	28	SE-NW	1601	9.5
14S	16E	28	SW-NE	1601	14.6

-  Tax Lot
-  Transfer
-  Cert 82246
-  Quarter Quarter

Certificate #:
82246

FINAL PROOF MAP
T- 13091

N
▲

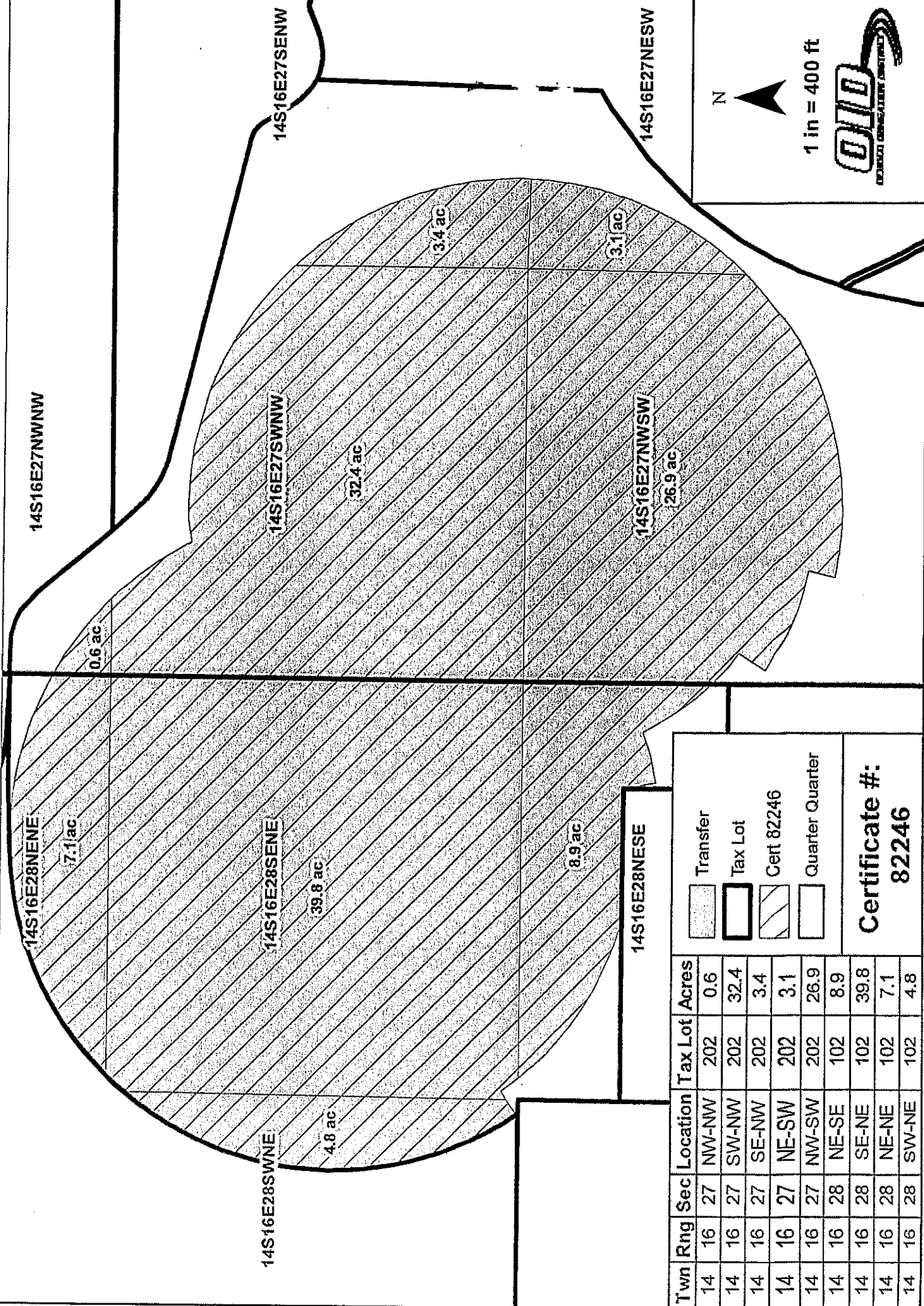
1 in = 400 ft

OID
CREATED BY ORIGINATOR CONTRACT

13091

FINAL PROOF MAP
T-13091

Crook County, Michael Stafford, 127.0 Acres



Twn	Rng	Sec	Location	Tax Lot	Acres
14	16	27	NW-NW	202	0.6
14	16	27	SW-NW	202	32.4
14	16	27	SE-NW	202	3.4
14	16	27	NE-SW	202	3.1
14	16	27	NW-SW	202	26.9
14	16	28	NE-SE	102	8.9
14	16	28	SE-NE	102	39.8
14	16	28	NE-NE	102	7.1
14	16	28	SW-NE	102	4.8

<input type="checkbox"/>	Transfer
<input checked="" type="checkbox"/>	Tax Lot
<input type="checkbox"/>	Cert 82246
<input type="checkbox"/>	Quarter Quarter

Certificate #:
82246

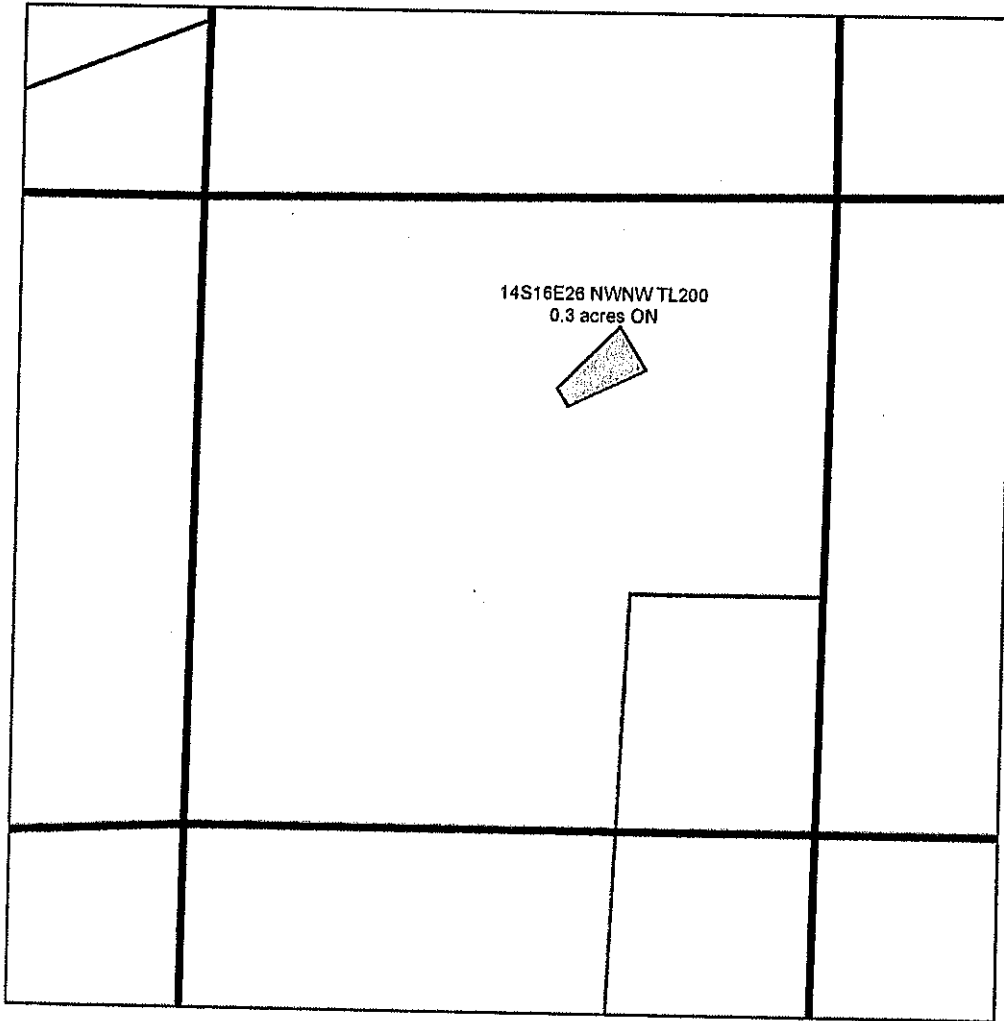
Crook County

T 14S R 16E Sec. 26 Tax Lot 200

NW Of The NW



ON Map



1 in = 400 ft

Certificate #: 82246



Transfer



Less than 5 acres



Cert 82246 IR



Cert 82247 IR



Tax Lot



Cert 82246 IR / 82247 IS



Cert 82249 IS



QQ



FINAL PROOF MAP - T-13091

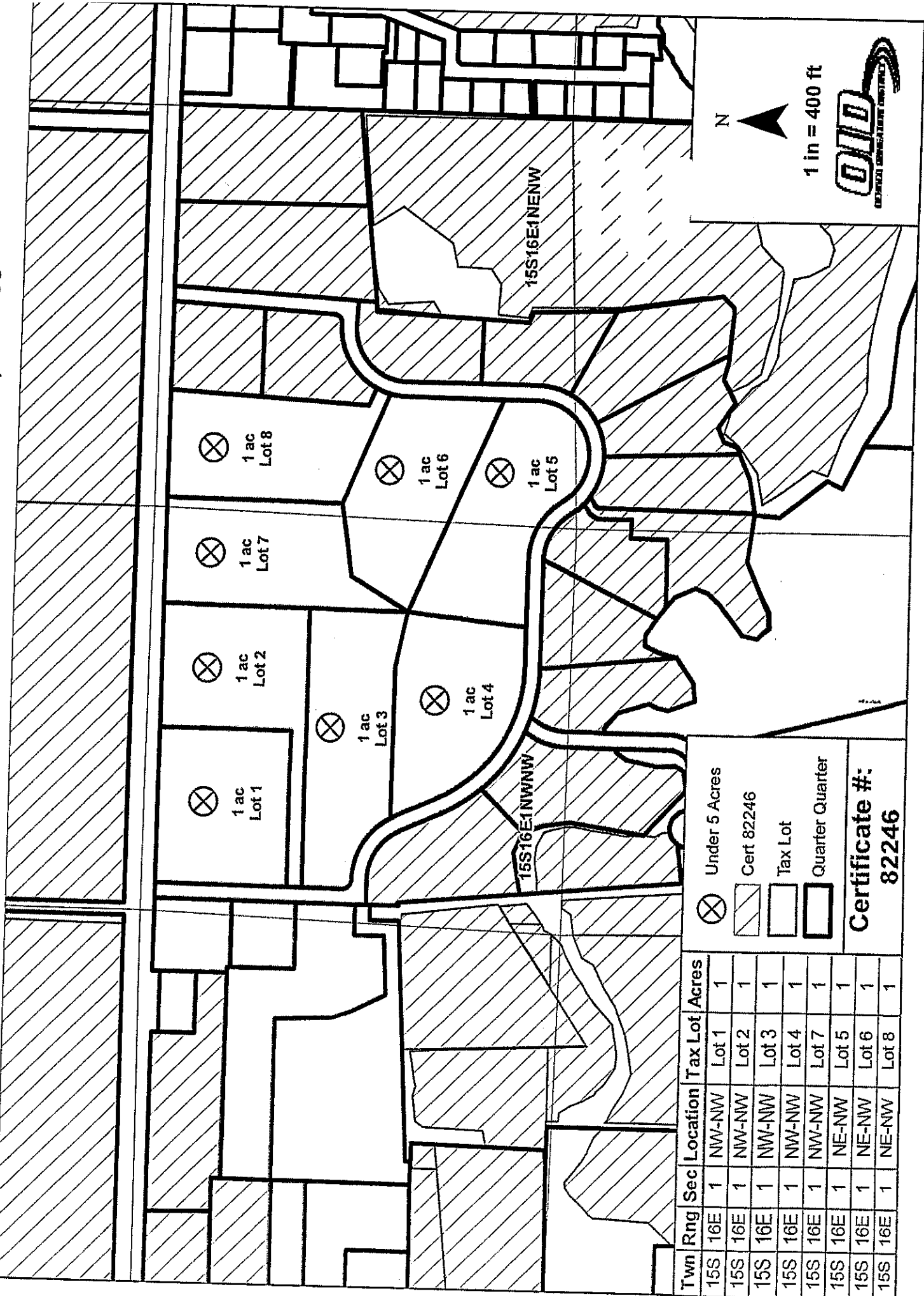
James Petersen

Acres: 0.3 acres ON

13091

FINAL PROOF MAP
T-13091

Crook County, DeBaca Land & Cattle Co, 8 Acres



- Under 5 Acres
- Cert 82246
- Tax Lot
- Quarter Quarter

Certificate #:
82246

Twn	Rng	Sec	Location	Tax Lot	Acres
15S	16E	1	NW-NW	Lot 1	1
15S	16E	1	NW-NW	Lot 2	1
15S	16E	1	NW-NW	Lot 3	1
15S	16E	1	NW-NW	Lot 4	1
15S	16E	1	NW-NW	Lot 7	1
15S	16E	1	NE-NW	Lot 5	1
15S	16E	1	NE-NW	Lot 6	1
15S	16E	1	NE-NW	Lot 8	1

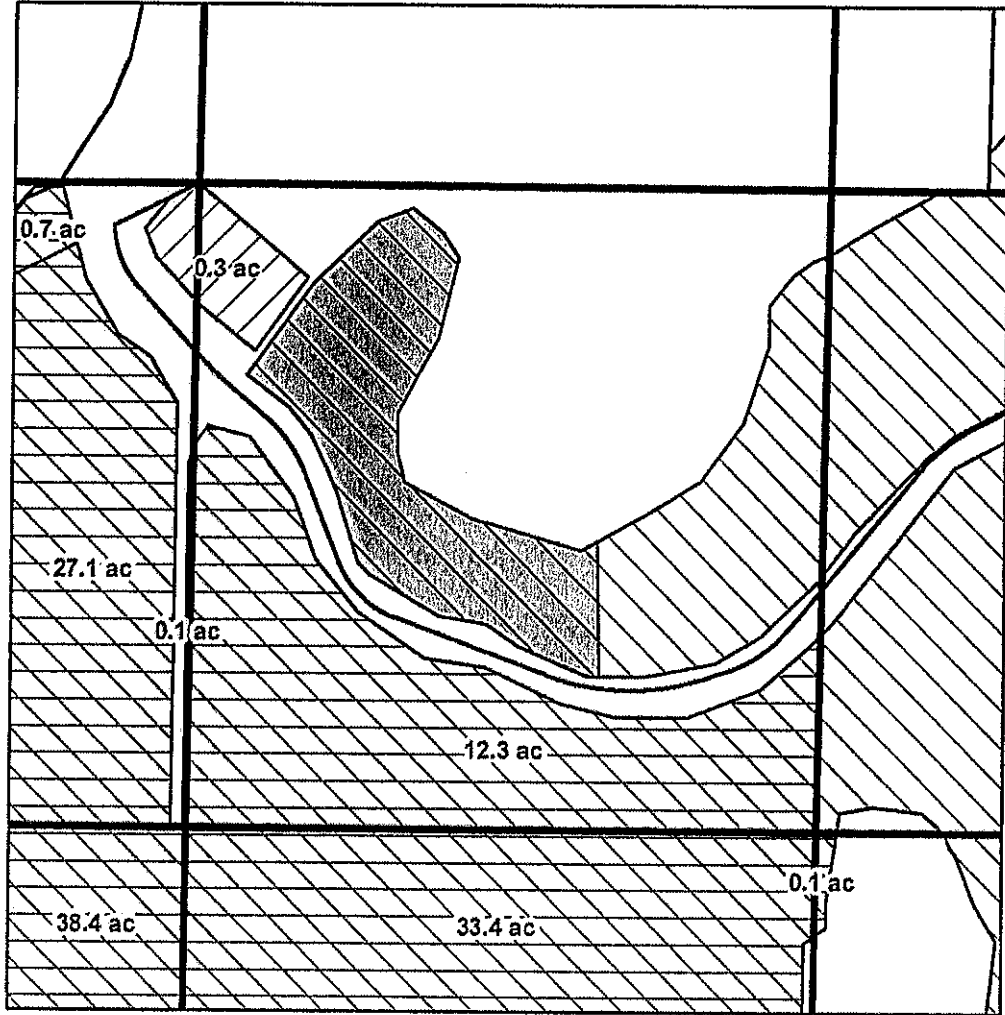
Crook County

T 14S R 16E Sec. 20 Tax Lot 901

NW Of The SW



ON Map



1 in = 400 ft

Certificate #: 82247 IS

- | | | |
|-------------------|---------------|--------------------------|
| Transfer | Cert 82246 IR | Cert 82246 IR / 82247 IS |
| Less than 5 acres | Cert 82247 IR | Cert 82249 IS |
| | Tax Lot | QQ |

FINAL PROOF MAP - T-13091

Mark Stafford

Acres: 6.0 acres On 82247 Supplemental



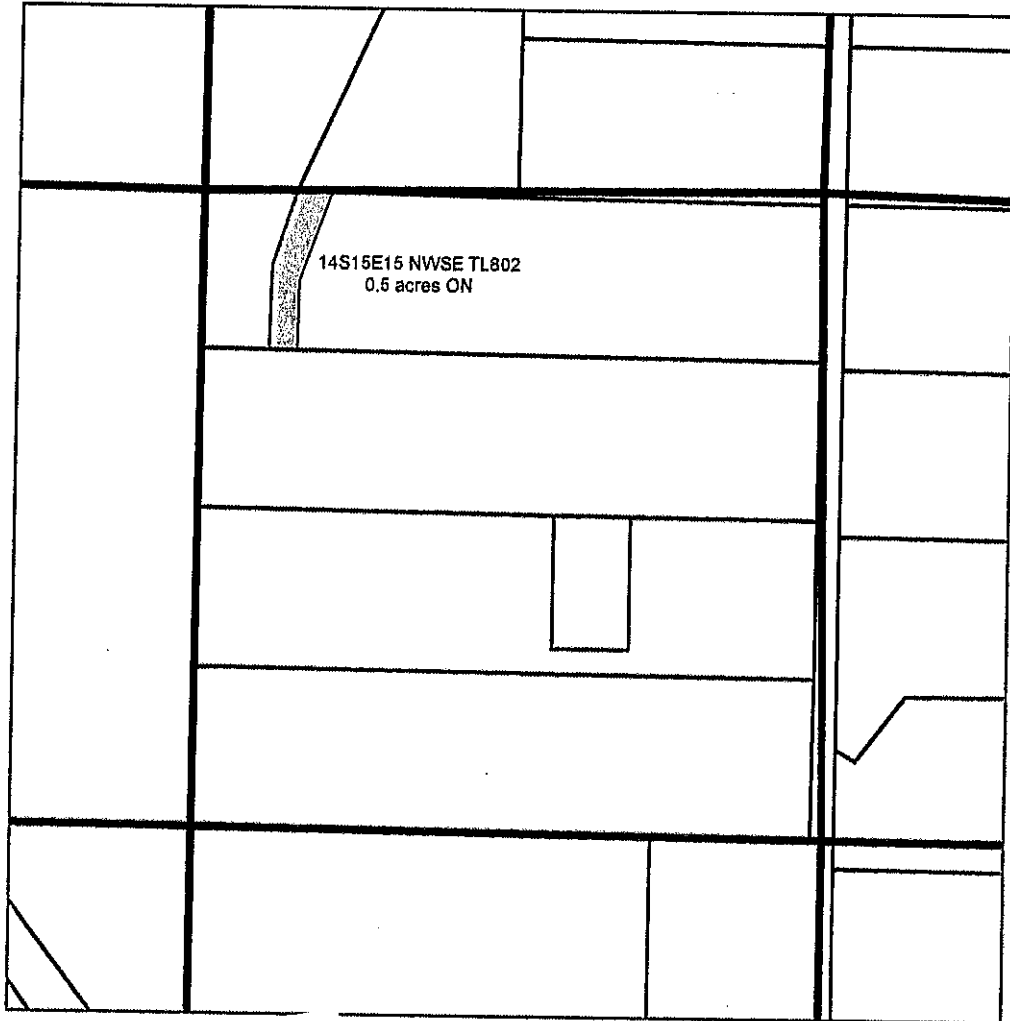
Crook County

T 14S R 15E Sec. 15 Tax Lot 802

NW Of The SE




ON Map





1 in = 400 ft

Certificate #: 82246 IR, 82247 IS


 Transfer


 Less than 5 acres

 Cert 82246 IR

 Cert 82247 IR

 Tax Lot

 Cert 82246 IR / 82247 IS

 Cert 82249 IS

 QQ



FINAL PROOF MAP - T. 13091

Timothy B. Cooley

Acres: 0.5 acres ON

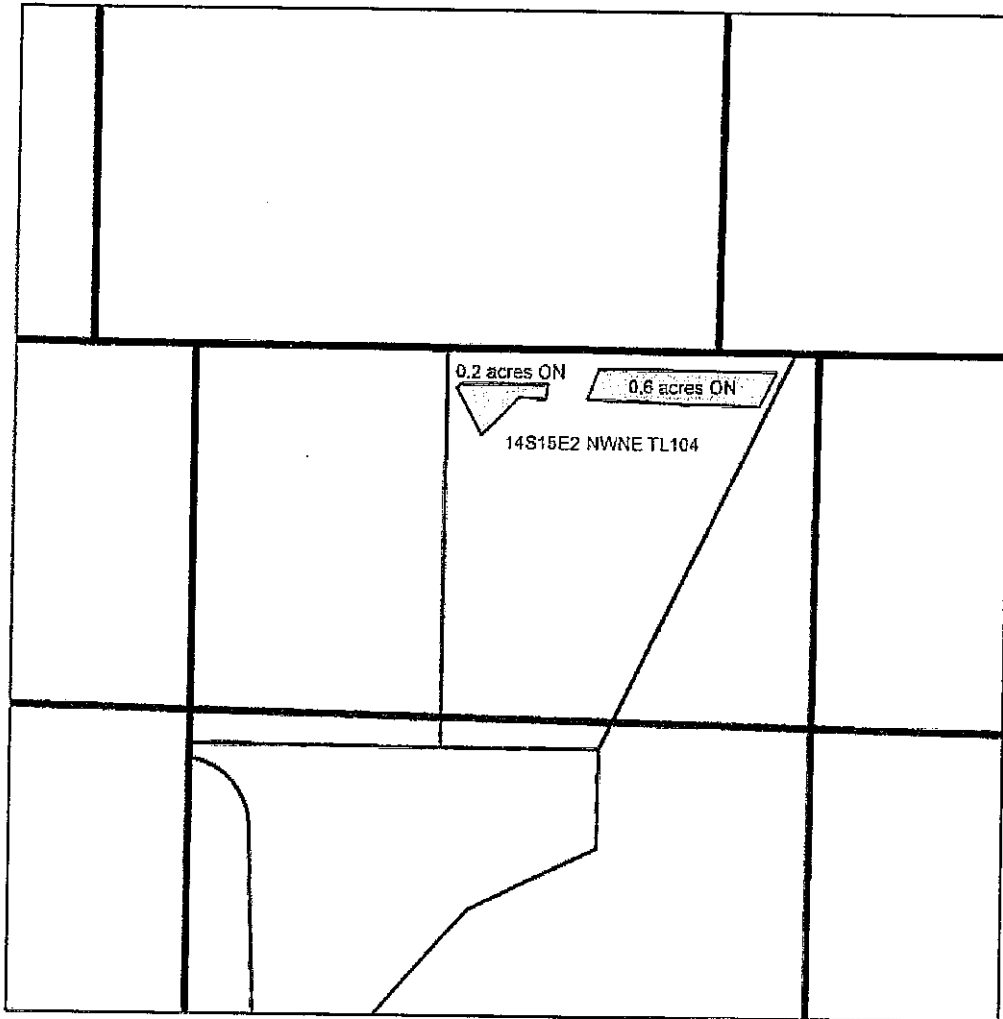
Crook County

T 14S R 15E Sec. 2 Tax Lot 104

NW Of The NE











ON Map



1 in = 400 ft

Certificate #: 82246 IR, 82247 IS

- | | | |
|-------------------------------------------------------------------------------------------------------|---------------------------------------------------------------------------------------------------|--------------------------------------------------------------------------------------------------------------|
|  Transfer |  Cert 82246 IR |  Cert 82246 IR / 82247 IS |
|  Less than 5 acres |  Cert 82247 IR |  Cert 82249 IS |
| |  Tax Lot |  QQ |



FINAL PROOF MAP T-13091

Jody Cross

Acres: 0.8 acres ON

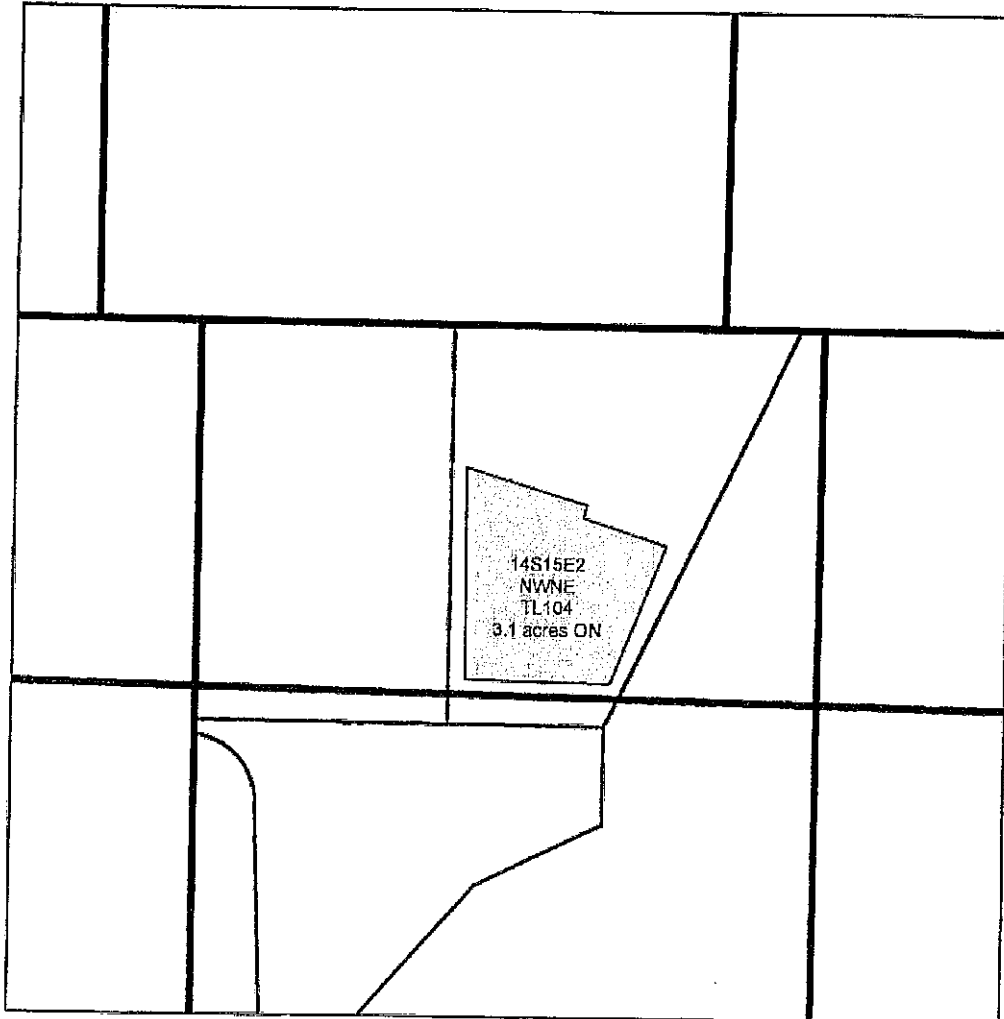
Crook County

T 14S R 15E Sec. 2 Tax Lot 104

NW Of The NE



ON Map



1 in = 400 ft

Certificate #: 82246 IR, 82247 IS



Transfer



Less than 5 acres



Cert 82246 IR



Cert 82247 IR



Tax Lot



Cert 82246 IR / 82247 IS



Cert 82249 IS



QQ



FINAL PROOF MAP - T-13091

Jody Cross

Acres: 3.1 acres ON

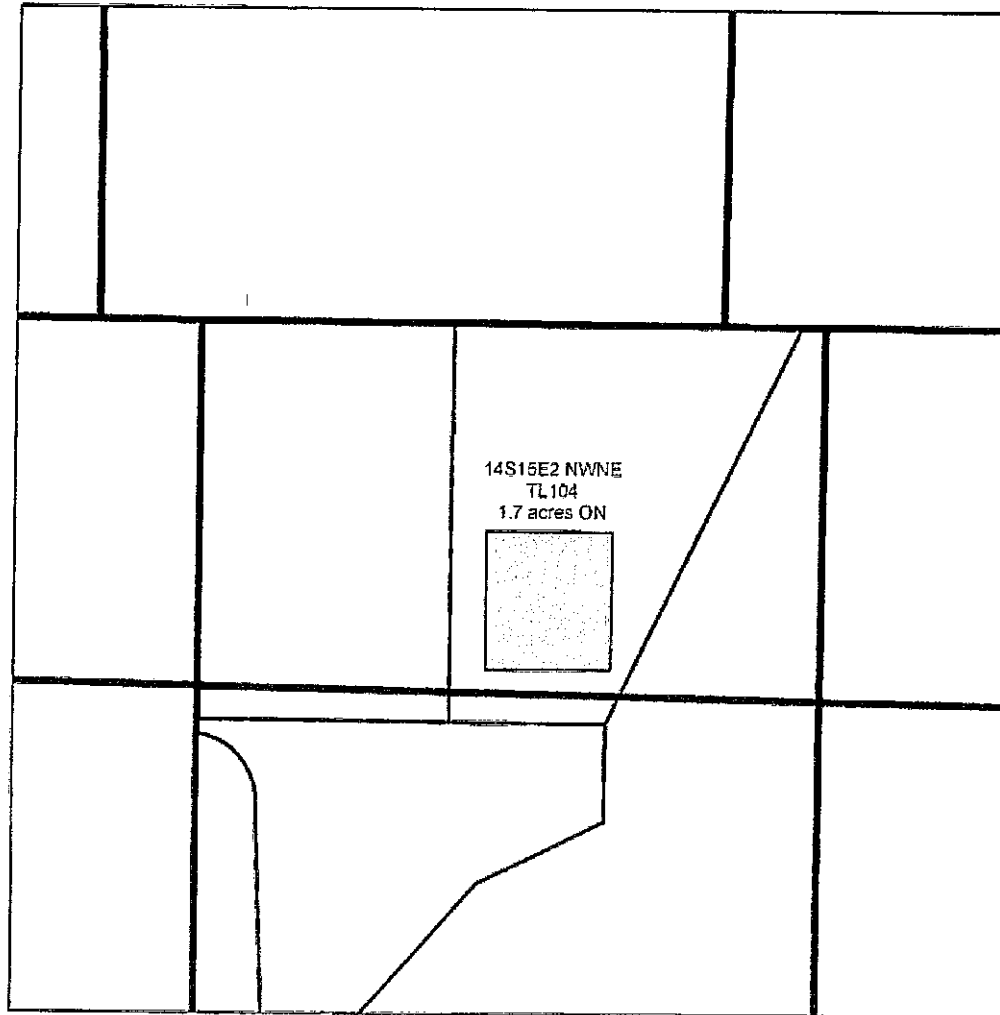
Crook County

T 14S R 15E Sec. 2 Tax Lot 104

NW Of The NE

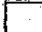
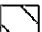
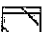

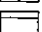
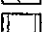




ON Map



1 in = 400 ft

Certificate #: 82249 IS

- | | | |
|-------------------------------------------------------------------------------------------------------|---------------------------------------------------------------------------------------------------|--------------------------------------------------------------------------------------------------------------|
|  Transfer |  Cert 82246 IR |  Cert 82246 IR / 82247 IS |
|  Less than 5 acres |  Cert 82247 IR |  Cert 82249 IS |
|  Tax Lot |  QQ | |

FINAL PROOF MAP - T-13091

Jody Cross

Acres: 1.7 acres ON



Crook County

T 14S R 16E Sec. 28 Tax Lot 1601

Received by OWRD

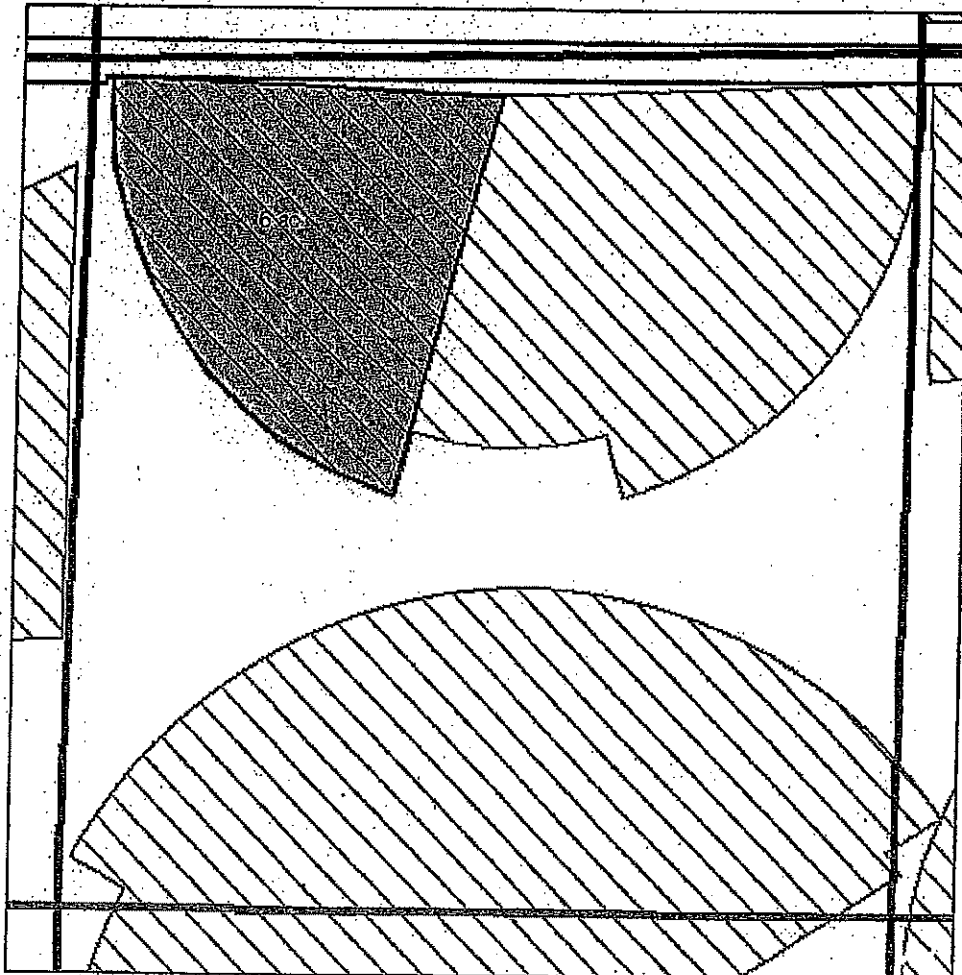
NE Of The NW

SEP 09 2021

Salem, OR





ON Map



1 in = 400 ft

Certificate #: 82267 IS - 82268 IS

 Transfer

 Cert 82246 IR

FINAL PROOF MAP - T-13091

Debaca Land and Cattle Co

Acres: 6.0 acres On