

RECEIVED

JAN 12 2022

Section 20, T2S, R3E, W.M.,
Clackamas County, Oregon

OWRD

TEMPORARY TRANSFER APPLICATION MAP

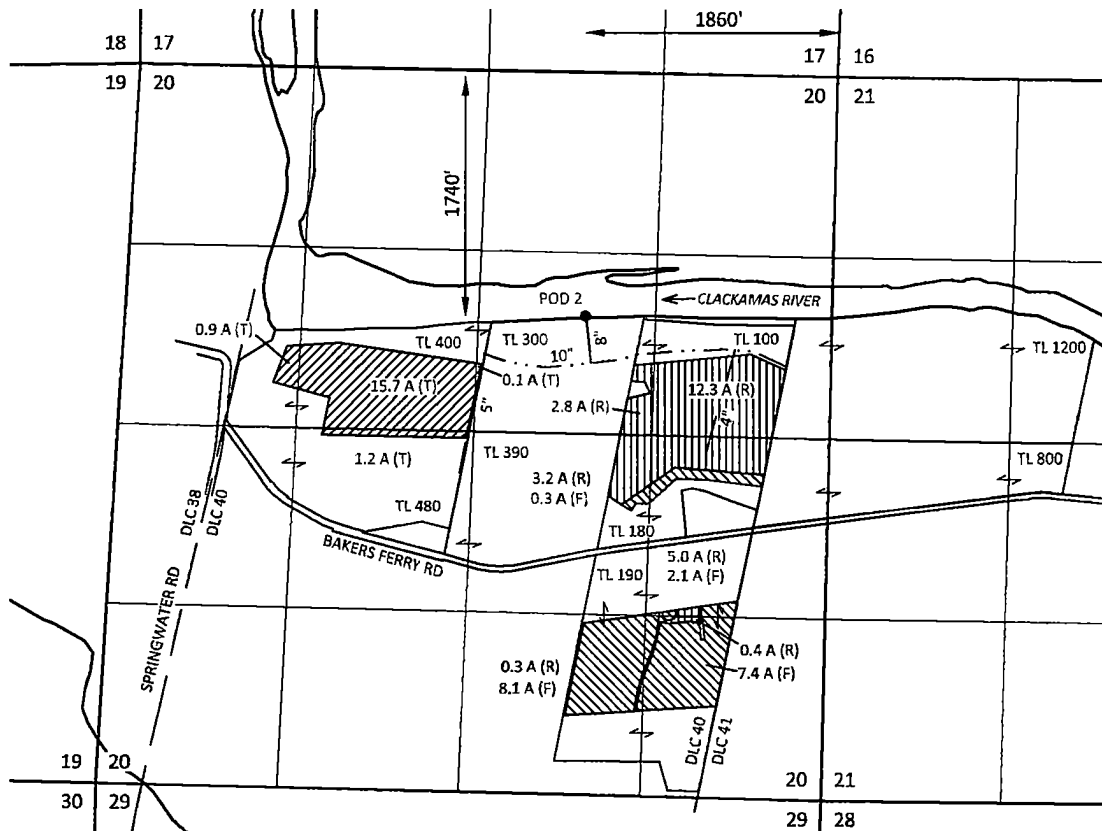
RECEIVED

Certificates 38799

JAN 03 2022

Cal Farms, Inc.

OWRD



EXPLANATION

FROM LANDS (F)



CERTIFICATE 38799 - IRRIGATION
PRIORITY: 5/22/1963
17.9 ACRES

TO LANDS (T)



CERTIFICATE 38799 - IRRIGATION
PRIORITY: 5/22/1963
17.9 ACRES

REMAINING RIGHTS (R)



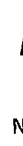
CERTIFICATE 38799 - IRRIGATION
PRIORITY: 5/22/1963
24.0 ACRES



POINT OF DIVERSION (POD)



PIPE



SCALE



1 INCH = 1320 FEET

November 29, 2021

This map is not intended to provide legal
dimensions or locations of property
ownership lines

Figure 1

SKOOKUM
WATER ASSOCIATES INC.

1626 VICTORIAN WAY
EUGENE, OR 97401
(503) 319-8926

KPFF 1700014.91