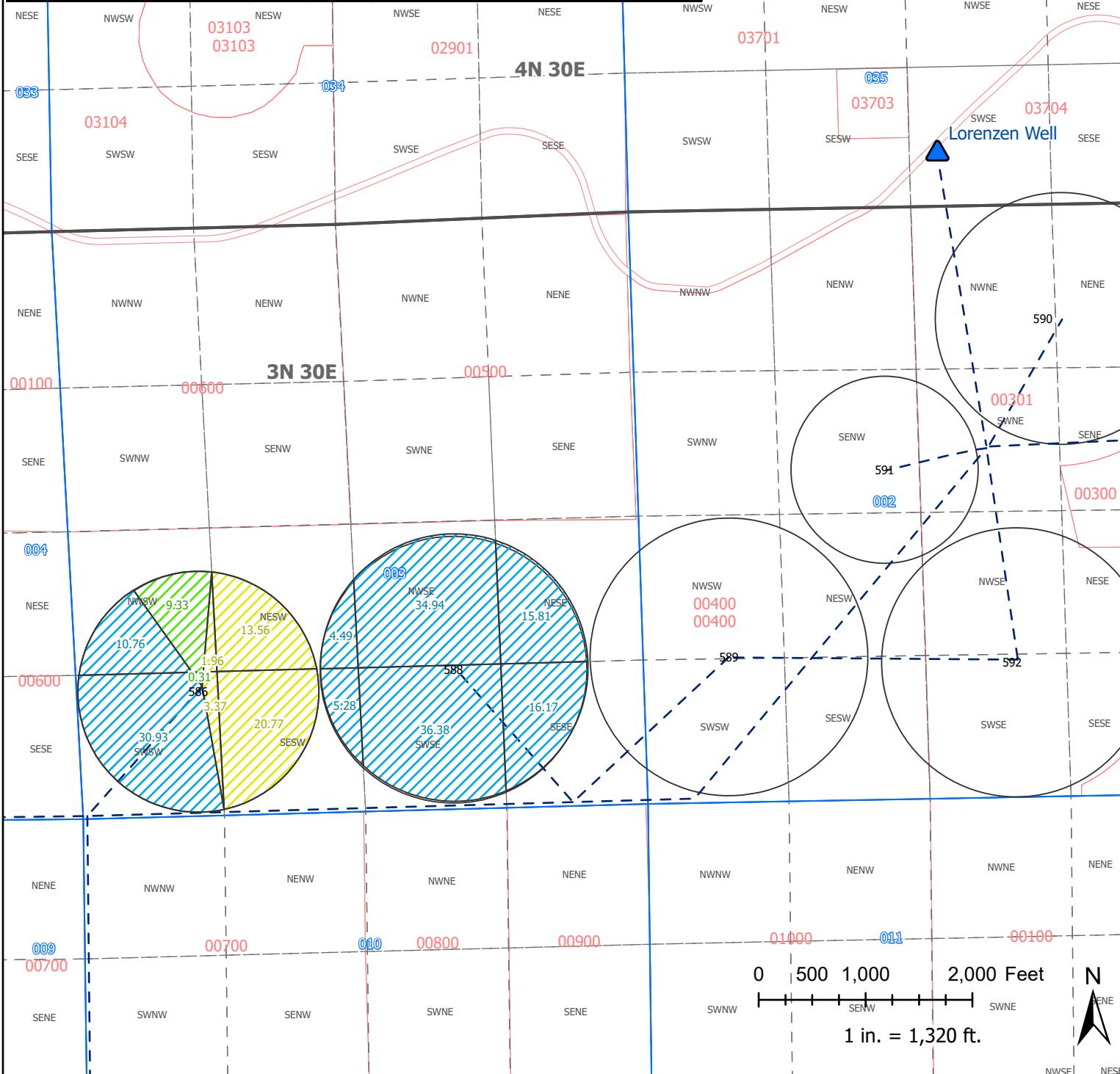
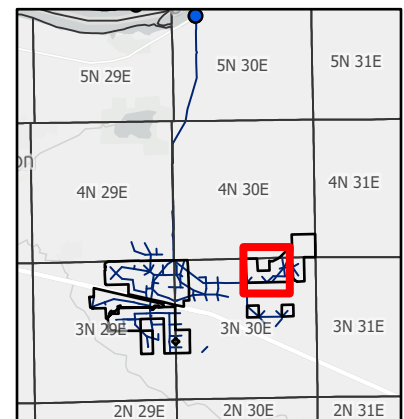
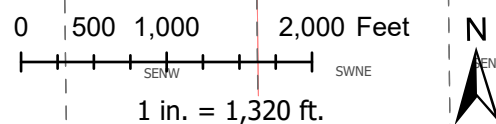


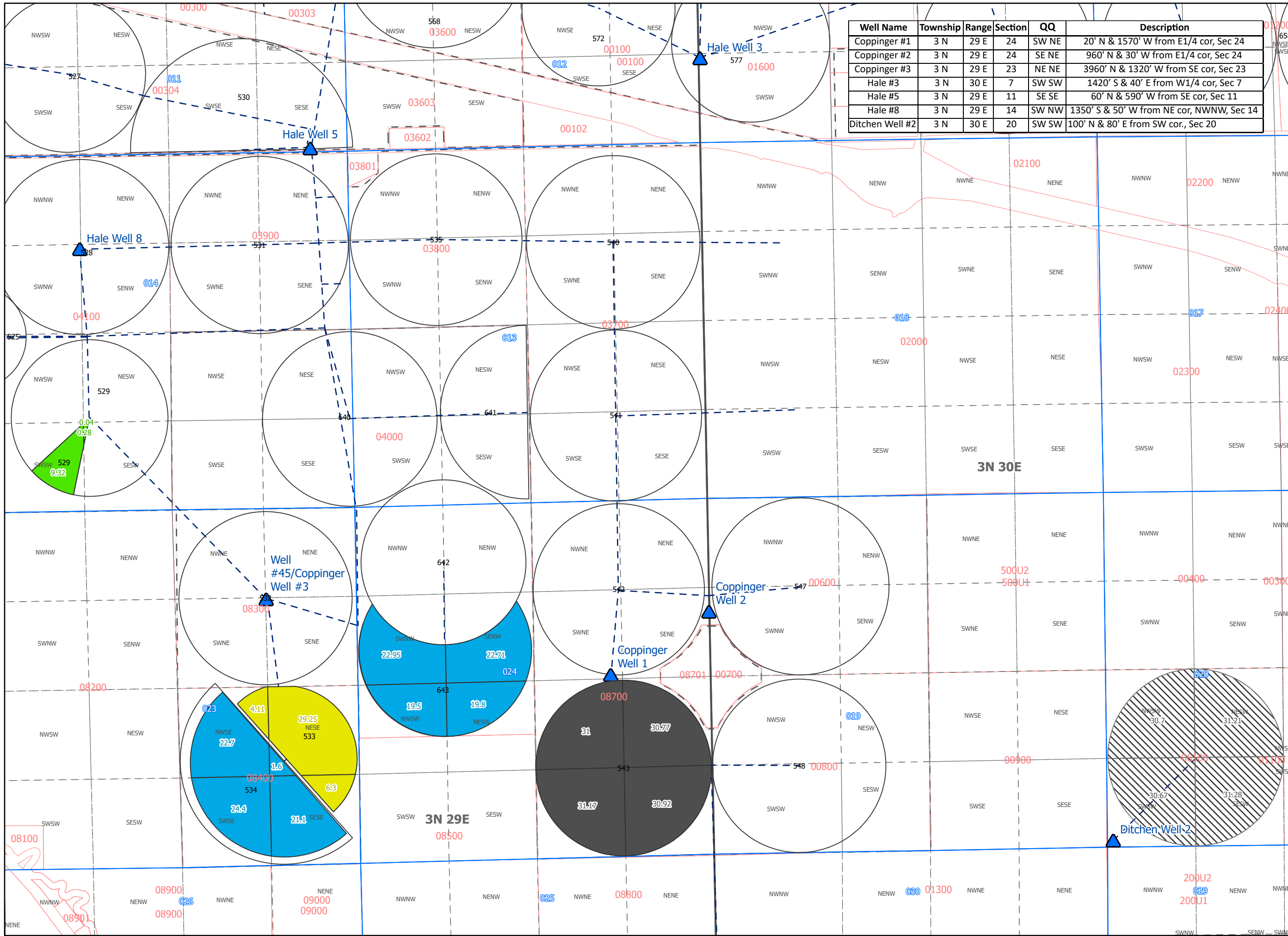
Well Name	Township	Range	Section	QQ	Description
Lorenzen Well	4 N	30 E	35	SW SE	1860' S & 2920' E from W1/4 cor, Sec 35

# Farmland Reserve, Inc. Temporary Transfer - Umatilla County



- Point of Diversion
- Water Transport
- Irrigated Fields
- Township & Range
- Section
- 1/4-1/4
- Umatilla County Parcels
- 87666 "TO" Lands
- 80850 "TO" Lands
- 87667 "TO" Lands

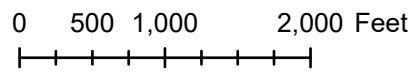




Well Name	Township	Range	Section	QQ	Description
Coppinger #1	3 N	29 E	24	SW NE	20' N & 1570' W from E1/4 cor, Sec 24
Coppinger #2	3 N	29 E	24	SE NE	960' N & 30' W from E1/4 cor, Sec 24
Coppinger #3	3 N	29 E	23	NE NE	3960' N & 1320' W from SE cor, Sec 23
Hale #3	3 N	30 E	7	SW SW	1420' S & 40' E from W1/4 cor, Sec 7
Hale #5	3 N	29 E	11	SE SE	60' N & 590' W from SE cor, Sec 11
Hale #8	3 N	29 E	14	SW NW	1350' S & 50' W from NE cor, NWNW, Sec 14
Ditchen Well #2	3 N	30 E	20	SW SW	100' N & 80' E from SW cor., Sec 20

### Farmland Reserve, Inc. Temporary Transfer - Umatilla County

Property Boundary  
 Township & Range  
 Section  
 1/4-1/4  
 Umatilla County Parcels  
 Irrigated Fields  
 80849 "FROM" Lands  
 80849 "TO" Lands  
 87666 "FROM" Lands



1 in. = 1,320 ft.

