

Temporary Drought Transfer Application for Jani K. McPherson for lands in Klamath County: Township 40S, Range 9E, Willamette Meridian

Existing Place of Use

Lot 10 Section 17, T40S, R9E, WM: 16 acres
 NW 1/4 NW 1/4 Section 17, T40S, R9E, WM: 20 acres
 SW 1/4 NW 1/4 Section 17, T40S, R9E, WM: 30 acres
 SE 1/4 NW 1/4 Section 17, T40S, R9E, WM: 40 acres
 Lot 12 Section 17, T40S, R9E, WM: 16 acres
 Lot 11 Section 17, T40S, R9E, WM: 0.5 acres

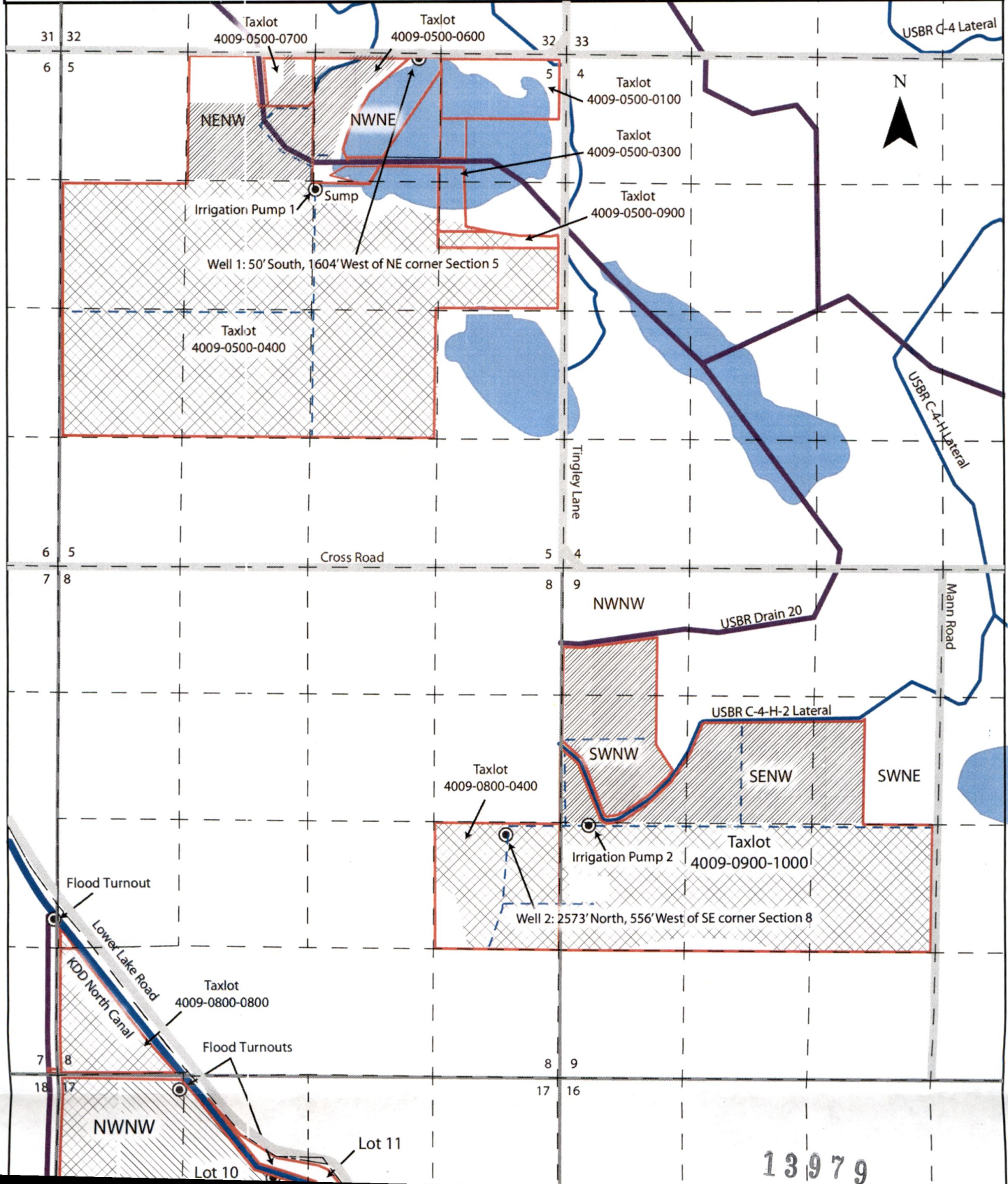
RECEIVED

APR 18 2022

OWRD

Proposed Place of Use

SW 1/4 NW 1/4 Section 9, T40S, R9E, WM: 30 acres
 NW 1/4 NW 1/4 Section 9, T40S, R9E, WM: 10.5 acres
 SE 1/4 NW 1/4 Section 9, T40S, R9E, WM: 31 acres
 SW 1/4 NE 1/4 Section 9, T40S, R9E, WM: 13 acres
 NE 1/4 NW 1/4 Section 9, T40S, R9E, WM: 28 acres
 NW 1/4 NE 1/4 Section 9, T40S, R9E, WM: 10 acres



1997

1998

