

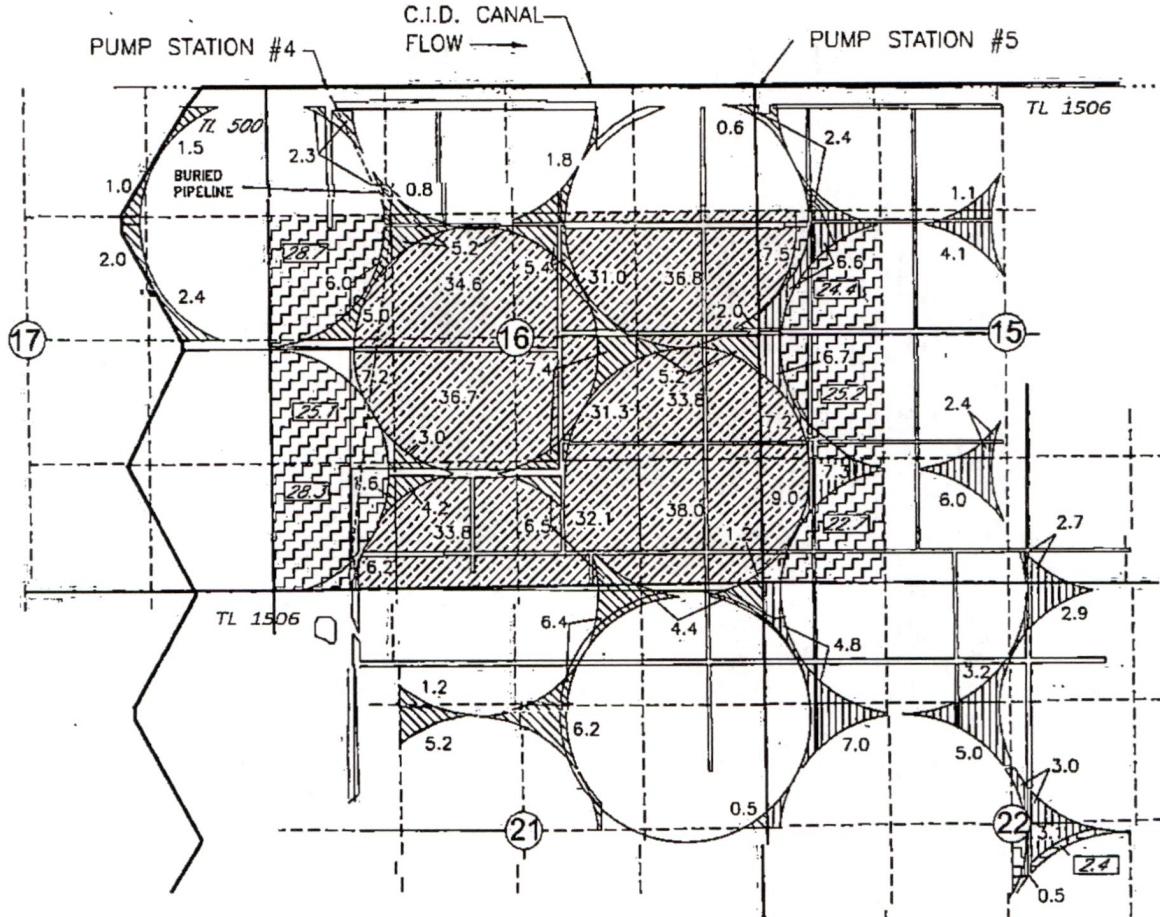
TRANSFER APPLICATION MAP  
 EASTERDAY FARMS DAIRY, LLC & CANYON FARM II, LLC  
 TO  
 SAGE HOLLOW RANCH, LLC  
 PORTIONS OF CERTIFICATES 94871, 94873, 94874  
 T3N, R26E, W.M., MORROW COUNTY

RECEIVED






APR 18 2022

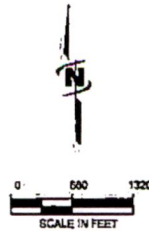
OWRD

SHEET 1 OF 2 " FROM MAP "



LEGEND

-  86.4 AC OF CERT 94873
-  66.4 AC OF CERT 94874
-  350.2 AC OF CERT 94871
-  AC OF CERT 94871 in QTR  
QTR NOT ASSOCIATED WITH  
THIS TRANSFER
-  AC OF CERT 94874 in QTR  
QTR NOT ASSOCIATED WITH  
THIS TRANSFER



13977

Received by OWRD

MAR 05 2020

Salem, OR

~~13388~~

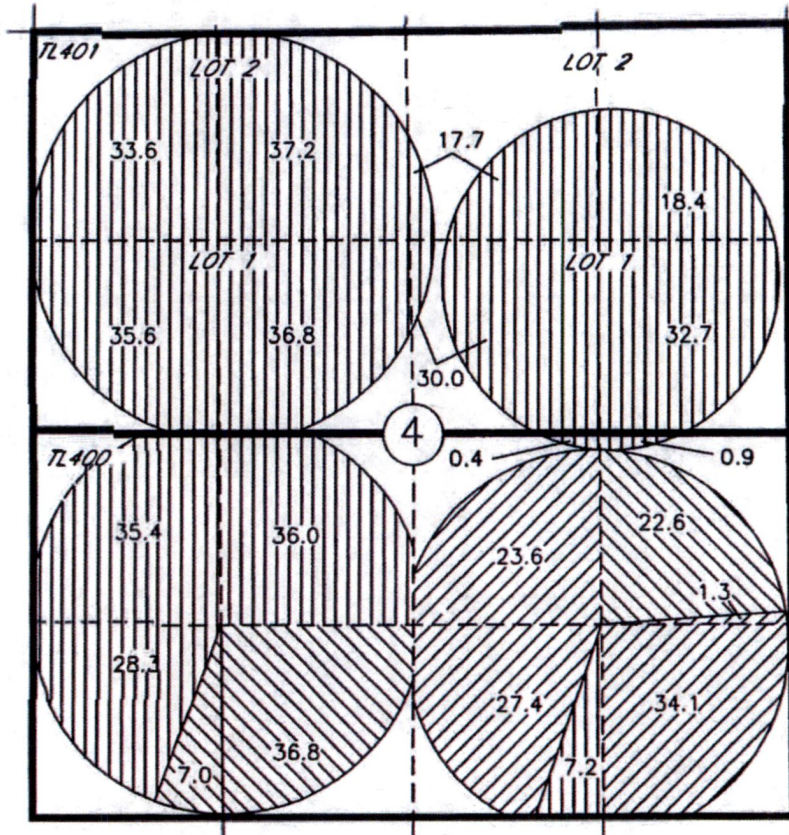
NOTE:  
 THE PURPOSE OF THIS MAP IS TO IDENTIFY THE APPROXIMATE LOCATION OF THE WATER RIGHT. IT IS NOT INTENDED  
 TO PROVIDE INFORMATION RELATIVE TO THE LOCATION OF PROPERTY OWNERSHIP BOUNDARY LINES, PIPE LOCATIONS  
 AND SIZES WHERE SHOWN WERE PROVIDED BY FARM OPERATIONAL PERSONNEL AND ARE APPROXIMATE LOCATIONS AND  
 SIZES.

**TRANSFER APPLICATION MAP**  
**EASTERDAY FARMS DAIRY, LLC & CANYON FARM II, LLC**  
**TO**  
**SAGE HOLLOW RANCH, LLC**  
**PORTIONS OF CERTIFICATES 94871, 94873, 94874**  
**T3N, R26E, W.M., MORROW COUNTY**  
**SHEET 2 OF 2 TO MAP "**




RECEIVED

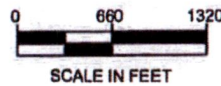
APR 1.8 2022

OWRD



**LEGEND**

-  350.2 AC CERT 94871
-  86.4 AC CERT 94873
-  66.4 AC CERT 94874



P.O.D. COLUMBIA RIVER  
 LOCATED IN LOT 7, NE1/4 NW1/4,  
 SEC 2, T4N, R25E, W.M.; 150 FT  
 SOUTH AND 2990 FT WEST FROM  
 THE NE COR OF SEC 2.

Received by OWRD

MAR 05 2020

Salem, OR

NOTE:  
 THE PURPOSE OF THIS MAP IS TO IDENTIFY THE APPROXIMATE LOCATION OF THE WATER RIGHT. IT IS NOT INTENDED  
 TO PROVIDE INFORMATION RELATIVE TO THE LOCATION OF PROPERTY OWNERSHIP BOUNDARY LINES. PIPE LOCATIONS  
 AND SIZES WHERE SHOWN WERE PROVIDED BY FARM OPERATIONAL PERSONNEL AND ARE APPROXIMATE LOCATIONS AND  
 SIZES.

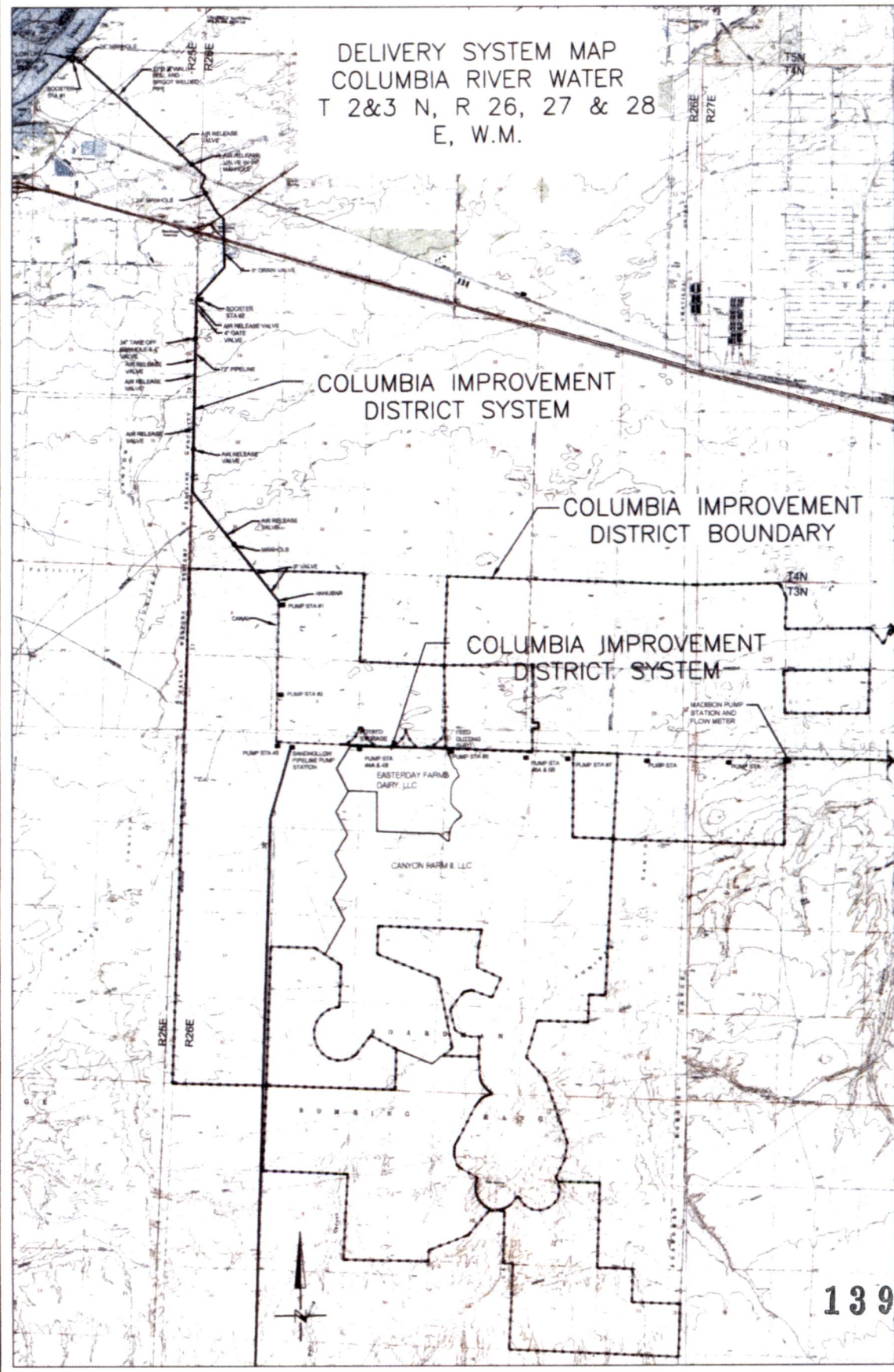


RECEIVED

APR 18 2022

OWRD

# DELIVERY SYSTEM MAP COLUMBIA RIVER WATER T 2&3 N, R 26, 27 & 28 E, W.M.



APR 05 2020  
OWRD

13977

13388