

# 2012 WESTLAND IRRIGATION DISTRICT

E-RECEIVED

02/16/2022

OWRD



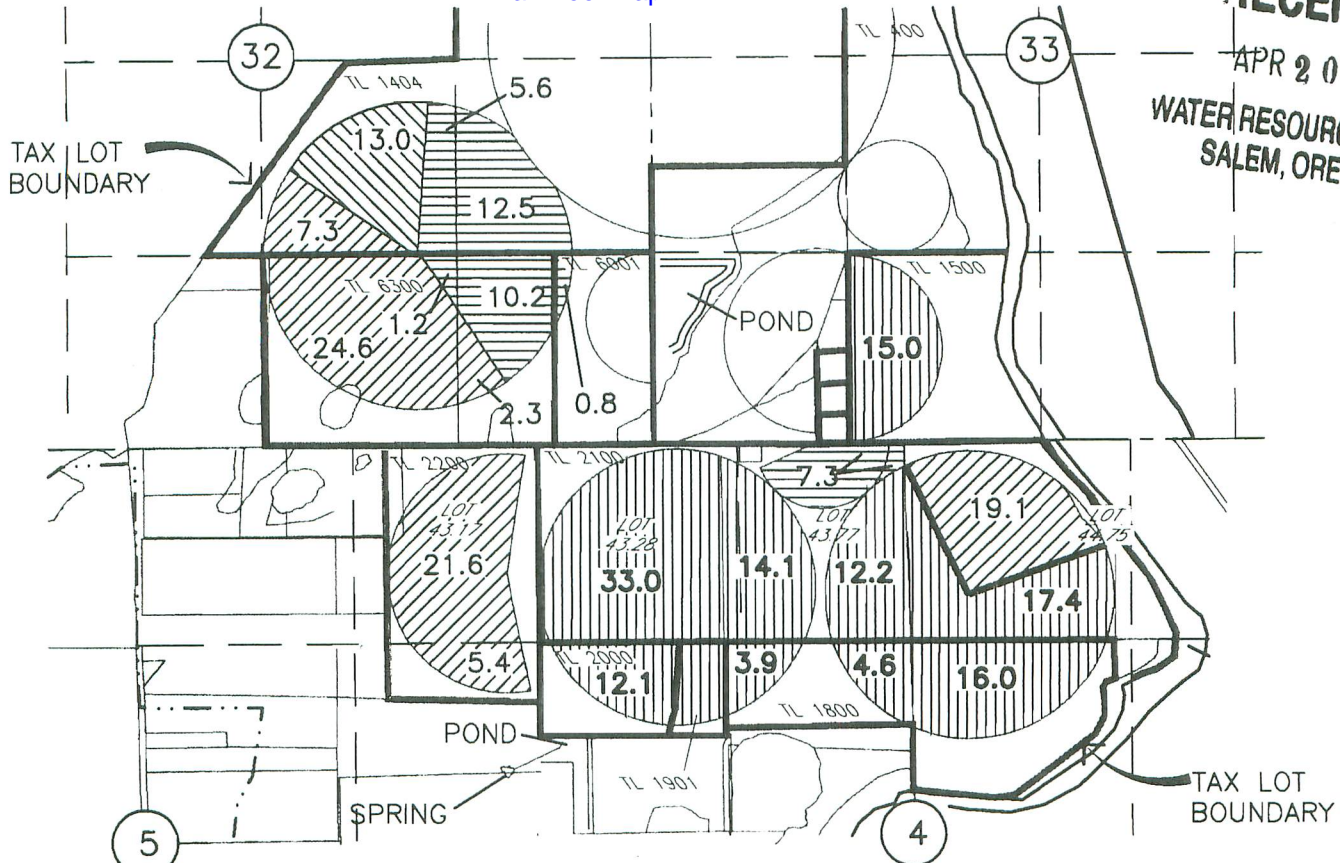
Engineers • Surveyors • Planners  
 3100 CLEARWATER AVE. STE 201  
 KENNEWICK WA 98501-1004

L. WADEKAMPER  
 T4N & T5N, R28E W.M.  
 Final Proof Map

RECEIVED

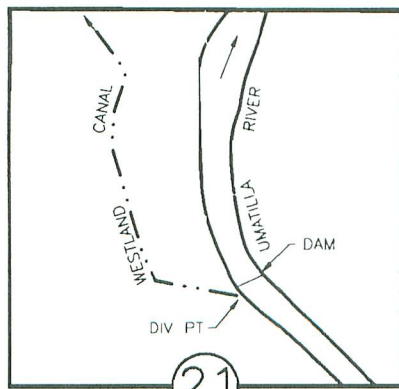
APR 20 2012

WATER RESOURCES DEPT  
 SALEM, OREGON



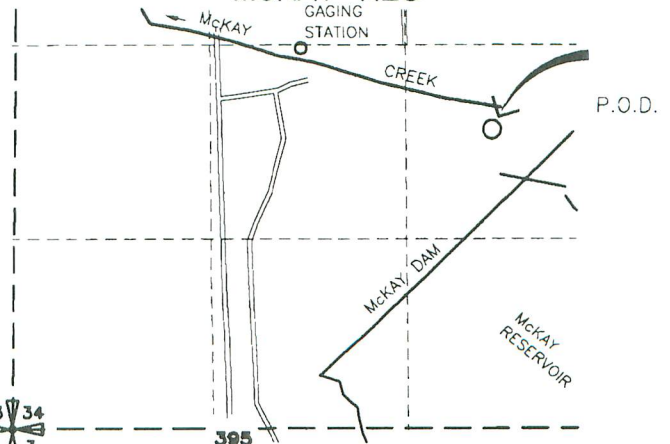
- |  |         |                                                        |  |          |                                                 |
|--|---------|--------------------------------------------------------|--|----------|-------------------------------------------------|
|  | 80.3 Ac | T-9311 CERT 76717 (1907)<br>AND PERMIT 7400 CERT 79439 |  | 128.3 Ac | CERT 76717 (1907) AND<br>PERMIT 7400 CERT 79439 |
|  | 13.0 Ac | T-9311 PERMIT 27583 CERT<br>76799 (1961)               |  | 37.6 Ac  | PERMIT 27583 CERT 76799<br>(1961)               |

WID

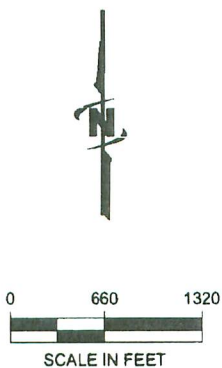


DIV PT LCT N.76°45'56"E. 2913.19'  
 FROM W.1/4 COR. SEC 21  
 T.3N., R.29E., W.M.

McKAY RES



P.O.D. McKay Reservoir NW 1/4 SE  
 1/4 SEC 34  
 T.2N., R.32E., W.M.



NOTE:  
 THE PURPOSE OF THIS MAP IS TO IDENTIFY THE APPROXIMATE LOCATION OF THE WATER RIGHT. IT IS NOT INTENDED  
 TO PROVIDE INFORMATION RELATIVE TO THE LOCATION OF PROPERTY OWNERSHIP BOUNDARY LINES. PIPE LOCATIONS  
 AND SIZES WHERE SHOWN WERE PROVIDED BY FARM OPERATIONAL PERSONNEL AND ARE APPROXIMATE LOCATIONS  
 AND SIZES.

T 11408