

OWNER: McEST
 T 7 R 40 SECT. 30

■ - 1958 suppl w/ 1958 primary
 □ - 1958 suppl. w/ 1905/1910 primary

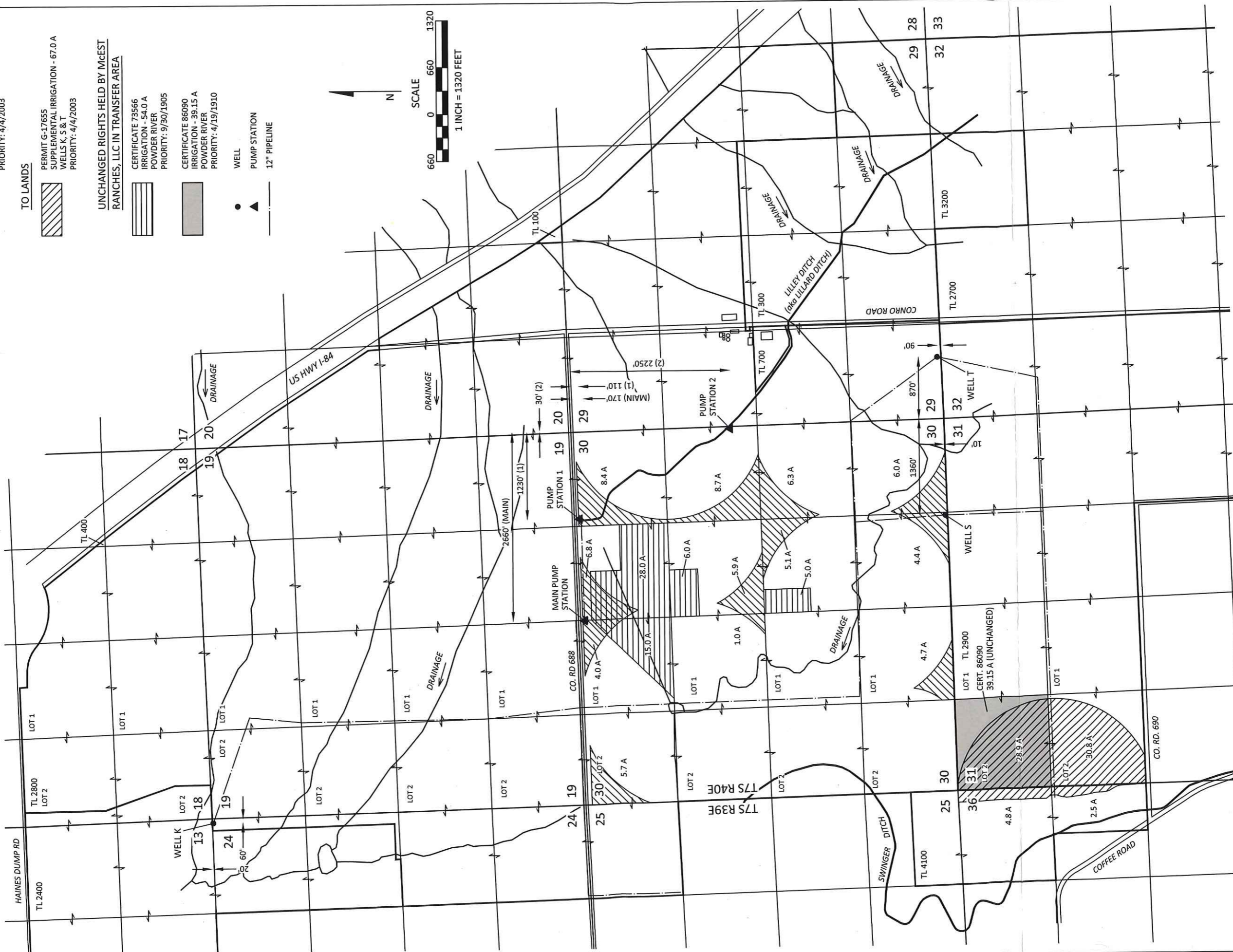
				NORTH											
1958 SUPP.	1982 SUPP.	PRIM.	CERT. #	1958 SUPP.	1982 SUPP.	PRIM.	CERT. #	1958 SUPP.	1982 SUPP.	PRIM.	CERT. #	1958 SUPP.	1982 SUPP.	PRIM.	CERT. #
36.7	0	36.7	1958 52008	15	0	15	1905 4307	28	0	28	1905 4307	40.3	0	40.3	1958 52008
				22.6	0	22.6	1958 52008	9.9	0	9.9	1958 52008				
NW/NW				NE/NW				NW/NE				NE/NE			
38.4	0	38.7	1910 1633	46.7	0	40.7	1958 52008	6	0	6	1905 4307	39.3	0	39.3	1958 52008
								36	0	36	1958 52008				
SW/NW				SE/NW				SW/NE				SE/NE			
25.6	0	25.6	1910 1633	40.4	0	40.4	1958 52008	5	0	5	1905 4307	38.8	0	38.8	1958 52008
								37.4	0	37.4	1958 52008				
NW/SW				NE/SW				NW/SE				NE/SE			
39	0	39	1910 1633	39.6	0	39.6	1958 52008	42.7	0	42.7	1958 52008	39.5	0	39.5	1958 52008
SW/SW				SE/SW				SW/SE				SE/SE			

Map of Baker Valley Irrigation District Water Rights
 Section 30, T7S, R40E, WM

Sections 24 & 36, T7S, R39E and Sections 19, 29, 30, 31 & 32, T7S, R40E, W.M., Baker County

TEMPORARY TRANSFER MAP
 Certificate 96200 (Certificate Pending)
 McEst Ranches, LLC

EXPLANATION	FROM LANDS	TO LANDS
PERMIT G-17655 SUPPLEMENTAL IRRIGATION - 67.0 A WELLS K, S & T PRIORITY: 4/4/2003		PERMIT G-17655 SUPPLEMENTAL IRRIGATION - 67.0 A WELLS K, S & T PRIORITY: 4/4/2003
UNCHANGED RIGHTS HELD BY McEST RANCHES, LLC IN TRANSFER AREA		CERTIFICATE 73566 IRRIGATION - 54.0 A POWDER RIVER PRIORITY: 9/30/1905
		CERTIFICATE 86090 IRRIGATION - 39.15 A POWDER RIVER PRIORITY: 4/19/1910
		WELL
		PUMP STATION
		12" PIPELINE



KPFF 1700014.82

SKOOKUM
 WATER ASSOCIATES INC

1626 VICTORIAN WAY
 EUGENE, OR 97401
 (503) 319-8926

14016

NOTES:

1. Not all authorized acres of the water rights are shown.
2. From and To Lands have Baker Valley Irrigation District surface-water rights under certificates 73406, 73605, 73610 & 73999.

RECEIVED

MAY 27 2022

OWRD

May 4, 2022

This map is not intended to provide legal dimensions or locations of property ownership lines

Figure 1

OWNER: McEST
T 7 R 40 SECT. 31

				NORTH											
1958 SUPP.	1982 SUPP.	PRIM.	CERT. #	1958 SUPP.	1982 SUPP.	PRIM.	CERT. #	1958 SUPP.	1982 SUPP.	PRIM.	CERT. #	1958 SUPP.	1982 SUPP.	PRIM.	CERT. #
39.1	0	39.1	1910 1633	39.2	0	40	1910 1633	42.5	0	42.5	1958 52008	39.9	0	39.9	1958 52008
.9	0	.9	1958 52008												
NW/NW				NE/NW				NW/NE				NE/NE			
36.8	0	36.8	1910 1633	37.2	0	37.2	1910 1633	41.4	0	41.4	1958 52008	40.2	0	40.2	1958 52008
SW/NW				SE/NW				SW/NE				SE/NE			
The DLX				The DLX				The DLX				40.6 0 40.6 1958 52008			
NW/SW				NE/SW				NW/SE				NE/SE			
SW/SW				SE/SW				SW/SE				SE/SE 1958 52008			
The DLX				The DLX				The DLX				0 23.5 23.5 1982 73999			
				COFFEY ROAD								14016			
												SOUTH			

Map of Baker Valley Irrigation District Water Rights
 Section 31, T7S, R40E, WM

OWNER: MC EST
T 7 R 39 SECT. 36

NORTH

1958 SUPP.	1982 SUPP.	PRIM.	CERT. #	1958 SUPP.	1982 SUPP.	PRIM.	CERT. #	1958 SUPP.	1982 SUPP.	PRIM.	CERT. #	1958 SUPP.	1982 SUPP.	PRIM.	CERT. #	
								0	1.1	1.1	1982 73499	0	26.8	26.8	1919 3429	
NW/NW				NE/NW				NW/NE				NE/NE				
SW/NW				SE/NW				SW/NE				SE/NE	0	9.2	9.2	1982 73499
36																
																THE DLX 5 AC 1982
NW/SW				NE/SW				NW/SE				NE/SE				
SW/SW				SE/SW				SW/SE				SE/SE				

SOUTH

Map of Baker Valley Irrigation District Water Rights
 Section 36, T7S, R39E, WM