




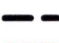

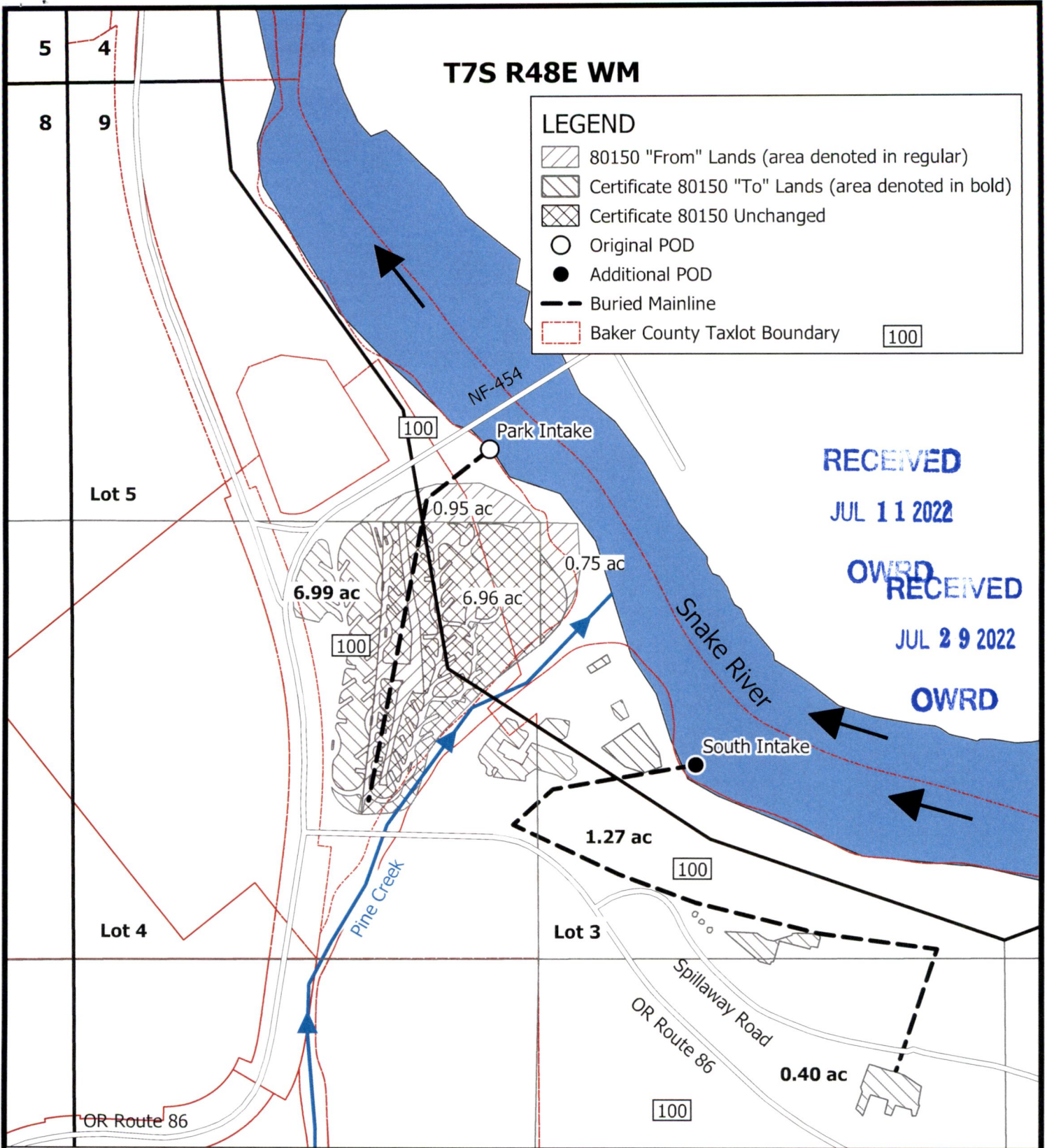


T7S R48E WM

LEGEND

-  80150 "From" Lands (area denoted in regular)
-  Certificate 80150 "To" Lands (area denoted in bold)
-  Certificate 80150 Unchanged
-  Original POD
-  Additional POD
-  Buried Mainline
-  Baker County Taxlot Boundary



RECEIVED
JUL 11 2022
OWRD
RECEIVED
JUL 29 2022
OWRD

Garvin
HydroGeo
LLC

Certificate 80150 Transfer Application Map Change in POU and Additional POD

DRAFT



Prepared on behalf of Idaho Power

1 inch = 400 feet

Note:

This map is not intended to provide legal dimensions or locations of property ownership lines.

Park Intake: 1,117 feet S and 1,179 feet E from the NW corner of Section 9

South Intake: 2,025 feet S and 1,842 feet E from the NW corner of Section 9

Drawn by: Paul F. Garvin, RG, CWRE
Date: 5/12/22

JUL 29 2022

RECEIVED








JUL 11 2022

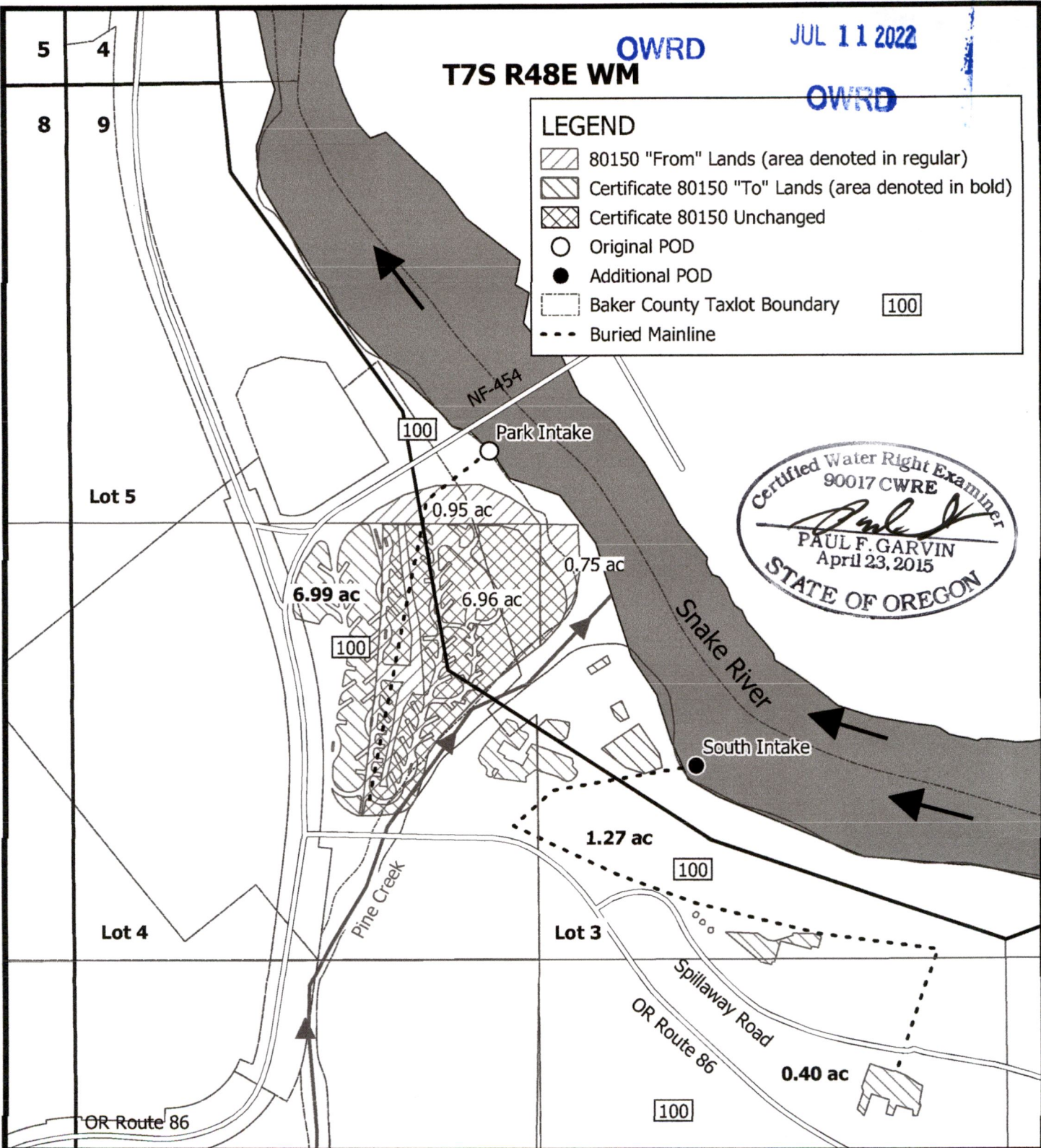
OWRD

OWRD

T7S R48E WM

LEGEND

-  80150 "From" Lands (area denoted in regular)
-  Certificate 80150 "To" Lands (area denoted in bold)
-  Certificate 80150 Unchanged
-  Original POD
-  Additional POD
-  Baker County Taxlot Boundary 100
-  Buried Mainline



Garvin HydroGeo LLC

Certificate 80150 Transfer Application Map Change in POU and Additional POD



Prepared on behalf of Idaho Power
1 inch = 400 feet

Note:

This map is not intended to provide legal dimensions or locations of property ownership lines.

Park Intake: 1,117 feet S and 1,179 feet E from the NW corner of Section 9

South Intake: 2,025 feet S and 1,842 feet E from the NW corner of Section 9

Drawn by: Paul F. Garvin, RG, CWRE
Date: 6/17/22

Supporting Documentation



RECEIVED
JUL 11 2022
OWRD

RECEIVED
JUL 29 2022
OWRD

Cert 80150 POU/APOD Transfer Evidence Affidavit - Supporting documentation

2015 Aerial Imagery shows the irrigated areas as referenced on the affidavit.

Legend



RECEIVED

JUL 29 2022

OWRD