

RECEIVED

AUG 11 2022

OWRD

RECEIVED

JUL 28 2022

OWRD

DESCHUTES COUNTY, OR
T22S R10E, WM

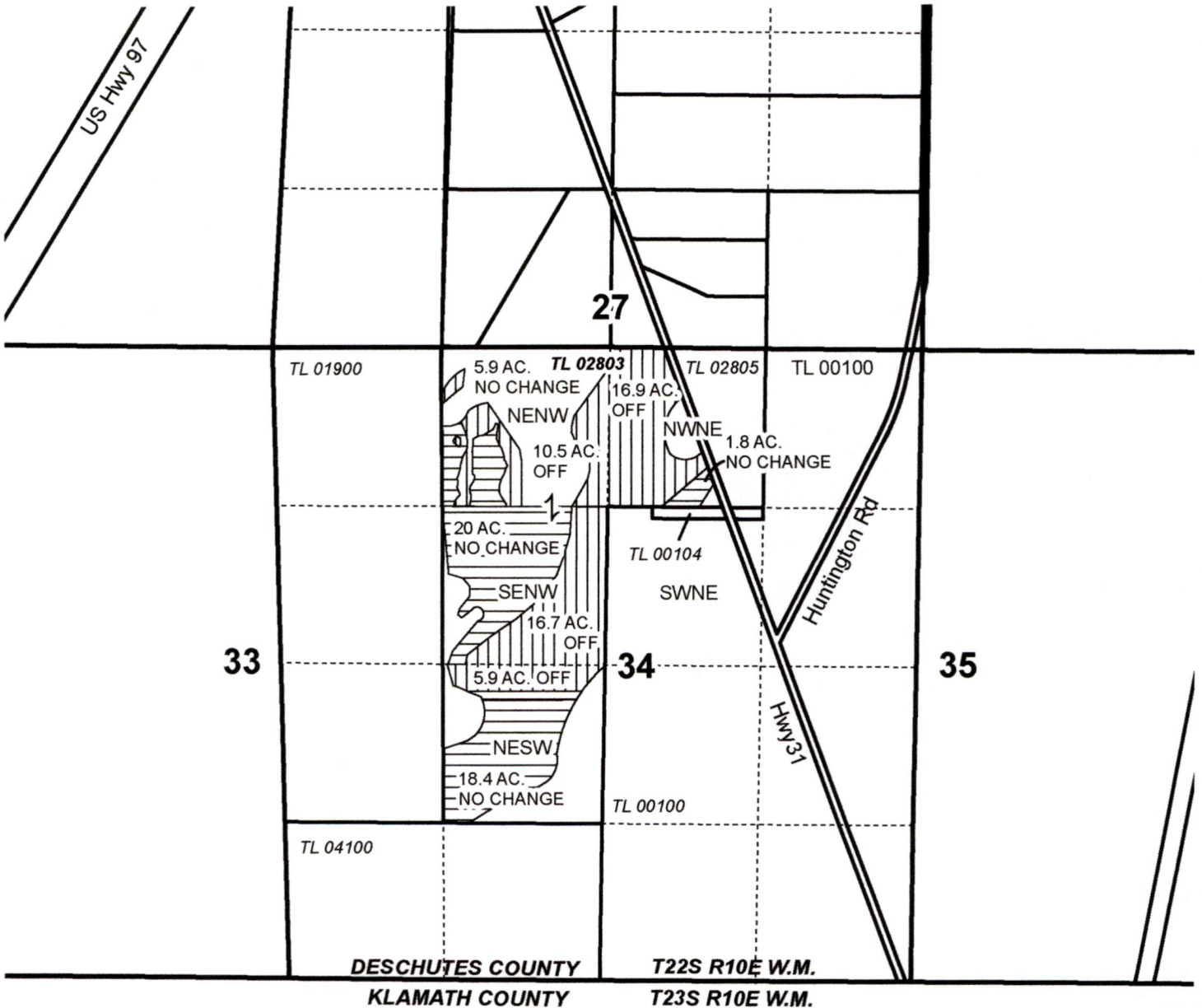


0 1,320 Feet
1" = 1320'



Legend:

- POU PER QQ NO CHANGE
- POU PER QQ "OFF"
- Section
- Tax Lot
- Quarter Quarter



TRANSFER "OFF" MAP
Pinnacle Utilities, LLC

This map is not intended to provide legal dimensions or locations of property ownership lines.

WATER RIGHT SERVICES, LLC

PO BOX 1830, BEND, OR 97709

WWW.OREGONWATER.US 541-389-2837

Date: 7/25/2022

A Portion of C-95746

johnshort@usa.com

CCB # 197121

RECEIVED

AUG 11 2022

OWRD

RECEIVED

JUL 28 2022

OWRD

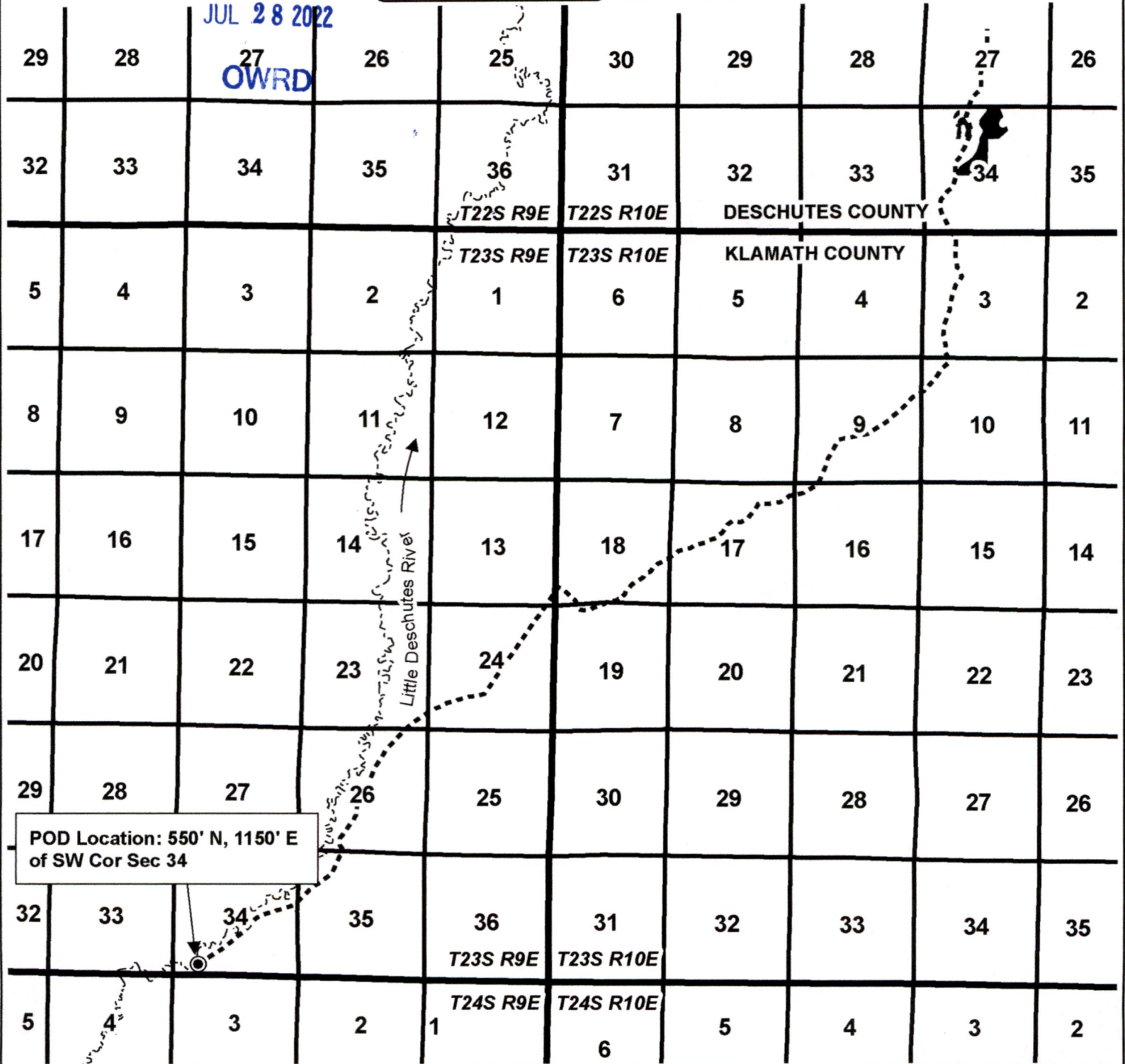
● POD
 - - - - Canal
 - - - - River
 ■ Place of Use
 □ Township
 □ Section



0 6,000 Feet
1" = 6000'



**T22S R10E, WM,
DESCHUTES COUNTY, OR &
T23S R10E & T23S R9E, WM
KLAMATH COUNTY, OR**



POD Location: 550' N, 1150' E
of SW Cor Sec 34

**TRANSFER "OFF" MAP
Pinnacle Utilities, LLC**

This map is not intended to provide legal dimensions or locations of property ownership lines.

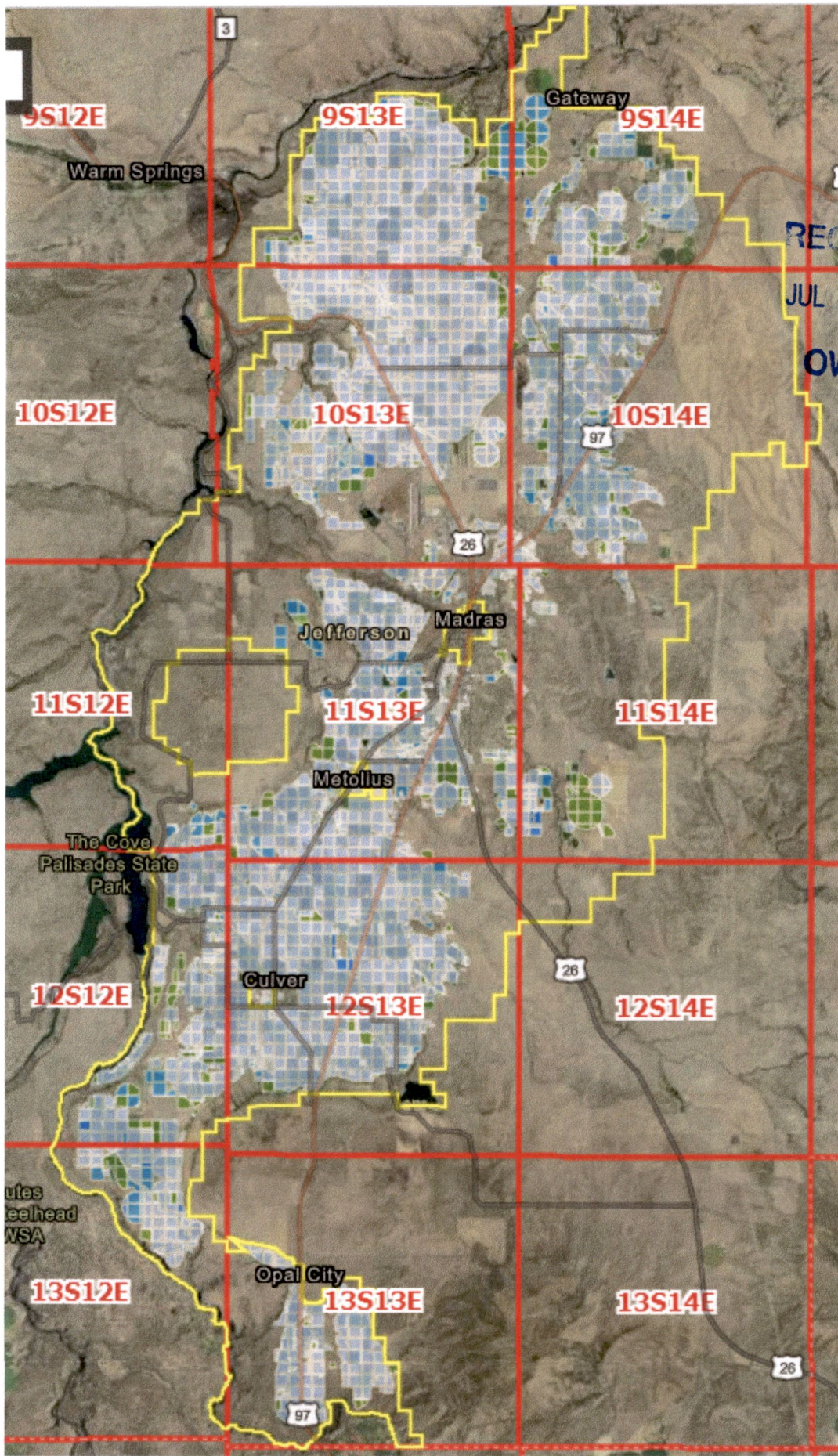
WATER RIGHT SERVICES, LLC

PO BOX 1830, BEND, OR 97709

WWW.OREGONWATER.US 541-389-2837

johnshort@usa.com

CCB # 197121



RECEIVED

AUG 11 2022

OWRD

RECEIVED

JUL 28 2022

OWRD

"ON" MAP - NORTH UNIT IRRIGATION DISTRICT

EVIDENCE OF USE

2017 GOOGLE EARTH IMAGERY

Legend

28

27

26

31

T22S R10E

S Huntington Rd

33

34

35

RECEIVED
JUL 28 2022
OWRD

RECEIVED
AUG 11 2022
OWRD

Survey

Google Earth



2000 ft