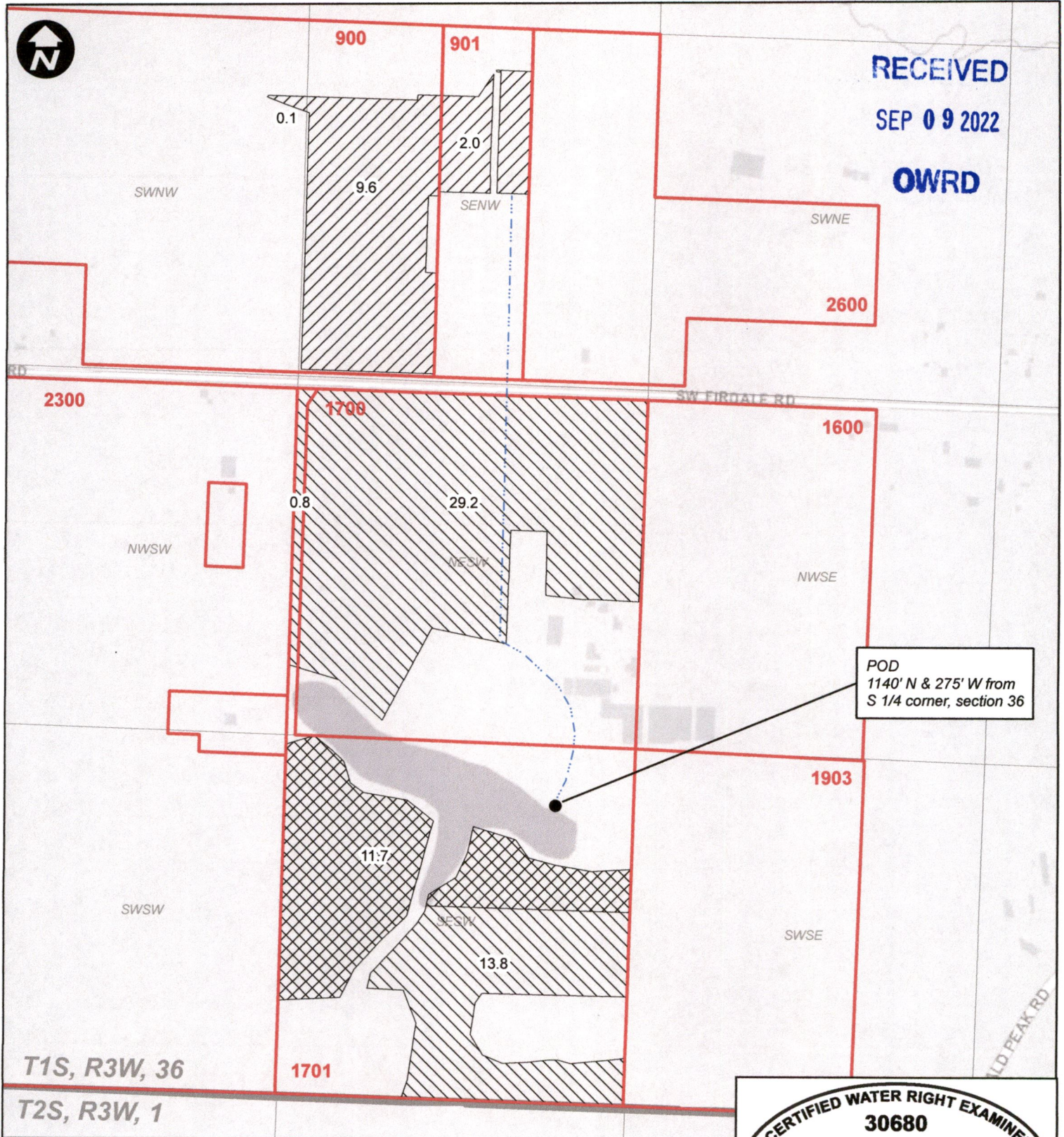


# Transfer Application - Cert. 76061 - Twigg Farms



RECEIVED  
SEP 09 2022  
OWRD

POD  
1140' N & 275' W from  
S 1/4 corner, section 36

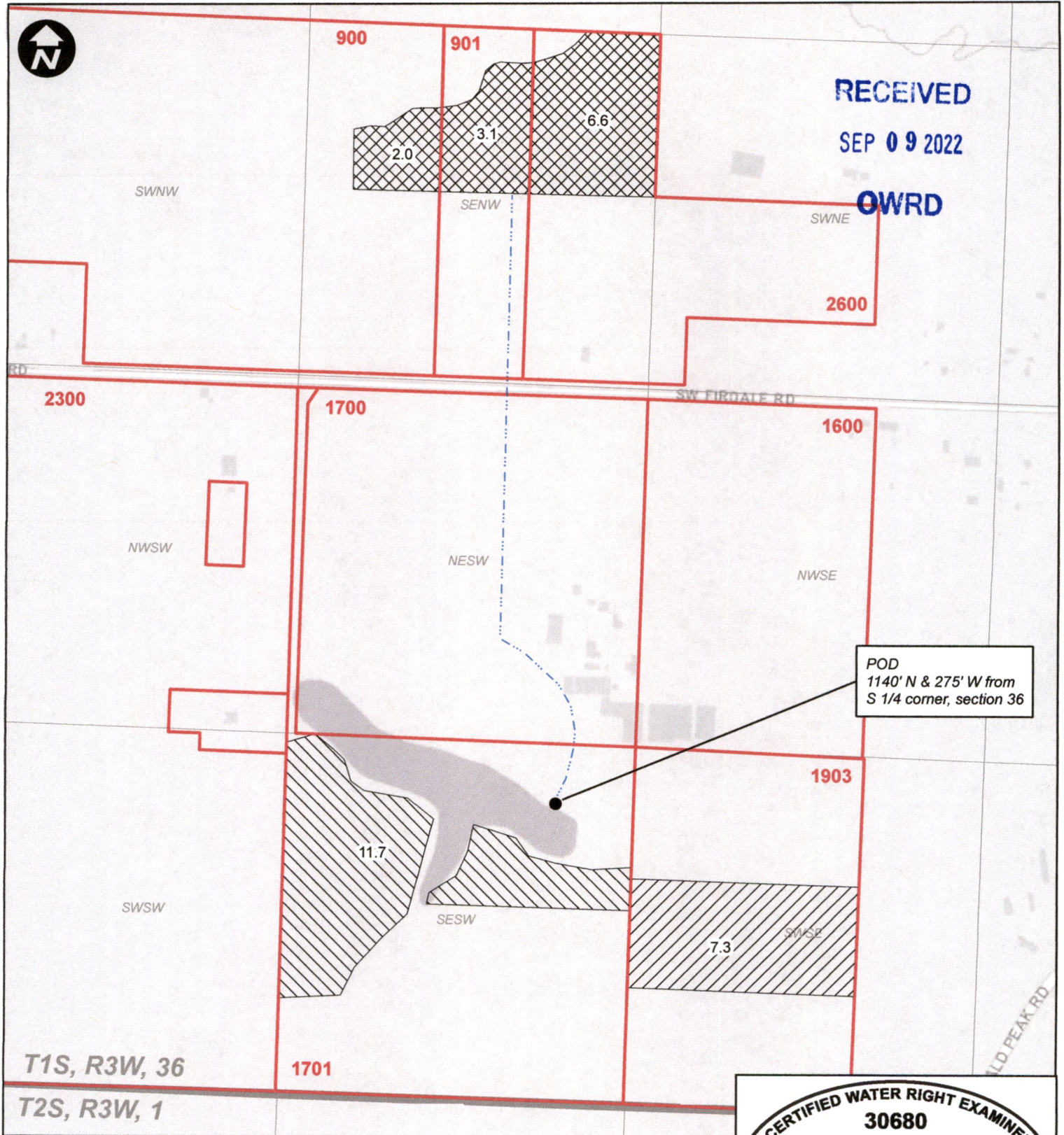
CERTIFIED WATER RIGHT EXAMINER  
30680  
*William E. McGill*  
WILLIAM E. MCGILL  
MAY 3, 2011  
STATE OF OREGON  
EXPIRES: 12-31-2022

## Legend

-  Cert. 76061 From
-  Cert. 76061 No Change
-  Tax Lot
-  Cert. 76061 To
-  Mainline




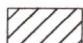

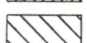
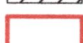
# Transfer Application - Cert. 86736 - Twigg Farms

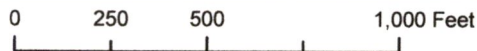


POD  
1140' N & 275' W from  
S 1/4 corner, section 36

CERTIFIED WATER RIGHT EXAMINER  
30680  
*William E. McGill*  
WILLIAM E. MCGILL  
MAY 3, 2011  
STATE OF OREGON  
EXPIRES: 12-31-2022

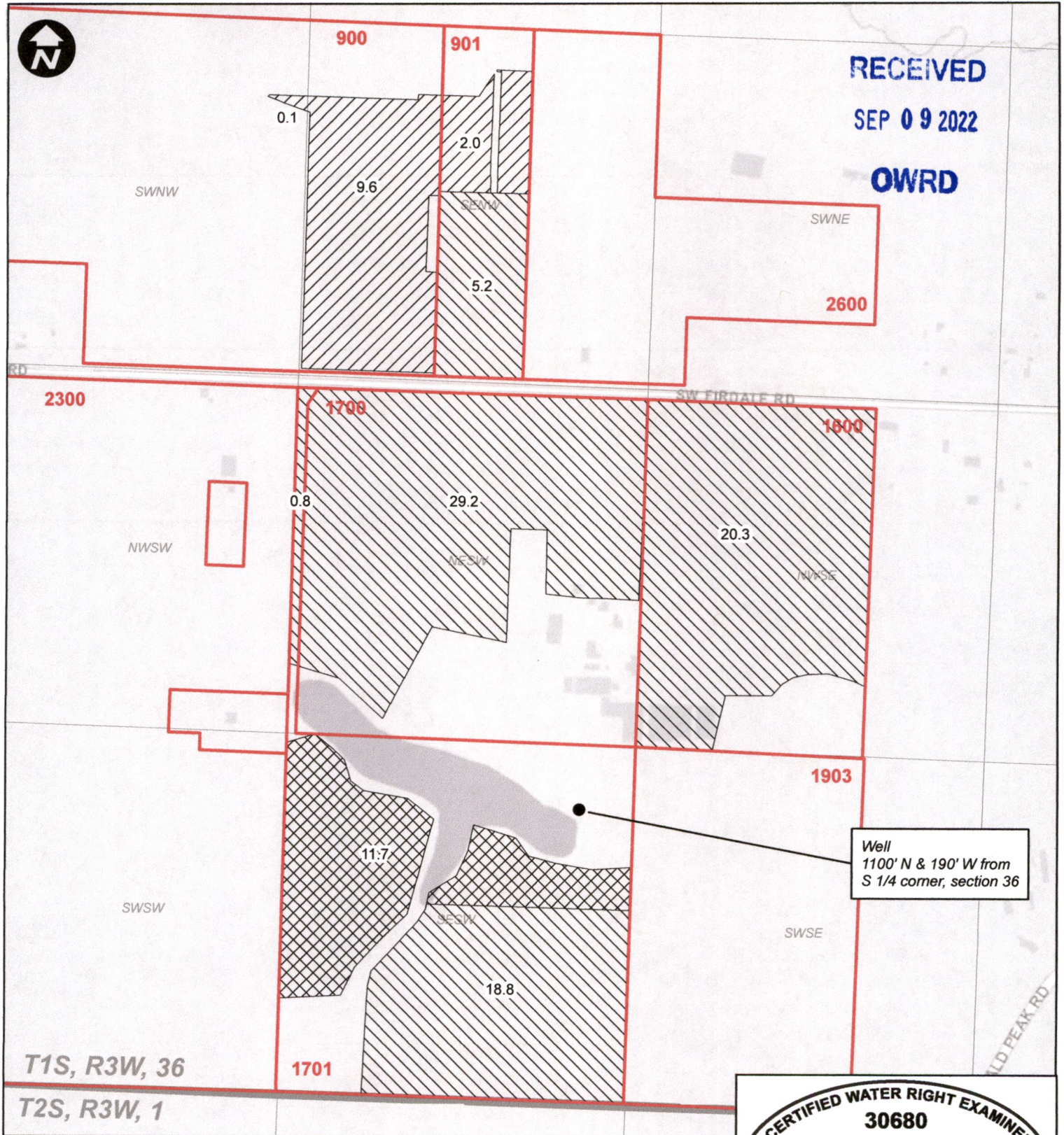
## Legend

-  Cert. 86736 From
-  Cert. 86736 No Change
-  Mainline
-  Cert. 86736 To
-  Tax Lot



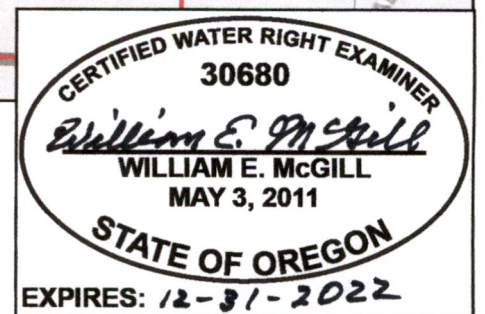


# Transfer Application - Cert. 87026 - Twigg Farms

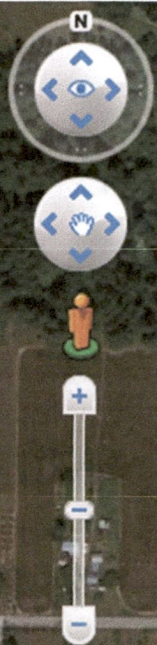


## Legend

-  Cert. 87026 From
-  Cert. 87026 No Change
-  Cert. 87026 To
-  Tax Lot







SW Firdale Rd

RECEIVED  
SEP 09 2022  
OWRD

Google Earth