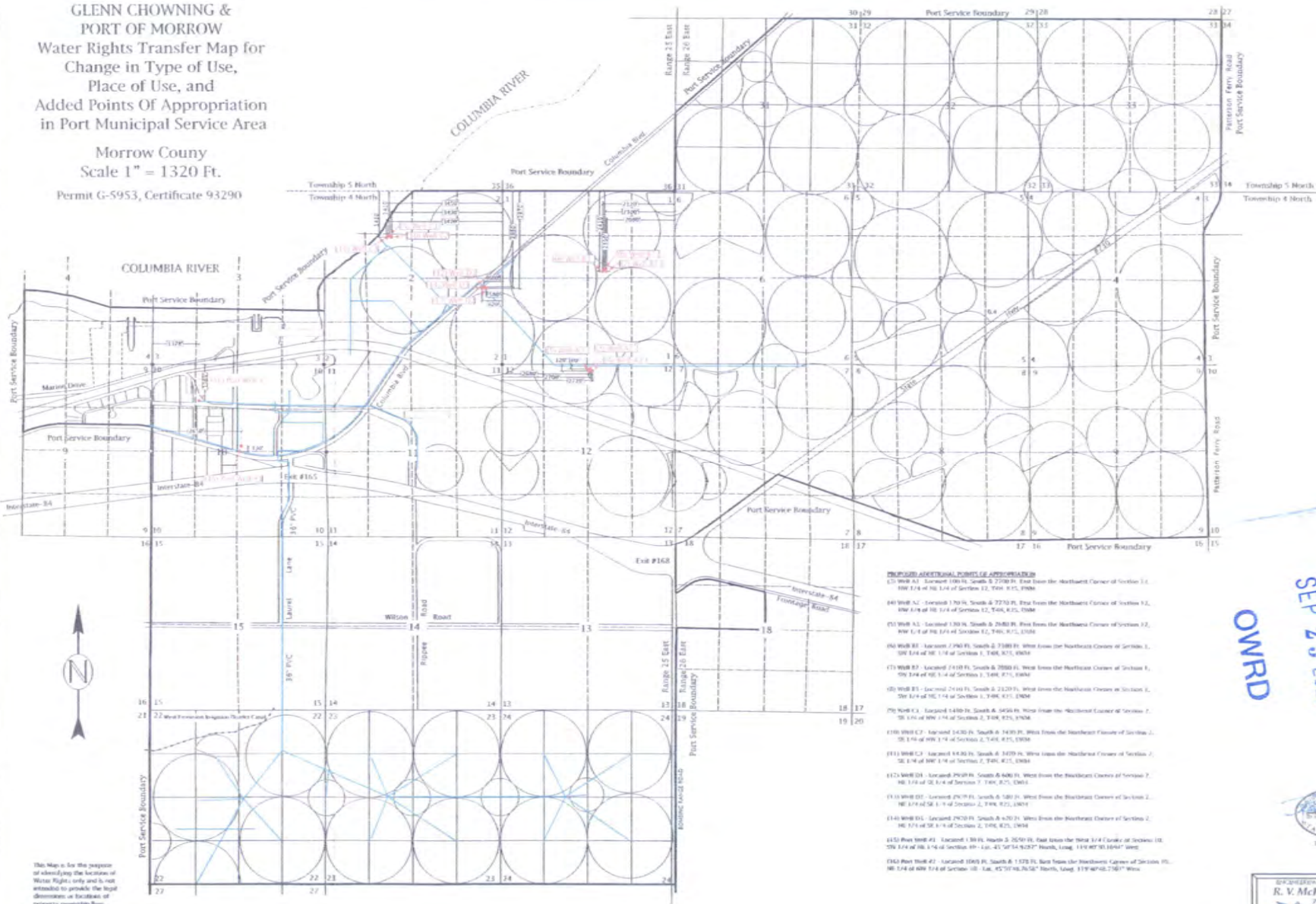


GLENN CHOWNING &
PORT OF MORROW
Water Rights Transfer Map for
Change in Type of Use,
Place of Use, and
Added Points Of Appropriation
in Port Municipal Service Area

Morrow County
Scale 1" = 1320 Ft.
Permit G-5953, Certificate 93290



- PROPOSED ADDITIONAL POINTS OF APPROPRIATION**
- (1) WBR #1 - Located 100 ft. South of 2700 ft. East from the Northeast Corner of Section 1, SW 1/4 of NE 1/4 of Section 12, T4N, R1E, W8W
 - (2) WBR #2 - Located 170 ft. South of 2770 ft. East from the Northeast Corner of Section 12, SW 1/4 of NE 1/4 of Section 12, T4N, R1E, W8W
 - (3) WBR #3 - Located 130 ft. South of 2800 ft. East from the Northeast Corner of Section 12, SW 1/4 of NE 1/4 of Section 12, T4N, R1E, W8W
 - (4) WBR #4 - Located 270 ft. South of 2880 ft. West from the Northeast Corner of Section 1, SW 1/4 of NE 1/4 of Section 1, T4N, R1E, W8W
 - (5) WBR #5 - Located 110 ft. South of 2880 ft. West from the Northeast Corner of Section 1, SW 1/4 of NE 1/4 of Section 1, T4N, R1E, W8W
 - (6) WBR #6 - Located 240 ft. South of 2820 ft. West from the Northeast Corner of Section 1, SW 1/4 of NE 1/4 of Section 1, T4N, R1E, W8W
 - (7) WBR #7 - Located 140 ft. South of 2820 ft. West from the Northeast Corner of Section 1, SW 1/4 of NE 1/4 of Section 1, T4N, R1E, W8W
 - (8) WBR #8 - Located 140 ft. South of 2820 ft. West from the Northeast Corner of Section 1, SW 1/4 of NE 1/4 of Section 1, T4N, R1E, W8W
 - (9) WBR #9 - Located 140 ft. South of 2820 ft. West from the Northeast Corner of Section 1, SW 1/4 of NE 1/4 of Section 1, T4N, R1E, W8W
 - (10) WBR #10 - Located 140 ft. South of 2820 ft. West from the Northeast Corner of Section 1, SW 1/4 of NE 1/4 of Section 1, T4N, R1E, W8W
 - (11) WBR #11 - Located 140 ft. South of 2820 ft. West from the Northeast Corner of Section 1, SW 1/4 of NE 1/4 of Section 1, T4N, R1E, W8W
 - (12) WBR #12 - Located 140 ft. South of 2820 ft. West from the Northeast Corner of Section 1, SW 1/4 of NE 1/4 of Section 1, T4N, R1E, W8W
 - (13) WBR #13 - Located 140 ft. South of 2820 ft. West from the Northeast Corner of Section 1, SW 1/4 of NE 1/4 of Section 1, T4N, R1E, W8W
 - (14) WBR #14 - Located 140 ft. South of 2820 ft. West from the Northeast Corner of Section 1, SW 1/4 of NE 1/4 of Section 1, T4N, R1E, W8W
 - (15) WBR #15 - Located 140 ft. South of 2820 ft. West from the Northeast Corner of Section 1, SW 1/4 of NE 1/4 of Section 1, T4N, R1E, W8W
 - (16) WBR #16 - Located 140 ft. South of 2820 ft. West from the Northeast Corner of Section 1, SW 1/4 of NE 1/4 of Section 1, T4N, R1E, W8W
 - (17) WBR #17 - Located 140 ft. South of 2820 ft. West from the Northeast Corner of Section 1, SW 1/4 of NE 1/4 of Section 1, T4N, R1E, W8W
 - (18) WBR #18 - Located 140 ft. South of 2820 ft. West from the Northeast Corner of Section 1, SW 1/4 of NE 1/4 of Section 1, T4N, R1E, W8W
 - (19) WBR #19 - Located 140 ft. South of 2820 ft. West from the Northeast Corner of Section 1, SW 1/4 of NE 1/4 of Section 1, T4N, R1E, W8W
 - (20) WBR #20 - Located 140 ft. South of 2820 ft. West from the Northeast Corner of Section 1, SW 1/4 of NE 1/4 of Section 1, T4N, R1E, W8W

This Map is for the purpose of identifying the location of Water Rights only and is not intended to provide the legal description or location of property ownership lines.

RECEIVED
SEP 25 2020
OWMRD



ENGINEERING - LAND SURVEYING - WATER RIGHTS
R. V. MCKINIS ENGINEERING
 7980 Franklin Long Road
 Florence, Oregon 97038
 (503) 462-3817

Rev. 05-08-2020



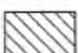
TO:
13531

FROM:

TRANSFER MAP In Name of Glenn Chowning T. 4N, R. 25 E. Section 13

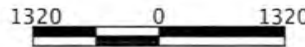
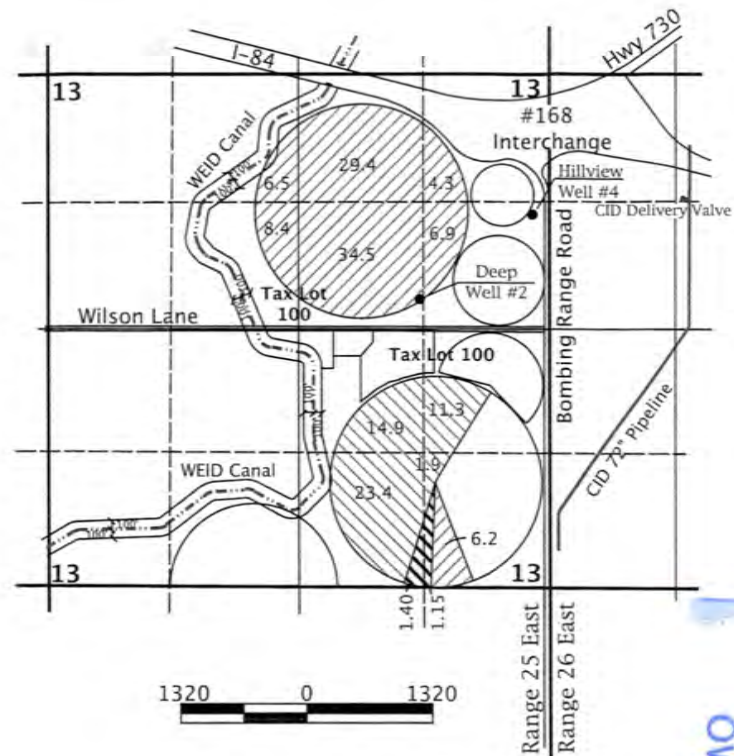
Permit #G-5953, Certificate 93290

Morrow County
Scale 1" = 1320 Ft.

-  Permit #G-5953, Cert. 93290
Transferred From This Location
-  Permit #G-5953, Cert. 93290
Not Involved in Transfer
-  Permit #G-1322, Cert. 86389
Not Involved in Transfer

Deep Well #2 - Located 330 Ft. North & 1310 Ft. East from the Center of Section 13

Hillview Well #4 - Located 3840 Ft. North & 2440 Ft. East from the South 1/4 of Section 13



RECEIVED
SEP 25 2020
OWRD



ENGINEERING - LAND SURVEYING - WATER RIGHTS

R. V. McKINNIS ENGINEERING

79980 Prindle Loop Road
Hermiston, Oregon 97838
(541) -567-2017

Rev. 09-01-2020




This Map is for the purpose of identifying the location of Water Rights only and is not intended to provide the legal dimensions or locations of property ownership lines.

13531

TRANSFER MAP
 In Name of
 Glenn Chowning
 T. 4N, R. 25 E.
 Section 13

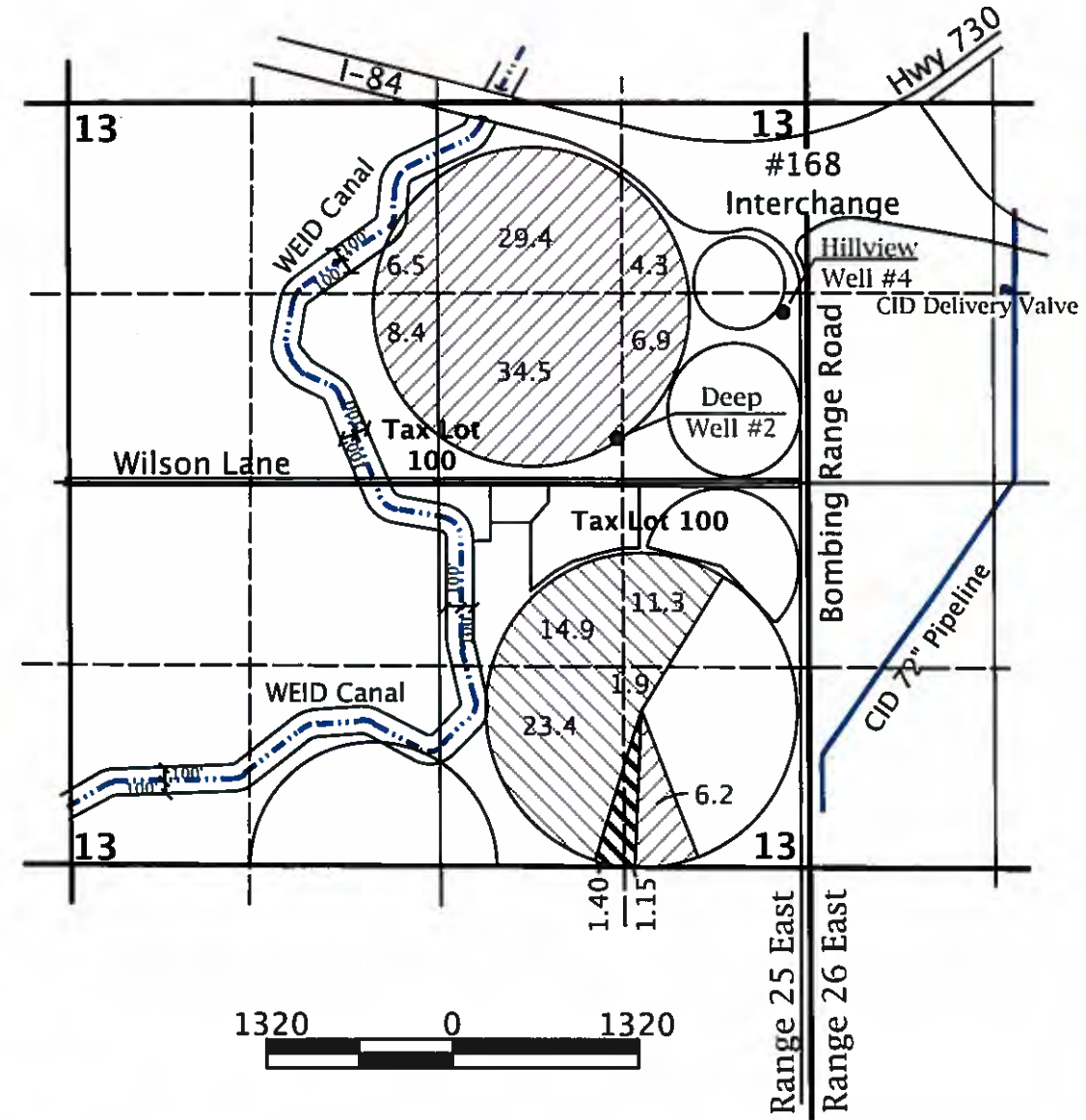
Permit #G-5953, Certificate 93290

Morrow County
 Scale 1" = 1320 Ft.

-  Permit #G-5953, Cert. 93290
Transferred From This Location
-  Permit #G-5953, Cert. 93290
Not Involved in Transfer
-  Permit #G-1322, Cert. 86389
Not Involved in Transfer

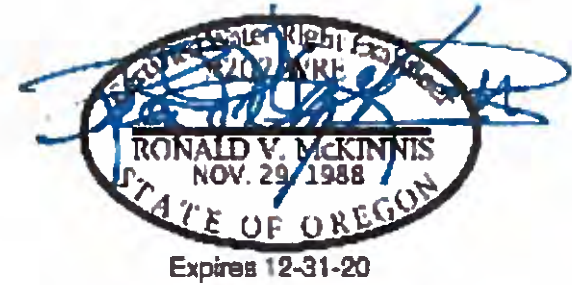
Deep Well #2 - Located 330 Ft. North & 1310 Ft. East from the Center of Section 13

Hillview Well #4 - Located 3840 Ft. North & 2440 Ft. East from the South 1/4 of Section 13



RECEIVED
 SEP 25 2020
 OWRD

This Map is for the purpose of identifying the location of Water Rights only and is not intended to provide the legal dimensions or locations of property ownership lines.

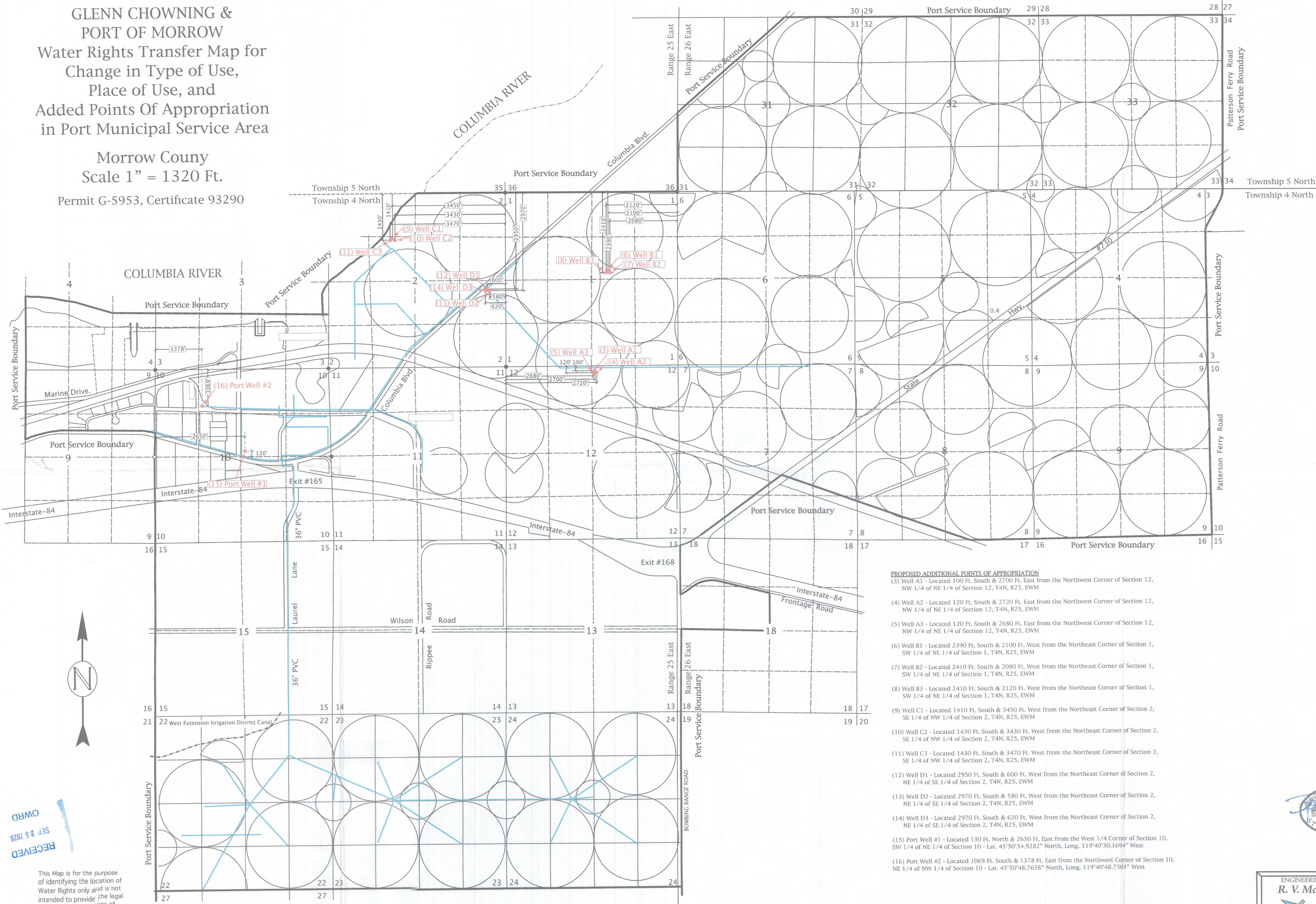


Rev. 09-01-2020

ENGINEERING - LAND SURVEYING - WATER RIGHTS
R. V. McKINNIS ENGINEERING
 79980 Prindle Loop Road
 Hermiston, Oregon 97838
 (541) -567-2017

GLENN CHOWNING & PORT OF MORROW Water Rights Transfer Map for Change in Type of Use, Place of Use, and Added Points Of Appropriation in Port Municipal Service Area

Morrow County
Scale 1" = 1320 Ft.
Permit G-5953, Certificate 93290



- PROPOSED ADDITIONAL POINTS OF APPROPRIATION**
- (3) Well A1 - Located 100 Ft. South & 2700 Ft. East from the Northwest Corner of Section 12, NW 1/4 of NE 1/4 of Section 12, T4N, R25, EWM
 - (4) Well A2 - Located 120 Ft. South & 2720 Ft. East from the Northwest Corner of Section 12, NW 1/4 of NE 1/4 of Section 12, T4N, R25, EWM
 - (5) Well A3 - Located 120 Ft. South & 2680 Ft. East from the Northwest Corner of Section 12, NW 1/4 of NE 1/4 of Section 12, T4N, R25, EWM
 - (6) Well B1 - Located 2390 Ft. South & 2100 Ft. West from the Northeast Corner of Section 1, SW 1/4 of NE 1/4 of Section 1, T4N, R25, EWM
 - (7) Well B2 - Located 2410 Ft. South & 2080 Ft. West from the Northeast Corner of Section 1, SW 1/4 of NE 1/4 of Section 1, T4N, R25, EWM
 - (8) Well B3 - Located 2410 Ft. South & 2120 Ft. West from the Northeast Corner of Section 1, SW 1/4 of NE 1/4 of Section 1, T4N, R25, EWM
 - (9) Well C1 - Located 1410 Ft. South & 3450 Ft. West from the Northeast Corner of Section 2, SE 1/4 of NW 1/4 of Section 2, T4N, R25, EWM
 - (10) Well C2 - Located 1430 Ft. South & 3430 Ft. West from the Northeast Corner of Section 2, SE 1/4 of NW 1/4 of Section 2, T4N, R25, EWM
 - (11) Well C3 - Located 1430 Ft. South & 3470 Ft. West from the Northeast Corner of Section 2, SE 1/4 of NW 1/4 of Section 2, T4N, R25, EWM
 - (12) Well D1 - Located 2950 Ft. South & 600 Ft. West from the Northeast Corner of Section 2, NE 1/4 of SE 1/4 of Section 2, T4N, R25, EWM
 - (13) Well D2 - Located 2970 Ft. South & 580 Ft. West from the Northeast Corner of Section 2, NE 1/4 of SE 1/4 of Section 2, T4N, R25, EWM
 - (14) Well D3 - Located 2970 Ft. South & 620 Ft. West from the Northeast Corner of Section 2, NE 1/4 of SE 1/4 of Section 2, T4N, R25, EWM
 - (15) Port Well #1 - Located 130 Ft. North & 2650 Ft. East from the West 1/4 Corner of Section 10, SW 1/4 of NE 1/4 of Section 10 - Lat. 45°50'34.9282" North, Long. 119°40'30.1694" West
 - (16) Port Well #2 - Located 1069 Ft. South & 1378 Ft. East from the Northwest Corner of Section 10, NE 1/4 of NW 1/4 of Section 10 - Lat. 45°50'48.7658" North, Long. 119°40'48.7503" West

RECEIVED
SEP 25 2020
OWRD

This Map is for the purpose of identifying the location of Water Rights only and is not intended to provide the legal dimensions or locations of property ownership lines.



ENGINEERING - LAND SURVEYING - WATER RIGHTS
R. V. MCKINNIS ENGINEERING
 79980 Prindle Loop Road
 Hermiston, Oregon 97838
 (541)-567-2017

Rev. 09-08-2020