

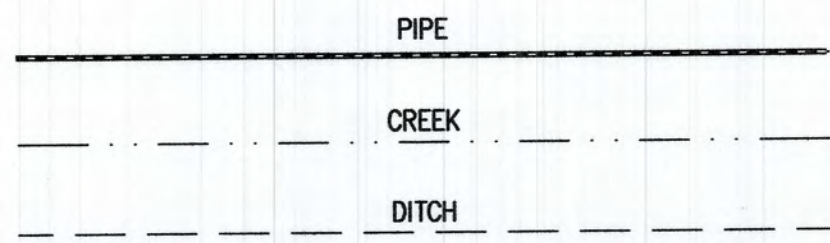
RECEIVED

JUN 27 2022

OWRD

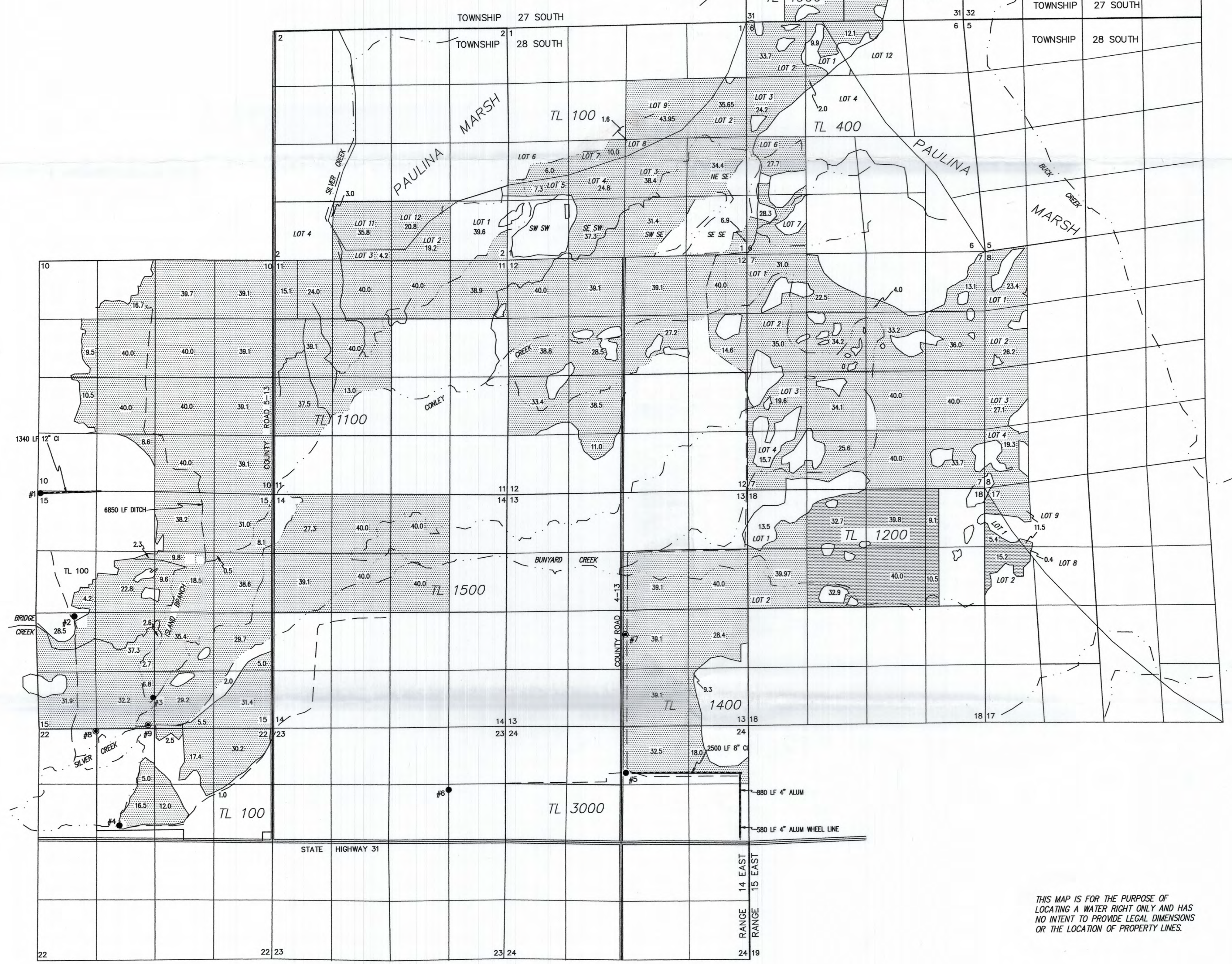
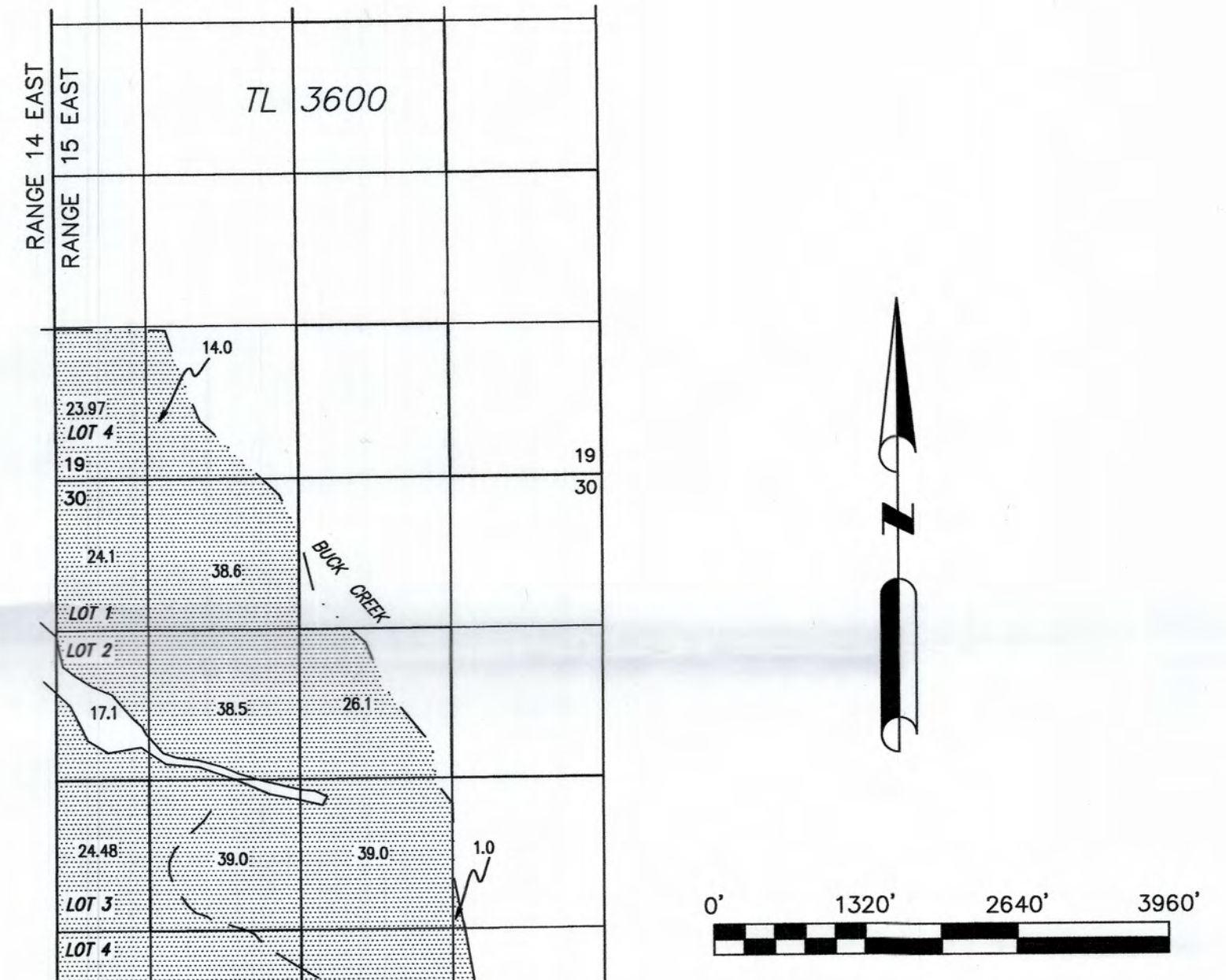
MAP TO ACCOMPANY APPLICATION TO ADD POINTS OF APPROPRIATION FOR BELL A LAND AND CATTLE CO., INC.

SECTIONS 19, 30 & 31, TOWNSHIP 27 SOUTH, RANGE 15 EAST, W.M. TAX LOTS: 3600, 4800, & 4900 & SECTIONS 1, 2, 10-15, 22 & 24, TOWNSHIP 28 SOUTH, RANGE 14 EAST, W.M. TAX LOT 100, 1100, 1200, 1400, 3000 & SECTIONS 6-8, 17 & 18, TOWNSHIP 28 SOUTH, RANGE 15 EAST, W.M. TAX LOTS: 400 & 1200



4,000.49 ACRES IS FROM PERMIT G10039 (C89345)

- #1 LAKE 1245 (AUTHORIZED) LOCATED IN THE NW 1/4 NW 1/4 SECTION 15, T28S R14E, W.M. AND 50 FEET SOUTH AND 60 FEET EAST FROM THE NW CORNER SECTION 15.
#2 LAKE 743 (AUTHORIZED) LOCATED IN THE NW 1/4 SW 1/4 SECTION 15, T28S R14E, W.M. AND 80 FEET SOUTH AND 850 FEET EAST FROM THE 1/4 CORNER COMMON TO SECTIONS 15 & 16.
#3 LAKE 746 (AUTHORIZED) LOCATED IN THE SE 1/4 SW 1/4 SECTION 15, T28S R14E, W.M. AND 600 FEET NORTH AND 2550 FEET EAST FROM THE SW CORNER SECTION 15.
#4 LAKE 747 (AUTHORIZED) LOCATED IN THE SE 1/4 NW 1/4 SECTION 22, T28S R14E, W.M. AND 2150 FEET SOUTH AND 1800 FEET EAST FROM THE NW CORNER SECTION 22.
#5 LAKE 742 (AUTHORIZED) LOCATED IN THE NW 1/4 NW 1/4 SECTION 24, T28S R14E, W.M. AND 950 FEET SOUTH AND 2510 FEET WEST FROM THE NE CORNER SECTION 24.
#6 LAKE 1317 (PROPOSED) LOCATED IN THE SE 1/4 NE 1/4 SECTION 23, T28S R14E, W.M. AND 1380 FEET SOUTH AND 1260 FEET WEST FROM THE NE CORNER SECTION 23.
#7 UNBUILT (PROPOSED) LOCATED IN THE NW 1/4 SE 1/4 SECTION 13, T28S R14E, W.M. AND 3125 FEET SOUTH AND 2645 FEET EAST FROM THE NW CORNER SECTION 13.
#8 UNBUILT (PROPOSED) LOCATED IN THE NW 1/4 NW 1/4 SECTION 22, T28S R14E, W.M. AND 50 FEET SOUTH AND 1255 FEET EAST FROM THE NW CORNER SECTION 22.
#9 UNBUILT (PROPOSED) LOCATED IN THE SE 1/4 SW 1/4 SECTION 15, T28S R14E, W.M. AND 80 FEET NORTH AND 2420 FEET EAST FROM THE SW CORNER SECTION 15.



THIS MAP IS FOR THE PURPOSE OF LOCATING A WATER RIGHT ONLY AND HAS NO INTENT TO PROVIDE LEGAL DIMENSIONS OR THE LOCATION OF PROPERTY LINES.