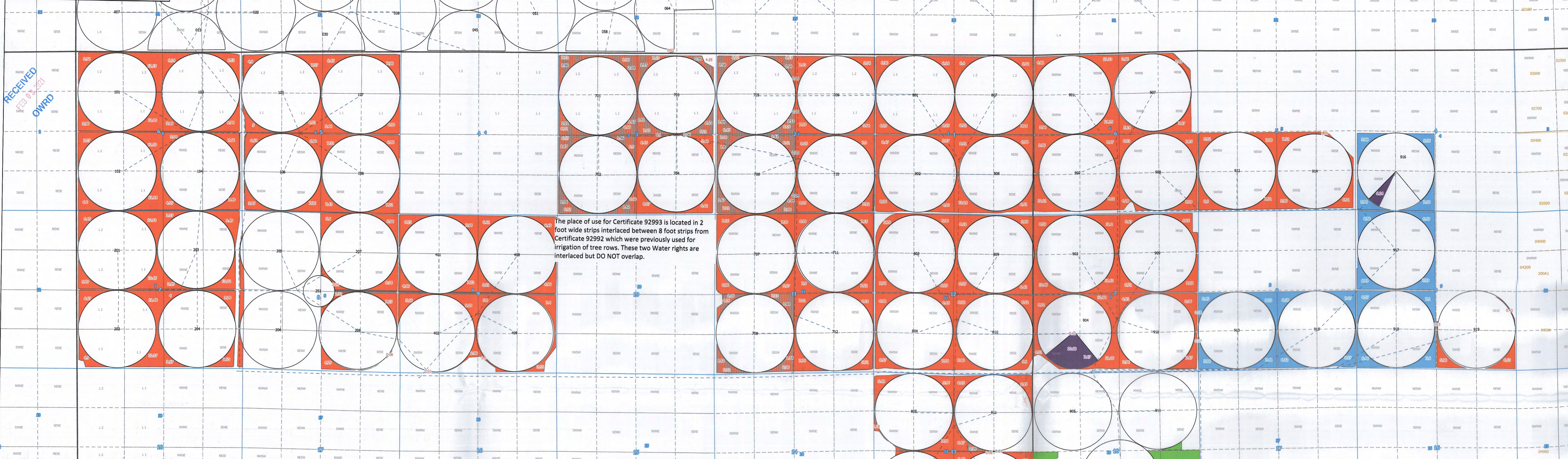
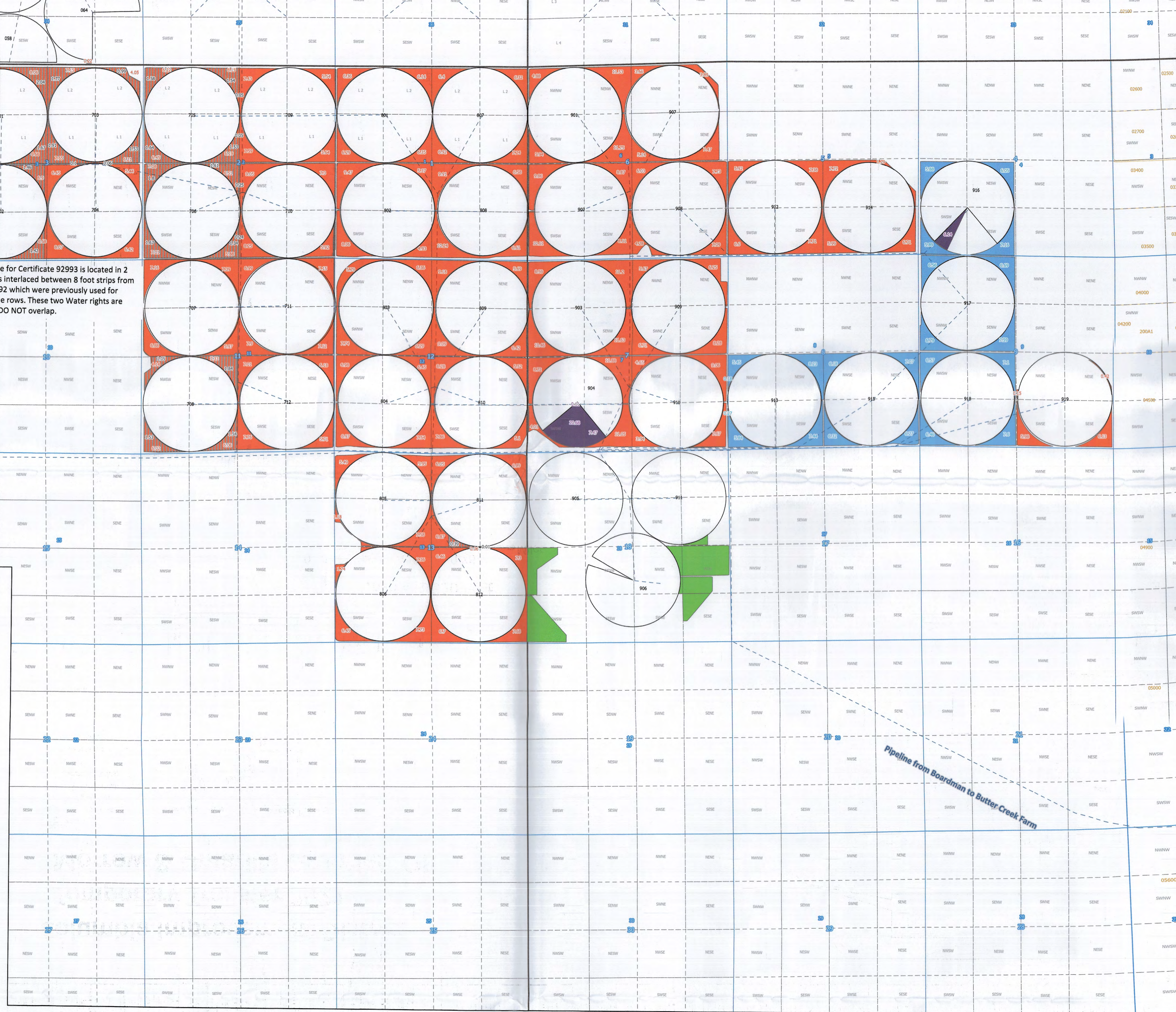
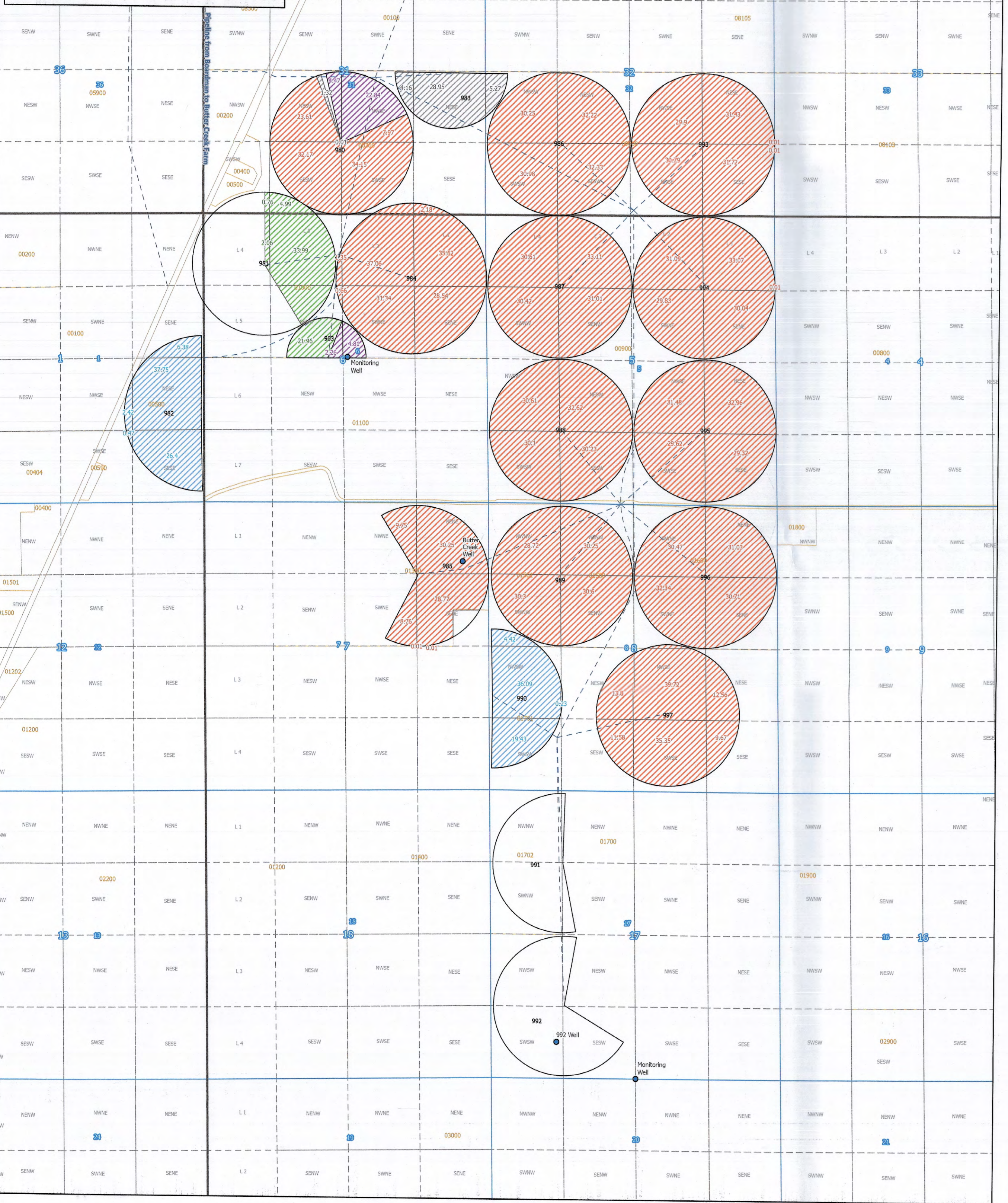


Boardman Farm



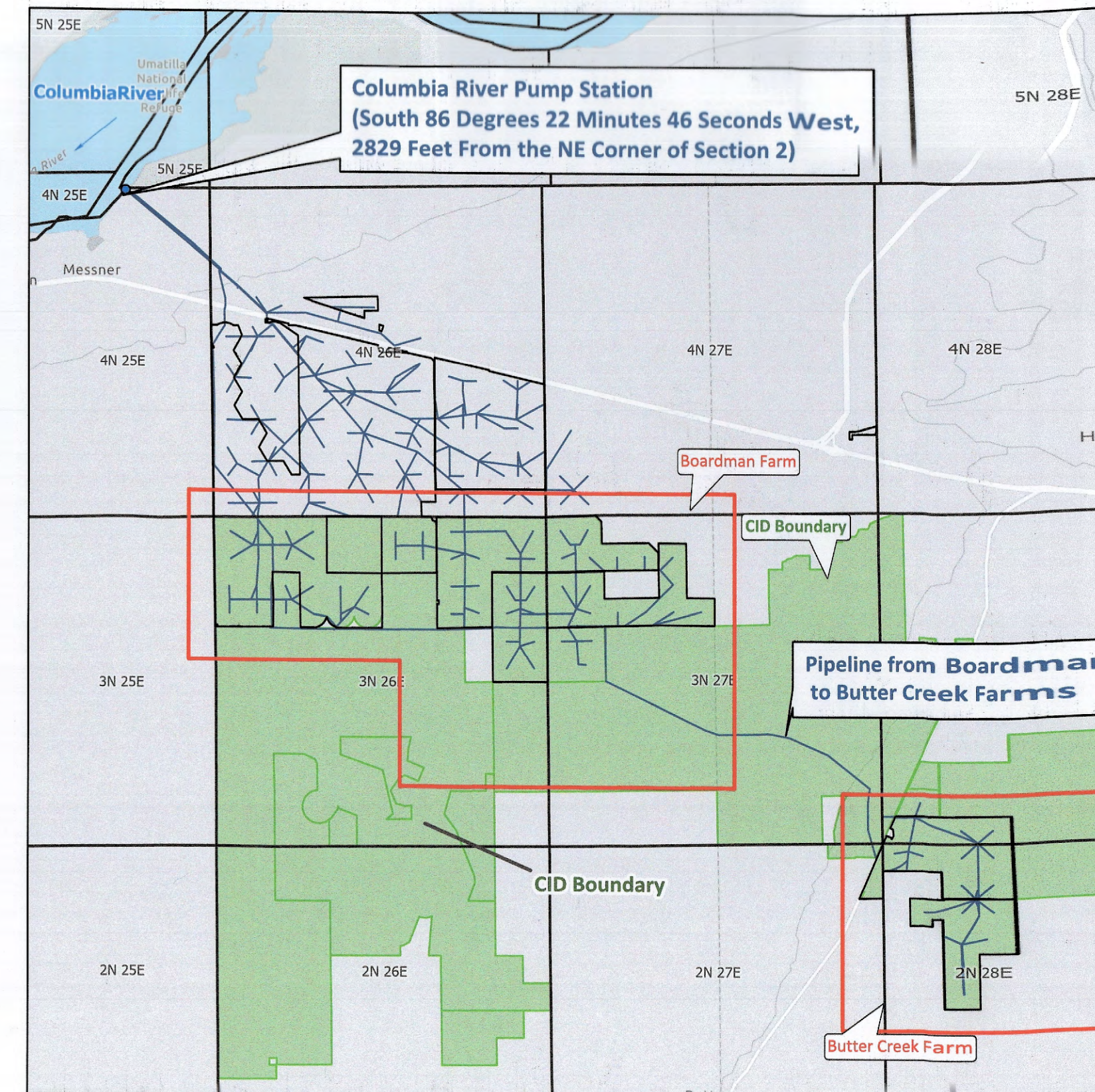
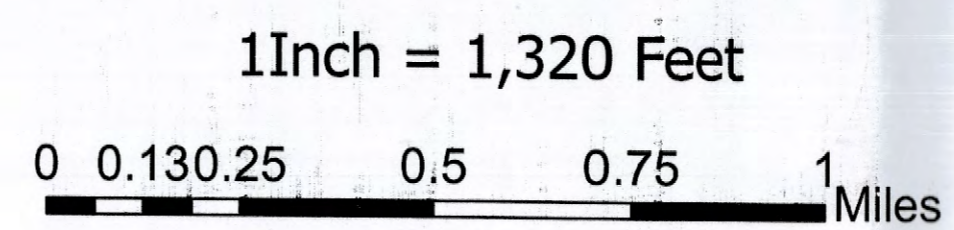
Butter Creek Farm



**Columbia Improvement District
Temporary Transfer 2021
Morrow & Umatilla Counties, OR**

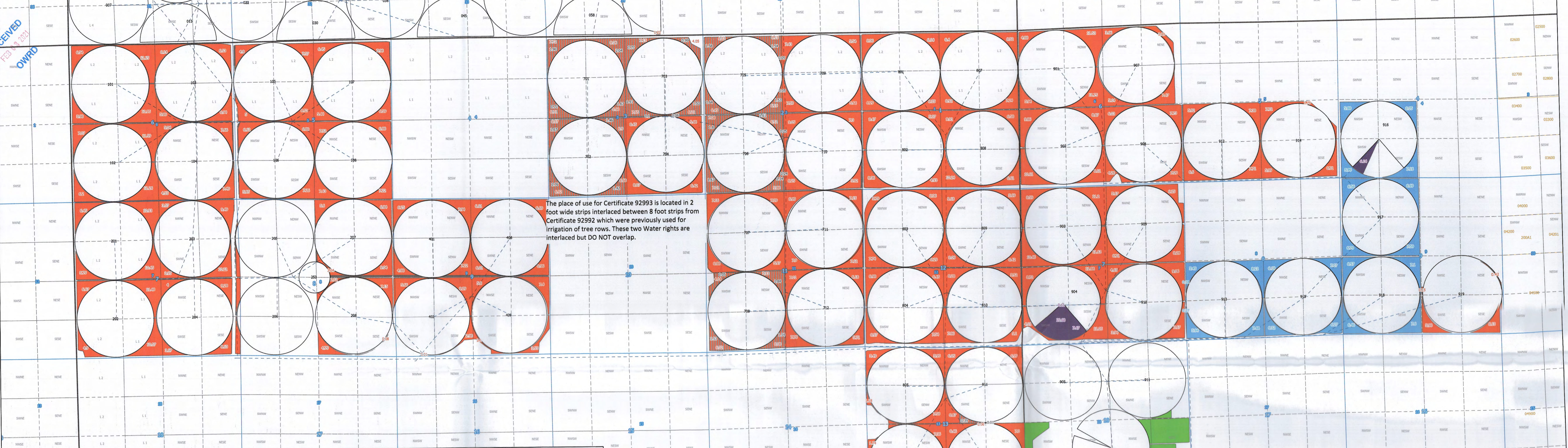
- Legend**
- Point of Diversion
 - Water Transport
 - Butter Creek Fields (2021)
 - Township & Range
 - Sections
 - 1/4-1/4 Sections
 - County Parcels

Water Right	Acres	From Lands	To Lands
92990	133.59		
92991	63.76		
92992	1425.07		
92993	39.71		
95154	34.4		

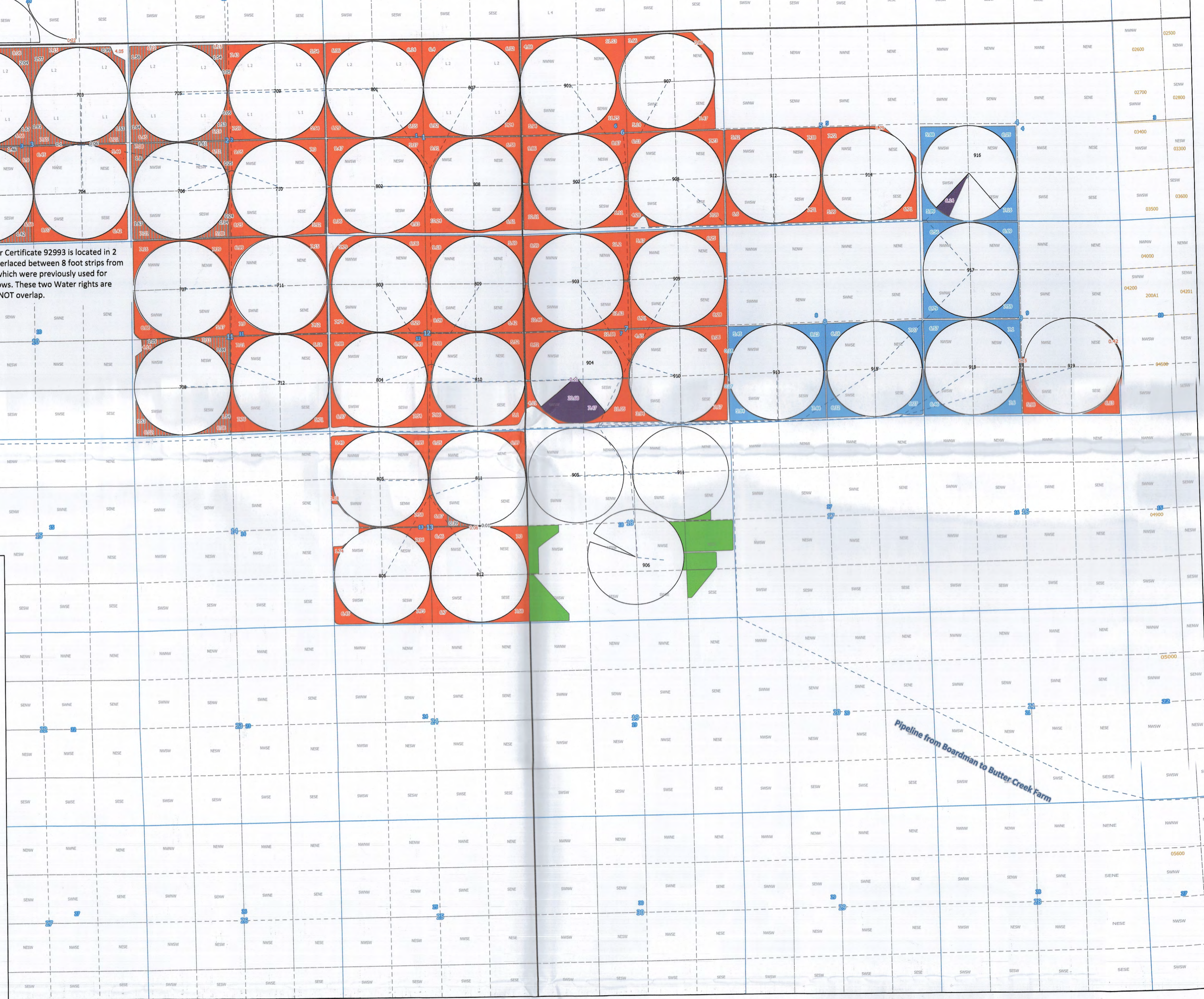
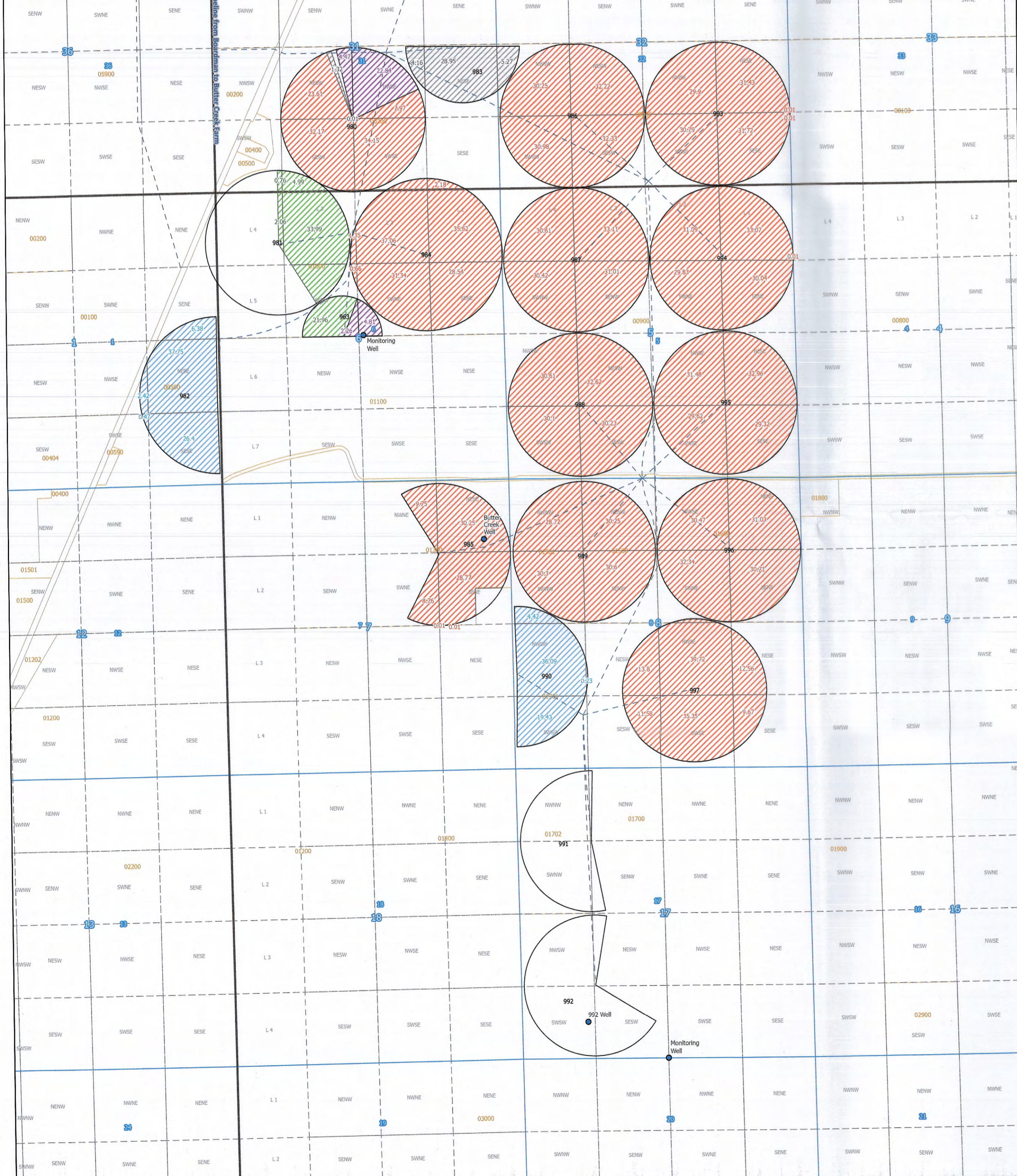


Boardman Farm

RECEIVED
FEB 12 2021
OWNED



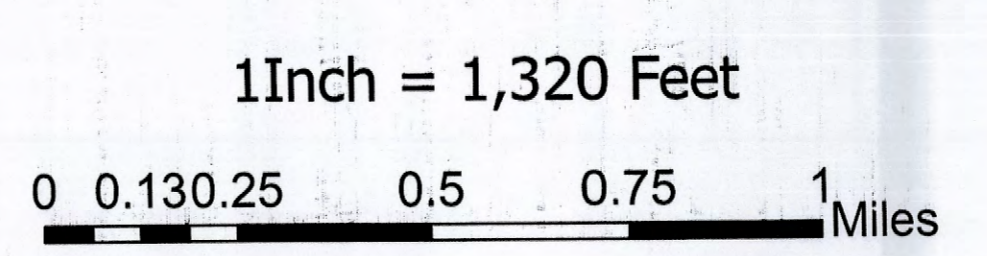
Butter Creek Farm



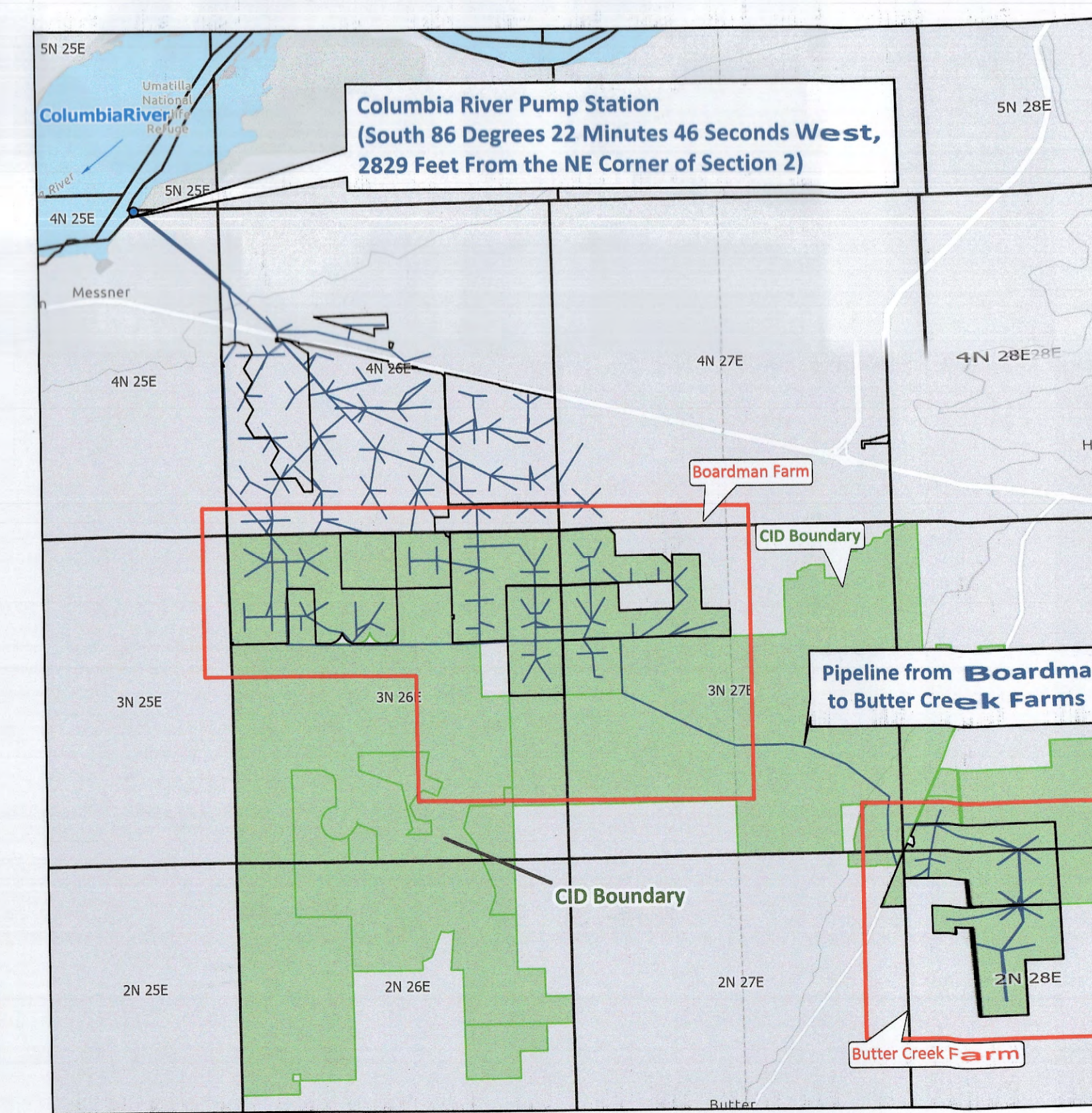
Columbia Improvement District Temporary Transfer 2021 Morrow & Umatilla Counties, OR

- Legend**
- Point of Diversion
 - Water Transport
 - Butter Creek Fields (2021)
 - Township & Range
 - Sections
 - 1/4-1/4 Sections
 - County Parcels

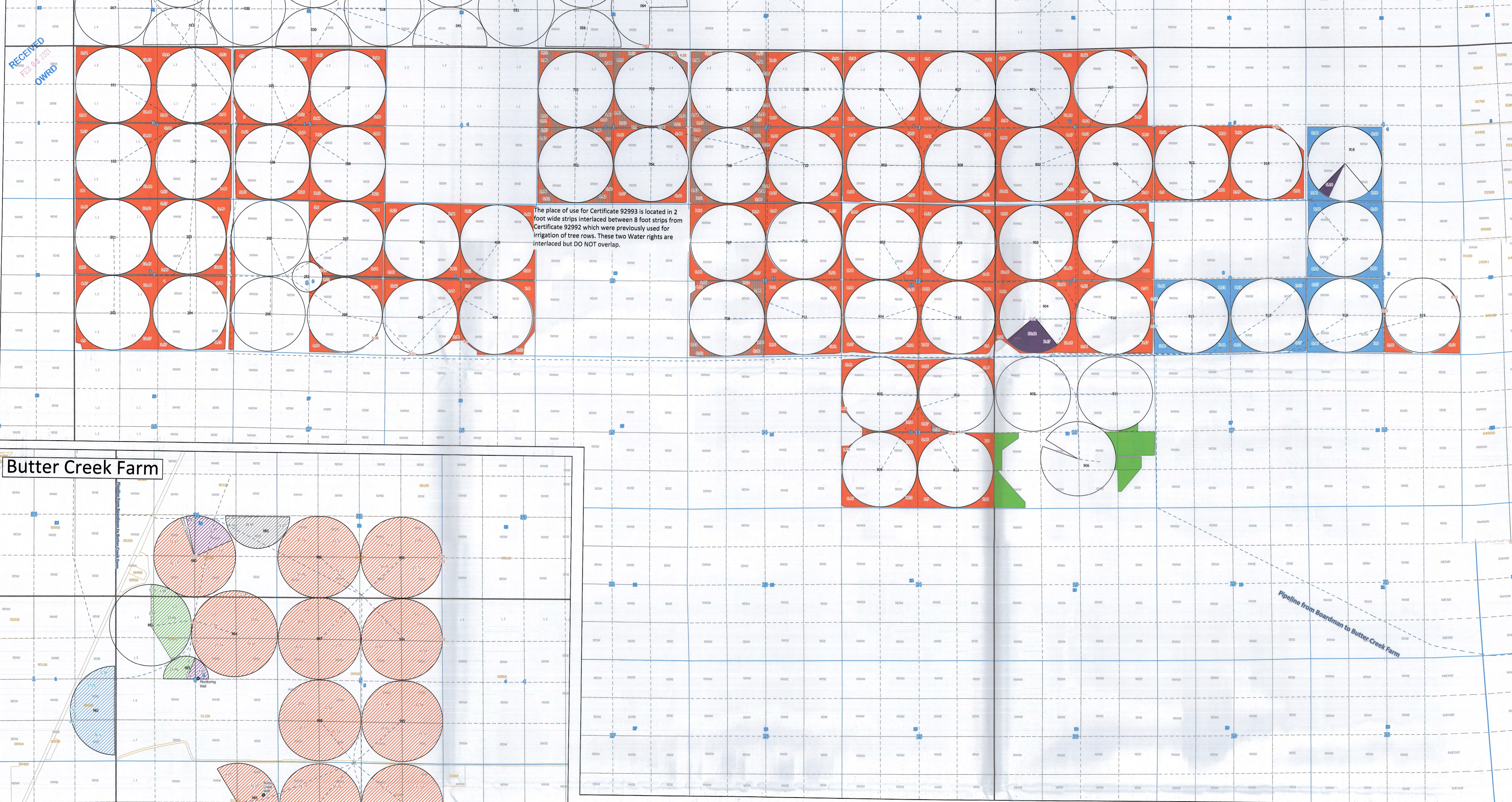
Water Right	Acres	From Lands	To Lands
92990	133.59	[Green]	[Red]
92991	63.76	[Blue]	[Red]
92992	1425.07	[Red]	[Red]
92993	39.71	[Red]	[Red]
95154	34.4	[Green]	[Green]



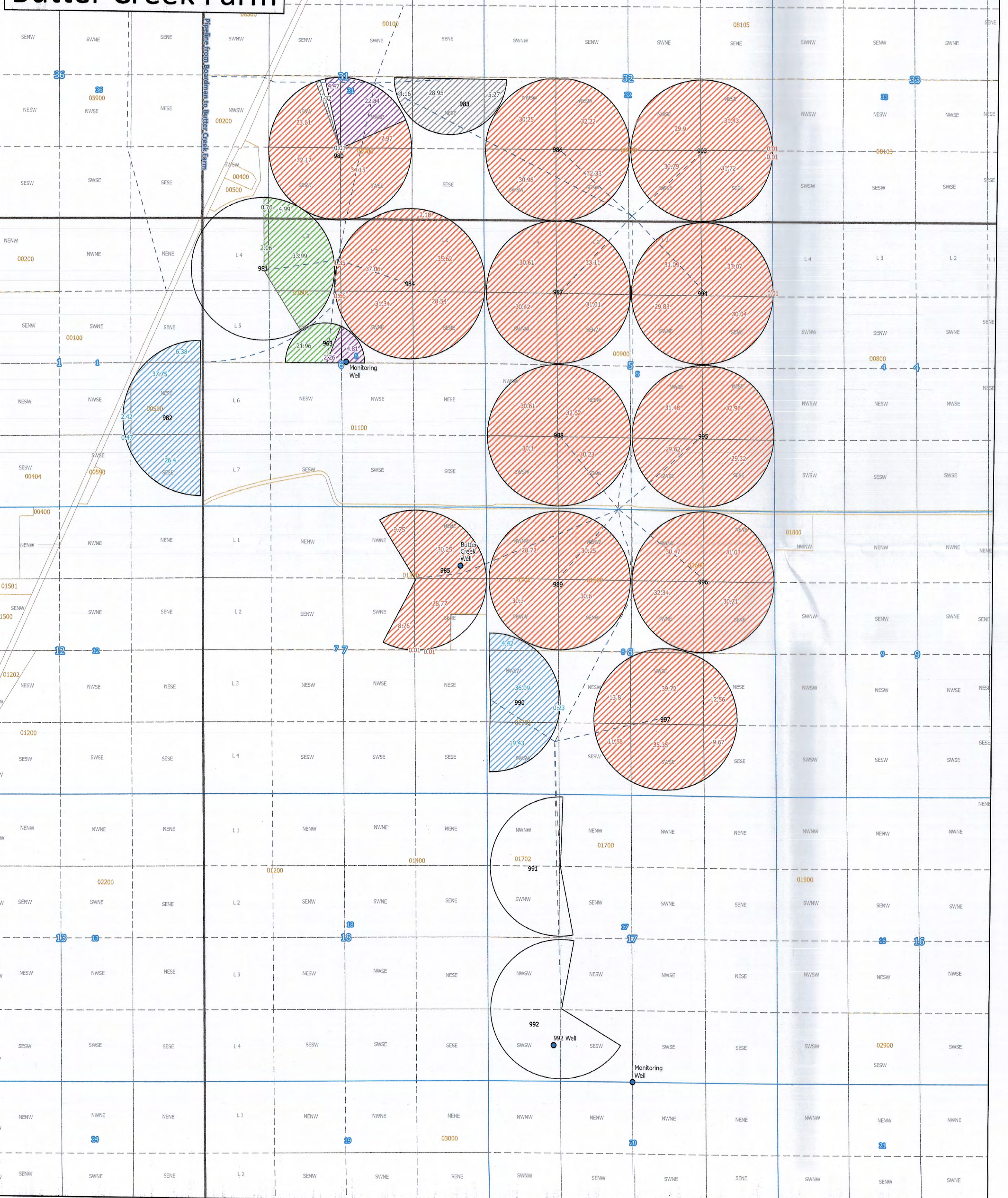
Date: 1/29/2021



Boardman Farm



Butter Creek Farm



The place of use for Certificate 92993 is located in 2 foot wide strips interlaced between 8 foot strips from Certificate 92992 which were previously used for irrigation of tree rows. These two Water rights are interlaced but DO NOT overlap.

**Columbia Improvement District
Temporary Transfer 2021
Morrow & Umatilla Counties, OR**

- Legend**
- Point of Diversion
 - Water Transport
 - Butter Creek Fields (2021)
 - Township & Range
 - Sections
 - 1/4-1/4 Sections
 - County Parcels

Water Right	Acres	From Lands	To Lands
92990	133.59	[Green]	[Blue]
92991	63.76	[Green]	[Blue]
92992	1425.07	[Red]	[Blue]
92993	39.71	[Red]	[Blue]
95154	34.4	[Green]	[Blue]

