

2022 DISTRRACT TRANSFER  
 EAGLE POINT IRRIGATION DISTRICT  
 SECTION 22, T.35S, R.1W, W.M.  
 JACKSON COUNTY, OREGON

MAP 4 OF 4

District Internal Notice  
 # T-2022-006

Certificate 89373

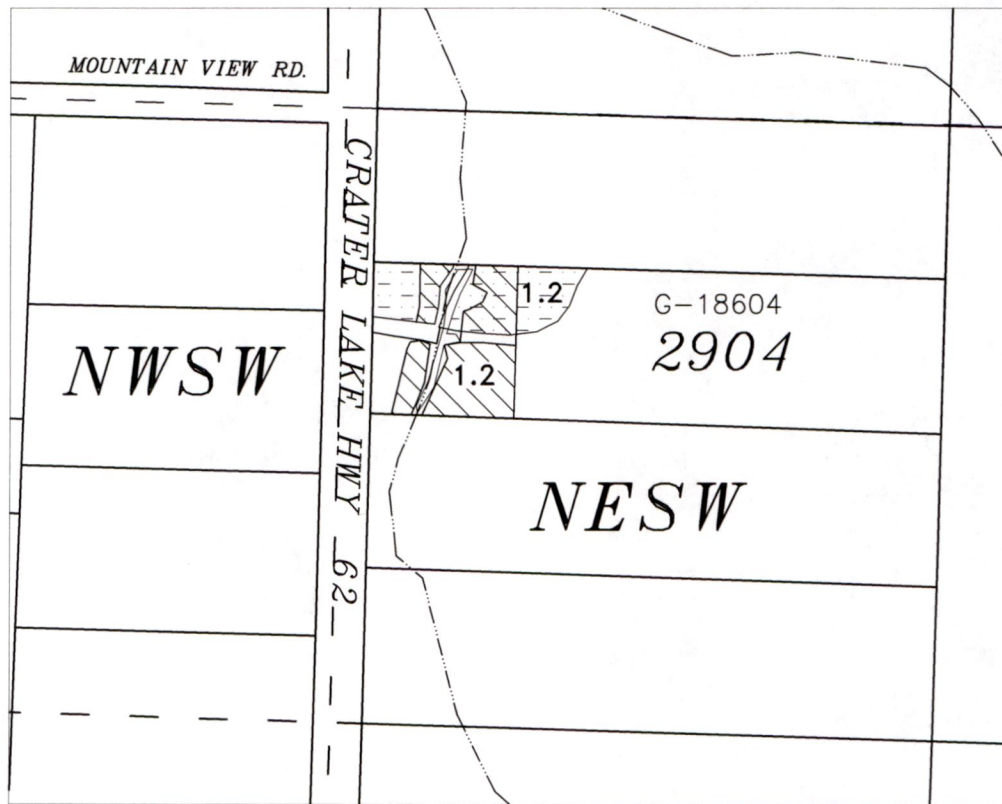
Assessor Map T-35S-R1W-22

CHANGE IN PLACE OF USE

RECEIVED

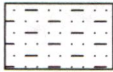

DEC 19 2022

OWRD  
 SALEM, OREGON



Legend

Water User :  
 Glahn, Fisher, Robertson  
 P.O. Box 795  
 Cave Junction, OR 97523

-  1.2 Acres OFF
-  1.2 Acres ON



EAGLE POINT IRRIGATION DISTRICT  
 2329 BROPHY ROAD - P.O. BOX 157  
 EAGLE POINT, OR 97524  
 PHONE 541-826-3411 - FAX 541-826-8738

Scale  
 1 inch = 400 feet

This map is not intended to provide legal dimensions or locations of property ownership lines

12/5/2022 n.e.d.

14131

2022 District Transfer

MAP 3 OF 4

EAGLE POINT IRRIGATION DISTRICT

District Internal Notice  
# T-2022-005

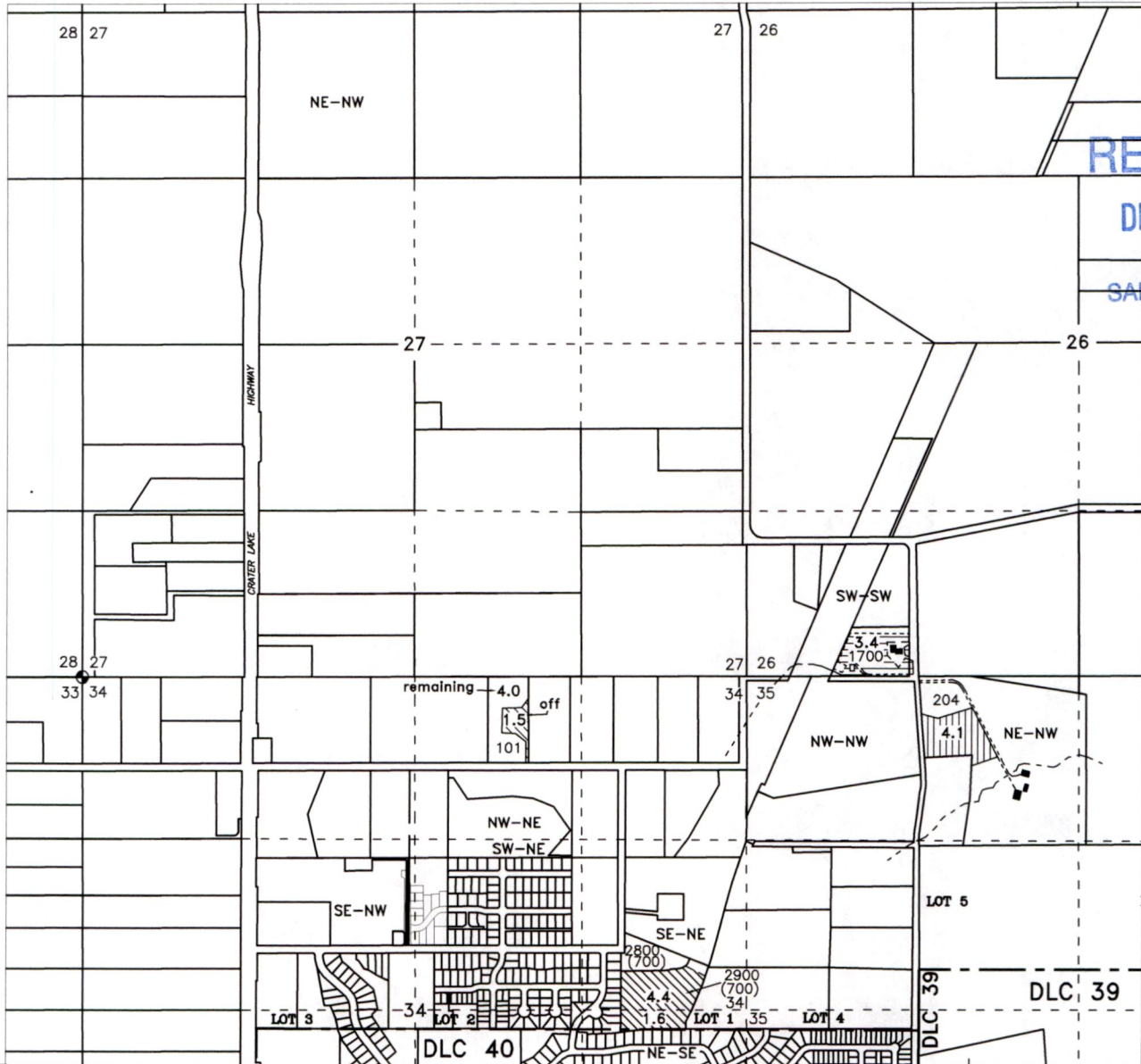
T.35S, R.1W, W.M.  
JACKSON COUNTY, OREGON

CHANGE IN PLACE OF USE  
Certificate 89373

RECEIVED

DEC 19 2022

OWRD  
SALEM, OREGON

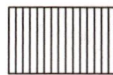


Assessor Map T-35S-R1W-27  
Assessor Map T-35S-R1W-34 AD  
Assessor Map T-35S-R1W-35  
Assessor Map T-35S-R1W-34

Legend



7.5 Acres OFF  
Tax Lot 2900 (700) 6 Ac (E.P. School Dist)  
Tax Lot 101 1.5 Ac. (Russell)



4.1 Acres ON  
Tax Lot 204  
Douglas Casey  
Jeanne Shiroma



3.4 Acres ON  
Tax Lot 1700  
Mathew Boren

EAGLE POINT IRRIGATION DISTRICT  
2329 BROPHY ROAD - P.O. BOX 157  
EAGLE POINT, OR 97524  
PHONE 541-826-3411 - FAX 541-826-8738

Scale  
1 inch = 1320 feet



14131

12/5/2022 - n.e.d.

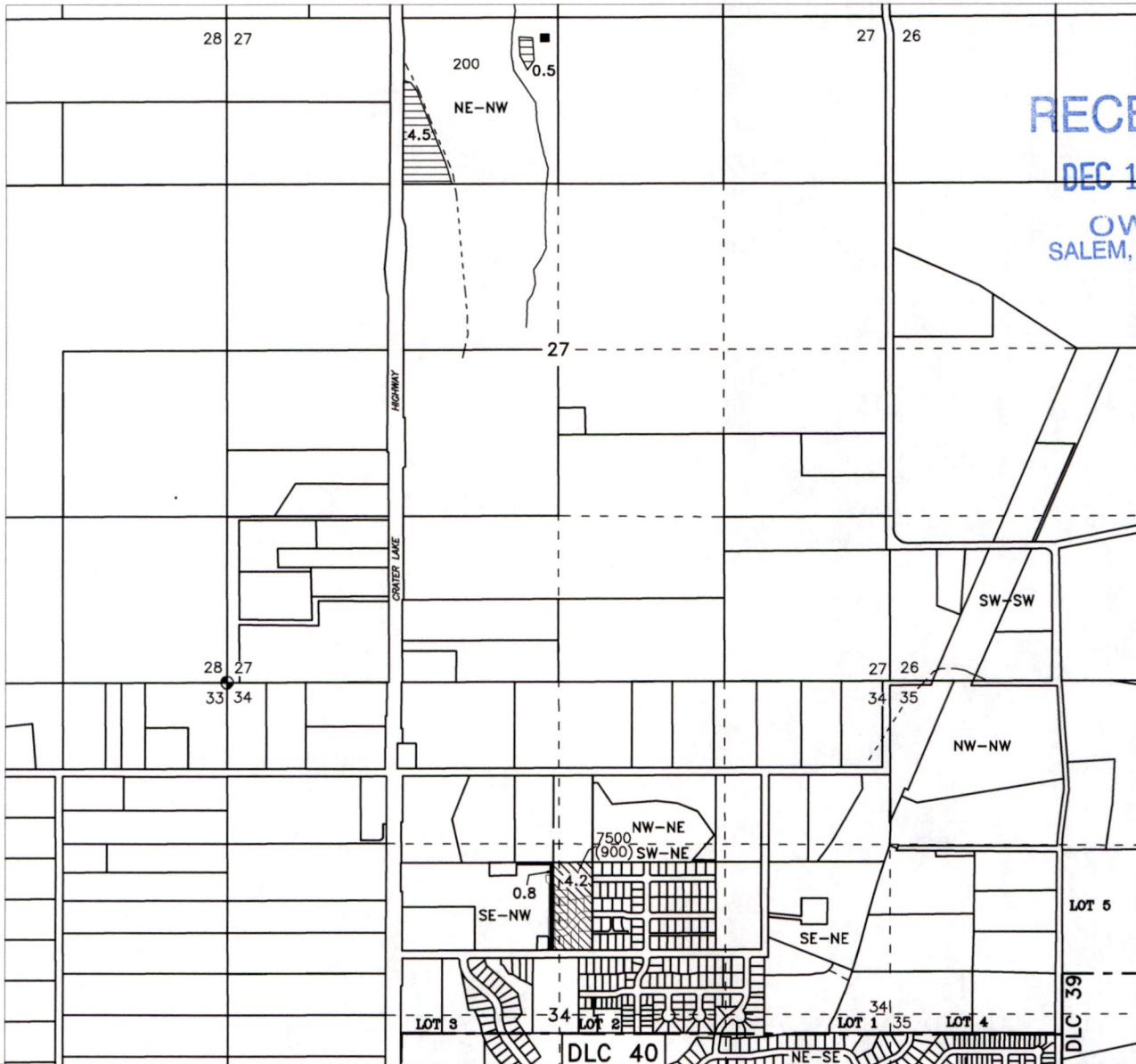
2022 DISTRICT TRANSFER  
 EAGLE POINT IRRIGATION DISTRICT

MAP 2 OF 4

District Internal Notice  
 # T-2022-004

T.35S, R.1W, W.M.  
 JACKSON COUNTY, OREGON

CHANGE IN PLACE OF USE  
 Certificate 89373



RECEIVED  
 DEC 19 2022  
 OWRD  
 SALEM, OREGON

Legend

Scale

Assessor Map T-35S-R1W-27  
 Assessor Map T-35S-R1W-34 AC

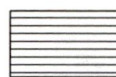
Receiving Water User :

Alvarez & Margarita Machain  
 13450 Hwy. 62  
 Eagle Point, OR 97524-4435

EAGLE POINT IRRIGATION DISTRICT  
 2329 BROPHY ROAD - P.O. BOX 157  
 EAGLE POINT, OR 97524  
 PHONE 541-826-3411 - FAX 541-826-8738



5.0 Acres OFF  
 Tax Lot 7500 (900)  
 Snyder Creek Development, LLC



5.0 Acres ON  
 Tax Lot 200  
 Machain - Alvarez

1 inch = 1320 feet



12/5/2022 - n.e.d.

14131

2022 District Transfer  
 EAGLE POINT IRRIGATION DISTRICT  
 T.35S, R.1W, W.M.  
 JACKSON COUNTY, OREGON

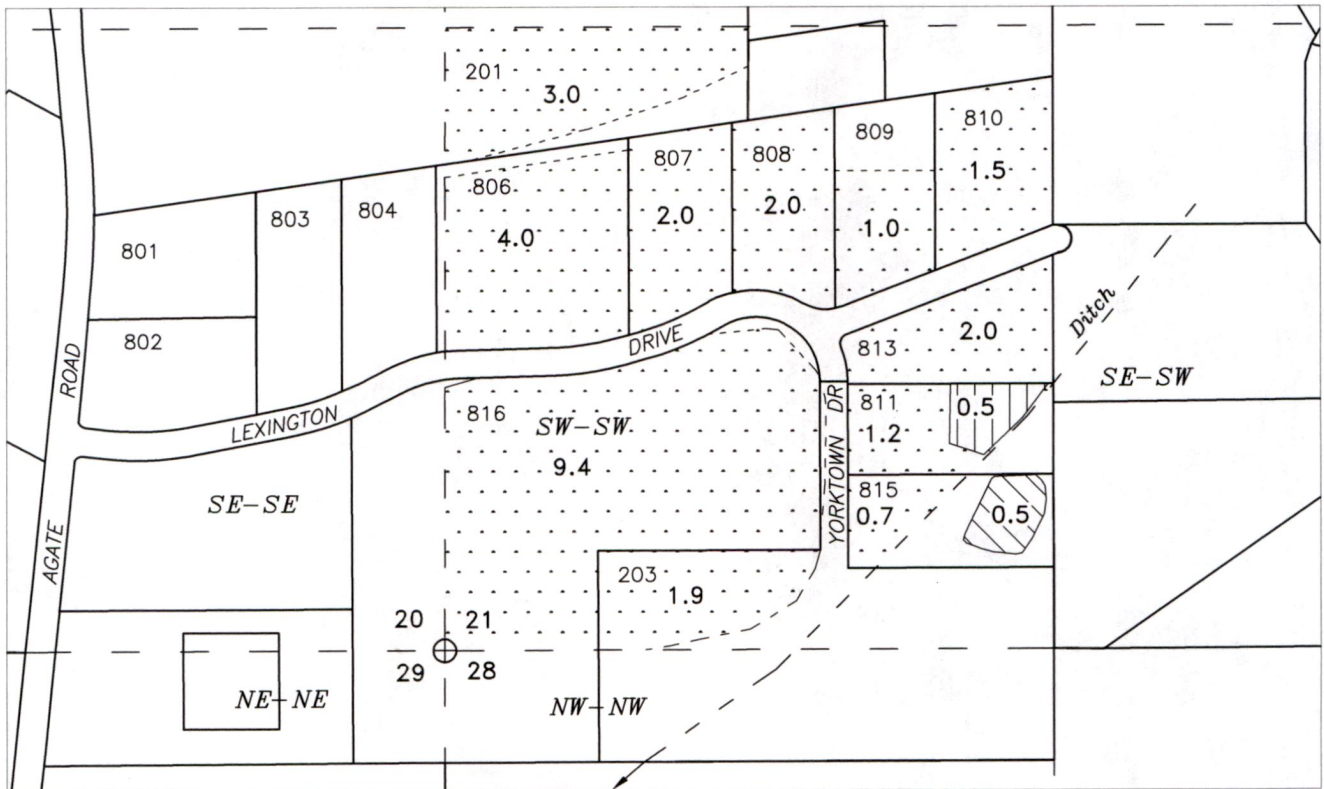
MAP 1 OF 4

District Internal Notice  
 # T-2022-003

Assessor Map T-35S-R1W-21  
 Assessor Map T-35S-R1W-28

Certificate 89373

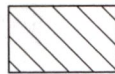
CHANGE IN PLACE OF USE



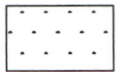
Legend



0.5 Acres OFF



0.5 Acres ON



28.7 Acres Unaffected

Scale

1 inch = 400 feet



Water User :  
 ORCA, LLC (Roberts et al)  
 P.O. Box 2627  
 White City, OR 97503-2627

EAGLE POINT IRRIGATION DISTRICT  
 2329 BROPHY ROAD - P.O. BOX 157  
 EAGLE POINT, OR 97524  
 PHONE 541-826-3411 - FAX 541-826-8738

RECEIVED

DEC 19 2022

OWRD  
 SALEM, OREGON

14131



12/5/2022 - n.e.d.