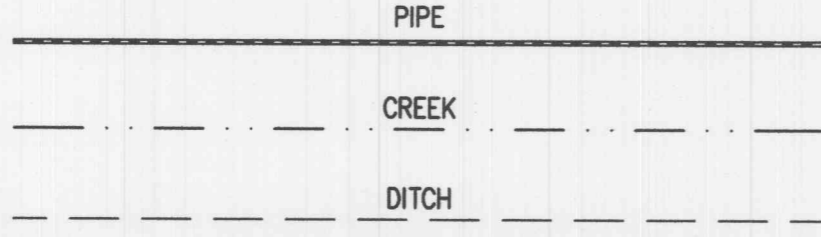


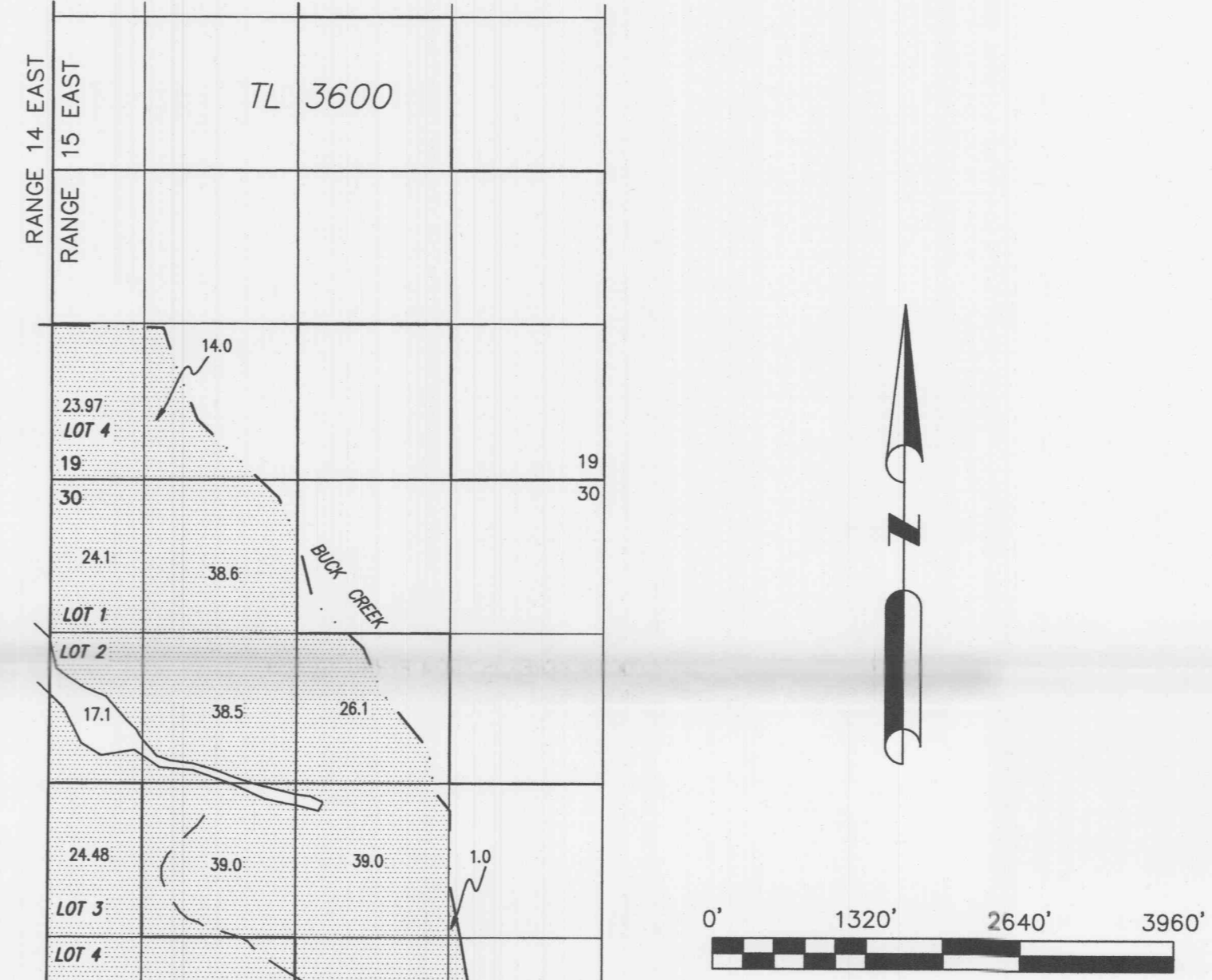
MAP TO ACCOMPANY APPLICATION TO ADD
POINTS OF APPROPRIATION FOR
BELL A LAND AND CATTLE CO., INC.

SECTIONS 19, 30 & 31, TOWNSHIP 27 SOUTH, RANGE 15 EAST, W.M.
TAX LOTS: 3600, 4800, & 4900 &
SECTIONS 1, 2, 10-15, 22 & 24, TOWNSHIP 28 SOUTH, RANGE 14
EAST, W.M.
TAX LOT 100, 1100, 1400, 3000 &
SECTIONS 6-8, 17 & 18, TOWNSHIP 28 SOUTH, RANGE 15 EAST, W.M.
TAX LOTS: 400 & 1200



4,000.49 ACRES IS FROM PERMIT G10039
(C89345)

- #1 LAKE 1245 (AUTHORIZED)
LOCATED IN THE NW 1/4 NW 1/4 SECTION 15, T28S R14E, W.M. AND 50 FEET SOUTH AND 80 FEET EAST FROM THE NW CORNER SECTION 15.
- #2 LAKE 743 (AUTHORIZED)
LOCATED IN THE NW 1/4 SW 1/4 SECTION 15, T28S R14E, W.M. AND 80 FEET SOUTH AND 850 FEET EAST FROM THE 1/4 CORNER COMMON TO SECTIONS 15 & 16.
- #3 LAKE 746 (AUTHORIZED)
LOCATED IN THE SE 1/4 SW 1/4 SECTION 15, T28S R14E, W.M. AND 600 FEET NORTH AND 2550 FEET EAST FROM THE SW CORNER SECTION 15.
- #4 LAKE 747 (AUTHORIZED)
LOCATED IN THE SE 1/4 NW 1/4 SECTION 22, T28S R14E, W.M. AND 2150 FEET SOUTH AND 1800 FEET EAST FROM THE NW CORNER SECTION 22.
- #5 LAKE 742 (AUTHORIZED)
LOCATED IN THE NW 1/4 NE 1/4 SECTION 24, T28S R14E, W.M. AND 950 FEET SOUTH AND 2510 FEET WEST FROM THE NE CORNER SECTION 24.
- #6 LAKE 1317 (PROPOSED)
LOCATED IN THE SE 1/4 NE 1/4 SECTION 23, T28S R14E, W.M. AND 1380 FEET SOUTH AND 1290 FEET WEST FROM THE NE CORNER SECTION 23.
- #7 UNBUILT (PROPOSED)
LOCATED IN THE NW 1/4 SE 1/4 SECTION 13, T28S R14E, W.M. AND 3125 FEET SOUTH AND 2645 FEET EAST FROM THE NW CORNER SECTION 13.
- #8 UNBUILT (PROPOSED)
LOCATED IN THE NW 1/4 NW 1/4 SECTION 22, T28S R14E, W.M. AND 50 FEET SOUTH AND 1255 FEET EAST FROM THE SW CORNER SECTION 22.
- #9 UNBUILT (PROPOSED)
LOCATED IN THE SE 1/4 SW 1/4 SECTION 15, T28S R14E, W.M. AND 80 FEET NORTH AND 2420 FEET EAST FROM THE SW CORNER SECTION 15.



Certified Water Right Examiner
#51384-WRE
Scott B. Montgomery
May 21, 2001
STATE OF OREGON
RENEWAL DATE: 12/31/2024

THIS MAP IS FOR THE PURPOSE OF
LOCATING A WATER RIGHT ONLY AND HAS
NO INTENT TO PROVIDE LEGAL DIMENSIONS
OR THE LOCATION OF PROPERTY LINES.

RECEIVED
FEB 21 2023
OWRD

RECEIVED
JAN 23 2023
OWRD