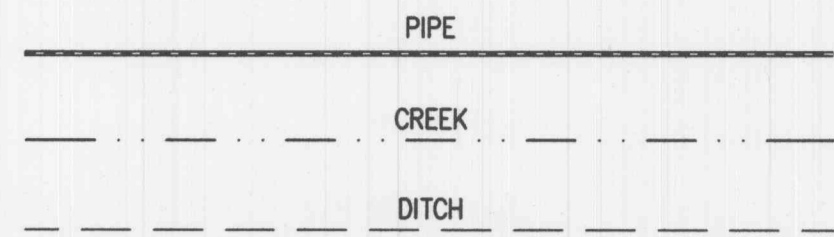


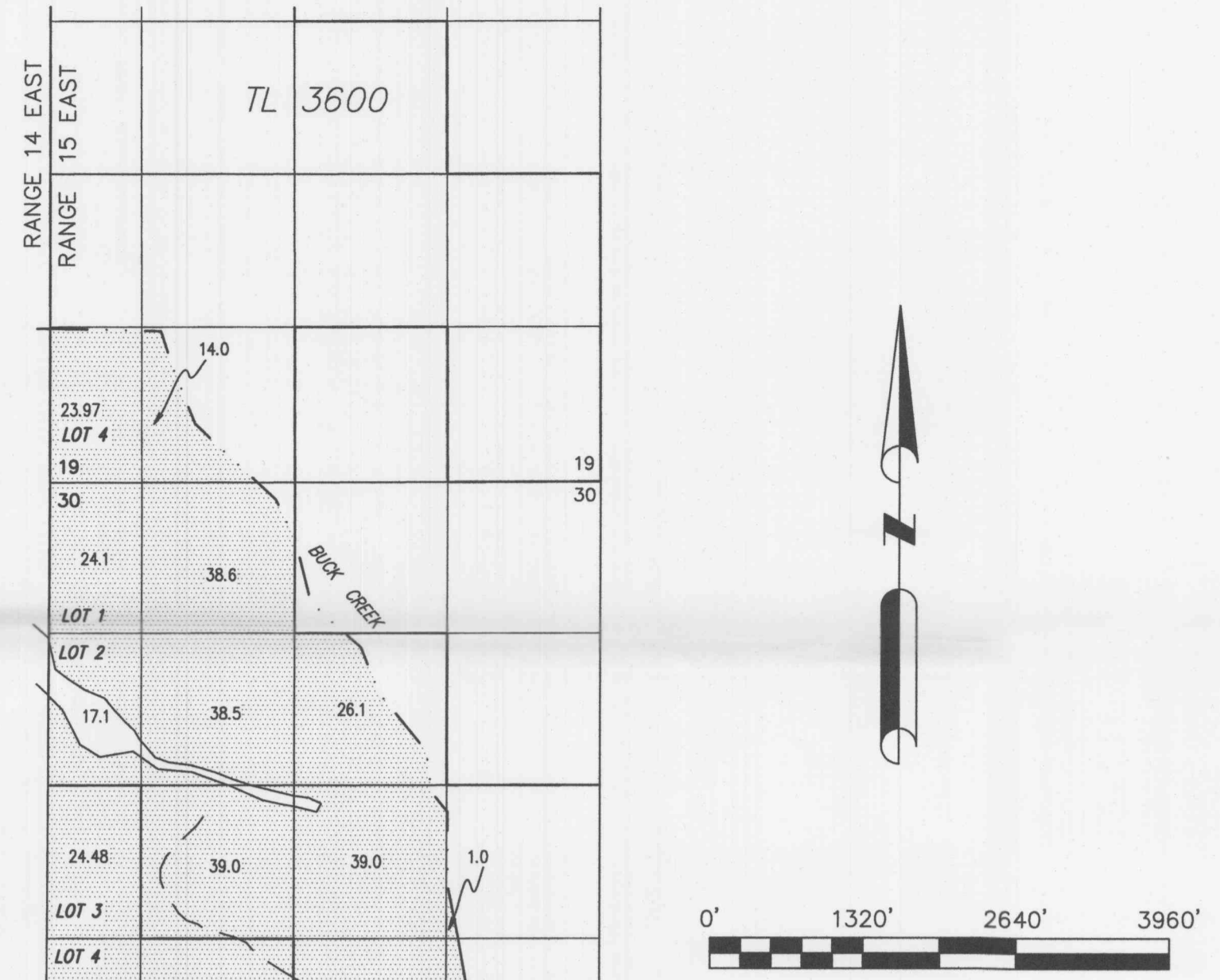
MAP TO ACCOMPANY APPLICATION TO ADD
POINTS OF APPROPRIATION FOR
BELL A LAND AND CATTLE CO., INC.

SECTIONS 19, 30 & 31, TOWNSHIP 27 SOUTH, RANGE 15 EAST, W.M.
TAX LOTS: 3600, 4800, & 4900 &
SECTIONS 1, 2, 10-15, 22 & 24, TOWNSHIP 28 SOUTH, RANGE 14
EAST, W.M.
TAX LOT 100, 1100, 1400, 3000 &
SECTIONS 6-8, 17 & 18, TOWNSHIP 28 SOUTH, RANGE 15 EAST, W.M.
TAX LOTS: 400 & 1200



4,000.49 ACRES IS FROM PERMIT G10039
(C89345)

- #1 LAKE 1245 (AUTHORIZED)
LOCATED IN THE NW 1/4 NW 1/4 SECTION 15, T28S R14E, W.M. AND 50 FEET SOUTH AND 60 FEET EAST FROM THE NW CORNER SECTION 15.
- #2 LAKE 743 (AUTHORIZED)
LOCATED IN THE NW 1/4 SW 1/4 SECTION 15, T28S R14E, W.M. AND 80 FEET SOUTH AND 850 FEET EAST FROM THE 1/4 CORNER COMMON TO SECTIONS 15 & 16.
- #3 LAKE 746 (AUTHORIZED)
LOCATED IN THE SE 1/4 SW 1/4 SECTION 15, T28S R14E, W.M. AND 600 FEET NORTH AND 2550 FEET EAST FROM THE SW CORNER SECTION 15.
- #4 LAKE 747 (AUTHORIZED)
LOCATED IN THE SE 1/4 NW 1/4 SECTION 22, T28S R14E, W.M. AND 2150 FEET SOUTH AND 1800 FEET EAST FROM THE NW CORNER SECTION 22.
- #5 LAKE 742 (AUTHORIZED)
LOCATED IN THE NW 1/4 NE 1/4 SECTION 24, T28S R14E, W.M. AND 950 FEET SOUTH AND 2510 FEET WEST FROM THE NE CORNER SECTION 24.
- #6 LAKE 1317 (PROPOSED)
LOCATED IN THE SE 1/4 NE 1/4 SECTION 23, T28S R14E, W.M. AND 1380 FEET SOUTH AND 1260 FEET WEST FROM THE NE CORNER SECTION 23.
- #7 UNBUILT (PROPOSED)
LOCATED IN THE NW 1/4 SE 1/4 SECTION 13, T28S R14E, W.M. AND 3125 FEET SOUTH AND 2645 FEET EAST FROM THE NW CORNER SECTION 13.
- #8 UNBUILT (PROPOSED)
LOCATED IN THE NW 1/4 NW 1/4 SECTION 22, T28S R14E, W.M. AND 50 FEET SOUTH AND 1285 FEET EAST FROM THE NW CORNER SECTION 22.
- #9 UNBUILT (PROPOSED)
LOCATED IN THE SE 1/4 SW 1/4 SECTION 15, T28S R14E, W.M. AND 80 FEET NORTH AND 2420 FEET EAST FROM THE SW CORNER SECTION 15.



RECEIVED
JAN 23 2023
OWRD
RECEIVED
FEB 21 2023
OWRD

Certified Water Right Examiner
#51324 WRE
Scott D. Montgomery
May 21, 2001
STATE OF OREGON
RENEWAL DATE: 12/31/2024

THIS MAP IS FOR THE PURPOSE OF
LOCATING A WATER RIGHT ONLY AND HAS
NO INTENT TO PROVIDE LEGAL DIMENSIONS
OR THE LOCATION OF PROPERTY LINES.