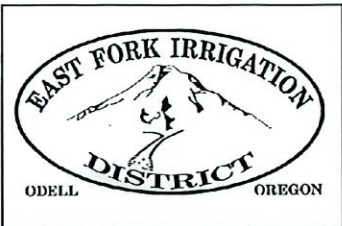


RECEIVED

OCT 03 2022

OWRD

C-92000 Maps



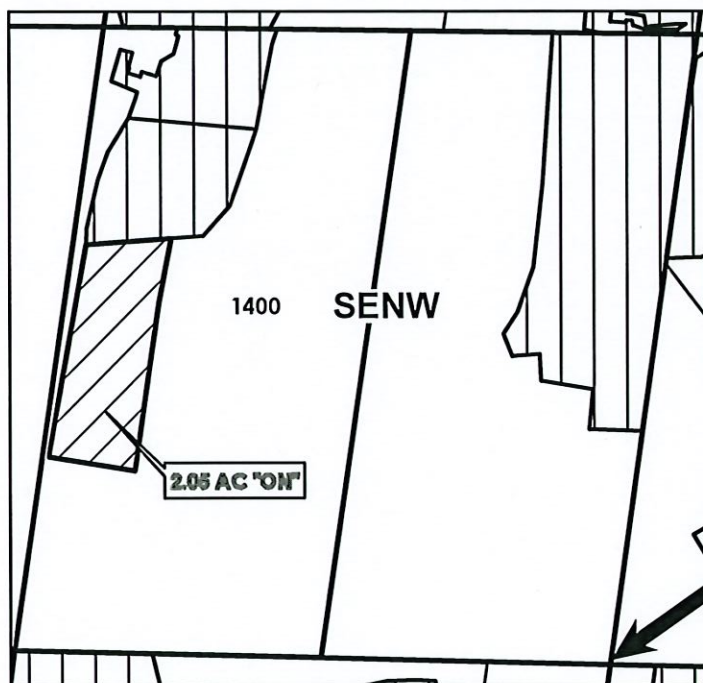
**HOOD RIVER COUNTY
SEC 03 T01N R10E
SCALE - 1" = 400'**

**RECEIVED
OCT 03 2022
OWRD**



SE 1/4 OF THE NW 1/4

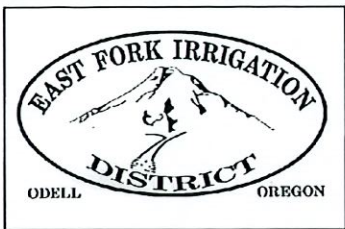
OWRD T-13284



**Cert 84803 1.70 Ac
Cert 92000 8.70 Ac**

	ON LANDS - 92000
	EXISTING WATER RIGHTS

**FINAL PROOF MAP
TO: MARGERY LOOMIS
TAX LOT: 1400 2.05 Ac**



HOOD RIVER COUNTY
SEC 03 T01N R10E
SCALE - 1" = 400'

RECEIVED

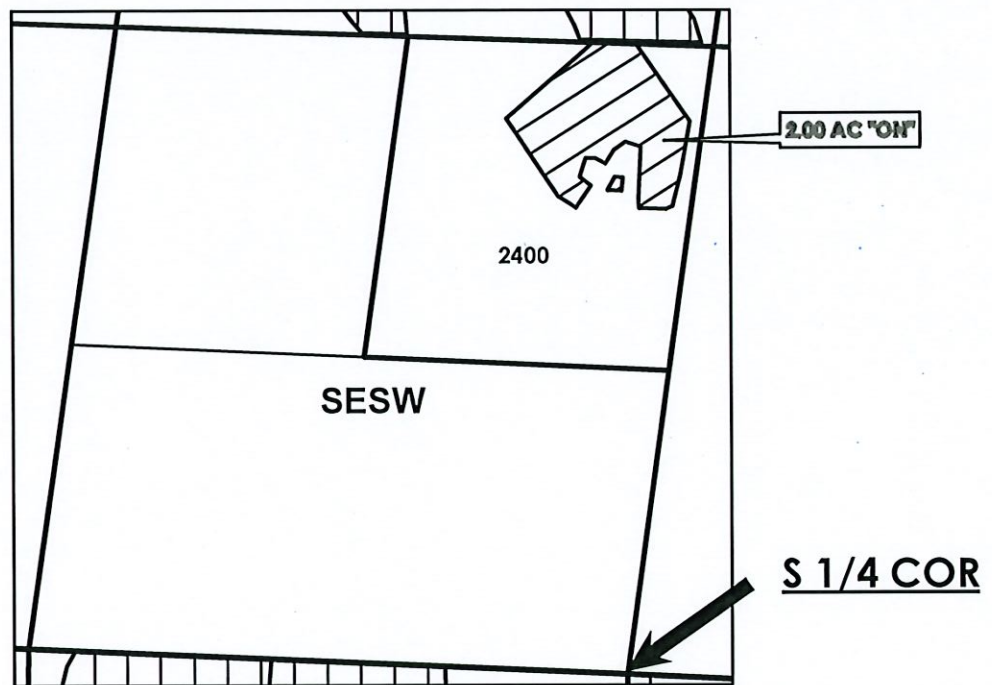
OCT 03 2022

OWRD



SE 1/4 OF THE SW 1/4

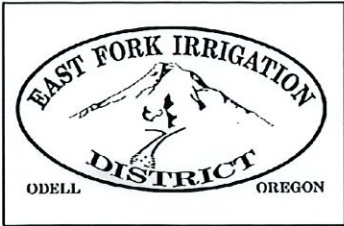
OWRD T-13284



Cert 92000 2.00 Ac

	ON LANDS - 92000
	EXISTING WATER RIGHTS

FINAL PROOF MAP
TO: LYLE'S LOG CABIN, LLC (DONALD R BALES, LYLE HENAGE)
TAX LOT: 2400 2.00 Ac



HOOD RIVER COUNTY SEC 15 T01N R10E

RECEIVED

OCT 03 2022

OWRD

SCALE - 1" = 400'

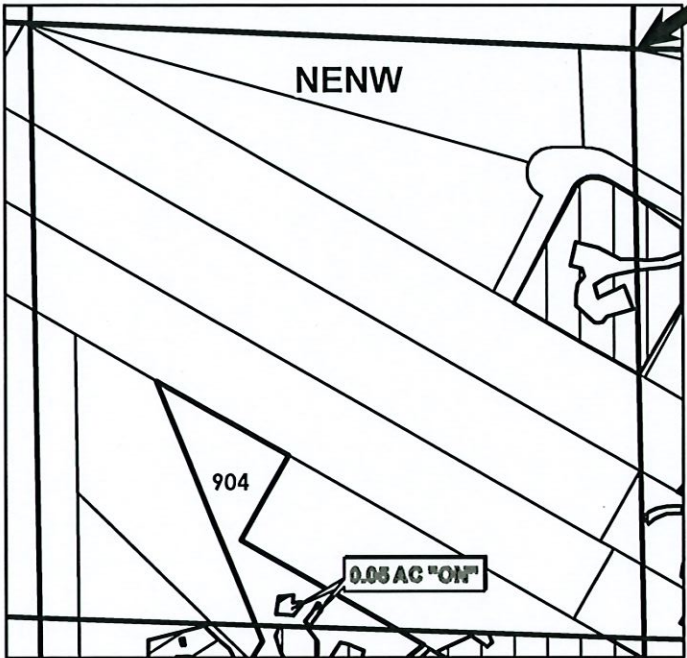
N



NE 1/4 OF THE NW 1/4

OWRD T-13284

N 1/4 COR



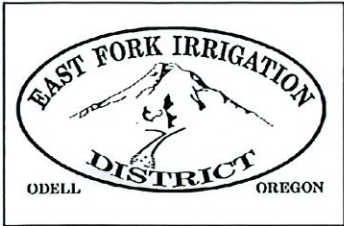
Cert 84803 1.35 Ac
Cert 92000 0.05 Ac

	ON LANDS - 92000
	EXISTING WATER RIGHTS

FINAL PROOF MAP

TO: TRISHA A. & CHARLES N. PETERSON JR.

TAX LOT: 904 0.05 Ac



**HOOD RIVER COUNTY
SEC 22 T02N R10E
SCALE - 1" = 400'**

RECEIVED

OCT 03 2022

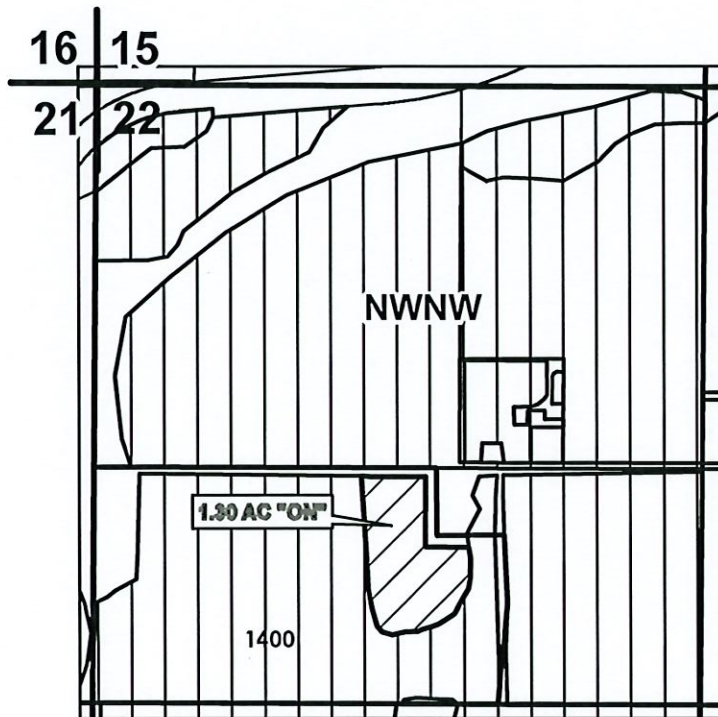
OWRD

N



NW 1/4 OF THE NW 1/4

OWRD T-13284



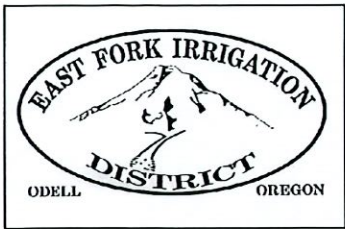
**Cert 80929 3.10 Ac
Cert 92000 31.50 Ac**

	ON LANDS - 92000
	EXISTING WATER RIGHTS

FINAL PROOF MAP

TO: KATHY M. OATES, TRUSTEE

TAX LOT: 1400 1.30 Ac



HOOD RIVER COUNTY
SEC 36 T02N R10E
SCALE - 1" = 400'

RECEIVED

OCT 03 2022

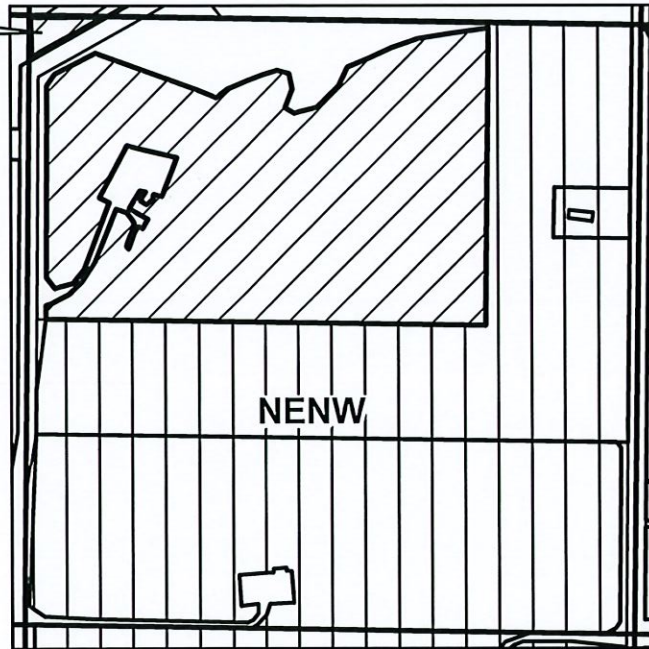
OWRD



NE 1/4 OF THE NW 1/4

OWRD T-13284

**0.15 AC "ON"
TAX LOT 1500**

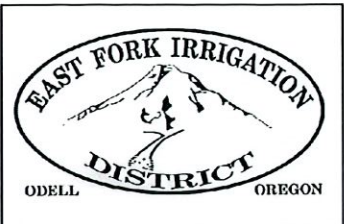


N 1/4 COR

Cert 92000 35.35 Ac

-  ON LANDS - 92000
-  EXISTING WATER RIGHTS

FINAL PROOF MAP
TO: ELK MOUNTAIN, LLC
TAX LOT: 1500 0.15 Ac



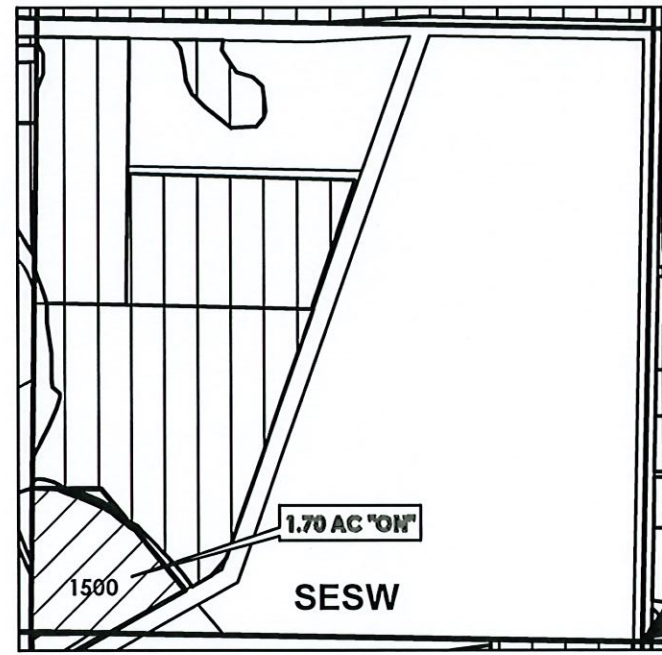
HOOD RIVER COUNTY
SEC 25 T02N R10E
SCALE - 1" = 400'

RECEIVED
OCT 03 2022
OWRD



SE 1/4 OF THE SW 1/4

OWRD T-13284

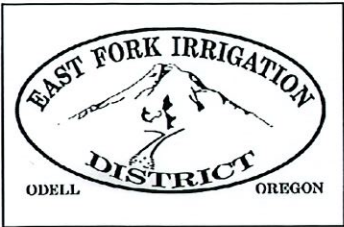


S 1/4 COR

Cert 92000 1.70 Ac
Cert 80929 11.50 Ac

	ON LANDS - 92000
	EXISTING WATER RIGHTS

FINAL PROOF MAP
TO: ELK MOUNTAIN, LLC
TAX LOT: 1500 1.70 Ac



**HOOD RIVER COUNTY
SEC 25 T02N R10E
SCALE - 1" = 400'**

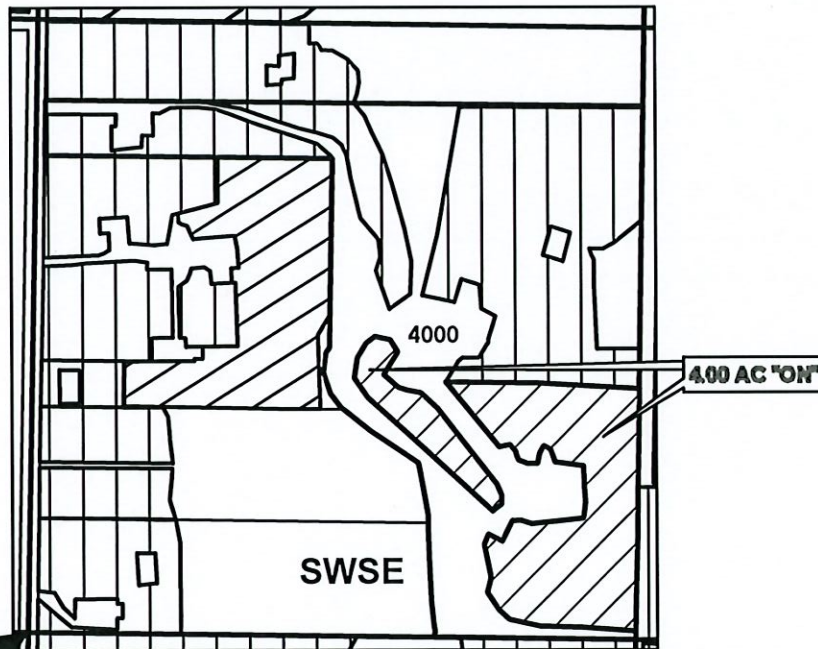
**RECEIVED
OCT 03 2022**

OWRD



SW 1/4 OF THE SE 1/4

OWRD T-13284

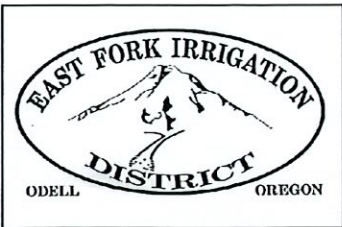


S 1/4 COR

Cert 92000 23.30 Ac

	ON LANDS - 92000
	EXISTING WATER RIGHTS

**FINAL PROOF MAP
TO: JEFFREY & JACQUELINE OSBORN
TAX LOT: 4000 4.00 Ac**



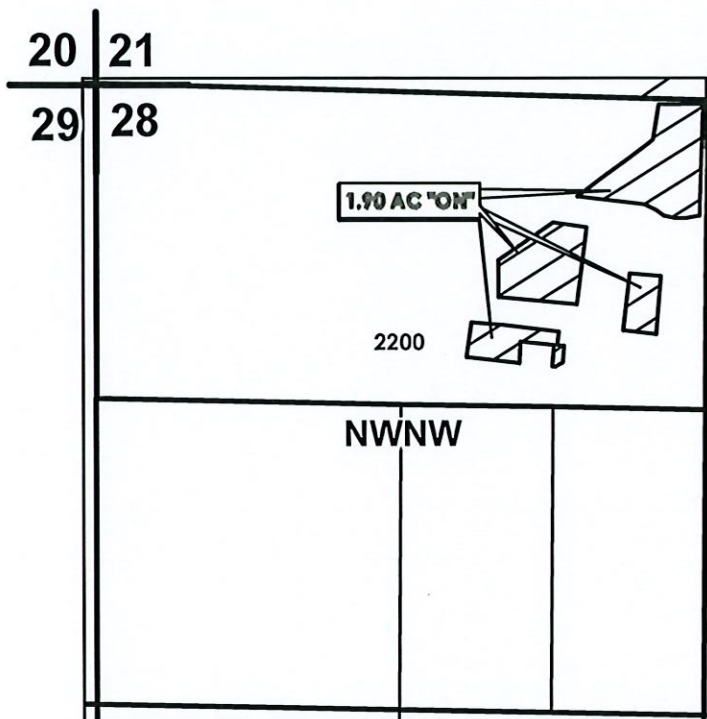
HOOD RIVER COUNTY
SEC 28 T02N R10E
SCALE - 1" = 400'

RECEIVED
OCT 03 2022
OWRD



NW 1/4 OF THE NW 1/4

OWRD T-13284

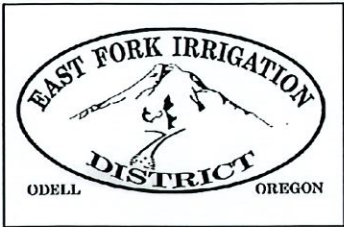


Cert 92000 1.90 Ac

	ON LANDS - 92000
	EXISTING WATER RIGHTS

FINAL PROOF MAP
TO: YBARRA
TAX LOT: 2200 1.90 Ac

FILE: TRANSFERS\FINAL_PROOF\2019_01_T13284_02N10E28_TL2200_YBARRA



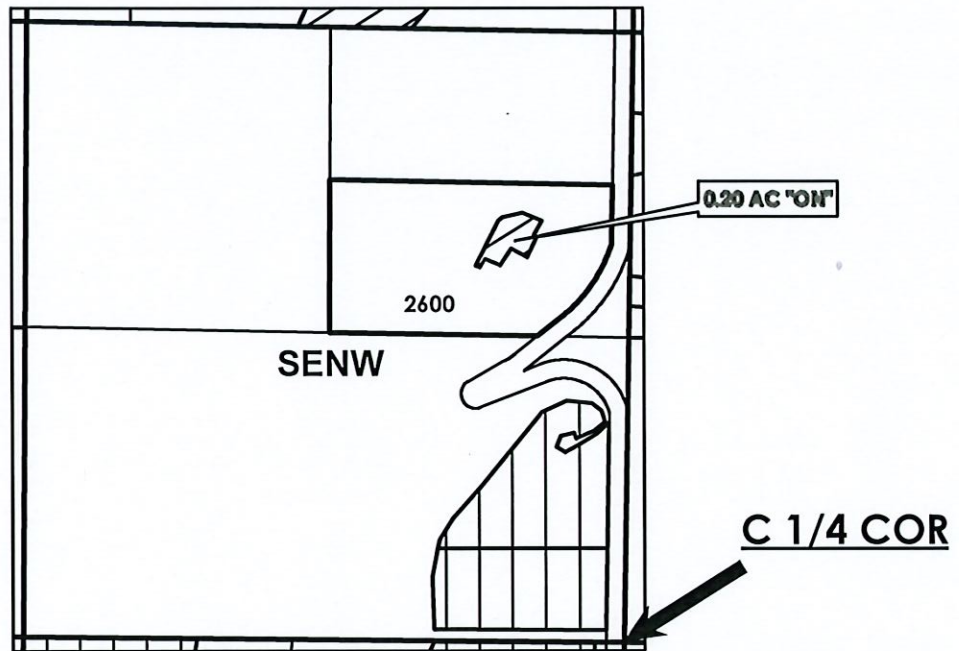
HOOD RIVER COUNTY
SEC 28 T02N R10E
SCALE - 1" = 400'

RECEIVED
OCT 03 2022
OWRD



SE 1/4 OF THE NW 1/4

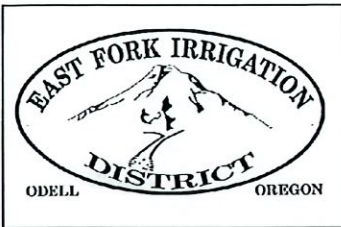
OWRD T-13284



Cert 92000 0.20 Ac
Cert 84803 1.70 Ac
Cert 84802 1.50 Ac

	ON LANDS - 92000
	EXISTING WATER RIGHTS

FINAL PROOF MAP
TO: *SMITH, COTA
TAX LOT: 2600 0.20 Ac



HOOD RIVER COUNTY SEC 29 T02N R10E SCALE - 1" = 400'

RECEIVED

OCT 03 2022

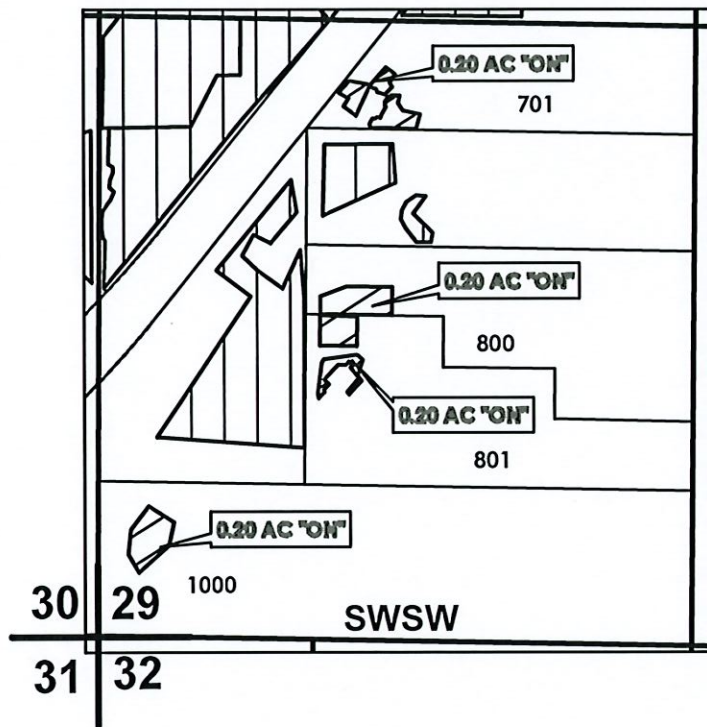
OWRD

N





SW 1/4 OF THE SW 1/4

OWRD T-13284



Cert 92000 2.70 Ac
 Cert 84803 3.80 Ac

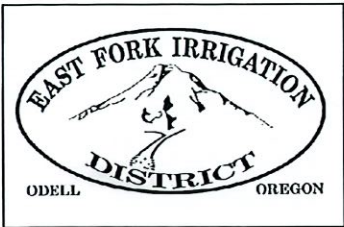
 ON LANDS - 92000
 EXISTING WATER RIGHTS

FINAL PROOF MAP

TO: L JONES, *BURTON, *MOORE/CROCKET

TAX LOTS: 701, 800, 801, 1000 0.80 Ac (0.20 Each)

FILE: TRANSFERS\FINAL_PROOF\2019_01_T13284_02N10E29_TL701_800_801_1000_JONES_BURTON_MOORE_CROCKET



**HOOD RIVER COUNTY
SEC 29 T02N R10E
SCALE - 1" = 400'**

RECEIVED

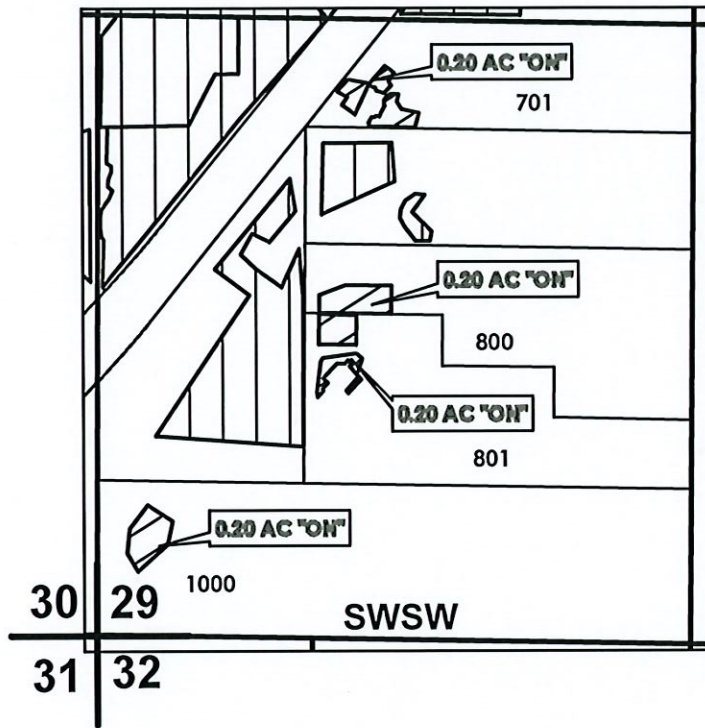
OCT 03 2022

OWRD



SW 1/4 OF THE SW 1/4

OWRD T-13284



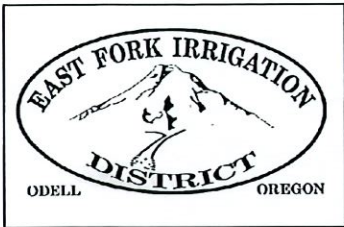
Cert 92000 2.70 Ac
Cert 84803 3.80 Ac

	ON LANDS - 92000
	EXISTING WATER RIGHTS

FINAL PROOF MAP

TO: L JONES, *BURTON, *MOORE/CROCKET

TAX LOTS: 701, 800, 801, 1000 0.80 Ac (0.20 Each)



HOOD RIVER COUNTY
SEC 29 T02N R10E
SCALE - 1" = 400'

RECEIVED

OCT 03 2022

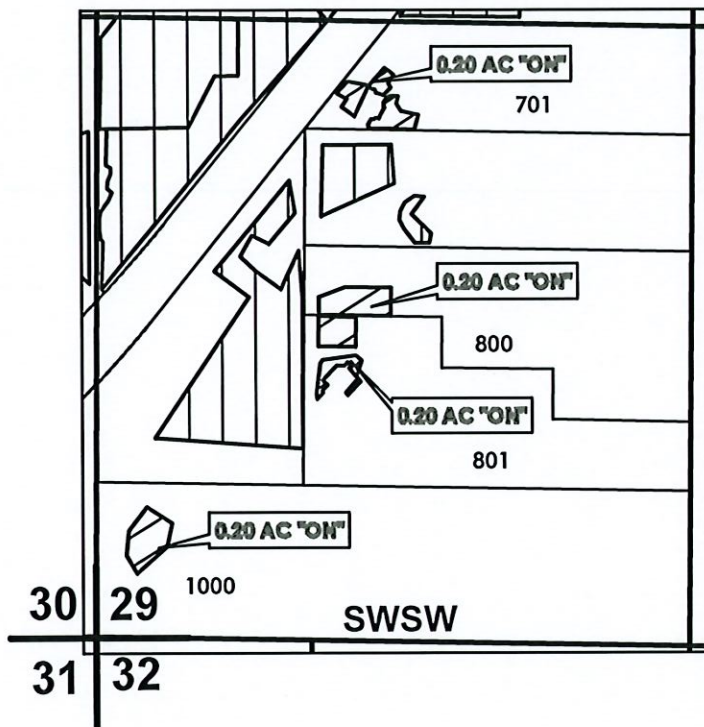
OWRD

N



SW 1/4 OF THE SW 1/4

OWRD T-13284



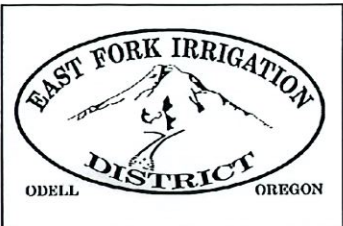
Cert 92000 2.70 Ac
Cert 84803 3.80 Ac

	ON LANDS - 92000
	EXISTING WATER RIGHTS

FINAL PROOF MAP

TO: L JONES, *BURTON, *MOORE/CROCKET

TAX LOTS: 701, 800, 801, 1000 0.80 Ac (0.20 Each)



HOOD RIVER COUNTY SEC 29 T02N R10E

SCALE - 1" = 400'

N



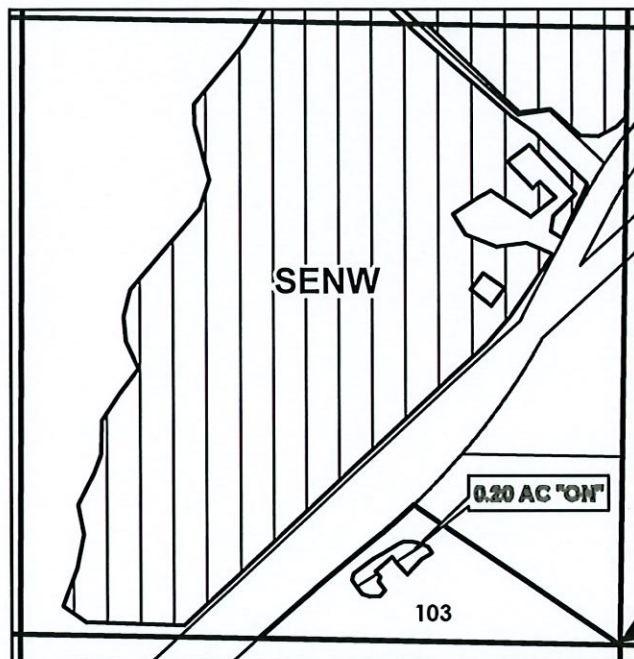
SE 1/4 OF THE NW 1/4

RECEIVED

OCT 03 2022

OWRD

OWRD T-13284



C 1/4 COR

Cert 92000 19.80 Ac

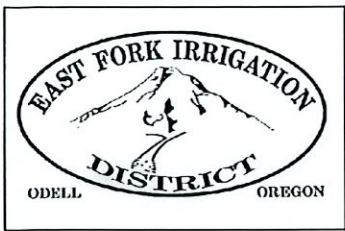
	ON LANDS - 92000
	EXISTING WATER RIGHTS

FINAL PROOF MAP

TO: NAJERA-CERVANTES

TAX LOT: 103

0.20 ACRE



HOOD RIVER COUNTY SEC 30 T02N R10E

RECEIVED

OCT 03 2022

OWRD

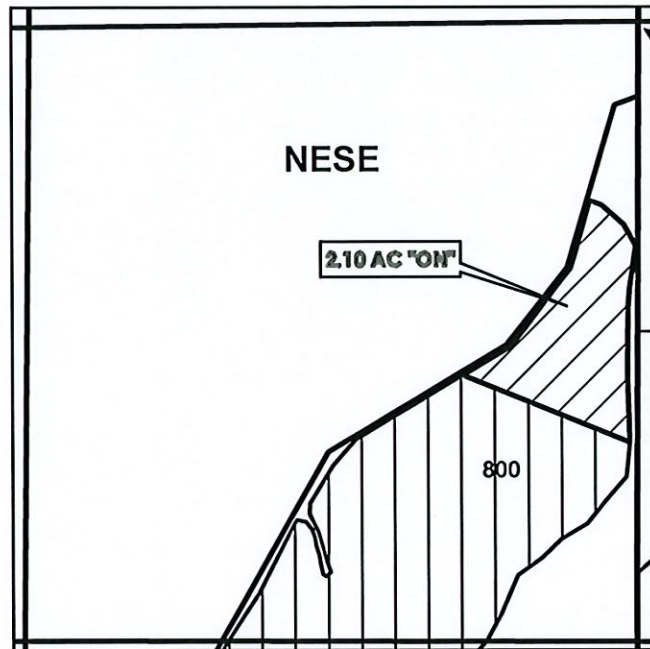
SCALE - 1" = 400'

N



NE 1/4 OF THE SE 1/4

OWRD T-13284



E 1/4 COR

Cert 92000 8.90 Ac



ON LANDS - 92000



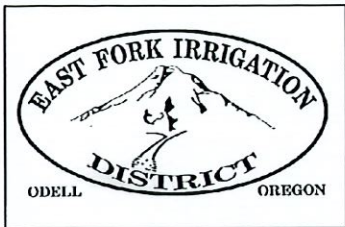
EXISTING WATER RIGHTS

FINAL PROOF MAP

TO: JEFFREY & JODI JONES

TAX LOT: 800

2.10 Ac



HOOD RIVER COUNTY SEC 36 T02N R10E SCALE - 1" = 400'

RECEIVED

OCT 03 2022

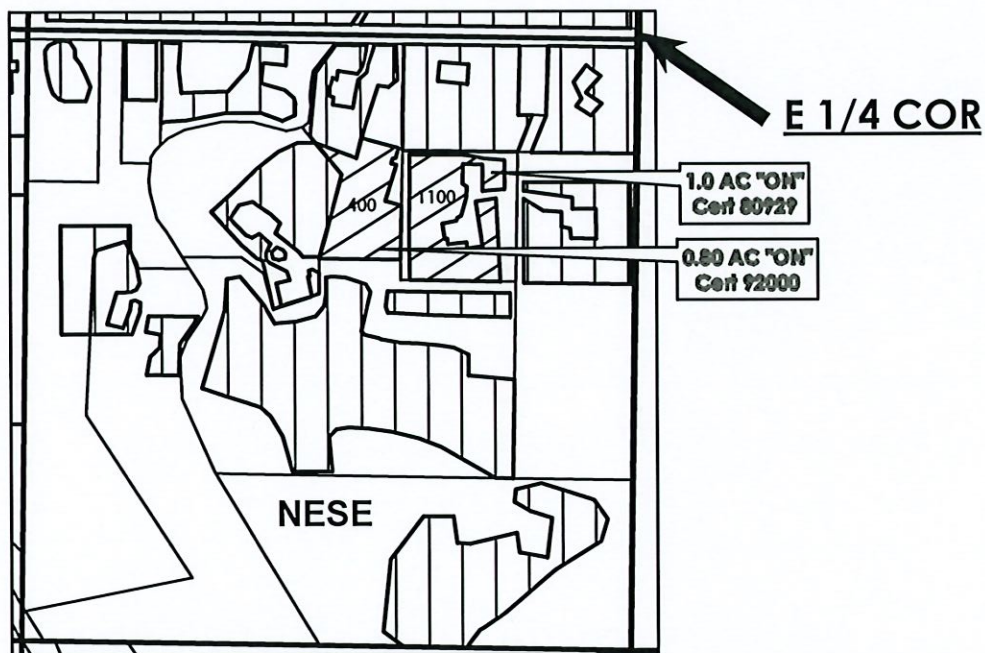
OWRD

N



NE 1/4 OF THE SE 1/4

OWRD T-13284



Cert 92000	1.60 Ac
Cert 80929	9.10 Ac
Cert 84803	4.00 Ac

	ON LANDS - 92000 & 80929
	EXISTING WATER RIGHTS

FINAL PROOF MAP

TO: CYNTHIA E. SNAPP TAX LOT: 1100 1.00 Ac/80929

TO: CELERION VALLE-GUZEMAN TAX LOT: 400 0.80 Ac/92000



HOOD RIVER COUNTY SEC 18 T02N R11E

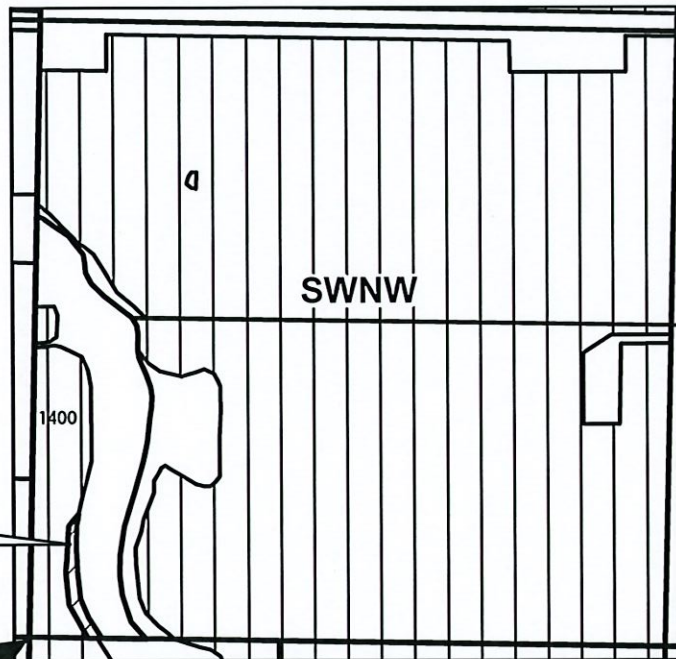
RECEIVED
OCT 03 2022
OWRD

SCALE - 1" = 400'



SW 1/4 OF THE NW 1/4

OWRD T-13284



W 1/4 COR →

Cert 92000 35.95 Ac

-  ON LANDS - 92000
-  EXISTING WATER RIGHTS

FINAL PROOF MAP

TO: WILLIS FAMILY, INC. TAX LOT: 1400 0.15 ACRE

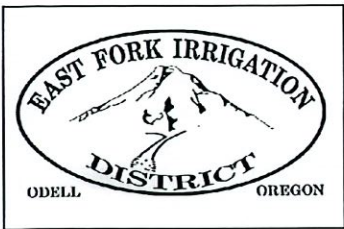
RECEIVED

OCT 03 2022

OWRD

C-80929

Maps



HOOD RIVER COUNTY
SEC 22 T01N R10E
SCALE - 1" = 400'

RECEIVED

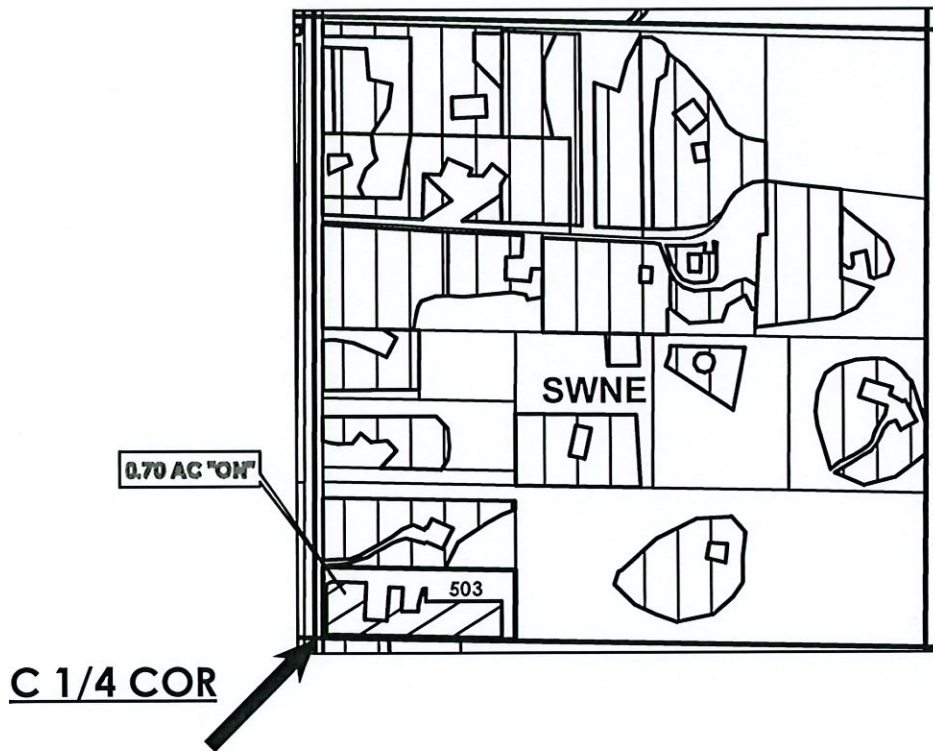
OCT 03 2022

OWRD



SW 1/4 OF THE NE 1/4

OWRD T-13284



- Cert 92000 1.00 Ac
- Cert 88094 8.80 Ac
- Cert 80929 3.60 Ac
- Cert 80927 5.00 Ac
- Cert 84803 0.30 Ac

	ON LANDS - 80929
	EXISTING WATER RIGHTS

FINAL PROOF MAP

TO: * RONALD R BELIEL JR & TIFFANY A. DUNLAP

TAX LOT: 503 0.70 Ac



HOOD RIVER COUNTY SEC 26 T02N R10E

SCALE - 1" = 400'

N



SW 1/4 OF THE NW 1/4

RECEIVED

OCT 03 2022

OWRD

OWRD T-13284




0.15 AC "ON"
Tax Lot 4300

SWNW

W 1/4 COR

Cert 92000 6.96 Ac
Cert 84803 2.35 Ac
Cert 80929 0.15 Ac

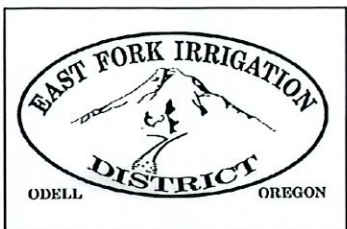
 ON LANDS - 80929
 EXISTING WATER RIGHTS

FINAL PROOF MAP

TO: TODD & TENILLE HILTON

TAX LOT: 4300

0.15 ACRE



HOOD RIVER COUNTY SEC 36 T02N R10E

RECEIVED

OCT 03 2022

OWRD

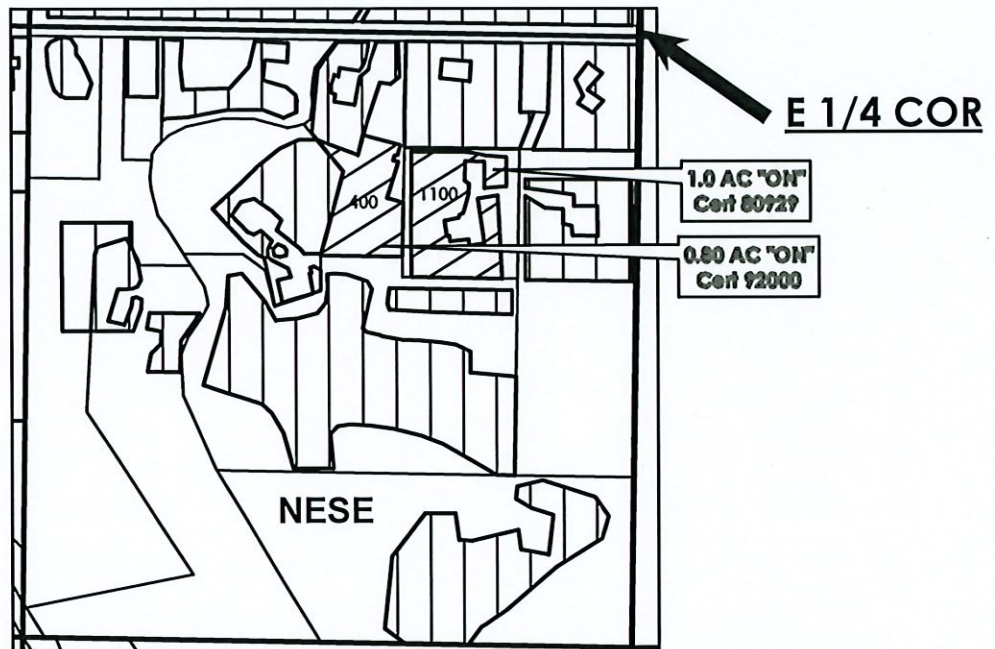
SCALE - 1" = 400'

N



NE 1/4 OF THE SE 1/4

OWRD T-13284



Cert 92000	1.60 Ac
Cert 80929	9.10 Ac
Cert 84803	4.00 Ac

	ON LANDS - 92000 & 80929
	EXISTING WATER RIGHTS

FINAL PROOF MAP

TO: CYNTHIA E. SNAPP TAX LOT: 1100 1.00 Ac/80929

TO: CELERION VALLE-GUZEMAN TAX LOT: 400 0.80 Ac/92000

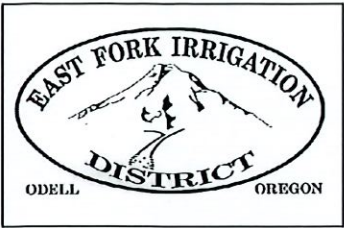
RECEIVED

OCT 03 2022

OWRD

C-80928

Maps



**HOOD RIVER COUNTY
SEC 06 T01N R11E**

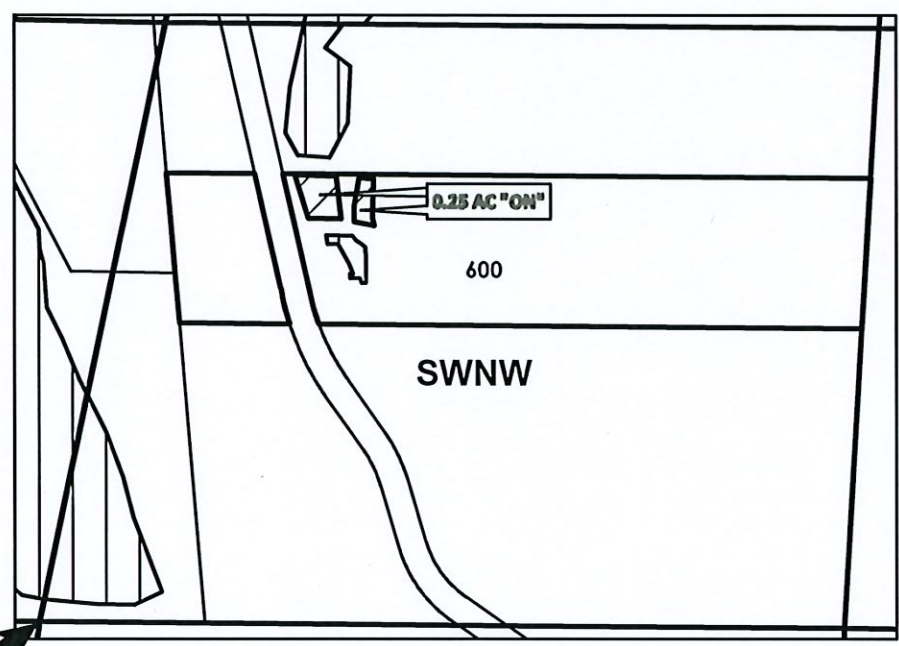
**RECEIVED
OCT 03 2022
OWRD**

SCALE - 1" = 400'



SW 1/4 OF THE NW 1/4

OWRD T-13284



Cert 92000 2.10 Ac
Cert 84803 0.10 Ac
Cert 80928 0.25 Ac

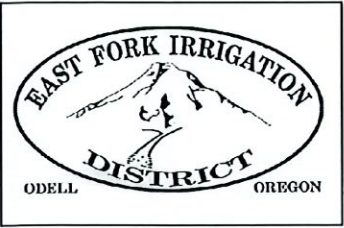
	ON LANDS - 80929
	EXISTING WATER RIGHTS

FINAL PROOF MAP

TO: IAN McNAUGHTON & LAURIE KAVANAUGH

TAX LOT: 600

0.25 ACRE



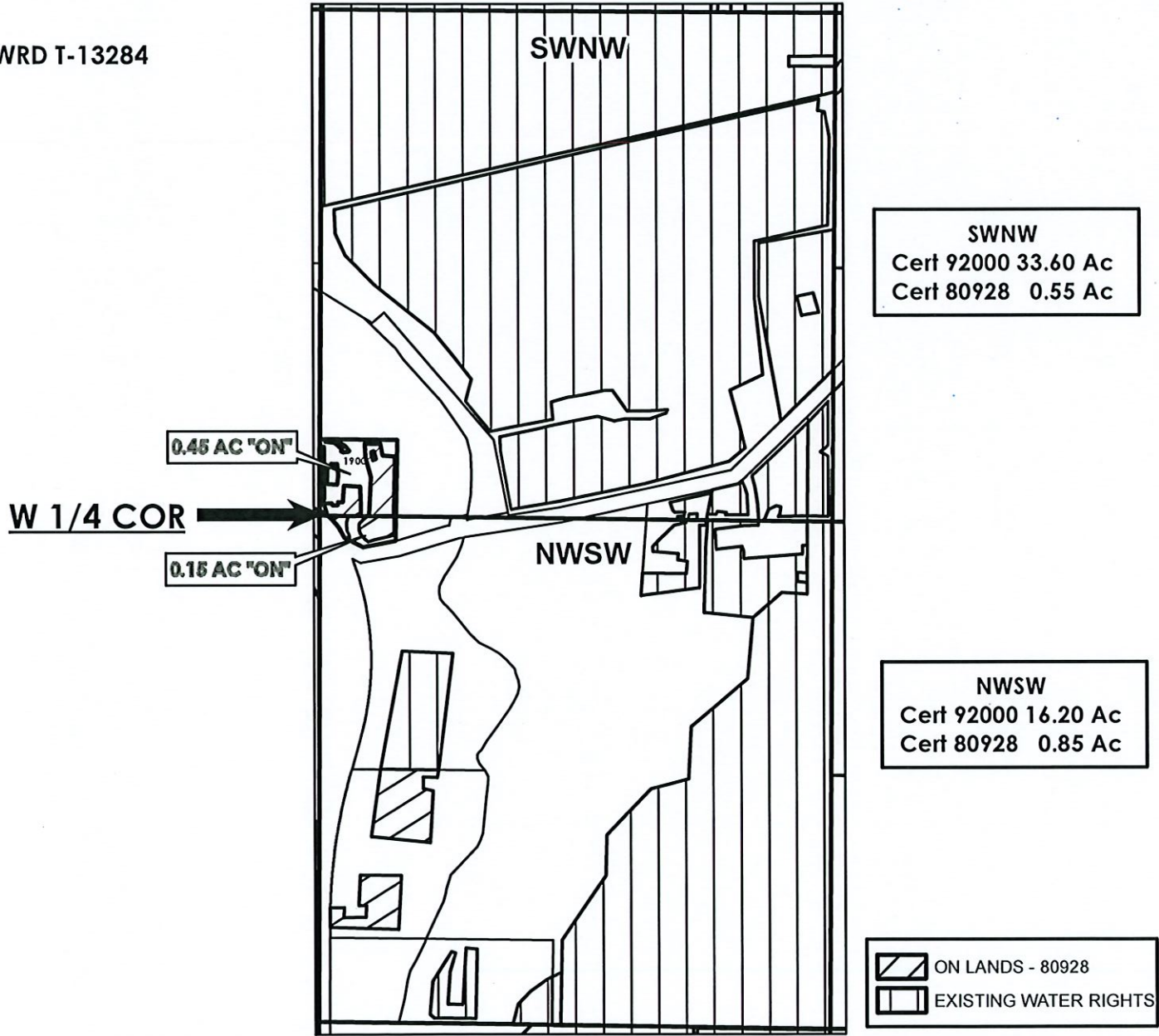
HOOD RIVER COUNTY
SEC 23 T02N R10E
SCALE - 1" = 400'

RECEIVED
OCT 03 2022
OWRD



SW 1/4 OF THE NW 1/4 & NW 1/4 OF THE SW 1/4

OWRD T-13284



FINAL PROOF MAP

TO: DONALD L & MERRYANN MOORE
TAX LOT: 1900 0.60 ACRE

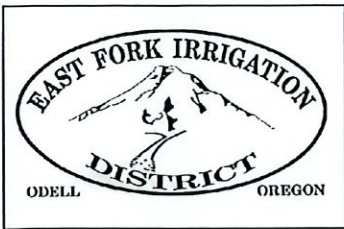
RECEIVED

OCT 03 2022

OWRD

C-84803

Maps



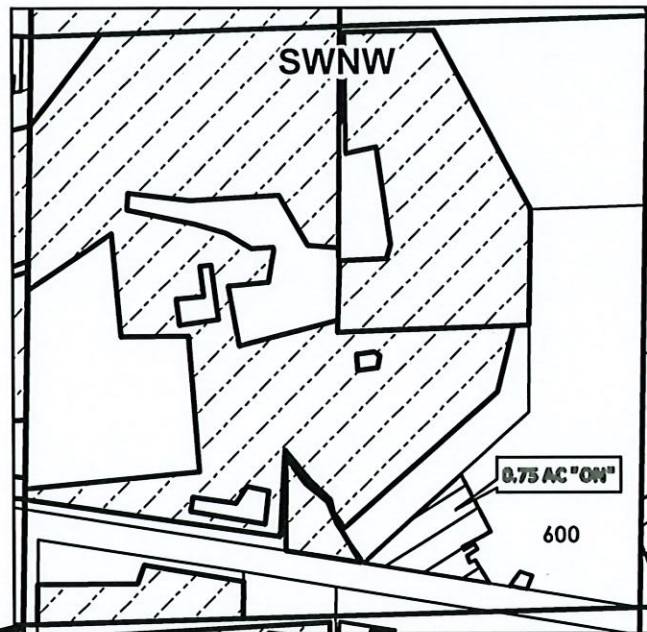
HOOD RIVER COUNTY
SEC 11 T01N R10E
SCALE - 1" = 400'

RECEIVED
OCT 03 2022
OWRD



SW 1/4 OF THE NW 1/4

OWRD T-13284

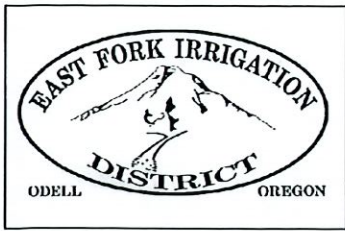


W 1/4 COR

Cert 92000 11.90 Ac eq IM
Cert 84803 0.75 Ac

- ON LANDS - 84803
- INDUSTRIAL WATER RIGHTS

FINAL PROOF MAP
TO: TOBIAS AMMON & ERIKA SANTACROCE
TAX LOT: 600 **0.75 ACRE**



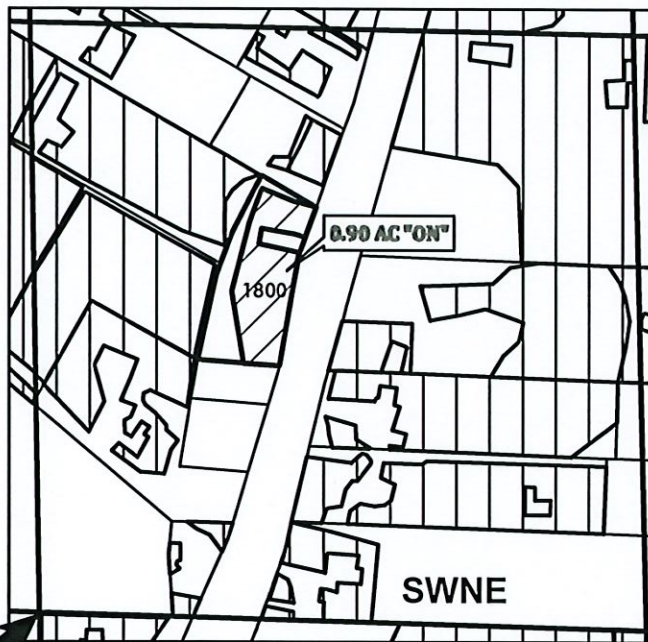
**HOOD RIVER COUNTY
SEC 15 T01N R10E
SCALE - 1" = 400'**

**RECEIVED
OCT 03 2022
OWRD**



SW 1/4 OF THE NE 1/4

OWRD T-13284

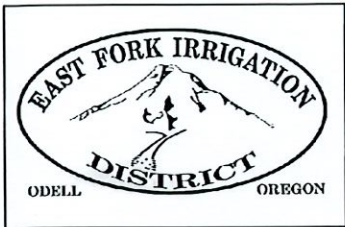


C 1/4 COR

**Cert 84803 1.90 Ac
Cert 92000 16.45 Ac**

	ON LANDS - 84803
	EXISTING WATER RIGHTS

**FINAL PROOF MAP
TO: ELIZABETH CARABANTES PEREZ
TAX LOT: 1800 0.90 Ac**



HOOD RIVER COUNTY SEC 29 T02N R10E

RECEIVED
OCT 03 2022
OWRD

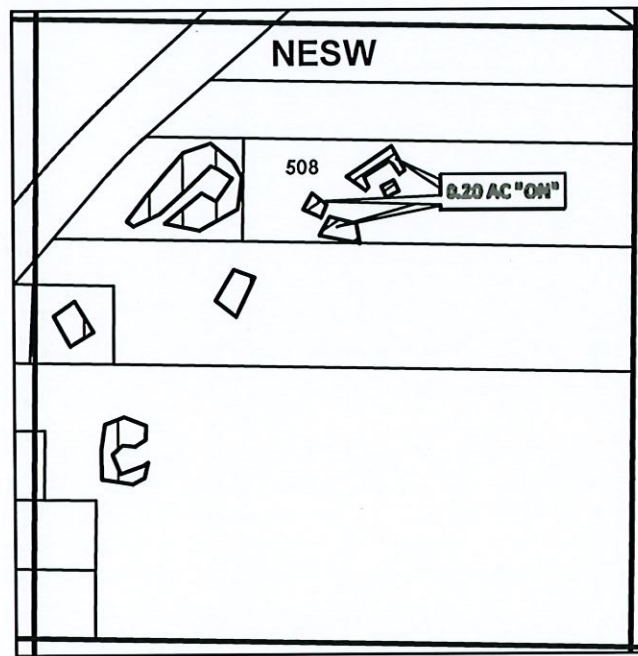
SCALE - 1" = 400'

N



NE 1/4 OF THE SW 1/4

OWRD T-13284



C 1/4 COR

Cert 84803 1.10 Ac



ON LANDS - 84803

EXISTING WATER RIGHTS

FINAL PROOF MAP

TO: DAVID & JACQUELINE HECK

TAX LOT: 508

0.20 ACRE