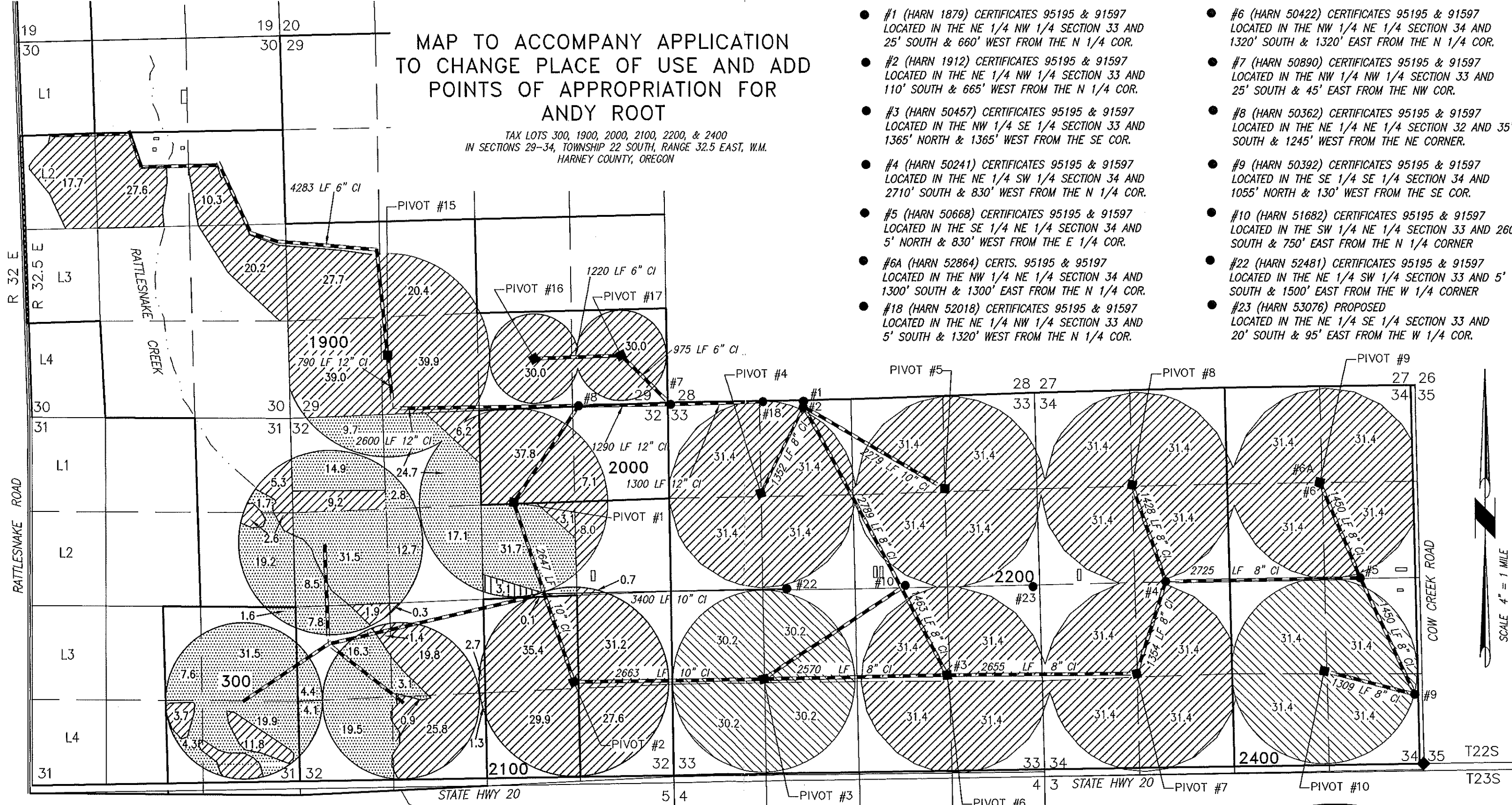


MAP TO ACCOMPANY APPLICATION TO CHANGE PLACE OF USE AND ADD POINTS OF APPROPRIATION FOR ANDY ROOT

TAX LOTS 300, 1900, 2000, 2100, 2200, & 2400
IN SECTIONS 29-34, TOWNSHIP 22 SOUTH, RANGE 32.5 EAST, W.M.
HARNEY COUNTY, OREGON



- #1 (HARN 1879) CERTIFICATES 95195 & 91597 LOCATED IN THE NE 1/4 NW 1/4 SECTION 33 AND 25' SOUTH & 660' WEST FROM THE N 1/4 COR.
- #2 (HARN 1912) CERTIFICATES 95195 & 91597 LOCATED IN THE NE 1/4 NW 1/4 SECTION 33 AND 110' SOUTH & 665' WEST FROM THE N 1/4 COR.
- #3 (HARN 50457) CERTIFICATES 95195 & 91597 LOCATED IN THE NW 1/4 SE 1/4 SECTION 33 AND 1365' NORTH & 1365' WEST FROM THE SE COR.
- #4 (HARN 50241) CERTIFICATES 95195 & 91597 LOCATED IN THE NE 1/4 SW 1/4 SECTION 34 AND 2710' SOUTH & 830' WEST FROM THE N 1/4 COR.
- #5 (HARN 50668) CERTIFICATES 95195 & 91597 LOCATED IN THE SE 1/4 NE 1/4 SECTION 34 AND 5' NORTH & 830' WEST FROM THE E 1/4 COR.
- #6A (HARN 52864) CERTS. 95195 & 95197 LOCATED IN THE NW 1/4 NE 1/4 SECTION 34 AND 1300' SOUTH & 1300' EAST FROM THE N 1/4 COR.
- #18 (HARN 52018) CERTIFICATES 95195 & 91597 LOCATED IN THE NE 1/4 NW 1/4 SECTION 33 AND 5' SOUTH & 1320' WEST FROM THE N 1/4 COR.
- #6 (HARN 50422) CERTIFICATES 95195 & 91597 LOCATED IN THE NW 1/4 NE 1/4 SECTION 34 AND 1320' SOUTH & 1320' EAST FROM THE N 1/4 COR.
- #7 (HARN 50890) CERTIFICATES 95195 & 91597 LOCATED IN THE NW 1/4 NW 1/4 SECTION 33 AND 25' SOUTH & 45' EAST FROM THE NW COR.
- #8 (HARN 50362) CERTIFICATES 95195 & 91597 LOCATED IN THE NE 1/4 NE 1/4 SECTION 32 AND 35' SOUTH & 1245' WEST FROM THE NE CORNER.
- #9 (HARN 50392) CERTIFICATES 95195 & 91597 LOCATED IN THE SE 1/4 SE 1/4 SECTION 34 AND 1055' NORTH & 130' WEST FROM THE SE COR.
- #10 (HARN 51682) CERTIFICATES 95195 & 91597 LOCATED IN THE SW 1/4 NE 1/4 SECTION 33 AND 2605' SOUTH & 750' EAST FROM THE N 1/4 CORNER
- #22 (HARN 52481) CERTIFICATES 95195 & 91597 LOCATED IN THE NE 1/4 SW 1/4 SECTION 33 AND 5' SOUTH & 1500' EAST FROM THE W 1/4 CORNER
- #23 (HARN 53076) PROPOSED LOCATED IN THE NE 1/4 SE 1/4 SECTION 33 AND 20' SOUTH & 95' EAST FROM THE W 1/4 COR.

PROJECT No. 23-048
PREPARED AT THE REQUEST OF:
ANDY ROOT
524 HIGHWAY 20 N
HINES, OR 97738

**ALL POINTS ENGINEERING
& SURVEYING, INC.**
P.O. BOX 767
TERREBONNE, OREGON 97760
(541) 548-5833 PH
Scott@APEandS.com
www.APEandS.com

- BURIED STEEL PIPE
- ▨ 1292.4 ACRES IR FROM CERTIFICATE 95195 REMAIN, AS SHOWN.
- ▤ 295.5 ACRES IS FROM CERTIFICATE 95195 REMAIN, AS SHOWN.
- ▩ 246.4 ACRES IR FROM CERTIFICATE 95197 REMAIN, AS SHOWN.

RECEIVED
MAY 01 2023
OWRD
Certified Water Right Examiner
#51324 WRE
Scott D. Montgomery
May 21, 2001
STATE OF OREGON
RENEWAL DATE: 12/31/2024
THIS MAP IS FOR THE PURPOSE OF LOCATING A WATER RIGHT ONLY AND HAS NO INTENT TO PROVIDE LEGAL DIMENSIONS OR THE LOCATION OF PROPERTY LINES