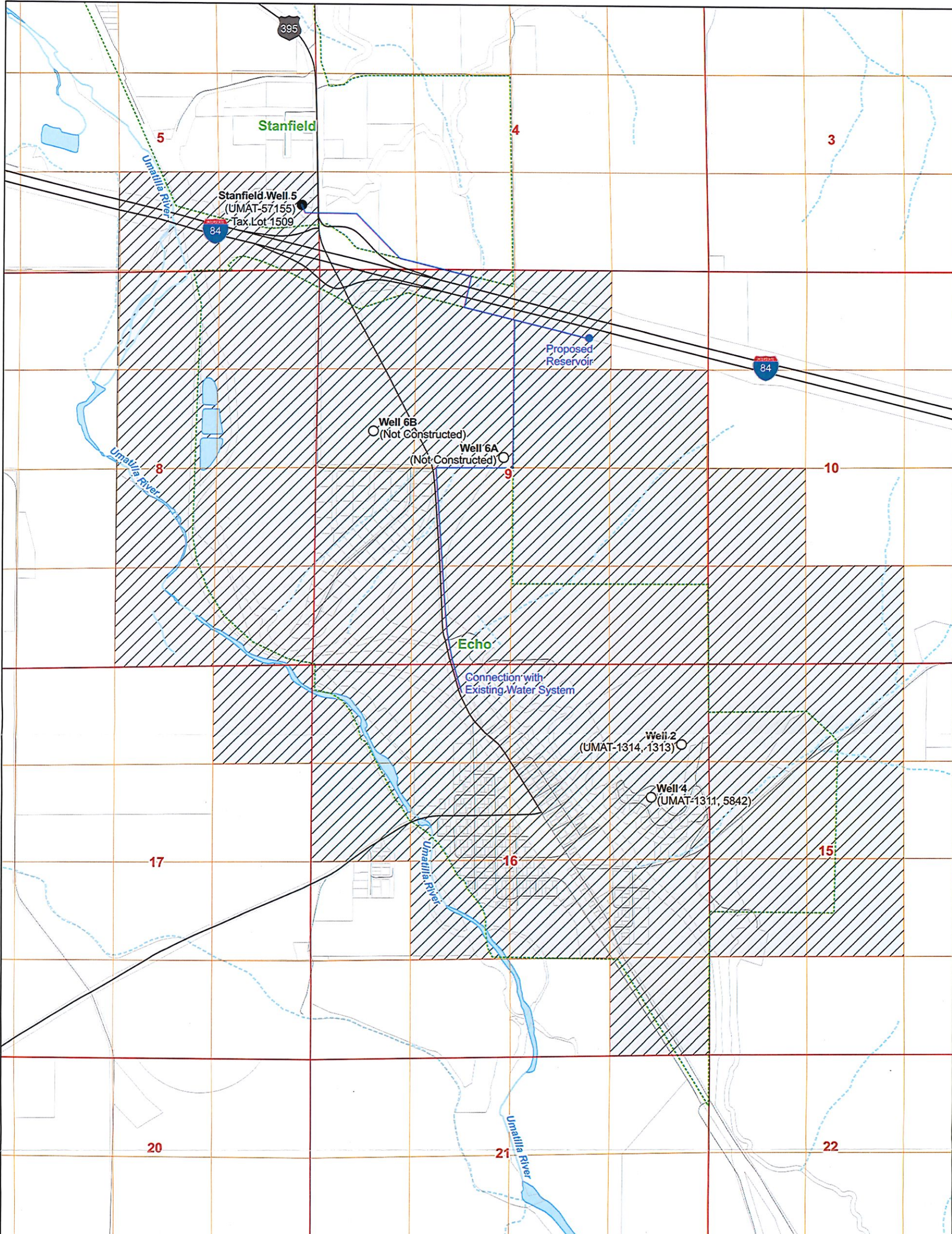


Application for a Permit Amendment

Permit G-18545, Application G-8865

A Water Right held by the City of Echo
Township 3 North, Range 29 East, (W.M.)



LEGEND

- Authorized Point of Appropriation (POA)
- Additional POA
- ▨ Authorized Place of Use (POU)
- ▭ Urban Growth Boundary
- ▭ Property Lines
- ▭ Sections
- ▭ Quarter Sections
- ~ Surface Water
- ~ Major Road
- ~ Mainline (Approximate)

POA Location Descriptions

Well 2 (UMAT-1314, 1313):
Located south 17 degrees 41 minutes 8 seconds, west 1,146 feet from NE corner, Section 16, Township 3N, Range 29E (W.M.)

Well 4 (UMAT-1311, 5842):
Located south 22 degrees 2 minutes 29 seconds, west 1,959 feet from NE corner, Section 16, Township 3N, Range 29E (W.M.)

Well 6A (Not Constructed):
Located 2,530 feet south and 2,510 feet east from the NW corner of Section 9, Township 3N, Range 29E (W.M.)

Well 6B (Not Constructed):
Located 2,155 feet south and 765 feet east from the NW corner of Section 9, Township 3N, Range 29E (W.M.)

Stanfield Well 5 (UMAT-57155):
Located 877 feet north and 233 feet west from the SW corner of Section 5, Township 3N, Range 29E (W.M.)

Date: 5/17/2023
Data Sources: OWRD, USGS, BLM, Umatilla County
Disclaimer: This map was prepared for the purpose of identifying the location of a water right only and is not intended to provide legal dimensions or location of property ownership lines.

N



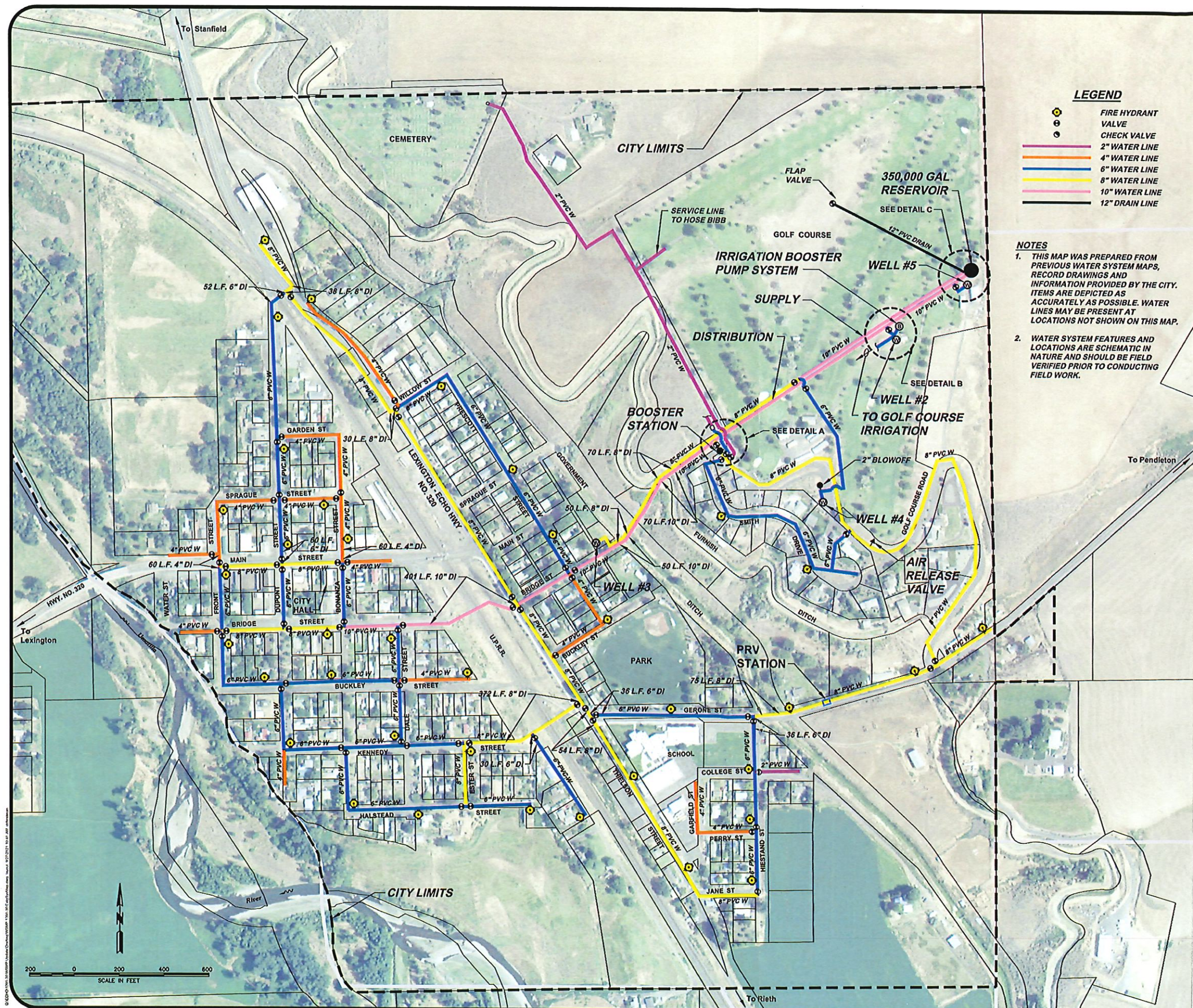
Scale
0 660 1,320 ft
1-inch = 1,320 feet

RECEIVED

JUN 30 2023

OWRD



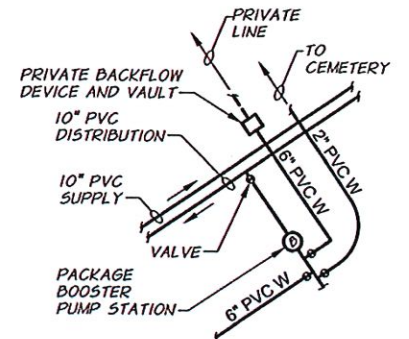


LEGEND

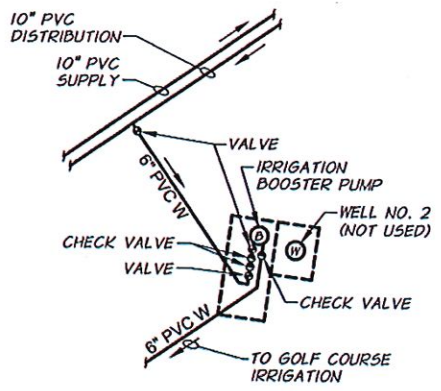
- FIRE HYDRANT
- VALVE
- CHECK VALVE
- 2" WATER LINE
- 4" WATER LINE
- 6" WATER LINE
- 8" WATER LINE
- 10" WATER LINE
- 12" DRAIN LINE

NOTES

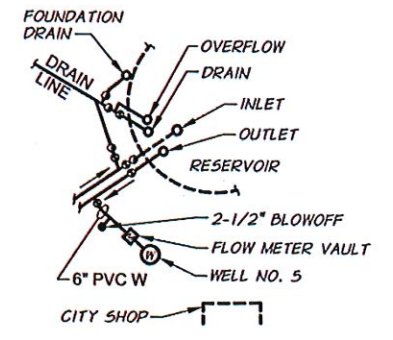
1. THIS MAP WAS PREPARED FROM PREVIOUS WATER SYSTEM MAPS, RECORD DRAWINGS AND INFORMATION PROVIDED BY THE CITY. ITEMS ARE DEPICTED AS ACCURATELY AS POSSIBLE. WATER LINES MAY BE PRESENT AT LOCATIONS NOT SHOWN ON THIS MAP.
2. WATER SYSTEM FEATURES AND LOCATIONS ARE SCHEMATIC IN NATURE AND SHOULD BE FIELD VERIFIED PRIOR TO CONDUCTING FIELD WORK.



DETAIL A
N.T.S.



DETAIL B
N.T.S.



DETAIL C
N.T.S.

CITY OF ECHO, OREGON
EXISTING WATER SYSTEM MAP

SEPTEMBER 2021



1901 N. Fr Street - La Grande, OR 97850 Ph: (541) 963-8309 Fax: (541) 963-5456
LA GRANDE, OR WALLA WALLA, WA REDMOND, OR HERMISTON, OR

RECEIVED
JUN 30 2023
OWRD