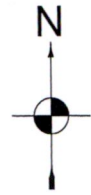
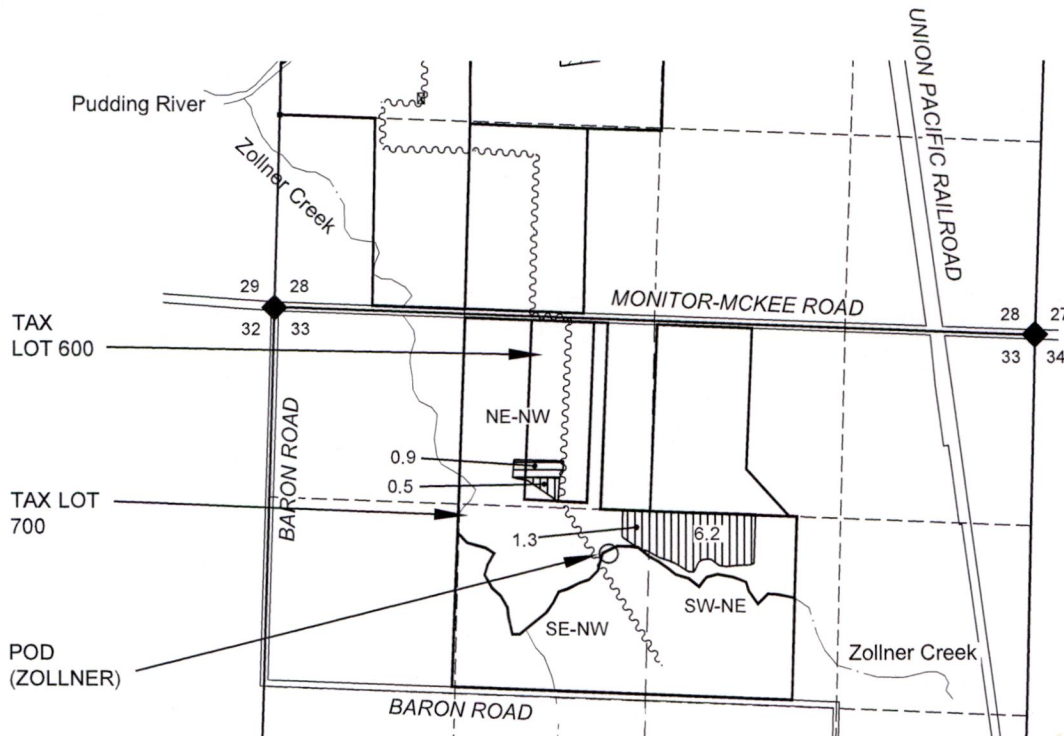


Transfer FROM Map

Section 33, T5S, R1W, Marion County
Certificate 75776



1 IN = 1320 FT
0 660 1320



RECEIVED

JUL 24 2023

OWRD

LOCATION OF POINT OF DIVERSION (POD):

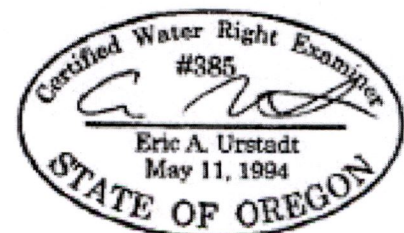
POD (ZOLLNER) IS 1630' SOUTH AND 2340' EAST OF NW S33 (PER CERT. 87974)

NOTES:

- THIS MAP IS NOT INTENDED TO PROVIDE LEGAL DIMENSIONS OR LOCATIONS OF PROPERTY OWNERSHIP LINES.
- PROPERTY LINES AND QUARTER-QUARTER LINES ARE BASED ON THE TAX ASSESSOR MAP FOR SECTION 33, T5S, R1W.
- THE BASIS OF THIS MAP IS A MAP FROM THE FILE OF T-7335 THAT SHOWS WHICH ACRES WERE CANCELLED, MOVED AND REMAINED FROM CERTIFICATE 22402 IN THAT TRANSFER.

LEGEND

- ◆ DONATION LAND CLAIM (DLC) CORNER
- ◆ SECTION CORNER
- POINT OF DIVERSION OR APPROPRIATION
- STREAM OR SURFACE DRAINAGE
- TAX LOT LINE
- SECTION LINE
- QUARTER-QUARTER LINE
- DLC LINES (NONE)
- CONVEYANCE PIPELINES.
- FROM ACRES 75776
- REMAIN ACRES 75776



MAP BY:
**ASPEN RURAL LAND
CONSULTING**

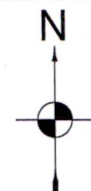
ERIC URSTADT, PE, PLS
971-250-1520
JUN 2023
FesslerJoeBeyer7S

14288

Transfer FROM Map

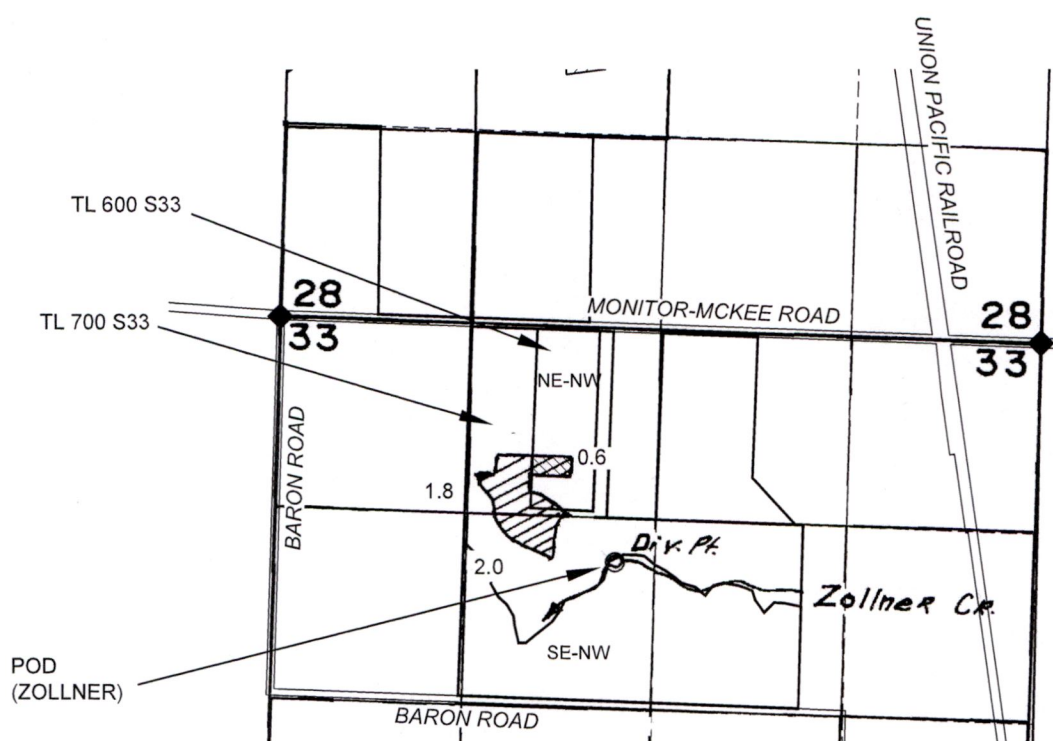
Section 33, T5S, R1W, Marion County
Certificate 87974

A-24



1 IN = 1320 FT
0 660 1320

RECEIVED
JUL 24 2023
OWRD



LOCATION OF POINT OF DIVERSION (POD):
POD (ZOLLNER) IS 1630' SOUTH AND 2340' EAST OF NW S33 (PER CERT. 87974)

NOTES:

- THIS MAP IS NOT INTENDED TO PROVIDE LEGAL DIMENSIONS OR LOCATIONS OF PROPERTY OWNERSHIP LINES.
- PROPERTY LINES AND QUARTER-QUARTER LINES ARE BASED ON THE TAX ASSESSOR MAP FOR SECTION 33, T5S, R1W.
- THE BASIS OF THIS MAP IS THE FINAL PROOF MAP FOR CERTIFICATE 87974.



LEGEND

- ◆ DONATION LAND CLAIM (DLC) CORNER
- SECTION CORNER
- POINT OF DIVERSION OR APPROPRIATION
- STREAM OR SURFACE DRAINAGE
- TAX LOT LINE
- SECTION LINE
- QUARTER-QUARTER LINE
- DLC LINES (NONE)
- ~ CONVEYANCE PIPELINES.
- FROM ACRES 87974
- REMAIN ACRES 87974

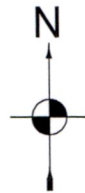
14288

MAP BY:
ASPEN RURAL LAND CONSULTING
ERIC URSTADT, PE, PLS
971-250-1520
JUN 2023
FesslerJoeBeyer7S

A-214

Transfer FROM Map

Section 33, T5S, R1W, Marion County
Certificate 95394

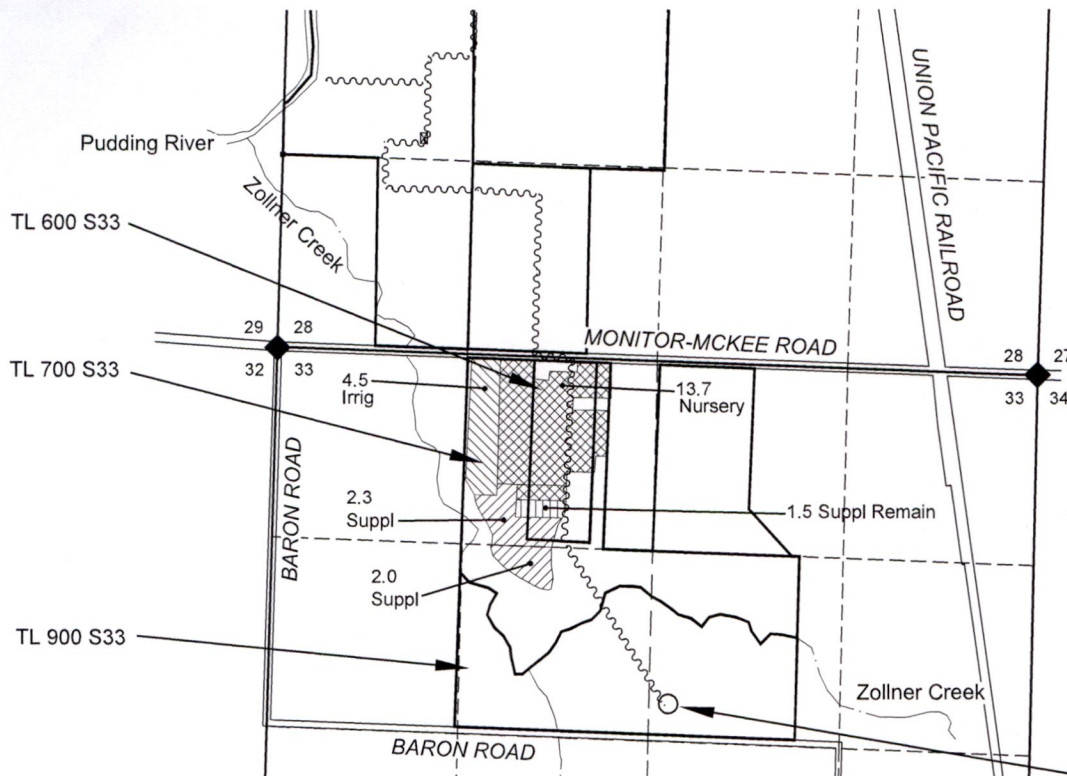


1 IN = 1320 FT
0 660 1320

RECEIVED

JUL 24 2023

OWRD



LOCATION OF POINT OF APPROPRIATION (WELL#5):
WELL #5 IS 2390' SOUTH & 2800' EAST FROM NW S33 (PER CERTIFICATE 96728).

WELL #5 =
MARI 19214

NOTES:

- THIS MAP IS NOT INTENDED TO PROVIDE LEGAL DIMENSIONS OR LOCATIONS OF PROPERTY OWNERSHIP LINES.
- PROPERTY LINES AND QUARTER-QUARTER LINES ARE BASED ON THE TAX ASSESSOR MAP FOR SECTION 33, T5S, R1W.

LEGEND

- ◆ DONATION LAND CLAIM (DLC) CORNER
- ◆ SECTION CORNER
- POINT OF DIVERSION OR APPROPRIATION
- - - - - STREAM OR SURFACE DRAINAGE
- TAX LOT LINE
- SECTION LINE
- - - - - QUARTER-QUARTER LINE
- DLC LINES (NONE)
- ~~~~~ CONVEYANCE PIPELINES.
- FROM ACRES 95394 Irrig
- FROM ACRES 95394 Suppl
- REMAIN ACRES 95394 Suppl
- REMAIN ACRES 95394 Nursery

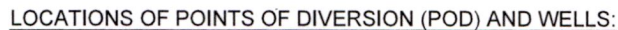


MAP BY:
**ASPEN RURAL LAND
CONSULTING**
ERIC URSTADT, PE, PLS
971-250-1520
JUN 2023
FesslerJoeBeyer7S

14288

A - 7/4

RECEIVED
JUL 24 2023
OWRD



NOTES:

-

DONATION LAND CLAIM (DLC) CORNER
 SECTION CORNER
 POINT OF DIVERSION OR APPROPRIATION
 STREAM OR SURFACE DRAINAGE
 TAX LOT LINE
 SECTION LINE
 QUARTER-QUARTER LINE
 DLC LINES

CONVEYANCE PIPELINES.
TO ACRES 75776 Irrig

TO ACRES 75776 Irrig & 95394 Suppl

TO ACRES 87974 Irrig & 95394 Suppl

MAP BY:

**ASPEN RURAL LAND
CONSULTING**

ERIC URSTADT, PE, PLS

971-250-1520

JUN 2023

FesslerJoeBever7S

14288