



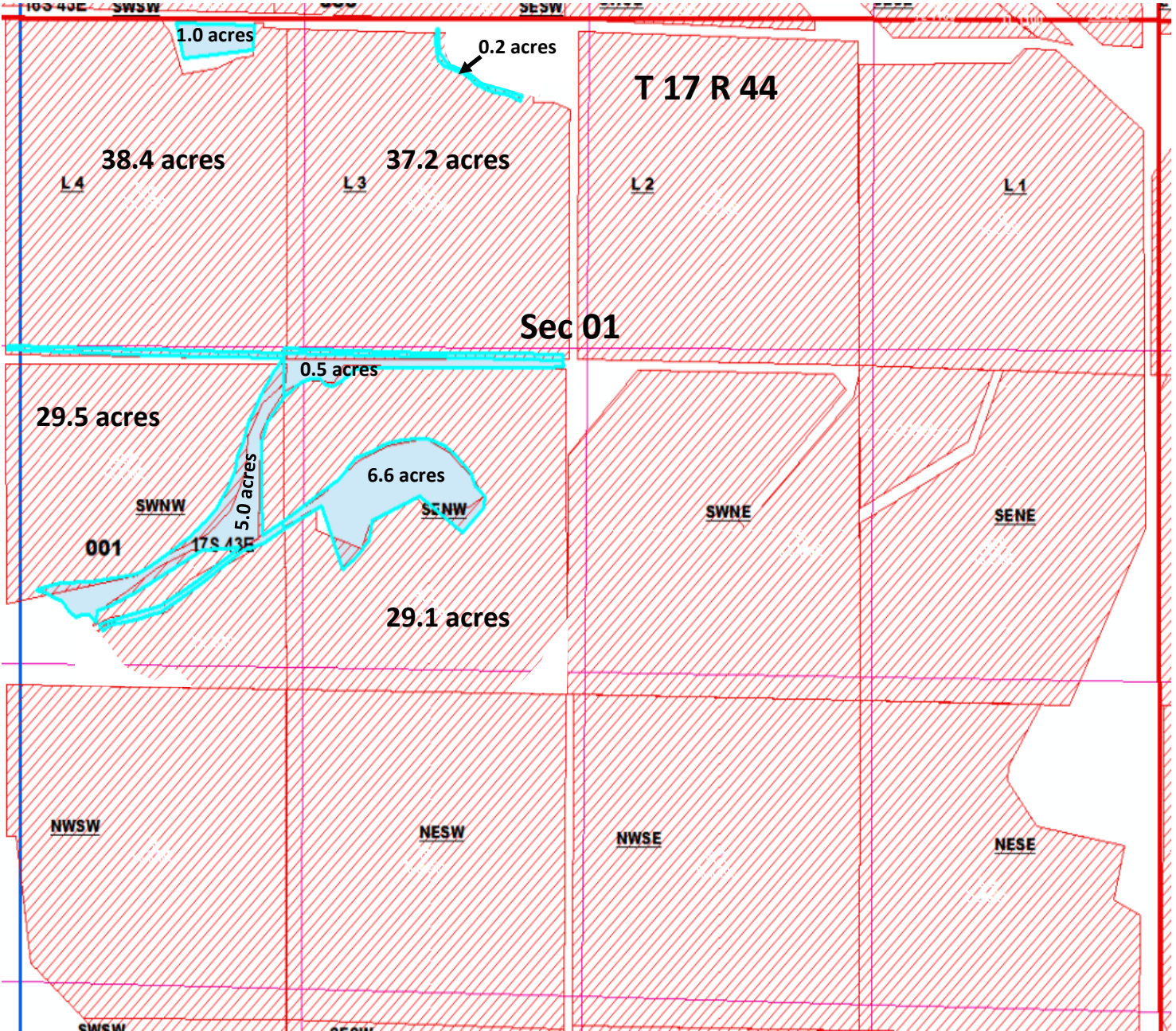
E-RECEIVED  
10/24/2023  
OWRD



Vale Oregon Irrigation District

T 17 R 43 Sec 01

Lower Snake River Properties

# CLAIM OF BENEFICIAL USE

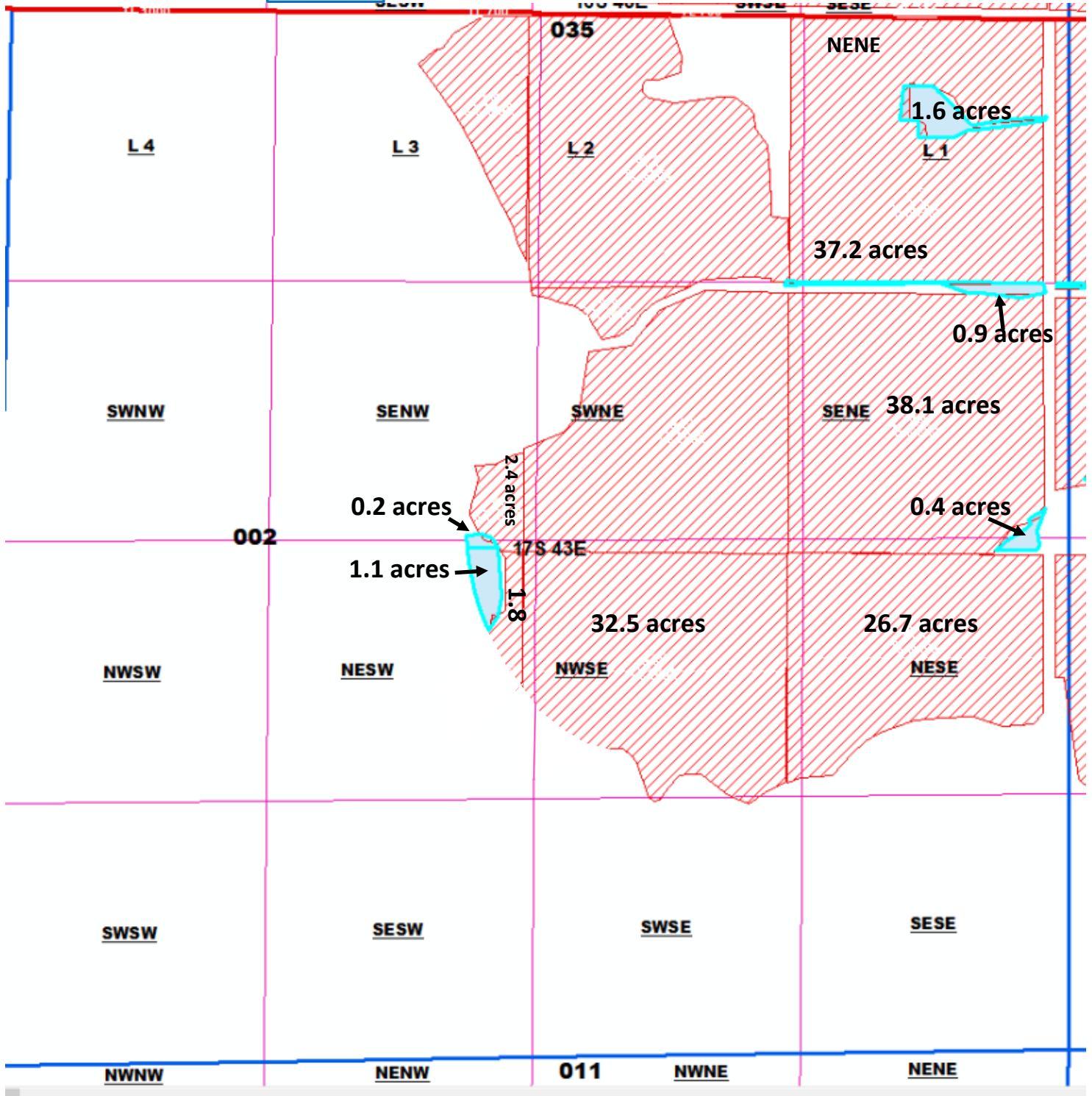


| Legend  |                           |
|---|---------------------------|
|  | LSR_Remaining_134.2 Acres |
|  | LSR_ON_13.3 Acres         |


|                         | On   | Off |
|-------------------------|------|-----|
| Certificate: 74080 (IS) | 13.3 |     |
| 74081 (IS)              | 13.3 |     |




E-RECEIVED  
10/24/2023  
OWRD



**Legend**

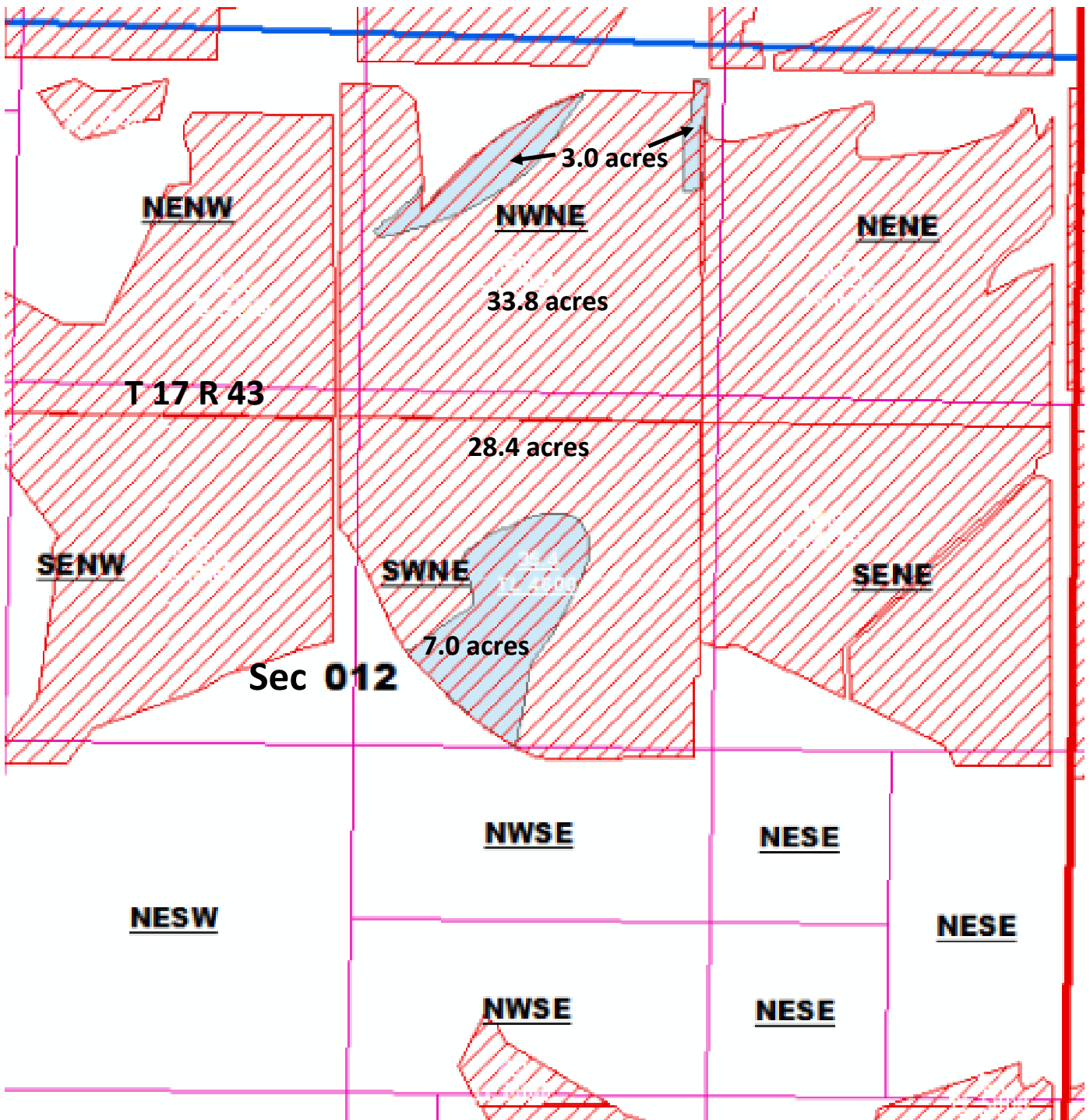
 LSR\_Remaining\_138.7 Acres

 LSR\_ON\_ 4.2 Acres

|                         | On  | Off |
|-------------------------|-----|-----|
| Certificate: 74080 (IS) | 4.2 |     |
| 74081 (IS)              | 4.2 |     |



E-RECEIVED  
10/24/2023  
OWRD



**Legend**

|  |                           |
|--|---------------------------|
|  | LSR_Remaining_138.7 Acres |
|  | LSR_ON_ 10.0 Acres        |

|                         | On   | Off |
|-------------------------|------|-----|
| Certificate: 74080 (IS) | 10.0 |     |
| 74081 (IS)              | 10.0 |     |



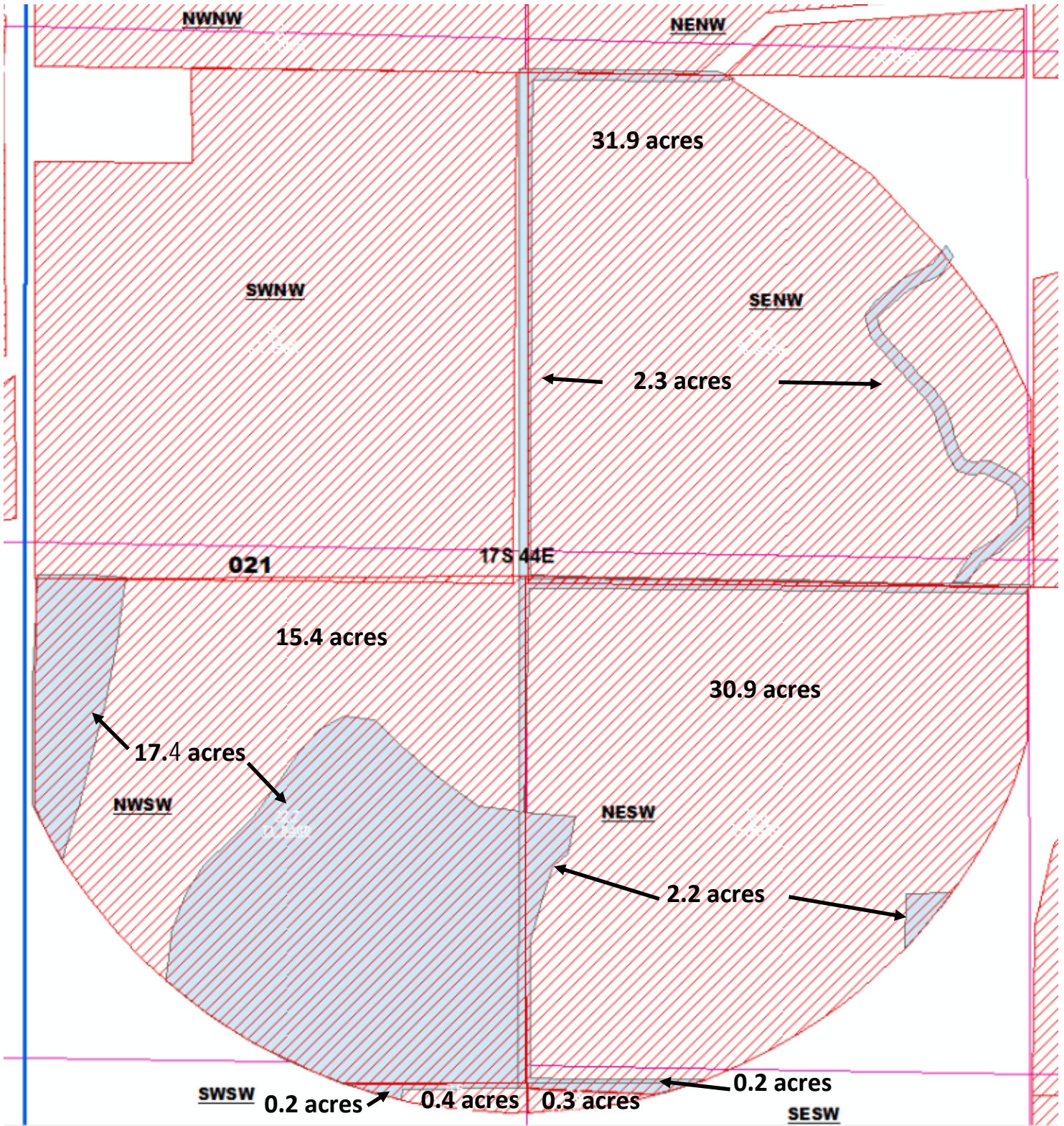
E-RECEIVED  
11/06/2023  
OWRD

Vale Oregon Irrigation District

T 17 R 44 Sec 21

# CLAIM OF BENEFICIAL USE

Lower Snake River Properties

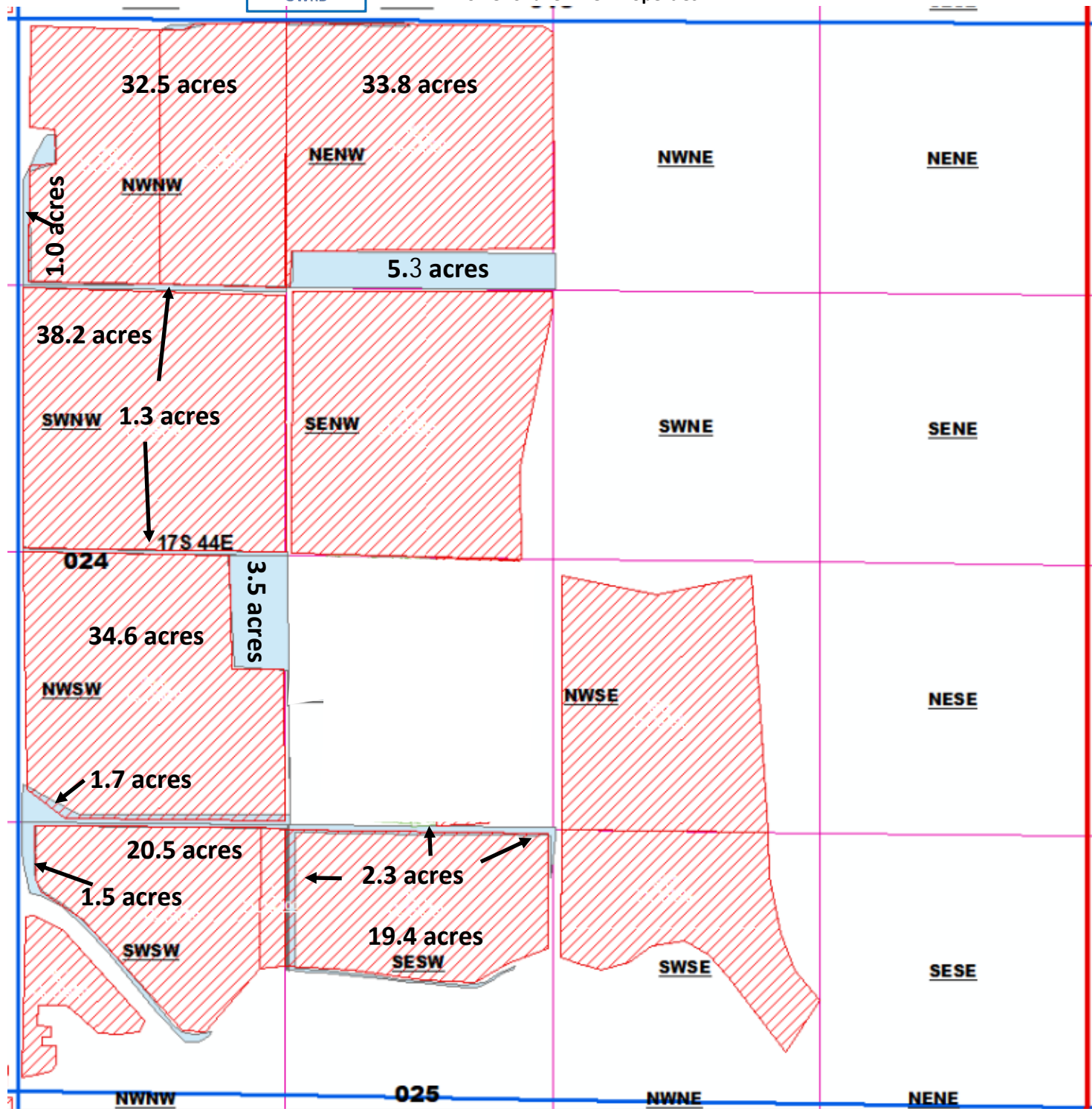


**Legend**



|  |                          |
|--|--------------------------|
|  | LSR_Remaining_78.9 Acres |
|  | LSR_ON_22.3 Acres        |

|                         | On   | Off |
|-------------------------|------|-----|
| Certificate: 74080 (IS) | 22.3 |     |
| 74081 (IS)              | 22.3 |     |

E-RECEIVED  
11/06/2023  
OWRD



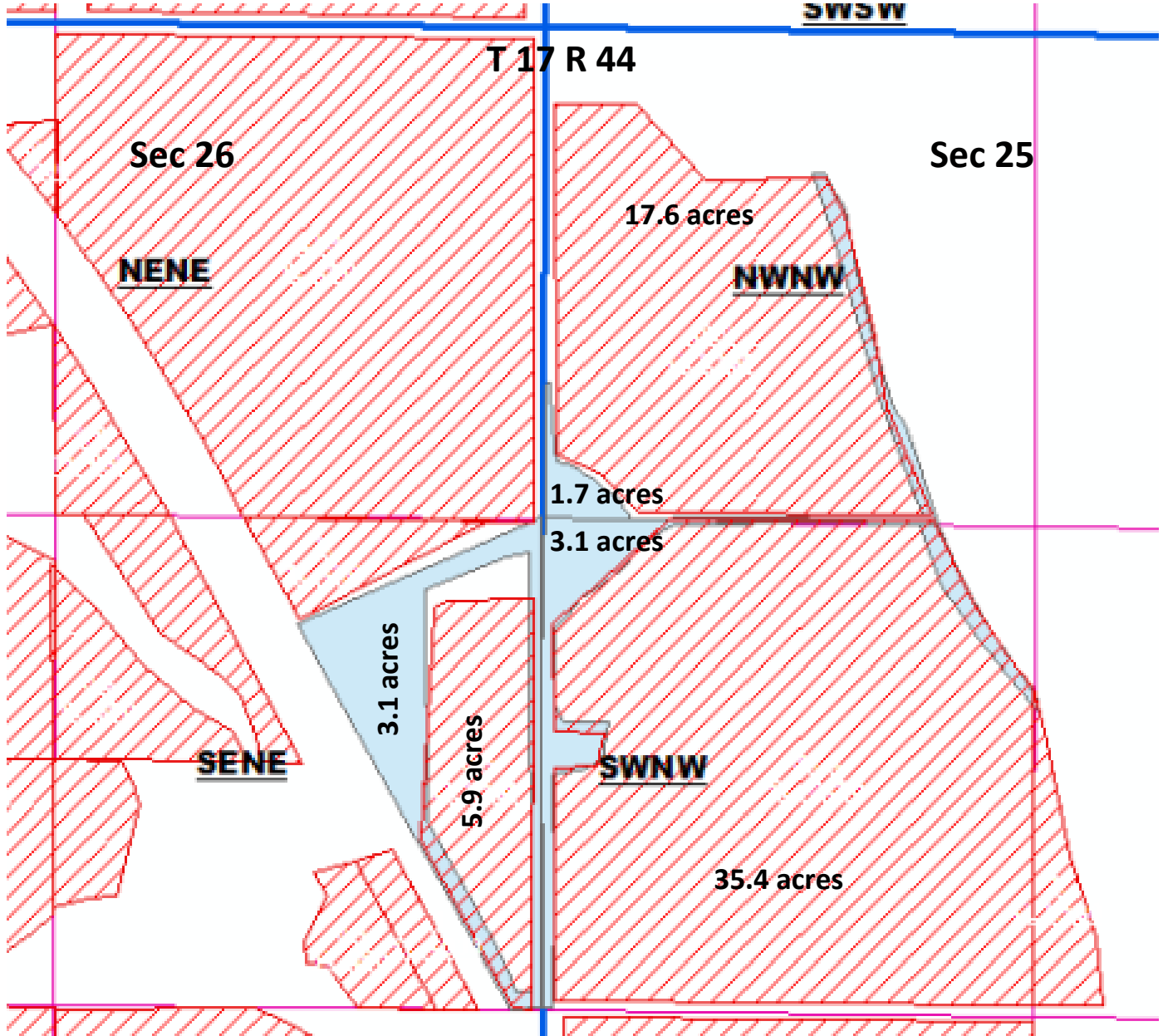
**Legend**

-  LSR\_Remaining\_179 Acres
-  LSR\_ON\_16.6 Acres

|                         | On   | Off |
|-------------------------|------|-----|
| Certificate: 74080 (IS) | 16.6 |     |
| 74081 (IS)              | 16.6 |     |



E-RECEIVED  
10/24/2023  
OWRD



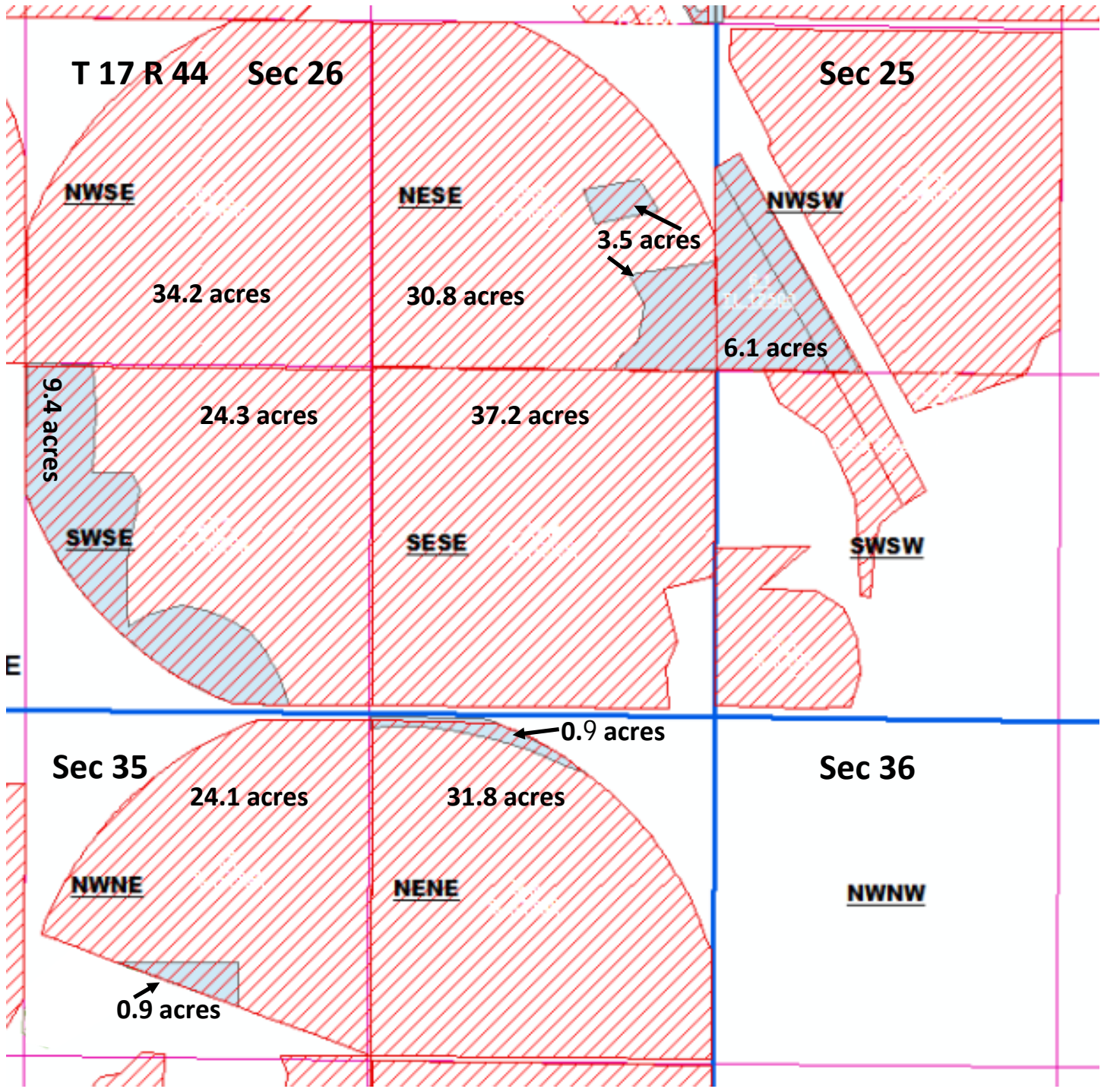
**Legend**

- LSR\_Remaining\_58.9 Acres
- LSR\_ON\_7.9 Acres

|              |            | On  | Off |
|--------------|------------|-----|-----|
| Certificate: | 74080 (IS) | 7.9 |     |
|              | 74081 (IS) | 7.9 |     |



E-RECEIVED  
11/06/2023  
OWRD



**Legend**

|  |                           |
|--|---------------------------|
|  | LSR_Remaining_182.4 Acres |
|  | LSR_ON_ 20.8 Acres        |

|                         | On   | Off |
|-------------------------|------|-----|
| Certificate: 74080 (IS) | 20.8 |     |
| 74081 (IS)              | 20.8 |     |