

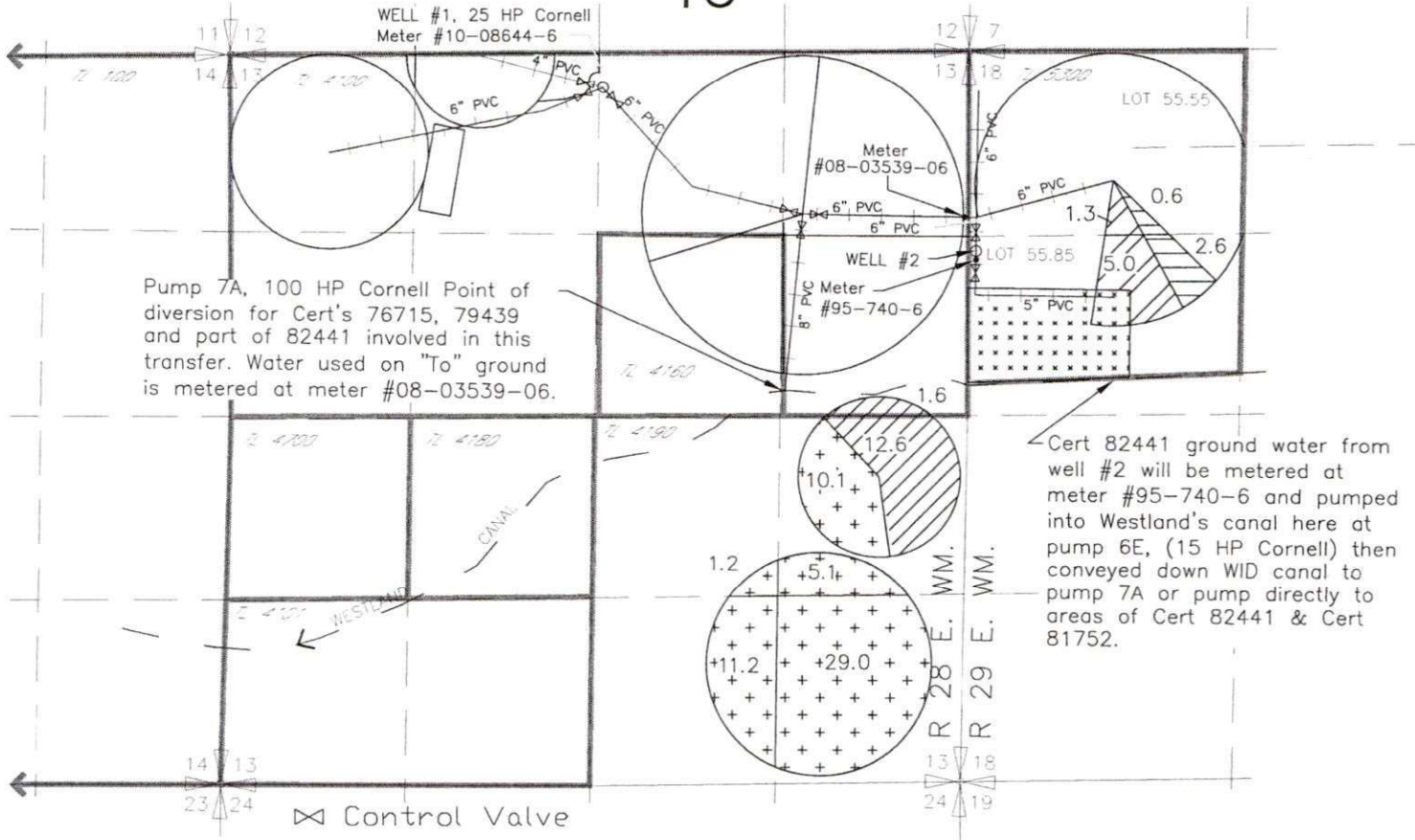
2020 WESTLAND IRRIGATION DISTRICT INDEX

E-RECEIVED
5/1/2024
OWRD

Claim of Beneficial
Use Map for T-13407

DOUBLE M RANCH, INC
CERT'S 76715, 79439, T-9198 CERT 81752,
T-9198 CERT 76051, T-9198 CERT 79439
T3N, R 28 & 29 E, W.M.

TO

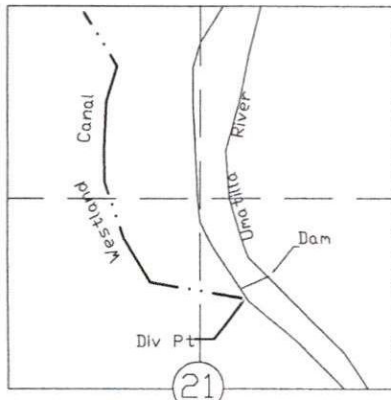


WELL #1 Located 270' South & 2540' West from the NE corner section 13, T3N, R28E, WM

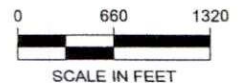
WELL #2 Located 1450' South & 3160' West from the N 1/4 corner section 18, T3N, R29E, WM

T3N., R 29E., W.M.

INDEX



MAP 1		6.3 ac	Primary Cert 76715 & SUPP Cert 79439
MAP 2		3.2 ac	T-11328 Cert 81752
MAP 3		14.2 ac	T-9198 CERT 76051 SUPP T-9198 CERT 79439
MAP 4		56.6 ac	T-9198 CERT 76050 SUPP T-9198 CERT 79439
			NOT INVOLVED IN THIS TRANSFER



NOTE: THE PURPOSE OF THIS MAP IS TO IDENTIFY THE APPROXIMATE LOCATION OF THE WATER RIGHT. IT IS NOT INTENDED TO PROVIDE INFORMATION RELATIVE TO THE LOCATION OF PROPERTY OWNERSHIP BOUNDARY LINES.

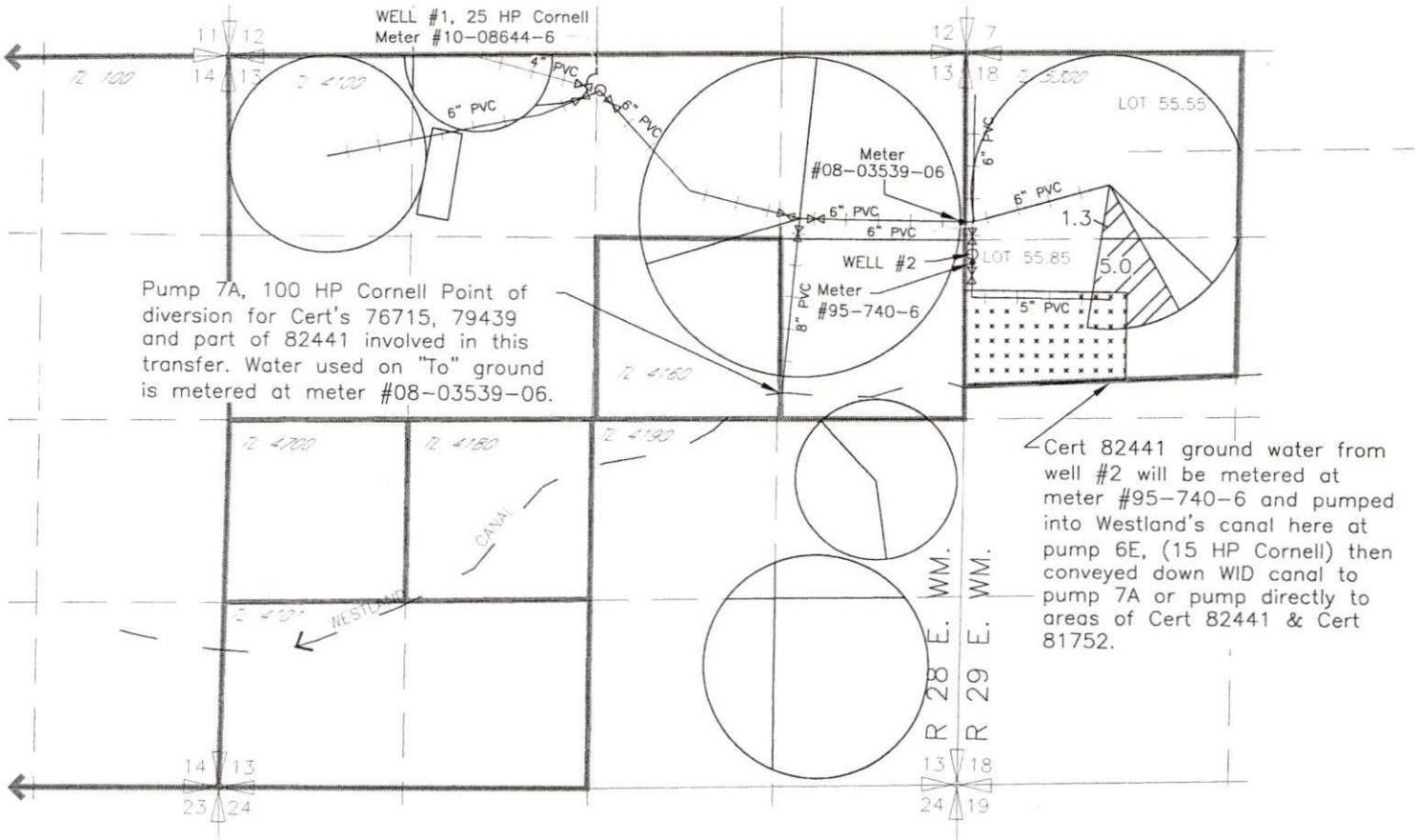
13407

2020 WESTLAND IRRIGATION DISTRICT

E-RECEIVED
5/1/2024
OWRD

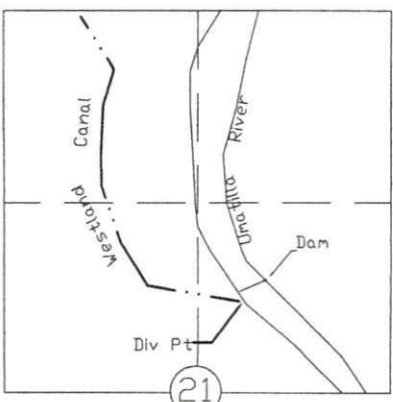
Claim of Beneficial
Use Map for T-13407

DOUBLE M RANCH, INC CERT'S 76715, 79439 T3N, R 28 & 29 E, W.M. TO

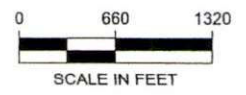


⊗ Control Valve

T3N., R 29E., W.M.



-  6.3 ac Primary Cert 76715 & Supp Cert 79439
-  NOT INVOLVED IN THIS TRANSFER



NOTE: THE PURPOSE OF THIS MAP IS TO IDENTIFY THE APPROXIMATE LOCATION OF THE WATER RIGHT. IT IS NOT INTENDED TO PROVIDE INFORMATION RELATIVE TO THE LOCATION OF PROPERTY OWNERSHIP BOUNDARY LINES.

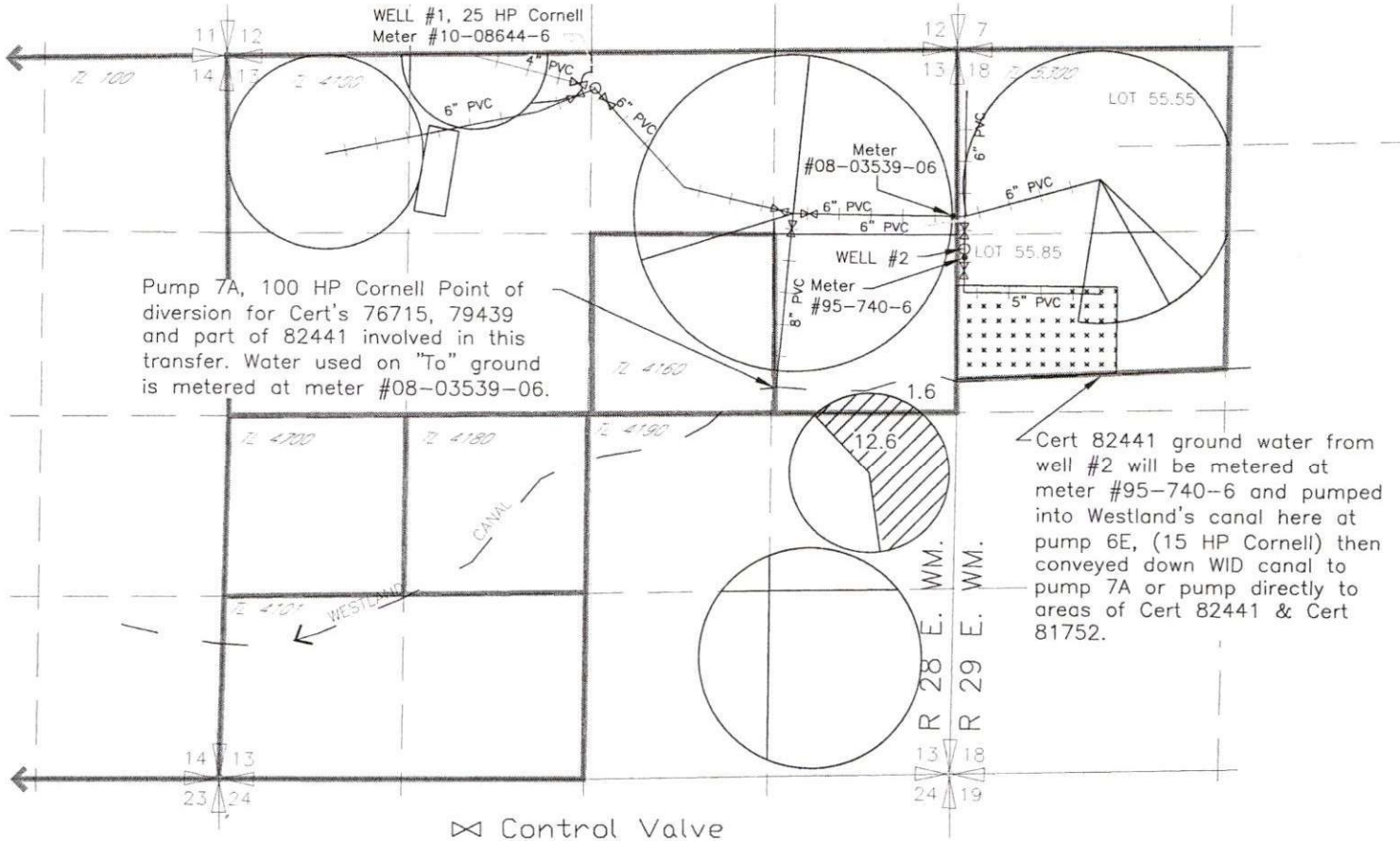
13407

2020 WESTLAND IRRIGATION DISTRICT

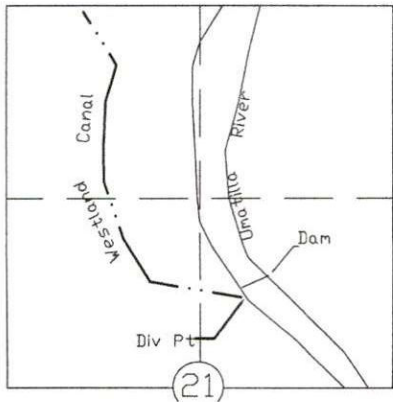
E-RECEIVED
5/1/2024
OWRD

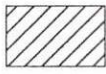
Claim of Beneficial
Use Map for T-13407

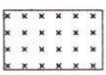
DOUBLE M RANCH, INC
T-9198 CERT 76051, T-9198 CERT 79439
T3N, R 28 & 29 E, W.M.
TO

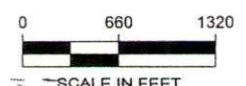


T3N., R 29E., W.M.



 14.2 ac T-9198 CERT 76051
SUPP T-9198 CERT 79439

 NOT INVOLVED IN THIS TRANSFER



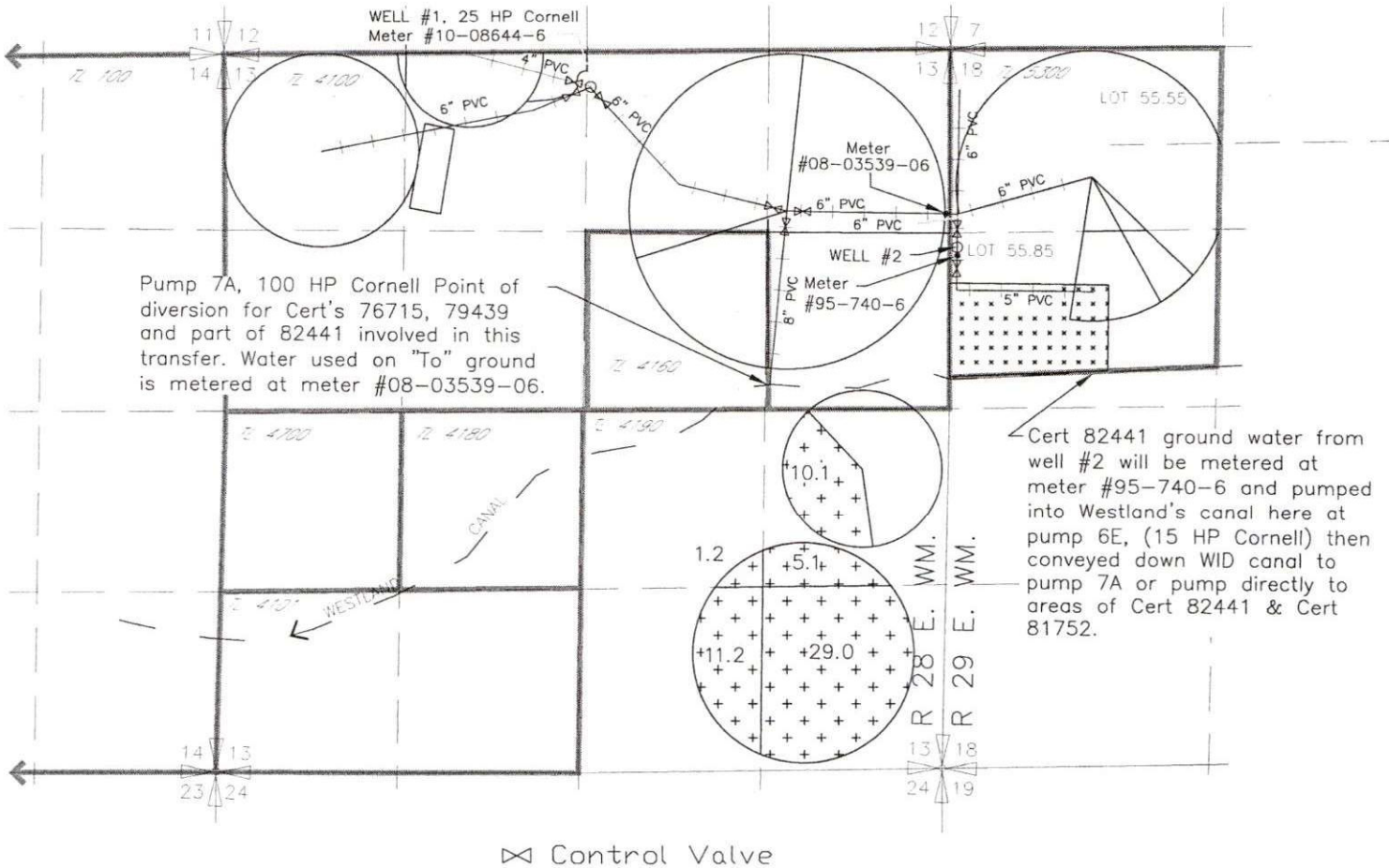
NOTE: THE PURPOSE OF THIS MAP IS TO IDENTIFY THE APPROXIMATE LOCATION OF THE WATER RIGHT. IT IS NOT INTENDED TO PROVIDE INFORMATION RELATIVE TO THE LOCATION OF PROPERTY OWNERSHIP BOUNDARY LINES.

2020 WESTLAND IRRIGATION DISTRICT

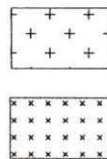
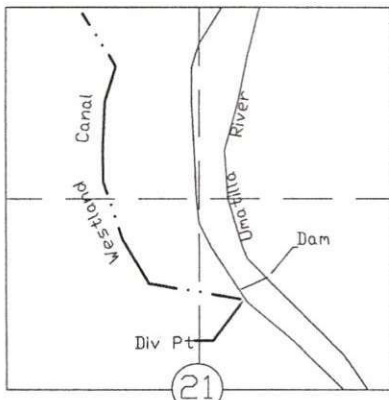
E-RECEIVED
5/1/2024
OWRD

Claim of Beneficial
Use Map for T-13407

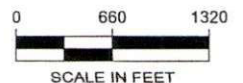
DOUBLE M RANCH, INC T-9198 CERT 76050, T-9198 CERT 79439 T3N, R 28 & 29 E, W.M. TO



T3N., R 29E., W.M.



56.6 ac T-9198 CERT 76050
SUPP T-9198 CERT 79439
NOT INVOLVED IN THIS
TRANSFER



NOTE: THE PURPOSE OF THIS MAP IS TO IDENTIFY THE APPROXIMATE LOCATION OF THE WATER RIGHT. IT IS NOT INTENDED TO PROVIDE INFORMATION RELATIVE TO THE LOCATION OF PROPERTY OWNERSHIP BOUNDARY LINES.

DRAWING: \\nw-files\Public\Project\30-08-015 - Porfily Water Rights Consulting\00 Misc Engineering\Cad\052\Double M 2020 TO TR.dwg
PRINTED BY: railard on 02/25/20 01:28 PM

13407