

RECEIVED
JAN 14 1970
STATE ENGINEER
SALEM OREGON

QUIET VILLAGE SUBDIVISION
IN CITY OF ASHLAND, JACKSON CO., OREGON

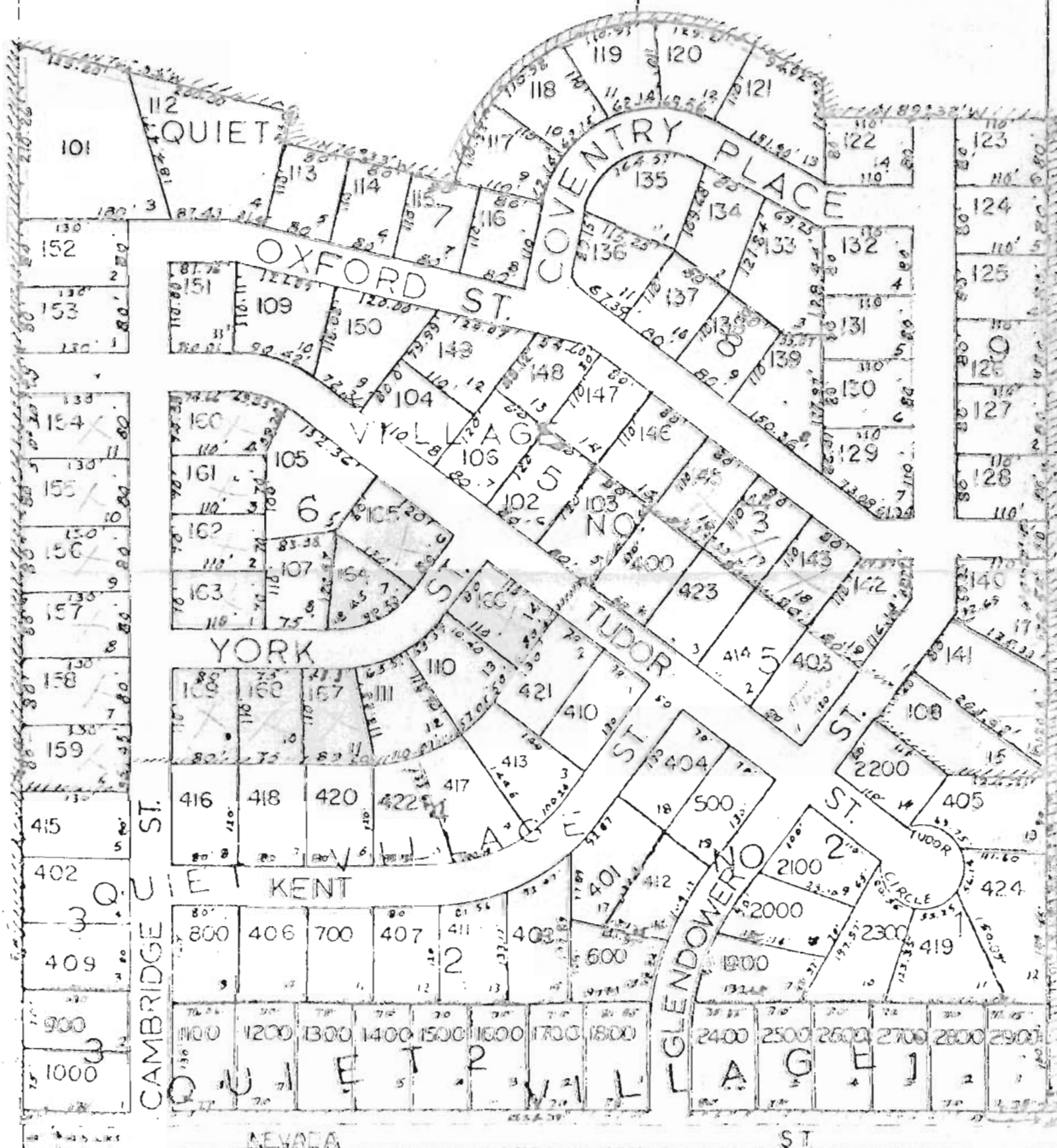
RECEIVED
JAN 26 1970
STATE ENGINEER
SALEM OREGON

SOURCE OF PRESENT WATER RIGHT

T 38S R1E 32 33
T 39S R1E 5 4

N.E. COV
D.L.C. 35

300
125'



5-1