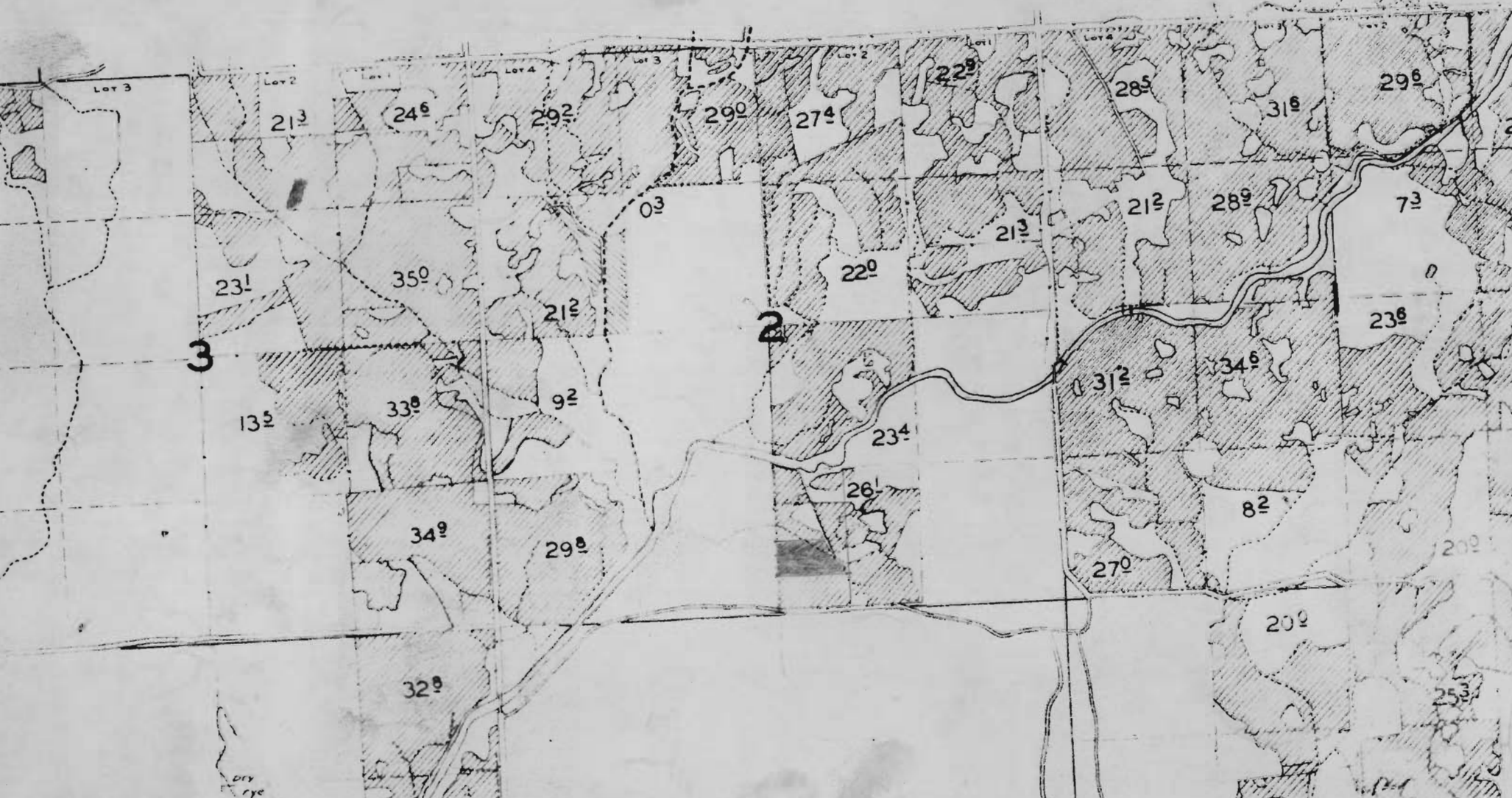


RECEIVED

JUN 19 1970

STATE ENGINEER
SALEM, OREGON





RECEIVED
 JUN 8 1970
 STATE ENGINEER
 SALEM, OREGON

29

BEND

ALFALFA

T-2398

water to be transferred
 from area colored in
 red. Outline is original
 contract between Romsdy
 & Hallen

Areas shown are approximate

31-17-14

HALL