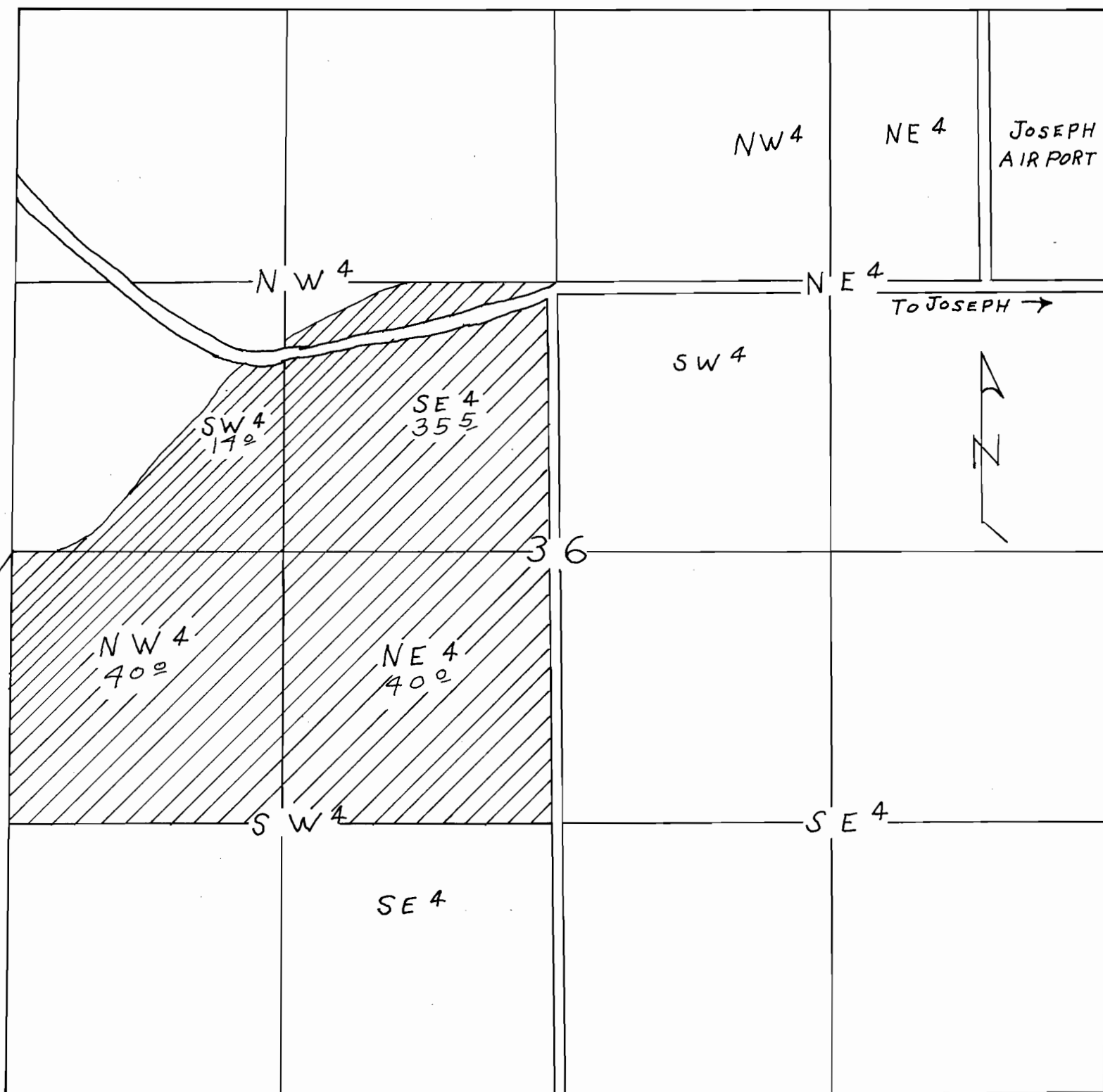
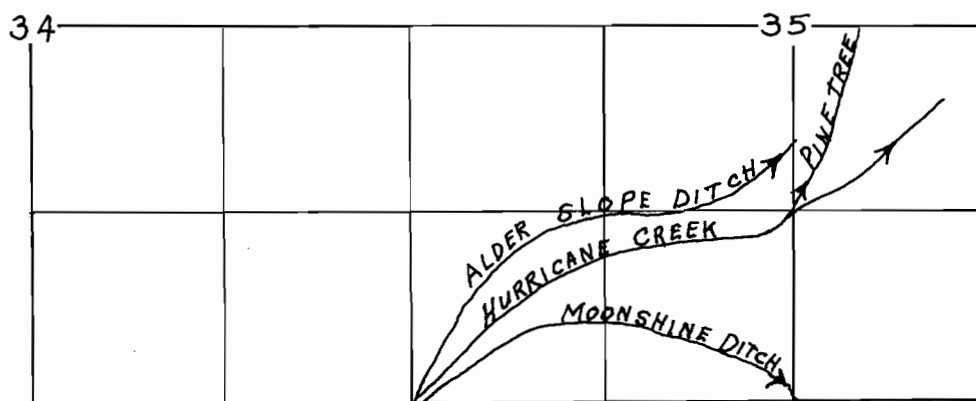


T.2 S. R.44 E.



OLD POD BEARS S36°31'W
588' FROM W 1/4 COR. SEC 36

SCALE 1" = 660'
AERIAL BASE
ASC PHOTO 5EE273
ROBIN BONER DITCH



NE 1/4 NE 4
SEC 3 T 3 S
R 44 E. W. M.

NEW DIVERSION
S76°02'W, 49' FROM NE CORNER SEC 3
BEING WITHIN NE 1/4 NE 4 SEC 3 T 3 S R 44 E. W. M.

OLD DIVERSION IS
NE CORNER OF SE 4
SEC 35 T 2 S R 44 E. W. M.

SCALE 1" = 1320'