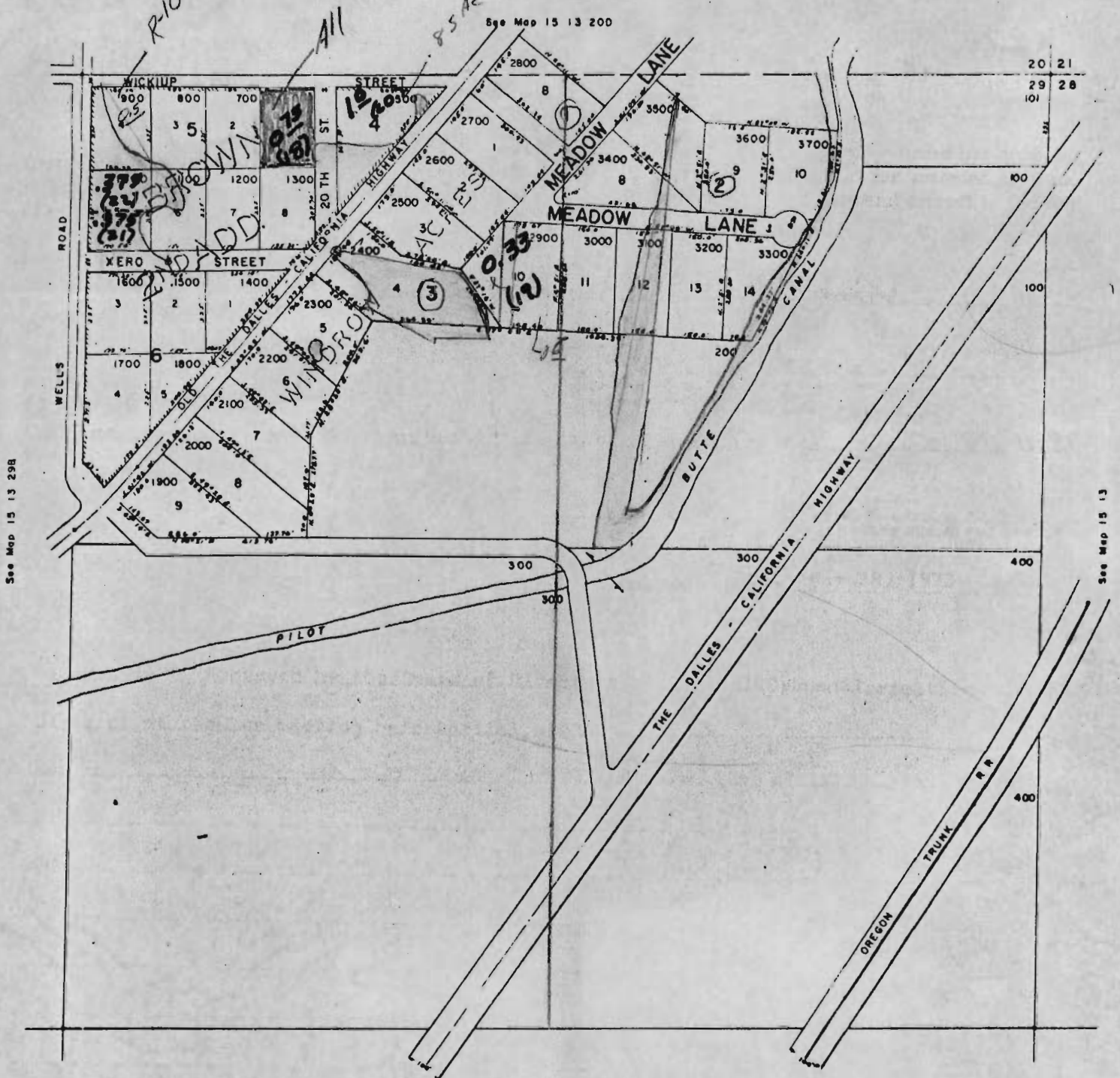


DESCHUTES COUNTY

SCALE 1" = 200'

See Map 15 13 200



See Map 15 13 29B

See Map 15 13

See Map 15 13

15 13 29A

Henry Oienert

RECEIVED
 FEB 8 1971
 STATE ENGINEER
 SALEM, OREGON

RECEIVED
 JUL 24 1970
 STATE ENGINEER
 SALEM, OREGON