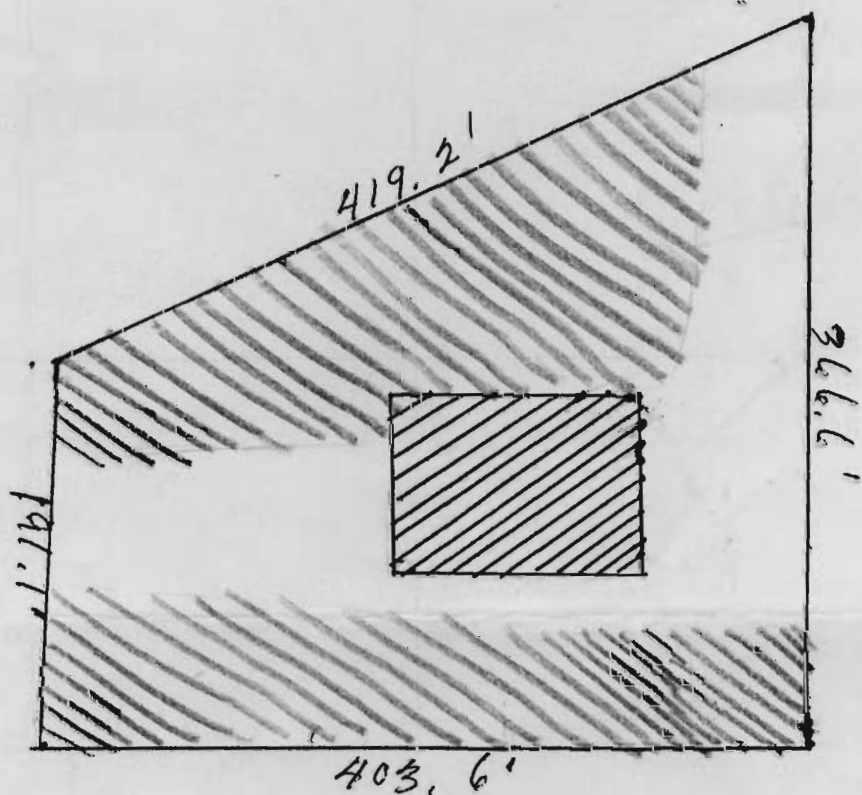


Proposed utilization of requested water on
2.5 acres, Sect 8, T5 17S, Rng 12 E.W.M.

RECEIVED
MAR 1 1971
STATE ENGINEER
SALEM, OREGON



— Present one acre of water used for household use and irrigation of lawns.



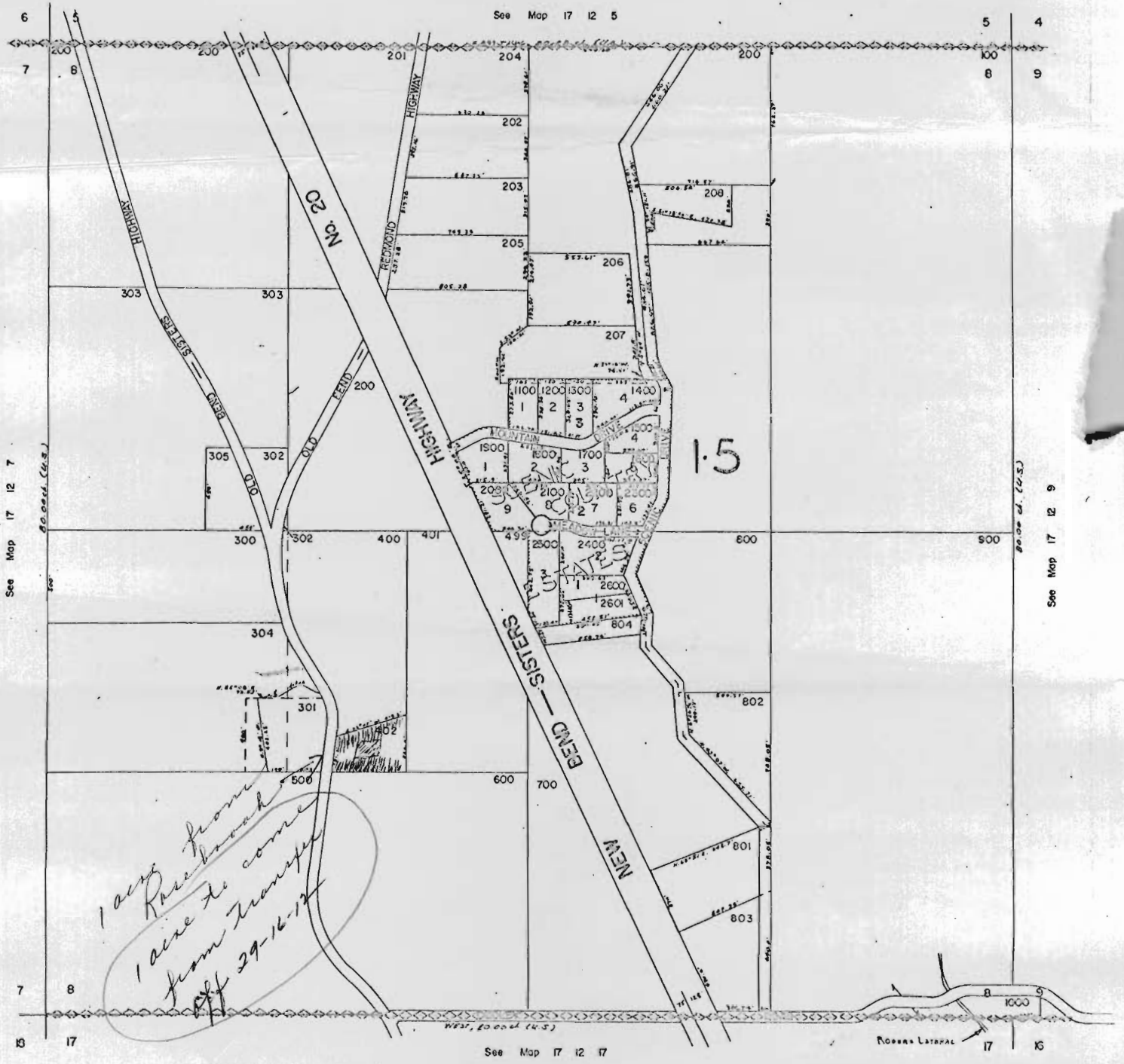
— Requested transfer of one acre for use as irrigation of pasture ground and garden

RECEIVED
MAR 16 1971
STATE ENGINEER
SALEM OREGON

RECEIVED
MAR 1 1971
STATE ENGINEER
SALEM OREGON

Section 8, T.17S. R.12E.W.M.
DESCHUTES COUNTY
1" = 400'

17 12 8



T-2491

17 12 8

RECEIVED
MAR 16 1971
STATE ENGINEER
SALEM, OREGON

RECEIVED
MAR 1 1971
STATE ENGINEER
SALEM, OREGON

NW1/4 SEC. 29 T.16S. R.12E.W.M.
DESCHUTES COUNTY

16 12 29B

1"=200'

See Map 16 12



*one acre of
water to be
transferred
8-17-71*

See Map 16 12 30

See Map 16 12 28

See Map 16 12 29C

16 12 29B