

1394.74

1391.33

1391.33

Point of diversion

Jones  
unplotted

L.R. JENSEN  
Occupant

Note: 2.30 W.R. Row's  
in street  
SW 1/4 Sec 17 T15S, R12E

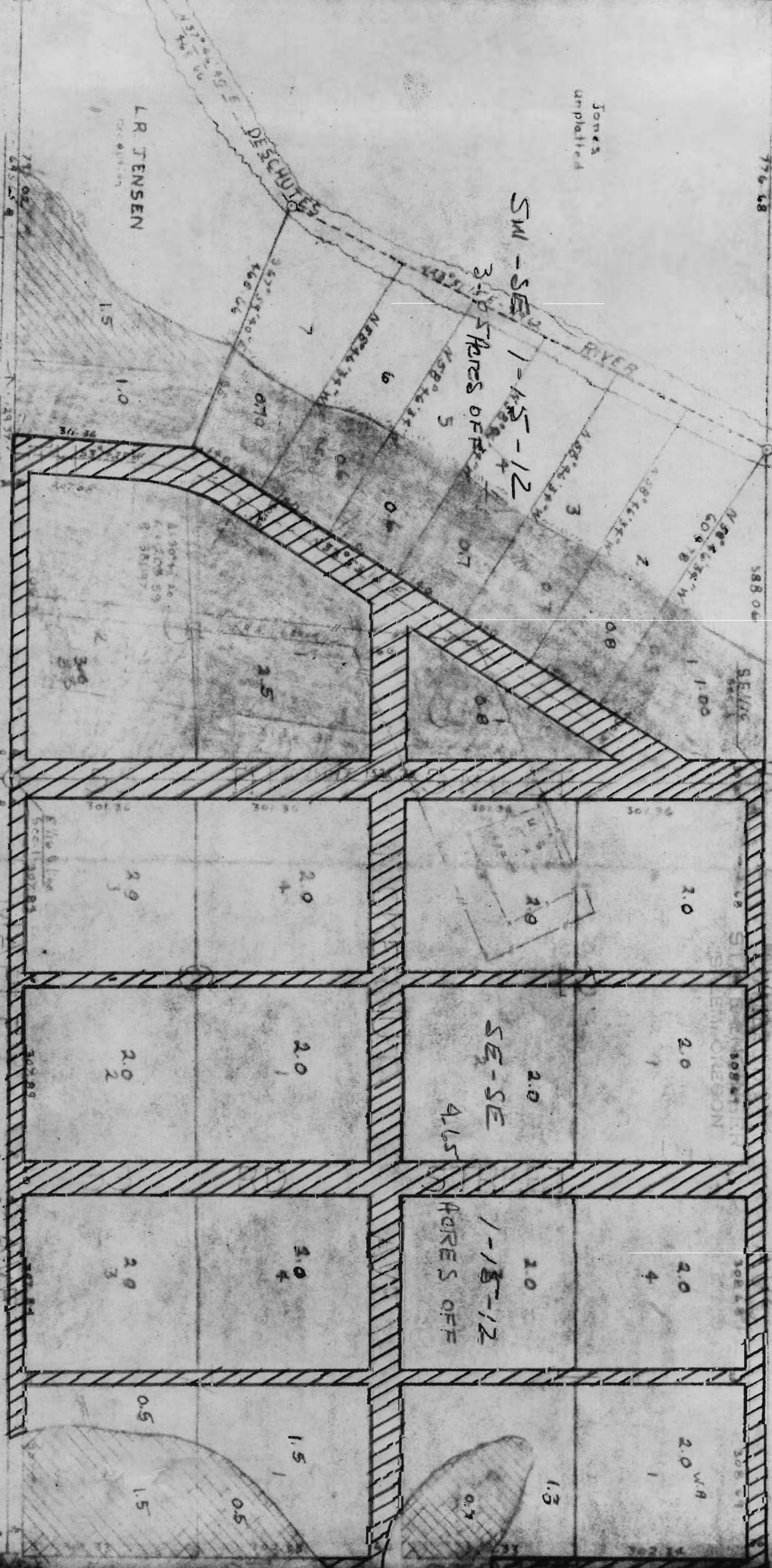
1391.33

Total 1.3

589°41'27"E

1391.33

Point of diversion



SW-SE 1-15-12  
3-1/2 Acres OFF

SE-SE 4.65

1-15-12  
4.65 Acres OFF

RECEIVED

BOBBY  
SEMINOLESON

2.0 W/A

776.68

588.04

SELLING

589°41'27"E

302.43

302.43

1.00

1.00

2.0

2.0

2.0

2.0

0.8

0.8

2.0

2.0

2.0

2.0

2.0

0.7

0.7

2.0

2.0

2.0

2.0

2.0

0.6

0.6

2.0

2.0

2.0

2.0

2.0

0.5

0.5

2.0

2.0

2.0

2.0

2.0

0.4

0.4

2.0

2.0

2.0

2.0

2.0

0.3

0.3

2.0

2.0

2.0

2.0

2.0

0.2

0.2

2.0

2.0

2.0

2.0

2.0

0.1

0.1

2.0

2.0

2.0

2.0

2.0

0.0

0.0

2.0

2.0

2.0

2.0

2.0

0.0

0.0

2.0

2.0

2.0

2.0

2.0

0.0

0.0

2.0

2.0

2.0

2.0

2.0

0.0

0.0

2.0

2.0

2.0

2.0

2.0

0.0

0.0

2.0

2.0

2.0

2.0

2.0

0.0

0.0

2.0

2.0

2.0

2.0

2.0

0.0

0.0

2.0

2.0

2.0

2.0

2.0

0.0

0.0

2.0

2.0

2.0

2.0

2.0

0.0

0.0

2.0

2.0

2.0

2.0

2.0

0.0

0.0

2.0

2.0

2.0

2.0

2.0

0.0

0.0

2.0

2.0

2.0

2.0

2.0

0.0

0.0

2.0

2.0

2.0

2.0

2.0

0.0

0.0

2.0

2.0

2.0

2.0

2.0

2.0

776.68

Jones unplatted

*Barber*  
1-15-12

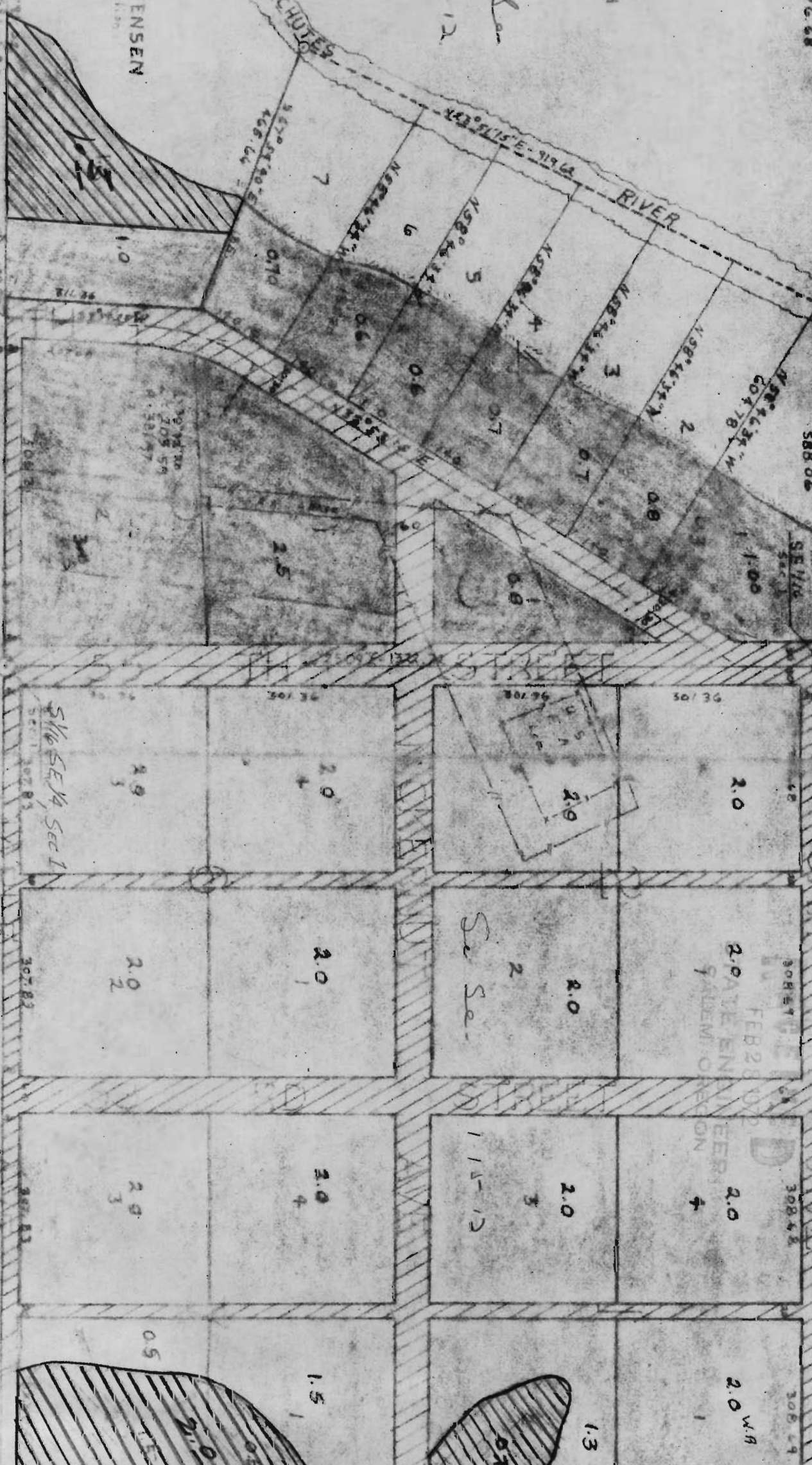
LR JENSEN  
Ownership

DESCHUTES RIVER

RIVER

HOWELL ACRES

The point of divergence



SW 1/4 Sec 14, Sec 1

See Sec

ROBERT  
FEB 28 1909  
2.0 PAT JENSEN  
SALEM OREGON

1755.125

7391.33

88941.27 E

1391.33

The point of divergence



N. 09° 43' 11" E 1523.8'

59TH STREET

MAPLE AVENUE

Scale 1" = 200'

See Me. 12-15-12

99 KINGWOOD STREET

HOWELL

STREET

57TH STREET

LARCH AVENUE

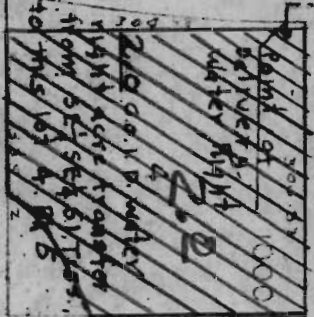
AVENUE

JAS. SKUPINE

12 VESTIBLES

Point of divergence water right

J.S. C.O.I.D. water right acre transfer sec 2 sec 4 S1. T15. R12 E to this lot 3, 4, 5



AVENUE

2.4

PREPARED

AVENUE

STREET