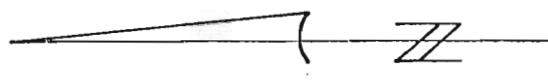


NW 1/4, NW 1/4, SEC. 8, T. 17S., R. 12E., W.M.

RECEIVED  
JUN 21 1972  
STATE ENGINEER  
SALEM OR - ON

RECEIVED  
OCT 19 1972  
STATE ENGINEER  
SALEM OREGON



SCALE: 1" = 200'

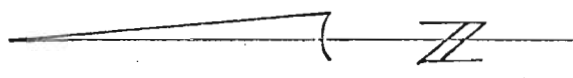
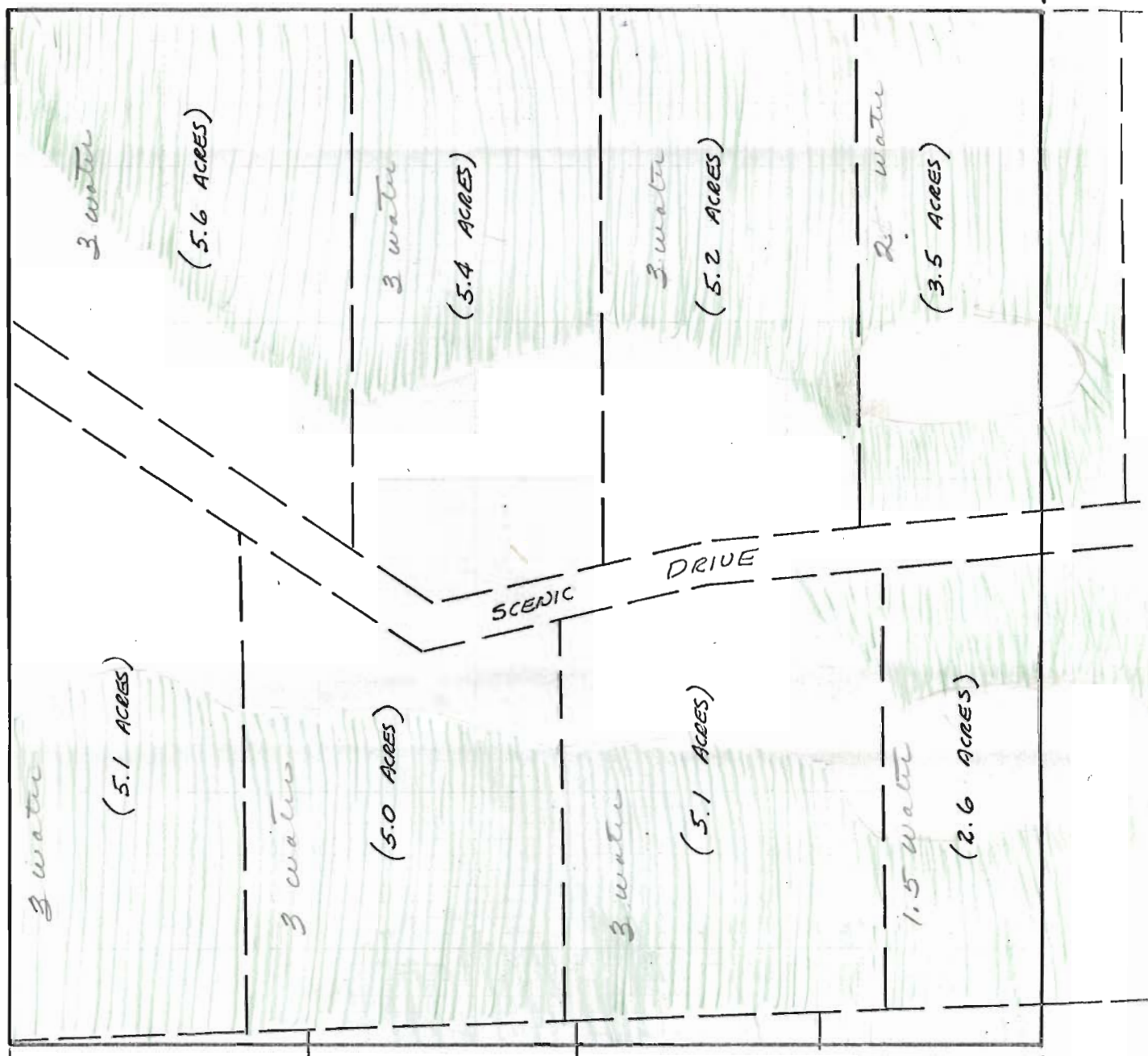
MAP

MAP #1

21.5 Remaining

**RECEIVED**  
JUN 21 1972  
STATE ENGINEER  
SALEM OREGON

NW 1/4, NE 1/4, SEC. 8, T.17S., R.12 E., W.M.



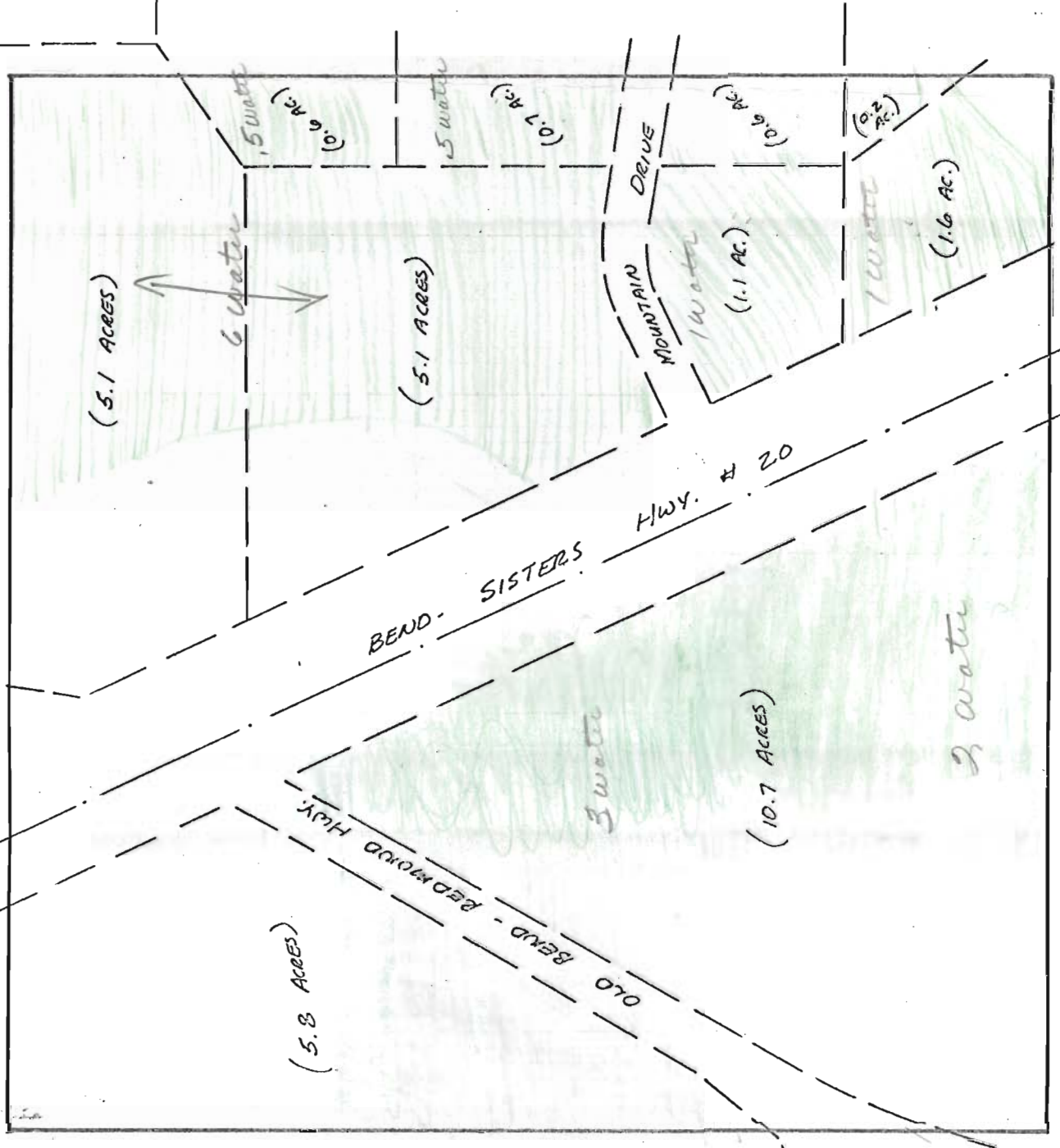
SCALE: 1" = 200'

**RECEIVED**  
OCT 19 1972  
STATE ENGINEER  
SALEM OREGON

SE 1/4, NW 1/4, SEC. 8, T. 17 S., R. 12 E., W. M.

14 acres of water remaining

RECEIVED  
JUN 21 1972  
STATE ENGINEER  
SALEM OREGON



SCALE: 1" = 200'

RECEIVED  
OCT 19 1972  
STATE ENGINEER  
SALEM OREGON

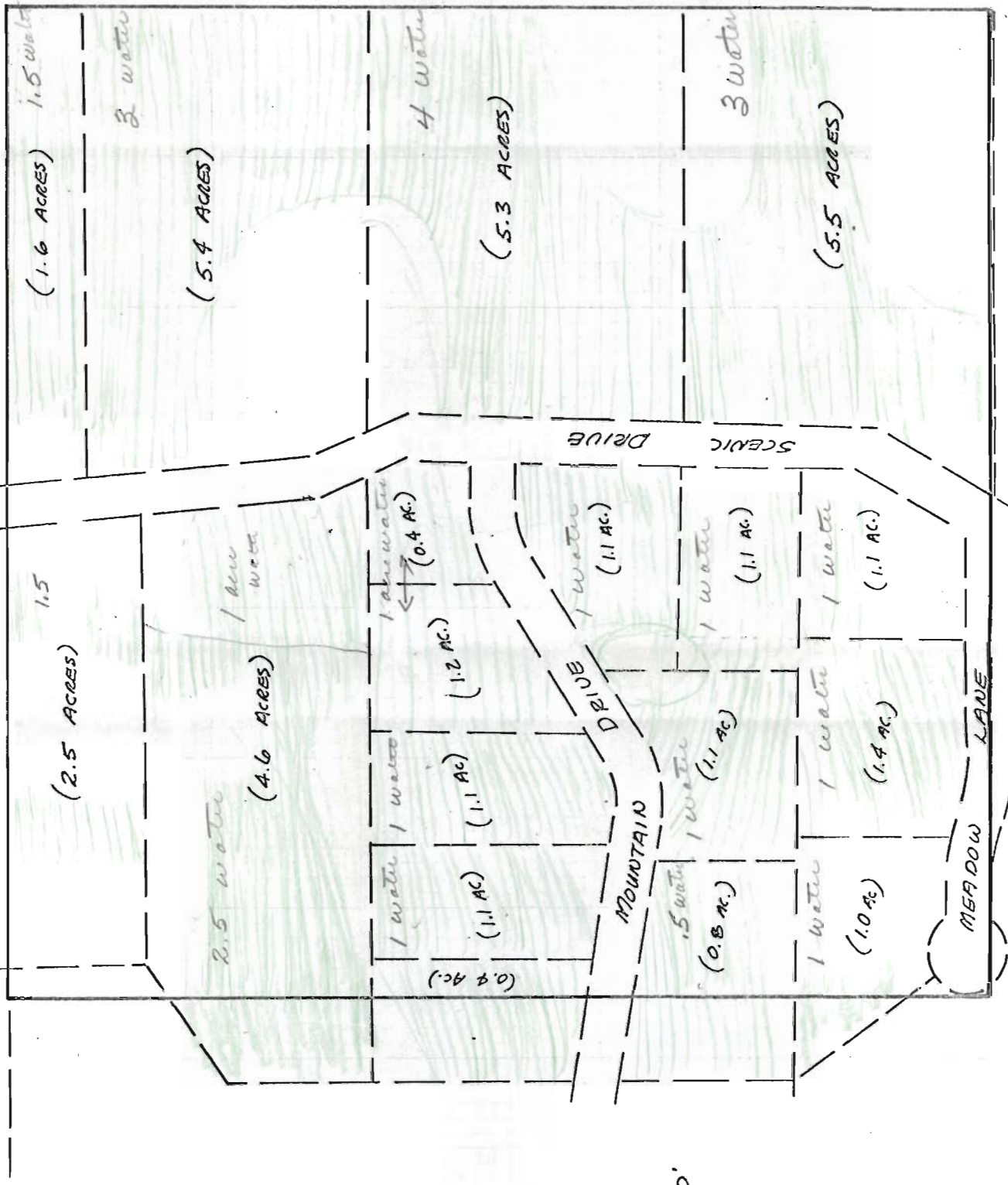
11/15/72



SW 1/4, NE 1/4, SEC. 8, T. 17 S., R. 12 E., W.M.

2.6 acres of water remaining

RECEIVED  
JUN 21 1972  
STATE ENGINEER  
SALEM OREGON



RECEIVED  
OCT 19 1972  
STATE ENGINEER  
SALEM OREGON

NE 1/4, NW 1/4, SEC. 8, T.17S., R.12E., W.M.

See decree book  
Page 156  
19.5 water

~~19.5 water~~

**RECEIVED**  
JUN 21 1972  
STATE ENGINEER  
SALEM OREGON

**RECEIVED**  
OCT 19 1972  
STATE ENGINEER  
SALEM OREGON



SCALE: 1" = 200'