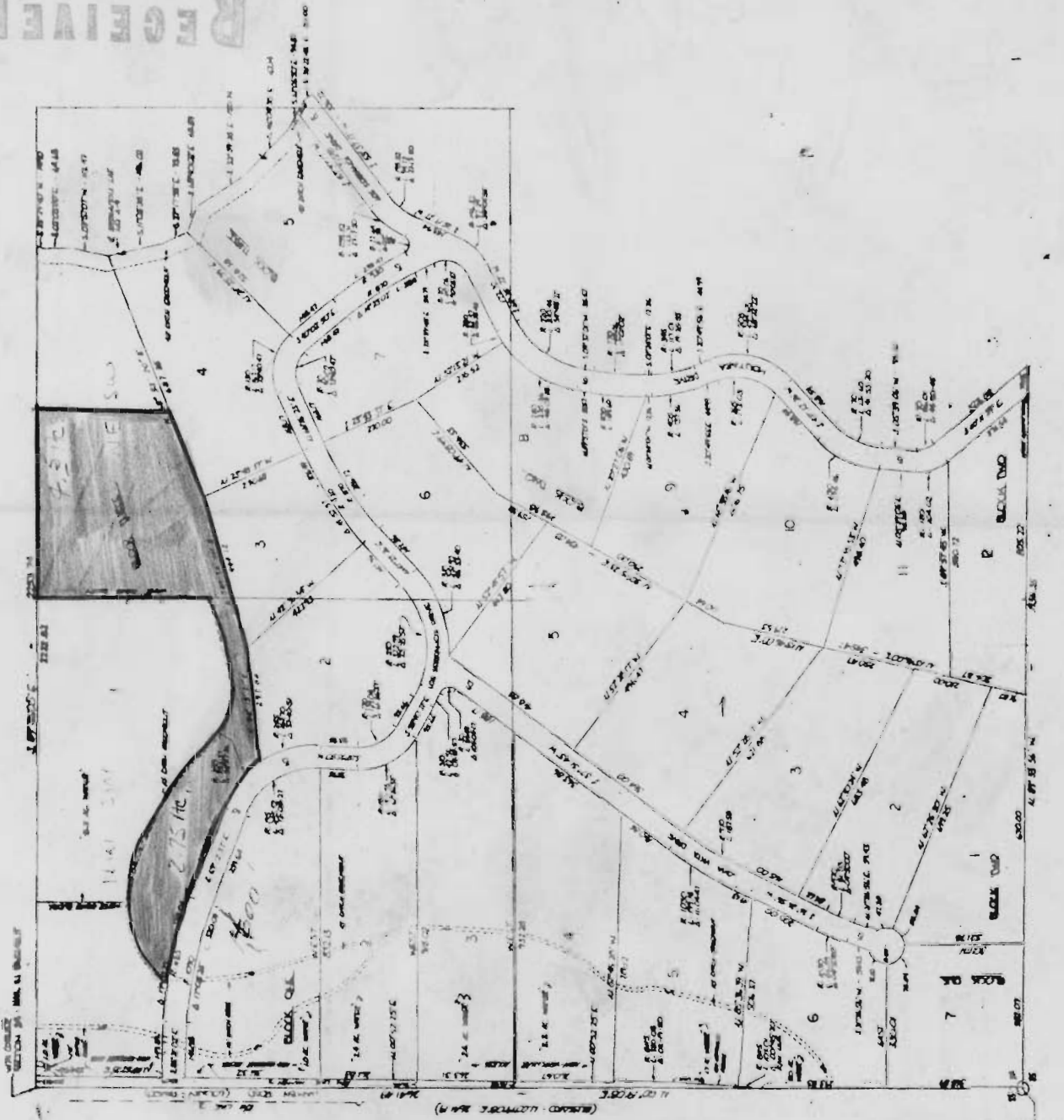


LOS SERRANOS

LOTTED IN SECTION 24, T.17S, R.12E, W.4M., DEWAIN COUNTY, OREGON

RECEIVED
SEP 15 1972
STATE ENGINEER
SALEM, OREGON



SCALE 1" = 200'
JULY 17, 1972
SOLID, OREGON



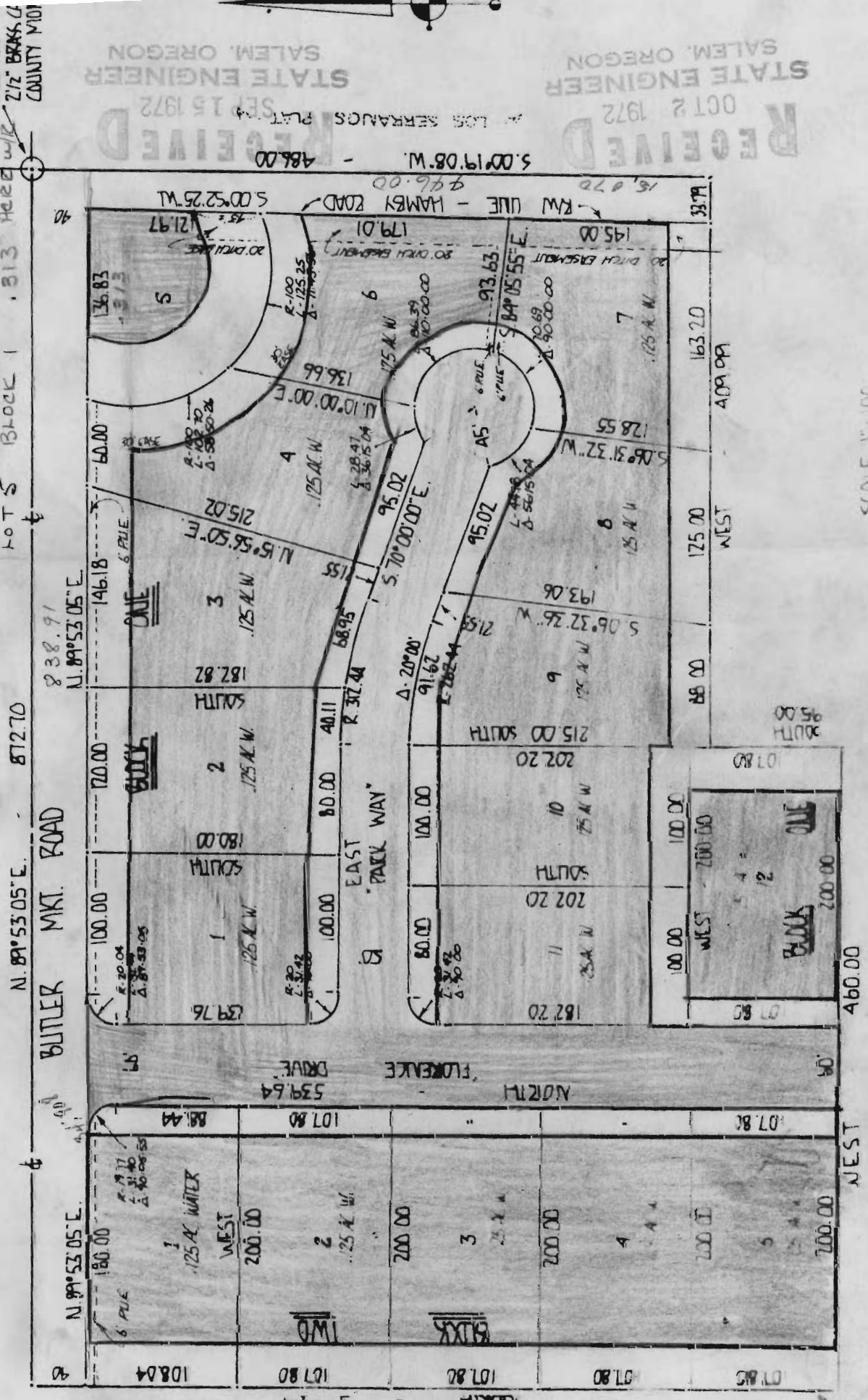
LOCATED IN

WATER RIGHTS 9.563 AC.
TRANS. OFF 7.25 "
w/r ON PLAT 2.313 "

E. 1/4 COR.
SEC. 23
2 1/2' BRACK.
COUNTY M/D

WASU VILLA

PART OF NE SE 23-17-12



RECEIVED
 STATE ENGINEER
 SALEM, OREGON
 OCT 2 1972
 LOS SERRANOS PLAT
 SET 15 1972
 STATE ENGINEER
 SALEM, OREGON

SCALE 1" = 100'
 MAY 26, 1972
 SALEM, OREGON

5.00' 19.08" W. - 486.00

N. 89° 53' 05" E. 872.70

BUTLER MKT. ROAD

EAST PARK WAY

FLORENCE DRIVE

NORTH

NORTH

WEST

WEST 175.00
 WEST 163.20
 WEST 409.99

SOUTH 95.00

WEST 200.00
 WEST 200.00
 WEST 200.00

WEST 460.00

639.24

5445