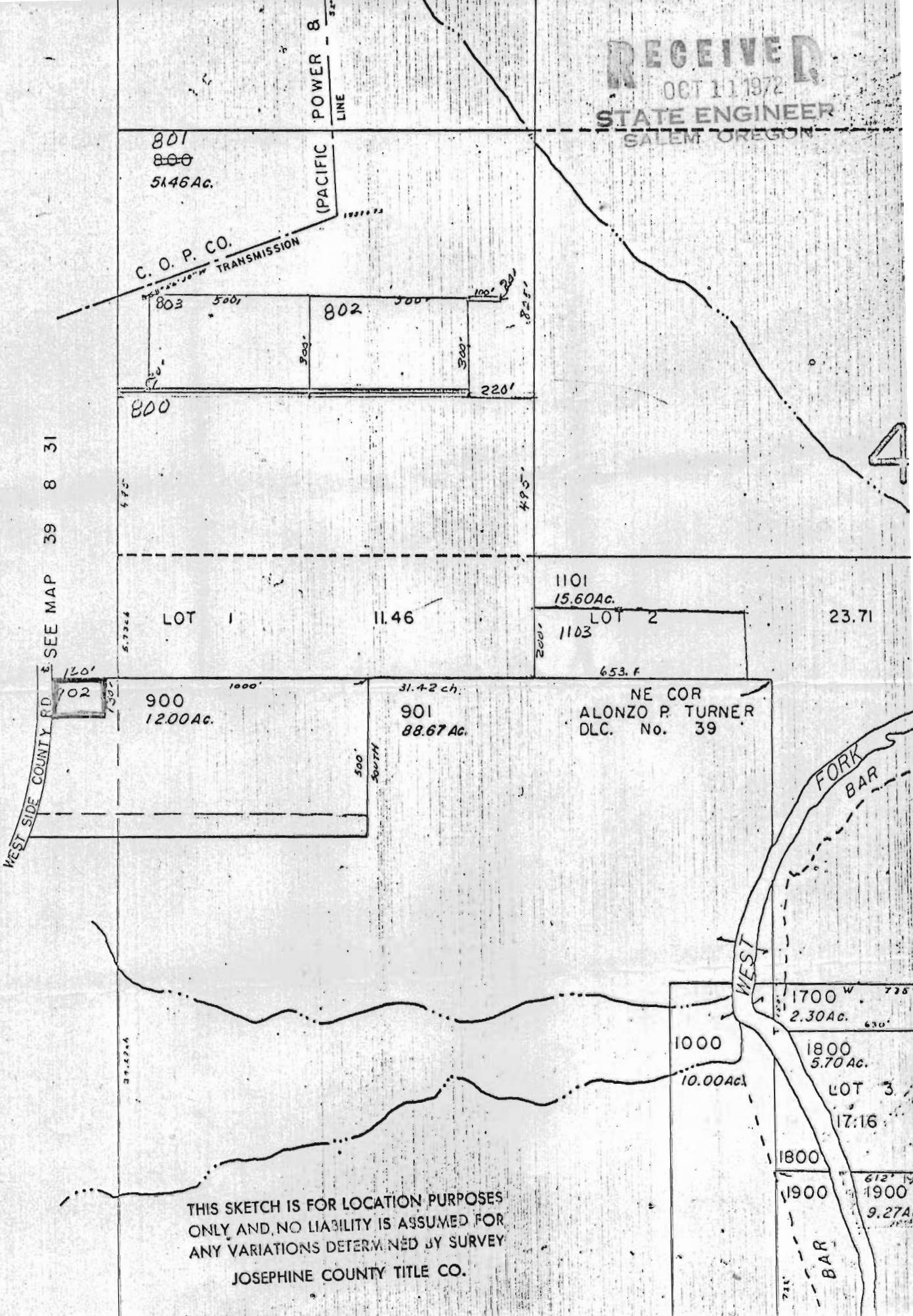


RECEIVED
OCT 11 1972
STATE ENGINEER
SALEM OREGON



801
~~800~~
51.46 Ac.

C. O. P. CO.
TRANSMISSION

POWER &
LINE
(PACIFIC)

803 500' 802 500' 100' 20' 300' 220'

800

WEST SIDE COUNTY RD & SEE MAP 39 8 31

5.724

LOT 1

11.46

1101
15.60 Ac.

LOT 2

23.71

1103

653. F

120'

702

900
12.00 Ac.

31.42 ch.
901
88.67 Ac.

NE COR
ALONZO P. TURNER
DLC. No. 39

500'
SOUTH

FORK
BAR

WEST

1700 W 775'
2.30 Ac. 630'

1000
10.00 Ac.

1800
5.70 Ac.

LOT 3
17.16

1800

1900

612' N
1900
9.27 Ac.

BAR

THIS SKETCH IS FOR LOCATION PURPOSES
ONLY AND NO LIABILITY IS ASSUMED FOR
ANY VARIATIONS DETERMINED BY SURVEY
JOSEPHINE COUNTY TITLE CO.

RECEIVED
OCT 11 1972
STATE ENGINEER
SALEM, OREGON

RECEIVED
SEP 18 1972
STATE ENGINEER
SALEM OREGON

Center
Sec. 31

East
1/4 corner
Sec. 31

1005
15.58 A

Lot 1

To

N. W. Cor
DLC No. 39
A.P. Turner
1102

Detour Road

To

T. 39 S. 8 W. W.N.

Scale 1" = 400'