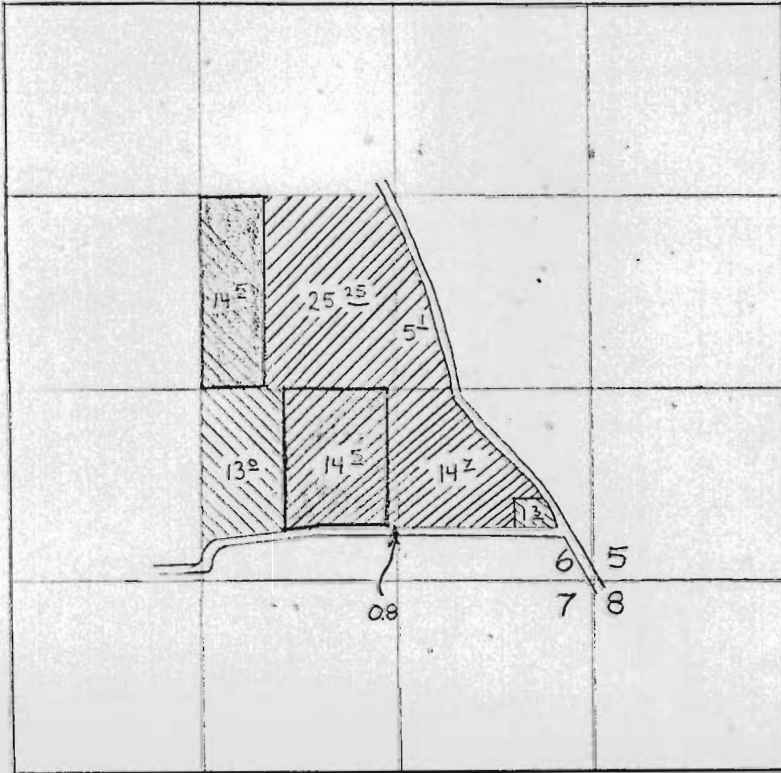


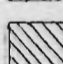


RECEIVED  
FEB 21 1973  
STATE ENGINEER  
SALEM, OREGON

T. G. S. R. I. E. W. M.



-  LANDS TO BE TRANSFERRED
-  PERMIT # 23008
-  PERMIT # 32150

APPLICATION MAP FOR  
CHANGE IN PLACE OF USE  
SCALE 4 INCHES = 1 MILE

drawn by *Michael Ricks*  
Approved by  
*George G. Thet*