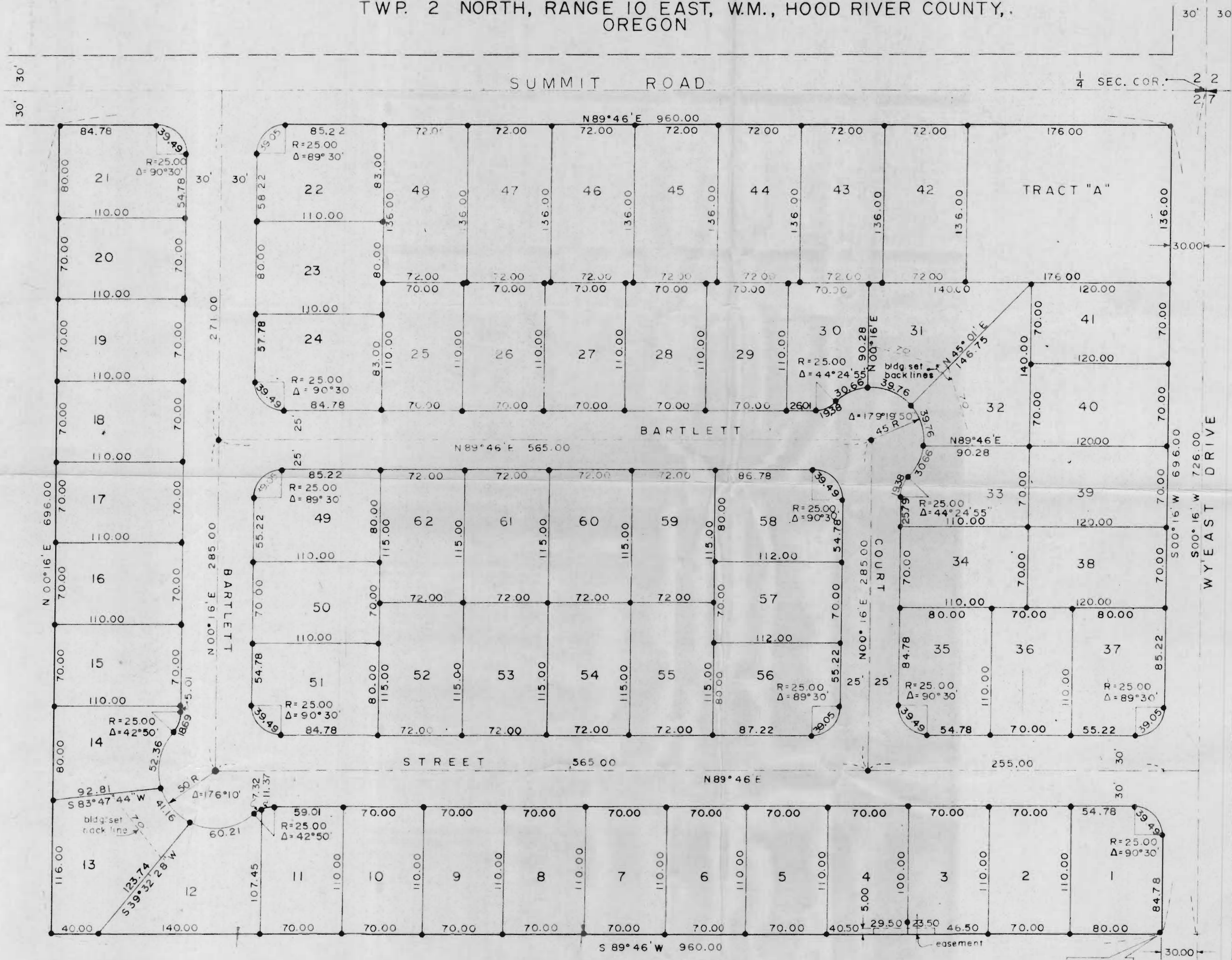


PLAT OF ORCHARD VIEW

SITUATED IN THE NW 1/4 SECTION 27,
TWP. 2 NORTH, RANGE 10 EAST, W.M., HOOD RIVER COUNTY,
OREGON



ALL BEARINGS
BASED ON SOLAR
OBSERVATION

RECEIVED
MAR 22 1973
STATE ENGINEER
SALEM OREGON

INITIAL POINT

CENTER SECTION 27