

SEC 24

TWP 16

RANGE 11



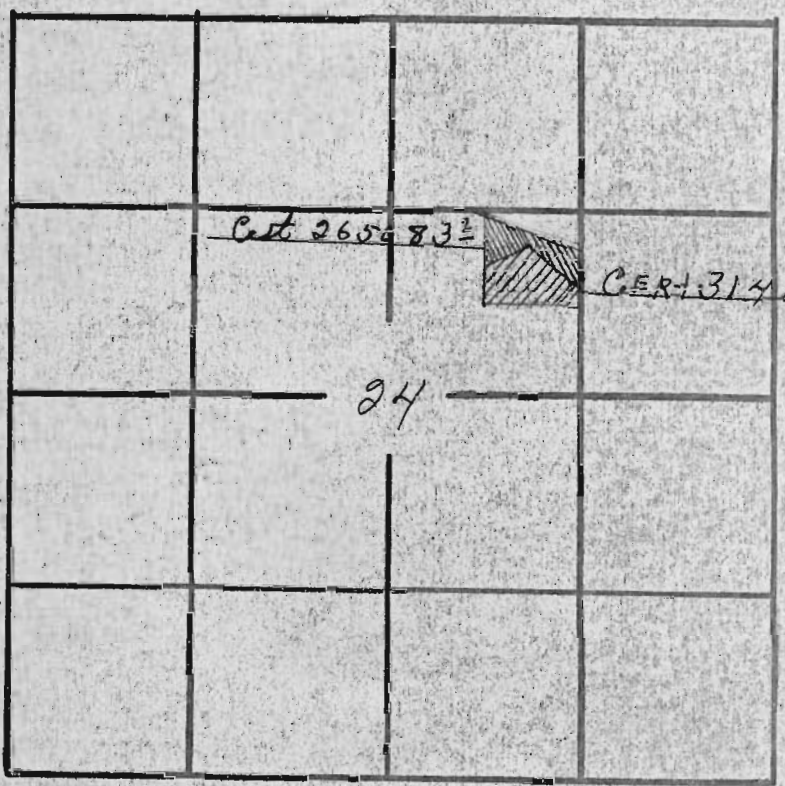
PRIMARY RIGHT
Priority dates from
Sept. 1900
Cert. # 26508
3.2 Acres

PRIMARY RIGHT
Priority dates from
August 5, 1900
Cert. # 31410
6.0 Acres

SUPPLEMENTAL RIGHT
Priority dates from
April 7, 1911
Permit # 624
Cert. # 26051
34.9 Acres

SUPPLEMENTAL RIGHT
Priority dates from October 29, 1913
Permit # 19628
Cert. # 26050
34.9 Acres

PRIMARY RIGHT
Priority dates from
1905
Cert. # 31412
34.9 Acres



TRANSFERED FROM: SW 1/4 NE 1/4 3/4 ^{CERT 26508} SEC 24 TWP 16 R 11.
SW 1/4 NE 1/4 60 CERT # 31410

TRANSFERED TO: NW 1/4 SW 1/4 3/4 ^{CERT 26508} SEC 24 TWP 16 R 11
CERT # 31410 1/4
SE 1/4 NW 1/4 SEC 24 TWP 16 R 11 1/4 ^{CERT} 31410

NOTES: SEE MAP #1

RECEIVED

SEP 9 1974
STATE ENGINEER
SALEM, OREGON

PARK, ED
4.3 acres

RECEIVED
JAN 4 1973

T-2929

STATE ENGINEER

SEC

24 SALEM, OREGON TWP

16

RANGE 11

PRIMARY RIGHT
Priority dates from
August 5, 1900
Cert. # 31410
4.3

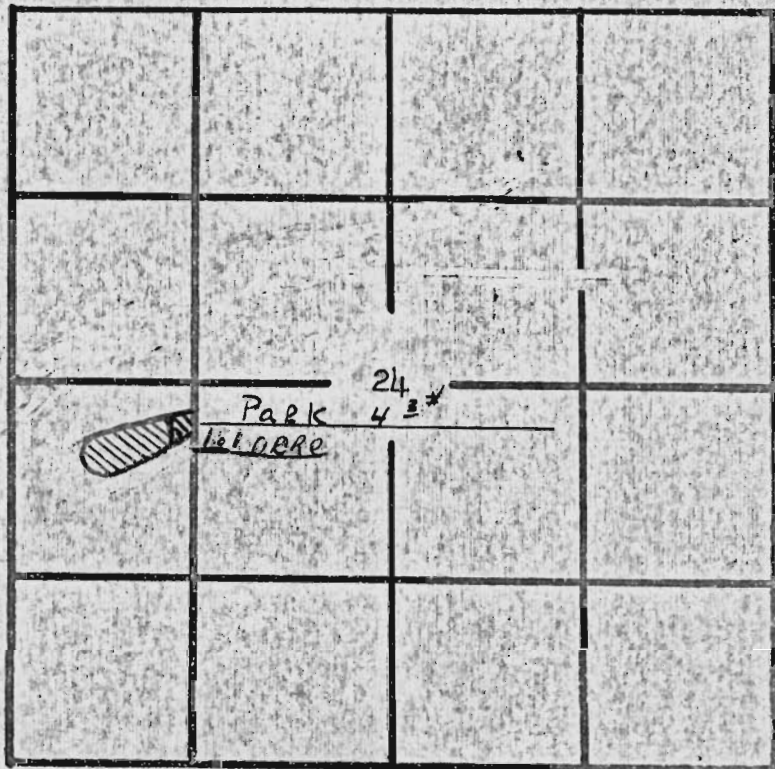
PRIMARY RIGHT
Priority dates from
September, 1900
Cert. # 26508
4.3

PRIMARY RIGHT
Priority dates from
1905
Cert. # 31412
4.3

SUPPLEMENTAL RIGHT
Priority dates from
April 7, 1911
Permit # 624
Cert. # 26051
4.3

SUPPLEMENTAL RIGHT
Priority dates from
October 29, 1913
Permit # 19628
Cert. # 26050
4.3

N
↓
S



TRANSFERRED FROM: SW $\frac{1}{4}$ OF NE $\frac{1}{4}$ OF SEC 24 TWP 16 RANGE 11

TRANSFERRED TO: NW $\frac{1}{4}$ OF SW $\frac{1}{4}$ OF SEC 24 TWP 16 RANGE 11

NOTES: Pumping right only

RECEIVED

SEP 9 1974

STATE ENGINEER
SALEM, OREGON

CECIL STANDIFORD
4.9 acres

RECEIVED
JAN 4 1973
STATE ENGINEER
SALEM OREGON

T-2929

SEC 24

TWP 16

RANGE 11

PRIMARY RIGHT
Priority dates from
August 5, 1900
Cert. # 31410
4.9 *6.0*

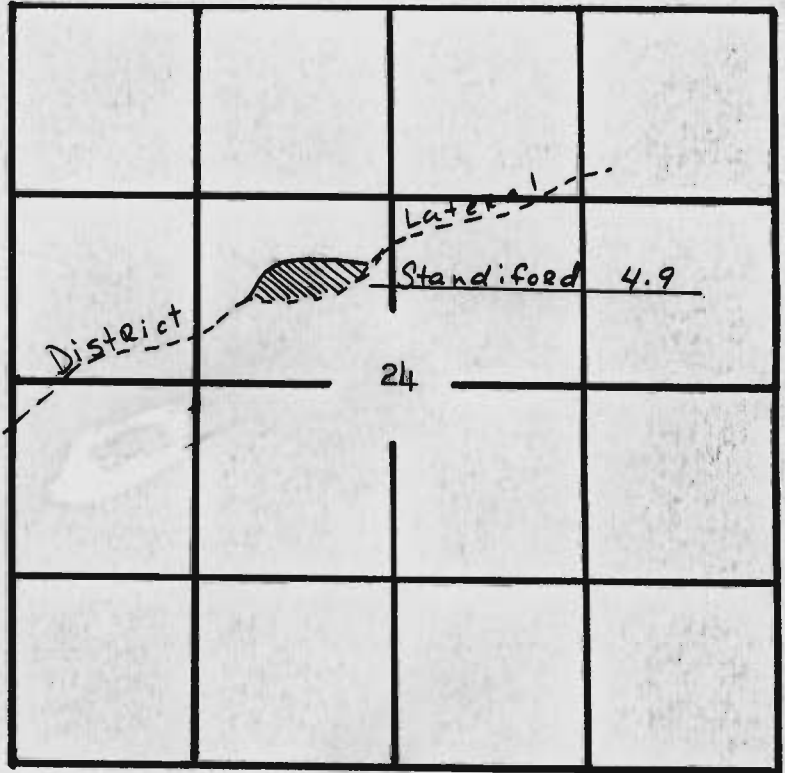
PRIMARY RIGHT
Priority dates from
September, 1900
Cert. # 26508
4.9 *3.2*

PRIMARY RIGHT
Priority dates from
1905
Cert. # 31412
4.9 *3.9*

SUPPLEMENTAL RIGHT
Priority dates from
April 7, 1911
Permit # 624
Cert. # 26051
4.9 *39.9*

SUPPLEMENTAL RIGHT
Priority dates from
October 29, 1913
Permit # 10628
Cert. # 26050
4.9 *39.9*

N
↓
S



TRANSFERRED FROM: SW¹/₄ OF NE¹/₄ OF SEC 24 TWP 16 RANGE 11

TRANSFERRED TO: SE¹/₄ OF NW¹/₄ OF SEC 24 TWP 16 RANGE 11

NOTES: Pumping right only

RECEIVED
SEP 9 1974
STATE ENGINEER
SALEM, OREGON