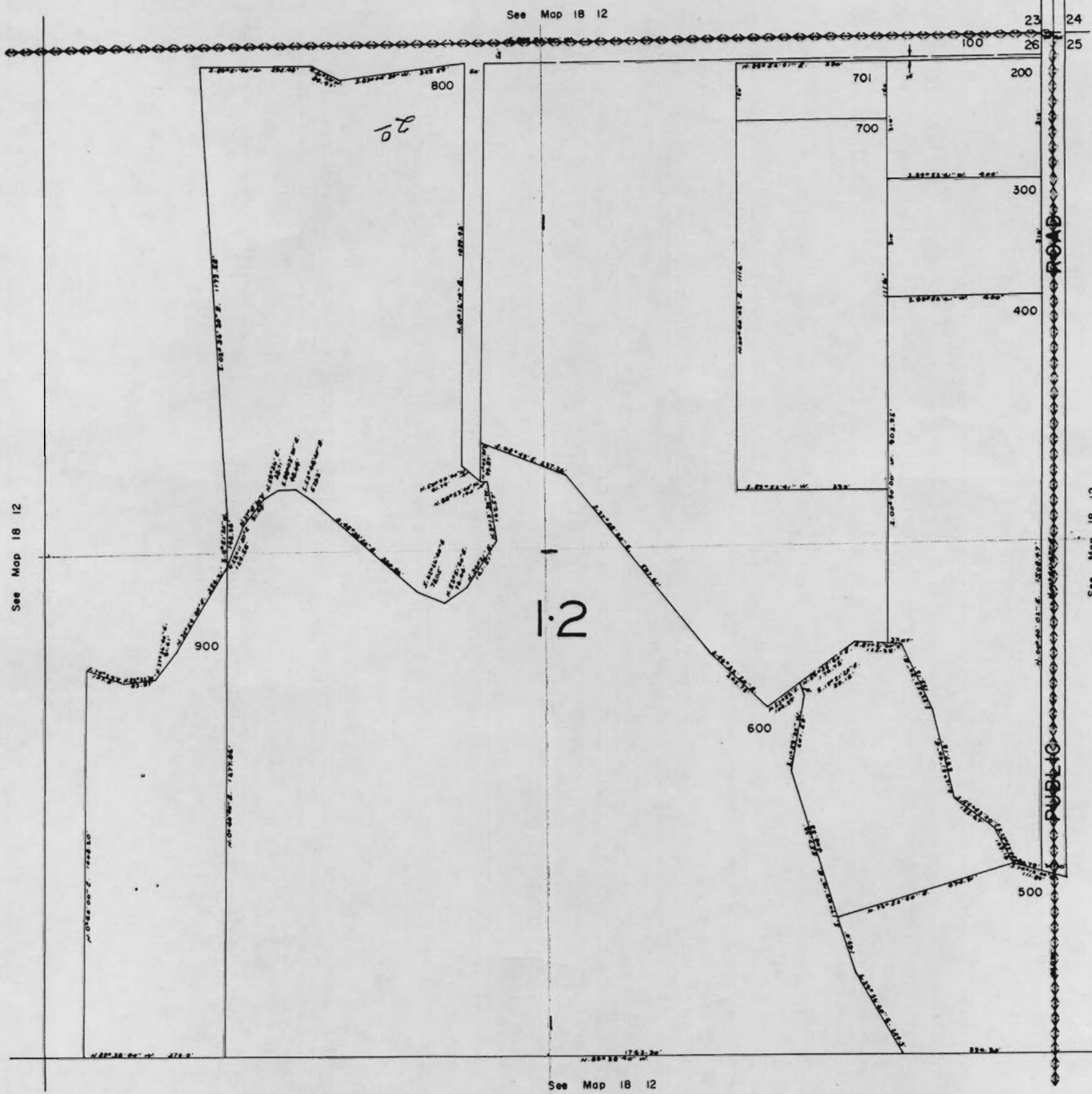


NE 1/4 SEC. 26 T18S. R.12E.W.M.
DESCHUTES COUNTY

18 12 26A

1" = 200'
1" = 400'



2 ac. water right to be transferred to that part of the property
 colored red lying in the ~~NE 1/4~~ Sec. 26 18 12.
 Ralph Boese to William J. Grace

18 12 26A

~~NE 1/4~~
N.W. 1/4 of NE 1/4

RECEIVED
 FEB 26 1974
 STATE ENGINEER
 SALEM, OREGON

(4)

Ralph Boese to Joe Weathers 0.5 acre water right.
to be transferred to plot # 140 Blk. # PP located in
Deschutes River Woods, colored red.

NW1/4 SEC. 26 T.18S. R.11E.W.M.
DESCHUTES COUNTY

18 11 26B

See Map 18 11 23C



See Map 18 11 27A

See Map 18 11 26A

BLK. XXX

See Map 18 11 26C

RECEIVED
FEB 26 1974
STATE ENGINEER
SALEM, OREGON

18 11 26B

Ralph Boese to Glenn Cooper 0.5 acre water right.

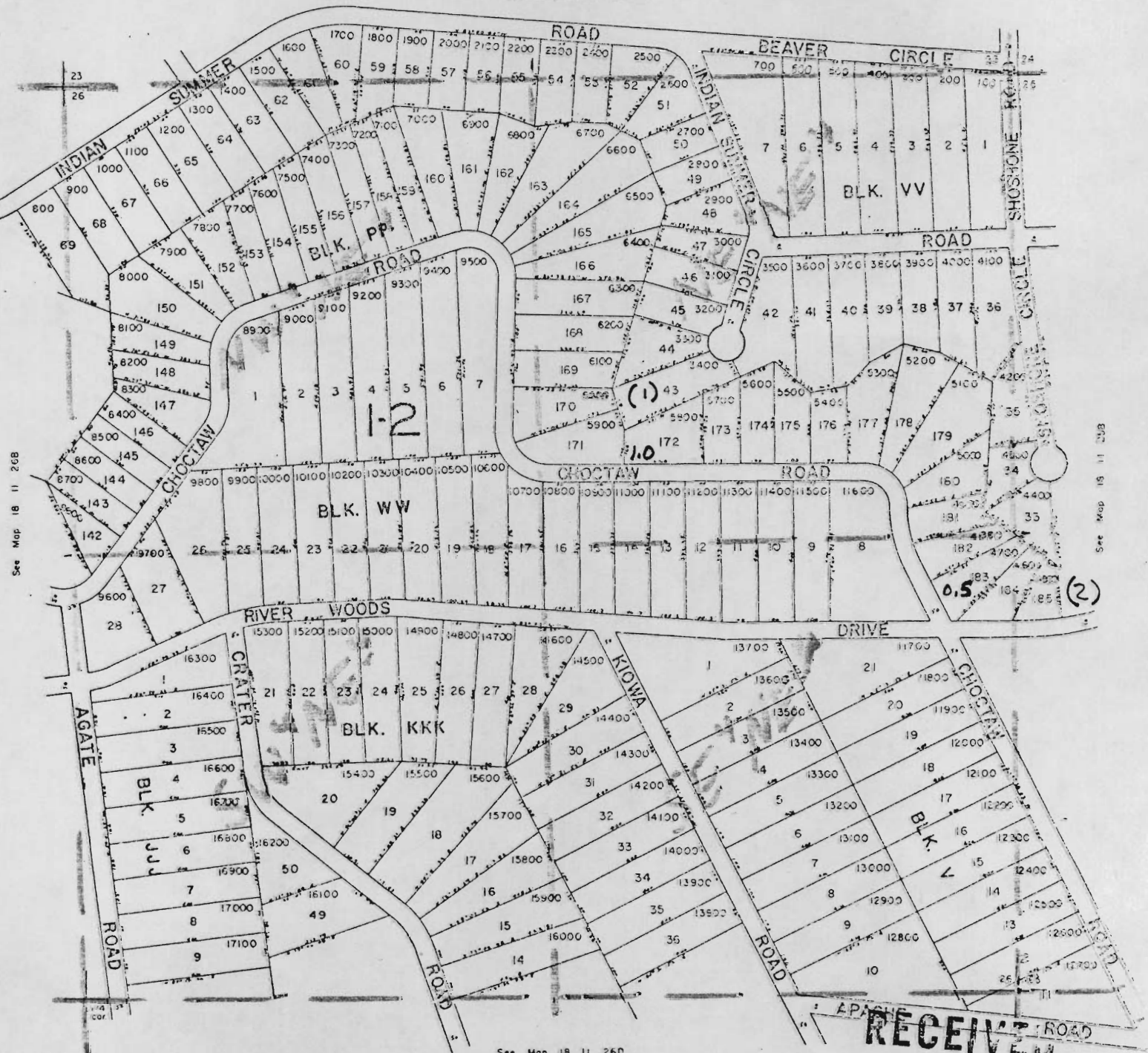
Ralph Boese to Roy Turgeon 1 acre water right

1 ac. water right to be transferred to plot # 172 Blk.# PP
0.5 ac. " " " to " # 183 " # PP
colored red and all in Deschutes River Woods.

NE1/4 SEC. 26 T.18S. R.11E.W.M.
DESCHUTES COUNTY

1"=200'
1"=400'

See Map 18 11 23D



See Map 18 11 26B

See Map 18 11 23B

See Map 18 11 26D

RECEIVED

FEB 26 1974

STATE ENGINEER
SALEM, OREGON

Ralph Boese owner of the property outlined in red.

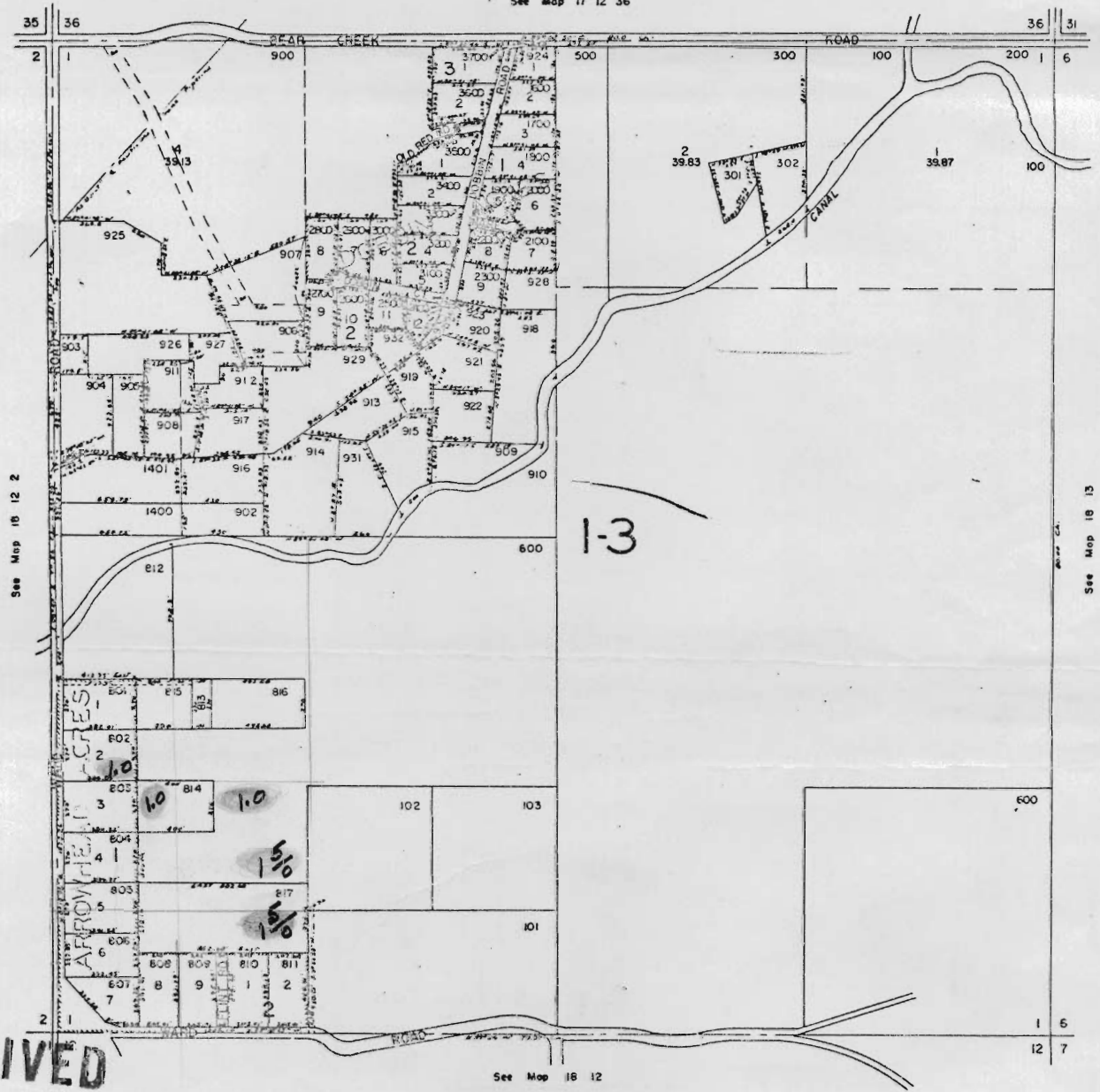
SECTION 1 T.18S. R.12E.W.M.
DESCHUTES COUNTY

dead numbers 400
1000
1100
1200
1300
1500
901

18 12 1

1"=400'
1"=800'

See Map 17 12 36



See Map 18 12 2

See Map 18 13

See Map 18 12

RECEIVED

FEB 26 1974

STATE ENGINEER
SALEM, OREGON

6 Ac. water right to be transferred off the above property designated in red as follows -

- 1 1/4 ac. from NE of SE 1/4 SW 1/4 Sec. 1 T.18S. R.12 E.W.M.
- 1 1/2 ac. " SE of NE 1/4 SW 1/4 " " "
- 1 ac. " N 1/2 of NE 1/4 SW 1/4 " " "
- 1 ac. " NE of NW 1/4 SW 1/4 " " "
- 1 ac. " S 1/2 of SW 1/4 NW 1/4 " " "

16 12 1