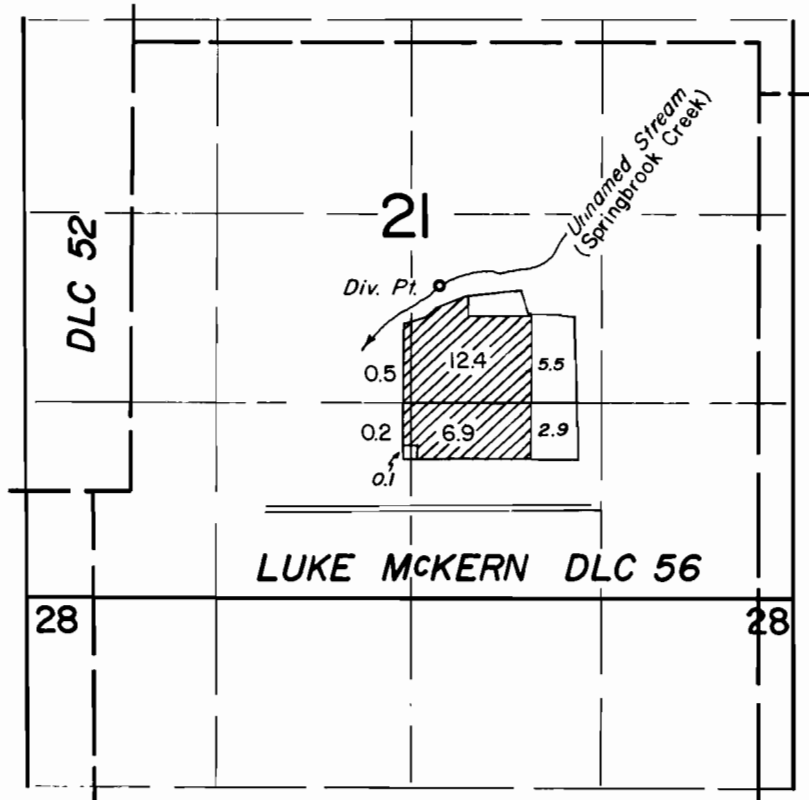


T. 3 S., R. 2 W., W.M.



DIV. PT. LOC.: 2140' N. & 180' E. From S. 1/4 Cor. Sec. 21

**FINAL PROOF SURVEY  
UNDER**

TRANSFER NO. 3069

IN NAME OF  
**CRAIG EAGLESON**

Surveyed MAY 3, 1978, by L. NUNN