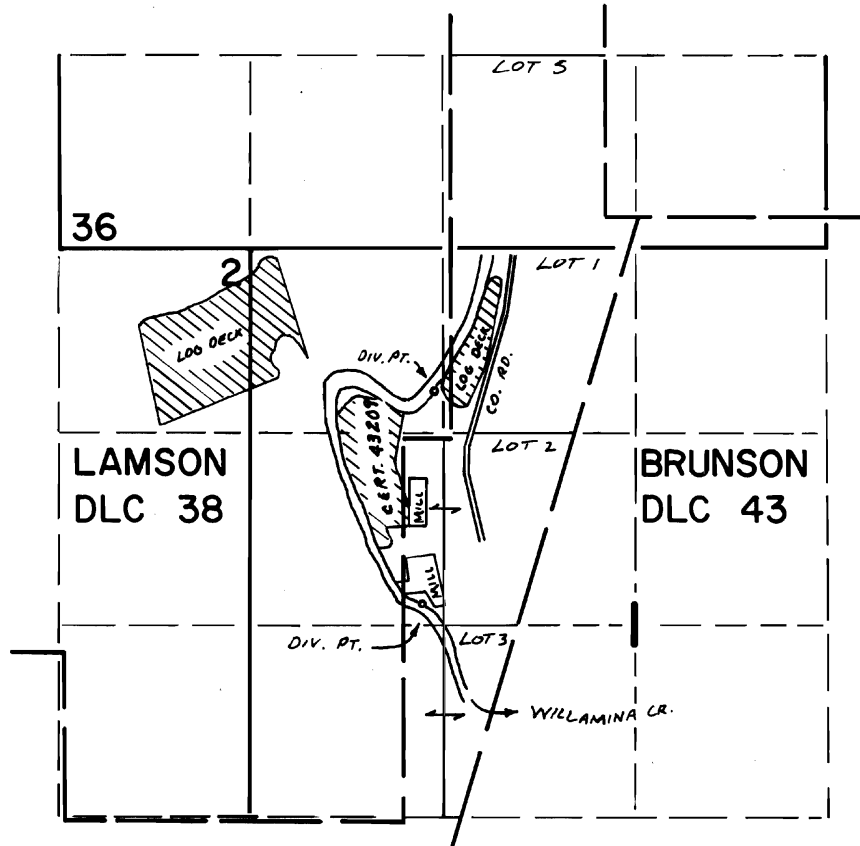


T.6S. R.7W. W.M.



N. DIV. PT. LOC. 990'S & 1250' E FROM THE NW COR SEC 1
S. DIV. PT. LOC. 2450'S & 1190' E FROM THE NW COR SEC 1

FINAL PROOF SURVEY UNDER

TRANSFER No. 3147
Application No. Permit No.
IN NAME OF

WILLAMINA LUMBER CO.

Surveyed OCT. 13. 1976. by L. H. NUNN.....