

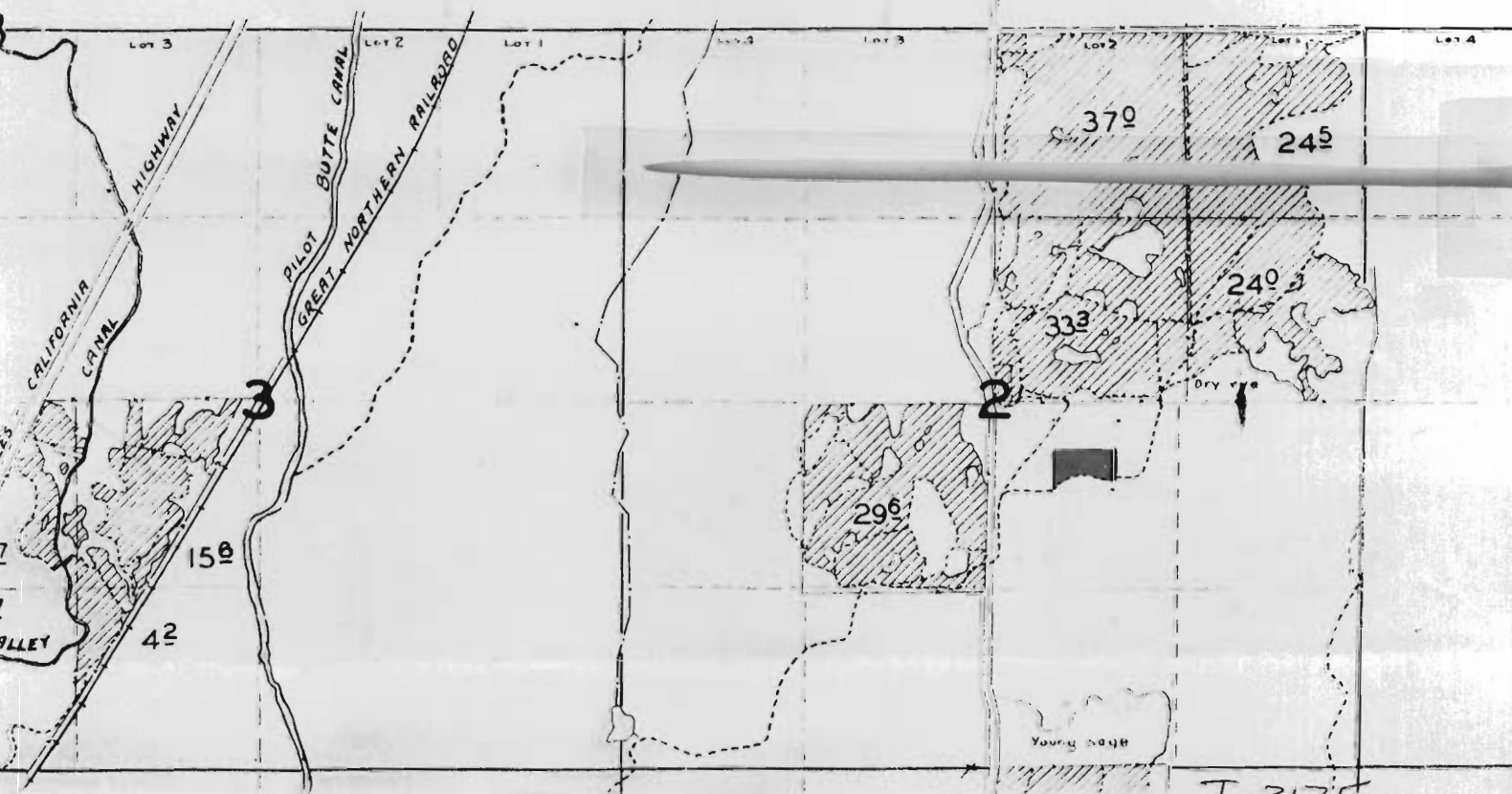
RANGE 12 EAST, W.M.

RECEIVED

MAR 7 1975

STATE ENGINEER
SALEM, OREGON

Transfer to 124 acres





■ = Transfer from
 1.72 acres
 4-23-76
 Corrected Maps
 Transfer No. T-3175
 ■ Transfer OFF
 1.72 ACRES

RECEIVED
 MAR 7 1975
 STATE ENGINEER
 SALEM, OREGON

NW 1/4 SEC. 21 T. 15 S. R. 13 E. W. M.

Acres
1300
1400
1401
4700

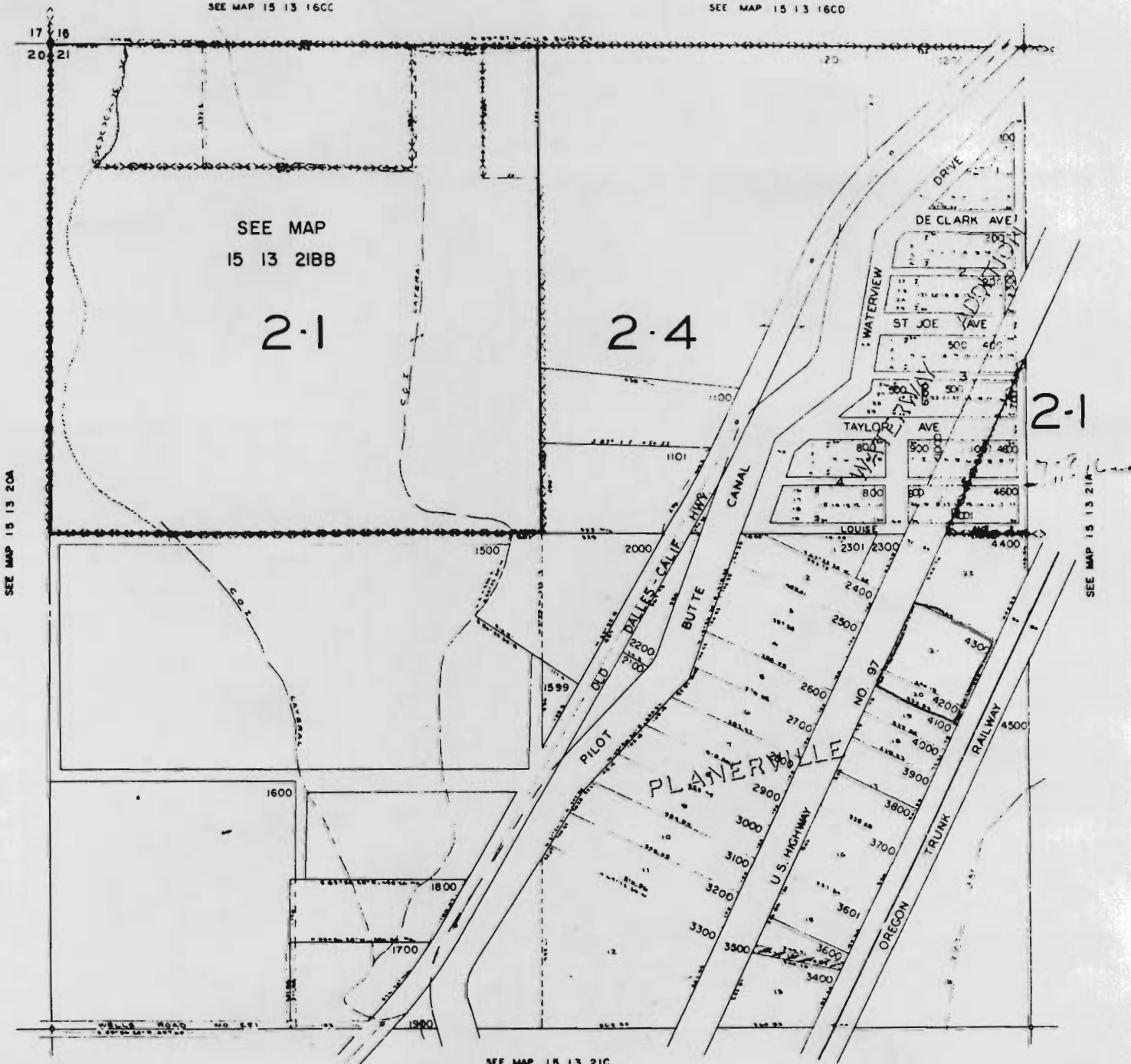
15 13 21B

DESCHUTES COUNTY

SCALE: 1" = 200'

SEE MAP 15 13 16CC

SEE MAP 15 13 16CD



SEE MAP
15 13 21BB

2-1

2-4

2-1

SEE MAP 15 13 20A

SEE MAP 15 13 21A

SEE MAP 15 13 21C

15 13 21B